

BLEASBY NEWS



Spring Celebrations

JUNE 2016



We danced in the sun and the rain!



Then we unwound the ribbons!

Check out
Vivienne's
Village Hall
window box
displays!





Barbara King and Christine Andrews judge the cakes at the May Day celebrations



Two of the Winning Cakes!

WELCOME TO JUNE'S BLEASBY NEWS

A theme running through this month's edition celebrates village life. (See articles on Hazelford, Bleasby School, Lunch Club and the Vicar's letter for some examples.) We could be cynical and suggest that "well, the sun comes out and people get together". BUT on two red letter days, the sun didn't come out yet still people gathered in significant numbers. The weather was distinctly unkind on St George's Day when we celebrated the Queen's 90th birthday on a decorated Glebe Field and yet the tug-o'-war competitions and presentation of birthday medals to the children went ahead in front of a sizeable audience and the Waggon was busy providing much needed sustenance of various kinds. There was almost a repeat performance on Bank Holiday Monday when crowds gathered in spite of the forecast rain. We were rewarded with the first of what we hope will be many displays of maypole dancing. This was new territory for the organisers and participants and they rose to the occasion, the hours of practising paying off. The Bake Off was also a success, showing plenty of talent among adults and children alike and providing a boost to the Aircrew Memorial fund. Our thanks go to the Parish Council for organising these occasions for all to enjoy and to Liz, Ian and Matt at the Waggon for their contribution. There are plenty of opportunities to be engaged in village life and to enjoy each other's company through the various organisations which thrive in our village. But there are but a few which attract a wide range of people, young and old alike, with no particular allegiance to any of these organisations, so these two events were particularly welcome. The school will be holding its annual fair on Saturday, June 18th, providing another opportunity to celebrate together and support our youngsters. There is also much that goes on behind the scenes to ensure that neighbourliness and friendships flourish and that most of us feel a sense of belonging. As a community we are not perfect, however. There are people who don't find their neighbours friendly and doubtless some who feel isolated: inconsiderate parking for school causes serious inconvenience to quite a few households: we still feel the loss of the shop and post office. But there is much to be thankful for, not least a beautiful rural setting, an active Parish Council and a reinvigorated pub at the centre of village celebrations.

We always look forward to hearing from residents – please send your articles, views, ideas, poems etc for the summer edition of Bleasby News to:- Rachael Andrew, Sutton House, pran@suttonhs.fsworld.co.uk or Barbara Cast, Little Dower House, barbaracast@btinternet.com by 11th July.

Your Editors, Barbara and Rachael

ANNUAL MEETING OF THE PARISH COUNCIL

At the annual meeting of Bleasby Parish Council Peter Cast was re-elected as Chair and Charlotte Gent as Vice-Chair.

LAKE DISTRICT HOLIDAY COTTAGE

Borrowdale Road, Keswick

3 Bedrooms | Sleeps 6

TO LET

Fully refurbished holiday cottage with gas central heating,
open fire place and private parking

Views overlooking the fells, front and rear gardens,
superb location

For further details please ring

01636 830209 | 07812 101303

**A. Rickett & Son,
Bleasby
Builder & Contractor
Tel: 01636 830468**

BLEASBY PARISH COUNCIL NEWS

Hopefully, after our recent events, meetings and communications, villagers young and old, recently arrived or long established, will be feeling even more welcome, at home, informed and in touch, as well as experiencing a sense of “belonging” to a very special village community.

The Parish Council sees its role as ‘being a voice and a force’ for the community by which it was elected. It hopes to help formulate a planned and positive future that is representative of the wishes and aspiration of its parishioners. The ‘voices of our community’ can be expressed in many ways, be it through conversation at the school gate, the bar at the Waggon, St Mary’s Church, within our range of clubs and organisations or by attendance at your Parish Council’s meetings.

A major platform for the ‘local voice’ was provided by the recent Annual Parish Meeting at which residents could express views, raise queries and also hear official reports from almost the entire spectrum of parish organisations. This year a wider range of representatives were invited to speak and their contributions proved to be most welcome and informative. All matters relevant to the Council’s remit and powers arising from these reports have been noted and will form a basis for future improvement and developments. It is really important that residents can connect with an ‘open-line’ to the Council and that this line of contact is always maintained and seen to be effective.

At its monthly meeting (scheduled for the second Monday each month except August) there is always an early agenda item for public contributions which provides a very important vehicle for input of information and views for the Council to consider and, if appropriate, act upon. With the broad agreement of the Council, we have also decided to look at ways of improving the format of our meetings, especially with a view to ensure that the more engaging, recent and relevant ‘village-life’ matters are brought forward in order to encourage much more public participation, interest and involvement. Please come along to these meetings, let your own or your organisation’s voice be heard and experience democracy in progress!

Bleasby News provides much valuable information along with the background and progress of a whole range of parish activities and developments, whilst the Bleasby Parish and Community websites at www.bleasbyparishcouncil.uk and www.bleasbycommunity.uk provide the detail of Parish Council business and updates and ongoing activities within the village. Meanwhile the privately run village email service provides some more immediate and wide-ranging news to complete the picture. But word-of-mouth and written communications still remain important – especially for those residents of the village who lack the necessary computer or other technology to receive electronic information.

Above all else, the emerging Parish Plan will put YOU as a villager, group member – even ambassador (possibly with particular interests, skills, experience or expertise – perhaps even with creative and visionary flair) into a position of influence in helping

shape the future of Bleasby. We will be holding an open meeting for anybody and everybody interested in finding out more about Parish Plans, those representing particular organisations and those who might even be considering joining our fledgling Steering Group. Your involvement, whether as a supporter or as an active member, will be greatly appreciated and valued. Please remember that shared involvement is very acceptable and a more realistic limited input role will be welcomed and accommodated.

Peter Cast on behalf of the Parish Council

FROM THE REVD PHIL

'The whole is greater than the sum of its parts'

Apparently it was Aristotle not my Auntie Mabel that said this and it still holds value through time and across cultures. Things small and vulnerable can collectively have great effect and influence. The principle alone of partnership brings intrinsic benefits quite apart from any end result. We are made to be in relationship. For the Christian or many a 'spiritual' person *'my soul is restless 'till it finds its rest in thee'* (St Augustine) is part of that basic human requirement for relationship. A strength of being part of a small community like Bleasby or a rural church is that we can look out for each other. Loneliness will be found very close to where you and I live. Can we do something.....something more than we are doing? Do we cooperate together and find a greater wholeness than the part we contribute? Or are we islands in a commuter suburbia?

*No man is an island,
Entire of itself,
Every man is a piece of the continent,
A part of the main.
If a clod be washed away by the sea,
Europe is the less.
As well as if a promontory were.
As well as if a manor of thy friend's
Or of thine own were:
Any man's death diminishes me,
Because I am involved in mankind,
And therefore never send to know for whom the bell tolls;
It tolls for thee.*

John Donne

The Revd Phil

(PS no deliberate intention to sound like a political broadcast on behalf of either referendum campaign!)

THE QUEEN'S 90th BIRTHDAY AND "LET'S ALL PULL TOGETHER" EVENT

As a means of bringing the whole parish together in a joyous and memorable way to celebrate Queen Elizabeth's 90th Birthday and St George's Day and to bring a focus upon our future and that of coming generations, the Parish Council decided that an all-comers tug-o'-war event would bring the fun and cohesion needed to make this day both special and formative.

The weather was cool and overcast, but at least dry, for a whole series of adult, young people and children's pulls orchestrated by our able and entertaining referee, Gray, working mainly under international rules drawn up when it was an Olympic sport early in the 20th century! Numbers in teams proved extendable – and in some pulls there was barely enough room for team members, even on a one hundred foot rope which could only just fit diagonally across the Glebe Field! The men-against-men pulls were highly competitive with barely an inch given by either side for long periods of time and the women proved to be almost as determined. The children's pulls were gender divided with indeterminate numbers of enthusiasts being added to the team members at both ends, according to which way the pull was going!

Meanwhile attention to the *raison d'être* of the event was brought into focus by the distribution of commemorative medallions to the children of the village and the writing of messages for the future to be included in a lead time capsule created by Michael Coombs and ceremoniously buried, along with 'treasures', by Bleasby children beneath a walnut tree - to mark and remember the longest reigning monarch in all our history - and to cement Bleasby pride and identity.

Peter Cast, on behalf of the Parish Council



HAVE YOUR CHILDREN RECEIVED THEIR QUEEN'S 90TH BIRTHDAY MEDALS

If not please contact Peter Cast on 830284 or peterdcast@btinternet.com

MAYPOLE DANCING

We celebrated May Day with maypole dancing and a bake-off competition on the Glebe Field.

Despite the weather being a little unkind to us, the eighteen maypole dancers put on a wonderful performance – the result of one month of regular practices (much to the surprise of passing traffic). I was so proud of what the team had achieved in such a short amount of time - one of the dancers was just 4 years old. As I said on the day it couldn't have been more British - maypole dancing in a pretty dress with flowers in your hair in the pouring rain! The dances were enhanced by the addition of some pre-school children – I spy future additions to the maypole team in the making ☺ Sadly we had to cancel the adult dances we had planned due to the rain.

The amazing cake creations were judged by Christine Andrews and Barbara King of the WI – thank you ladies. They said the standard of Victoria sandwich was extremely high – fortunately no 'soggy bottoms' in sight! Your cake donations raised £215 for the WWII Aircrew Memorial Fund – Ken Ogilvie has expressed his thanks to everyone involved.

Thank you to everyone who contributed in some way to make this event a success, and to all those who turned up to support it.

I plan to start maypole dancing practices again in June so if anyone would like to join in the fun please contact me – everyone is welcome.

Charlotte Gent
On behalf of Bleasby Parish Council
charlotte.gent@btinternet.com
Tel – 01636 830105 / 07947 571280



SAFER NEIGHBOURHOOD GROUP

How to do your best to baffle the burglars!

A few simple rules

1. Do not advertise that you are out – make the house look occupied from outside
2. Always keep doors and windows closed and locked when out but leave “signs of life” within the house
3. Never leave valuables on show – that invites crime
4. Never leave keys where they can be seen – especially keep them away from doors and windows
5. Take care what information you are giving out on social media – it may reach potential burglars who might then visit while you are on holiday!

.that were shared at May’s Safer Neighbourhood Group meeting of local parish representatives and our PCSO, Keith Crowhurst.

Crime in the Trent villages (from Lowdham to Cromwell and across to Farnsfield) is thankfully low with only 10 burglaries reported in the area since 8th March and only 8 thefts from cars during the same period. Bleasby unfortunately experienced one of each to contribute to these figures.

Importantly, however, the police were most impressed by the experience of one of our residents who had recently installed a doorbell/camera/alert system on his mobile phone which alerted him while away from the house that someone was ringing his doorbell, provided images of hooded individuals and allowed voice contact with them. The potential criminals naturally took flight but left behind useful images which are now on police criminal investigation files! Perhaps we should all invest in such technology.

If you are wondering where our “bobby on the beat” is, the answer is – regularly passing through the village in either a marked or unmarked car looking for suspicious individuals, vehicles or activity, as well as undertaking effective local and coordinated operational activities with specific objectives in mind over the 24 hour period. This is surely the most efficient and effective way we can use police resources in an extensive rural area!

If you wish to become more involved in this Safer Neighbourhood Group or would want to see a Neighbourhood Watch Group re-established please alert the Parish Council directly or through forthcoming Parish Plan questionnaires and meetings. You could even contact either of us!

Derek Whitman and Peter Cast 830284

Going away?

Why not leave your pets with us?

Valley Boarding Kennels & Cattery



Situated between Bleasby and Fiskerton in the heart of the countryside

**** Kennels and catteries with outside individual runs ****

Please visit to see our facilities

Gypsy Lane, Fiskerton | Telephone: 01636 830268

www.valley.talktalk.net

Thinking of Visiting Shropshire?

Richard and Wendy look forward to welcoming you to their 4*

B&B Woodville

Clun Road

Craven Arms

Shropshire SY7 9AA

Situated in unspoilt countryside – excellent for walking and
close to the ancient market town of
Ludlow with its many award winning restaurants

CALL 01588 672521 or 07802 509557 glazebrook1@tiscali.co.uk
www.woodville-bed-and-breakfast.com

CHURCH NEWS

Good Friday It seems a very long time since we set out from Upton for our Good Friday Walk. It was a beautiful spring morning and there was much to be enjoyed as we progressed along the Trent Valley to Hoveringham. Little did we know that this would be followed by a return to wintry weather for almost the whole of April. At one stage of the journey or another sixty four people took part in marking this special day in the Church's year and we gained much from each other's company.

End of Term Service We were pleased to welcome the children from the school to St Mary's for their end of term service. There is scarcely any room for parents these days as the school population has grown but they came any way and seem happy to stand if need be. We were particularly pleased to be able to join the school in wishing Sarah Fowler a happy retirement. Sarah has been a much loved and valued teaching assistant for many years.

Annual Parochial Church Meeting Rev Phil urged the congregation to attend the annual meeting so that they could join us in looking back over a successful year and committing ourselves to a new one, rather than regarding it as a necessarily tedious procedure. So a larger than usual gathering did just that and found it surprisingly interesting. Sally Huddleston resigned from the PCC because of family commitments but will remain an active supporter of church events. All other members and officers were reappointed.

Annual Parish Meeting We were pleased to be invited by the Parish Council to give a summary of our work over the year, including our work in the community with the school and various groups and organisations which make our village such a lively and supportive community.

Funding Programme We are grateful to all those people who support the church financially through regular giving. It is time now for a new programme to replace those covenants that have been lost during the seven years since our last campaign and to widen the funding base further. Please give the appeal your serious attention to enable us to keep the church in good heart for future generations. Accompanying leaflets explain in more detail what needs to be done.

Ascension Day May 5th was the 150th anniversary of Lay Readership. At a time when the population was growing rapidly and many people were migrating to towns and cities, courses were set up to train lay members of the Church of England to support the ordained ministry. Those admitted, firstly men and latterly also women, are licensed to take services, including funerals, and to preach. They are unpaid and provide valuable service to those communities where they are active. The West Trent Group is fortunate to be supported by the ministry of Elizabeth Blakey, Angela Green, Jane Johnson and Nigel Ladbury. Our readers led the celebratory benefice service at St James, Halloughton on Ascension Day. We offer them our thanks for all the work they do for parish life in our communities.

Whit Sunday The benefice service on Whit Sunday or Pentecost was held at Bleasby on May 15th. The Trent Churches Choir gave a much needed boost to the hymn singing, which made for a joyful occasion. The third Sunday of each month is set aside for a joint act of worship for all the churches in the group.



Rachael Andrew and Diana Temperley, Churchwardens

BLEASBY: QUINTESSENTIAL ENGLISH VILLAGE COMMUNITY OR DORMITORY VILLAGE?

There are many reasons why we choose to live in Bleasby rather than other places. Perhaps it is the mix of school, pub, church, village hall, range of societies and village activities, the joint efforts of the community and the friendship of our neighbours in the various activities that take place. Today, as I write, there has been maypole dancing practice on the Glebe field and the Wednesday Group meeting to “knit and natter” in the village hall. The pub exudes a gentle chatter over the Glebe Field as parishioners enjoy early evening sunshine. Our community life makes living in Bleasby good. But our environment is also important. As you drive or walk past the Glebe Field, it is easy to imagine the same scene over several centuries, with the church, the pub, and the field being the constant hub of the village.

The church is an interesting topic. Most people feel something about the church, whether they attend services there, turn to it in times of celebration like weddings or Christmas, or when life is more difficult. Others appreciate the company of the visiting team. Many turn to the church to arrange a funeral. The churchyard is a peaceful place of rest. It also has an important part to play in our village life.

But ...the church needs help.

It costs £25000 a year to keep it weather-proof and maintained as a Grade 2 listed building and to support its work.

If all 311 households in Bleasby gave the church £5 or £10 per month, with gift aid our funding would be easy...but most households don't donate regularly.

We do appreciate that finances can be tight. However, we would like to ask you to consider making a regular planned gift to support the church, promoting its work and maintaining the building and churchyard. It is part of our village culture and heritage and it should be our duty and responsibility to pass it onto the next generation. Please don't let it decline 'on our watch'.

There is an information pack, including a planned giving form, delivered with this edition of Bleasby News. We would be grateful for your support in keeping St Mary's an active, well-maintained and beautiful place at the heart of our community.

Ali Sutherland, PCC member, and David Goss, Church Treasurer

BLEASBY LOCAL HISTORY SOCIETY PROJECT – AIRCREW MEMORIAL STEAM TRAIN JOURNEY – 20th AUGUST 2016

A quick update on the project - Bleasby Parish Council has now approved the indicative design of the new Aircrew Memorial. The next step is for an application to be made to NCC Highways for a Risk Assessment to be carried out for the design and site location which, if approved, should lead to the granting of the necessary licence for the construction of the new memorial on the roadside.

Ticket sales for the steam train trip on 20th August started in April and at the time of writing, we have 36 completed application documents, and a further 19 firm enquiries. The initial target is to fill two Pullman coaches of the special train, which means 84 seats, so we are now well on the way to achieve this. We will then make the decision as to whether or not the third coach for a further 42 passengers will be added, based on the level of interest and enquiries that have been received at the time. If you would like to reserve seats on the train, please complete and submit the application forms, which can either be handed to me, any Bleasby Local History Society Member, or handed in at the Waggon. Whilst at the Waggon, why not treat yourself to a drink or a meal, and place your loose change in the collection box.

The project has attracted the interest of the local media. BBC East Midlands television news visited Bleasby on 9th May to film. The BBC has also created a website article about the Project. The Bramley will also have an article about the Project in the June edition.

Donations have also been made by several villagers who cannot attend the Steam Train trip for various reasons. Further donations, with Gift Aid forms where possible, are most welcome. I must also mention the May Day celebrations with the "Bake Off" as well. Despite the weather, a great afternoon was had by all, and those who enjoyed the teas and cakes generously donated £215 towards the Project. Some very creative and tasty cakes were baked and contributed to the event, which was organised by Bleasby Parish Council. My grateful thanks to the organisers of this event for both arranging the event, and for selecting this project as the beneficiary for any donations.

If you have any queries about the project, please make contact either by email at bleasbybscm2016@btinternet.com, speak to any of the Bleasby Local History Society Committee members, or call me on 01636 830661.

Thank you for all of your support.

Ken Ogilvie



Ken Ogilvie with Quentin Raynor of BBC East Midlands

NJN JOINERY

Phone: Nigel Newcombe
on
01636 525506
or
Mobile: 07837 235427

**ALL TYPES OF JOINERY
AND
MAINTENANCE WORK
UNDERTAKEN**



BLEASBY SCHOOL SPORTS SUCCESS

In April children from Bleasby School took part in the Sam White Shield Hockey Festival which was in honour of Sam White who sadly passed away in 2013, from a brain tumour. Sam led a great life even when he was fighting against glioblastoma multiforme, a grade 4 cancerous brain tumour, and he still managed to achieve great things such as speaking in the Houses of Parliament and speaking at a parliament in Brussels.

Bleasby School paid tribute to him as they were unbeaten in the whole tournament. They drew their first match, a 0-0 stalemate with solid defences on both sides. Bleasby then went on to win their next three games, getting them into the semi-final against Long Bennington - it was a hard match but Bleasby's consistent high work rate ended up in Bleasby eventually coming out on top and progressing into the final. The final was a stiff competition against Kirklington. Bleasby got off to a strong start, scoring in the first 5 minutes. However, soon after Kirklington equalised with a quick counter attack ending up in a goal. Bleasby came fighting back and, with minutes to spare, they managed to slip in a last minute goal to win the game.

The Bleasby School football team is also doing well. They beat Highfields away 5-3, even when they didn't have the home advantage. They are through to the semi-finals of the cup, with the opponents still to be confirmed. However, they suffered a disappointing defeat in the league against Bishop Alexander who just clinched victory in a close match that ended 2-1.

Bleasby have also performed well in cross country running. They came joint first in the winter relays, after a tense last race, trailing from one point behind at the start. Four Bleasby runners achieved the fastest times for their age groups on the day. Out of the four races in the series Bleasby won two of them to come joint first with Abbeygates; Highfields came third, just 6 points behind the two winners. Other schools that took part were Claypole, Barnby Road, John Blow, Coddington and Blidworth Oaks.

Hopefully Bleasby can keep up the achievements as they progress into the semi-finals of the Cup.

Elliot Gillooley-Evans

Elliot submitted this article as part of his service to the community for the Bronze Duke of Edinburgh Award. It is good to have some news from younger members of the community. Look out for further articles from Elliot in following issues.

WELCOME TO BLEASBY

Welcome to Adrian Done who has joined his family at Magnolia House.

It's again been a busy time for BSFA - some of our news: -

We are grateful to Enterprise Rent-A-Car for donating 2 filing cabinets, 2 display cabinets and a projection screen to the School. The trophy cabinet looks great and is filling up nicely. BSFA would like to extend a huge thank you to Tom Vickers and Robin Scurfield for driving to Stapleford to collect the cabinets and delivering them to the School.

On Wednesday 4th May, representatives from BSFA attended the School Council event to hear the ideas that the children have for BSFA funded projects and school improvements. The Council did a marvellous job presenting their ideas and the school and BSFA will be considering these over the coming weeks and will report back.



BSFA are pleased to announce that we have funded £1000 worth of sports kits and £180 for choir shirts and pins. We're sure you will agree that the children look fantastic.



We have some great events lined up over the coming months.

BSFA Camp Out - 11th June at Kelham Hall from 12pm on the Saturday until 11am the following day. Details from Janene.Scurfield@erac.com It's going to be a great event and the children are very much looking forward to it. Fingers crossed we get some sunshine....

Bleasby School Summer Fair is on Saturday 18th June - 1pm - 5pm at Bleasby School, bigger and better than last year. We are holding a fancy dress competition for both children and adults with prizes for the Top 3. Maxey's Farm Shop will be running the BBQ and Deli Counter and Home from Home Kitchen are back by popular demand. Poppets Play Hire is providing lots of inflatable fun and face painting. We have a licensed bar, Bleasby School Dance Troupe, external and school arts and craft stalls, jewellery, ceramics, Dutch biscuits, tuck shop, ice creams, live music and much, much more. The Young Apprentice is back this year for Year 6 children.

Also there are

- Summer Beach Party - evening of Thursday 21st July – at Rolleston Village Hall
- School Bounce-a-thon - 24th June - Bleasby School
- Table Top Sale – Saturday 17th September 10am – 12 - at the School

If you or your families are able to help out at any of the events, please let Nicola Bennett know on 07837 810487 or nicola.bennett@experian.com know - we are always short of helpers.

Thank you

LEISURES, PLEASURES AND PASTIMES BY THE PONDS

An early morning walk around the Jubilee Ponds is an investment in the quality of life and peace of mind that any Bleasby villager can imbibe.

Beneath the 'whirligigged' rippled surface-rings, the low bright sunlight over the waters allows glimpses into the world of the carp as they cruise as hazy blue, green spectres producing the faintest of bow waves and, like some two foot torpedo, unexpectedly explode out of the water in some spawning spectacle.

Ragged robin and red campion stand out strikingly above the subsiding blues of forget-me-not and speedwell whilst the buttercups in crowded clumps add to the colourful flourishes on our meadow and woodland edges.

The geese trumpet their wheezy calls as Canada geese mingle uneasily with greylags. A pair of Egyptian geese look on, apparently bemused by the sight of a pair-bonded, but very much at ease, Canada gander and greylag goose, flagrantly ignoring the mixed-specie rule. The recent loss of our pen (female swan) brings a sad peace and tranquillity to the Ponds as her mate, the previously very aggressive and territorial cob, is no longer actively driving away visiting geese from the Ponds. His possibly life-time partner is no longer a driving force in his watery kingdom and the anticipation of a 'break-out' of cygnets is a loss to us also.

Mallard ducklings, however, scurry from waterside vegetation, keeping close to their mother; whilst a gang of redundant drakes ignore their offspring, each one possibly having at least one of these charming, downy bundles added to their name. A family flock of long-tailed tits scramble through the willow branches appearing deep red eyed in the glancing sunlight, whilst a snowstorm flurry of feathery willow seeds are cast across the reedbed by gusting breezes.

The parched and blanched corduroy-like stems of last year's reeds are full of the chatter of reed-warblers hidden in the dense but greening understory of this year's new growth. A pair of garden warblers chase through the bankside willows and a dapper male reed bunting flies from the cover of the reedbed to perch above them to cackle his strident territorial call. In the distance the arrival of a cuckoo is clearly heard, announcing a warning to all would-be foster parents in the reedbed.

An oystercatcher with plaintive call flies overhead, whilst crows and magpies answer in harsh and guttural response. A wren sings joyfully, whilst a heron in lumbering flight assumes that this is his time to depart his fishing haunt.

The scent of the warming gorse flowers begin to rise: and so does the early buzzard as it finds the first thermals of hot air ascending into blue, cloud strewn skies.

A new spring day has begun and all should be right with the world.

Peter Cast

BLEASBY PLAYGROUP

On Monday 18th April, Bleasby Play Group celebrated their one year Anniversary by throwing a party! Lots of local tots and their families came along to celebrate. Everyone had fun on the bouncy castle, playing with the soft play equipment, decorating cakes, making craft flowers...and much, much more..! Bleasby Play Group would like to say a huge thank you to everyone in the community who continues to make the group such a success. We couldn't do it without you! Thank you!

Jordanna Harris



PLAYGROUP FIRST ANNIVERSARY

Congratulations to the Playgroup on reaching a milestone. It is lovely to see so many young mums, dads, grandparents and carers enjoying themselves on a Monday morning in our village hall, not to mention the children themselves. This is a well-organised group, skilled at providing a range of absorbing activities for the children. It is a wonderful resource for the village and one that takes a lot of effort to get right, as they have. We wish them every success in the future.

BLEASBY FLOOD ACTION GROUP

“A plan in time works fine!”

As three of the four official Bleasby Flood Wardens of some long-standing, we were very keen and interested to join our recently formed Southwell equivalent, called Southwell Flood Forum, at their Community Resilience Conference held at Nottingham Trent University's Brackenhurst campus on Sunday, 15th May. The

Southwell group was formed following the major flood there in July 2013. We remembered well the extent of flooding around us on that occasion, at Lowdham, Lambley, Woodborough, Epperstone, Gonalston and Thurgarton, and the grave difficulties we experienced in trying to get back through those villages to take up flood duties – only to find that Bleasby was barely affected that time! Some may say that it was luck that saved us then but we attribute it to the accumulated positive steps taken within the village over a decade or more. Our drainage dykes have been regularly checked, maintained, developed and extended as experience has taught us and we are therefore as best protected as can be from the impact of torrential and persistent storms – that is, without the installation of major and extensive earthworks.

Southwell has been fortunate in its subsequent support, with funding from various sources including, of course, from its own residents, and has benefited greatly from the advice of flood consultants and the active cooperation and research undertaken by both Nottingham and Nottingham Trent universities. It is hoped that the results of their research will add to our own and be applicable nationally in many respects – especially that of “natural flood management” now being actively encouraged by the Trent Rivers Trust. This is where excess flood water is allowed to stand where it naturally collects, such as on farmland, and thereby slowly dissipates. Also where water courses are modified to slow down run-off and where land adjacent to streams, dykes and drains is left uncultivated. The current trend of farming without ploughing is also being actively encouraged, thereby avoiding soil erosion and channelled water run-off.

At the conference we too were able to make very valuable network links with these institutions and reinforce our long-standing working relationships with relevant local and national bodies. The whole event was an excellent example of communities coming together to help themselves by drawing on the experience, advice and expertise of others to ensure a better outcome when affected by adverse conditions.

“Be prepared” is the Boy Scout motto and this we would encourage every householder in Bleasby Parish to take to heart. We must not become complacent and must accept that we, as a community, cannot expect emergency services to be prioritising us in any case of widespread flooding or other natural disaster. July pluvial flooding has been a recently developing phenomena so do not put those wellington boots and flood guards too far away!

Peter Cast, Martin Shaw and Elaine France

PS - BFAG will be providing you with further information gleaned from this conference and you will shortly be receiving a door-to-door communication from Severn Trent Water. You will find FloodRe insurance details and information on www.floodre.co.uk

BLEASBY WOMEN'S INSTITUTE

In April we had our Annual Meeting and we have to congratulate Monica Richardson on her re-election as President (although she has said that this is to be her last year in that position – definitely!) Again we have a strong and experienced committee (there's one new member!) Like most organisations, it's the few who take on the main responsibilities but, in the WI, lots of members take on various other roles.

May was our resolutions meeting, when we debate and choose which issue we wish to support as this year's National WI campaign.

We have a varied programme this year, drawn up by two of the members. Details are in the Diary of Events. The Book Group continues to meet at the Waggon and Horses – a recent choice of read was "Notes from a Small Island" by Bill Bryson. Each month a group of members take lunch at a different local restaurant or pub. And there are also a number of outings arranged – visits to theatres, walks, etc – in June there is an outing to the Memorial Arboretum and in July to Lenton House. And then there are the vast assortment of games nights, creative activities, sports and quizzes arranged by the County WI Federation.

Plenty for everyone! Meetings on 2nd Tuesday of the month in the Village Hall at 7.30pm.

You can find out more about Bleasby WI at <http://bleasbywi.weebly.com> or by following the link on the Bleasby Community Website at www.bleasbycommunity.uk

BLEASBY LOCAL HISTORY SOCIETY

Our new programme commenced with Stephen Flinders telling us all about the 1916 Zeppelin Raid. None of the members present knew anything about the group attack by these monsters (too big to have been fitted inside Lincoln Cathedral!). Their target was apparently one of the large cities further west, possibly Liverpool or Birmingham, but a combination of small engines, adverse winds and poor navigation meant that they did not get much further west than Ilkeston and Derby. It was fascinating to see Stephen's reconstruction of the various routes by which they hoped to arrive at their target and deliver their bombs and the complete failure of two of them who only reached Norfolk before turning for home.

By the time you read this Ed Compton will have delivered an illustrated talk based on his recent Charity Cycle Ride when he visited many of our local Churches. He tells me that in addition to his county visits he also includes material specific to the village in which he is delivering his talk. On Tuesday 28 June Carol Barstow will be giving us a talk '200 years of Bromley House Library'. The library is situated in the centre of Nottingham just along from the Bell Inn and, in addition to providing the members with very special library facilities, has a lovely garden for them to relax in.

A date for your diary – our Summer Outing on Sunday 17 July at 2pm when we will be visiting Hebb's Farm at Stoke Bardolph where Stuart Dixon will give us a guided tour of his lovely rose garden, tell about the restoration and provide us with a cream tea!

The Society is a very friendly group which meets in the village hall at 7.30 on the fourth Tuesday of most months. Non-members are very welcome for a small fee.

Finally a reminder that booking for the WWII Aircraft crashes memorial steam train fund raising excursion on Sunday 20th August is well underway – please contact Ken Ogilvie or any of the Local History Committee members for details.

Jim Kelsey, Chair

NEWS FROM HAZELFORD RESIDENTIAL HOME

What is happening down at Hazelford Residential Home?

About a week ago we found a duck sitting on seven eggs in one of our garden planters so we were quite excited at the prospect of some ducklings in 28 days' time. Imagine our surprise when another female duck appeared from the back of the garden with seven ducklings close behind her. We realised that these ducklings were a few days old and that maybe the family were trying to get to the river. Our garden is fully enclosed so we opened the gate and sure enough off they set as you can see from the photo. Now all the residents and staff are looking forward to the next brood hatching.



Another bit of recent excitement and enjoyment for the residents was the visit of the Bleasby School Choir. The girls delighted their audience with songs from the shows. There was much toe-tapping and appreciative response from the residents. We hope to see them again in the future as there is nothing quite like a children's choir to lift the spirits.

Lesley (Home Manager), all residents and staff

Note from Editors - Lovely to hear from Hazelford. We hope there will be regular news in the future.

Bleasby Diary of Events

Date	Time	Event	Location
Sunday 29 th May	12 noon	Benefice Service on Tractor Rally Day	Hoveringham
Monday 30 th May		Spring Bank Holiday and start of school half-term	
Saturday 4 th June	9.30am	Jubilee Ponds Working Party	JPs
Sunday 5 th June	10.30am	Service of Morning Prayer	St Mary's
Sunday 12 th June	11am	Service of Holy Communion	St Mary's
Monday 13 th June	7.30pm	Meeting of Bleasby Parish Council	Village Hall
Tuesday 14 th June	9.30am	Jubilee Ponds Working Party	JPs
Saturday 18 th June	1pm - 5pm	Bleasby School Fair	Bleasby School
Sunday 19 th June	9.30am	Jubilee Ponds Working Party	JPs
Sunday 19 th June	10.30am	Benefice Service of Holy Communion	All Saints Rolleston
Tuesday 21 st June	7.30pm	Meeting of Bleasby WI with Jenny Bailey on The Story of the Hornblower	Village Hall
Thursday 23 rd June	All day	EU Referendum	Voting in Village Hall
Tuesday 28 th June	7.30pm	Meeting of BLHS with Carol Barstow on 200 years of Bromley House Library	Village Hall
Saturday 2 nd July	9.30am	Jubilee Ponds Working Party	JPs
Saturday 2 nd July	7pm	Safari Supper (see further information on page 26)	Various homes in the village
Friday 8 th July	All day	Inset day for Bleasby School	
Sunday 10 th July	11am	Service of Morning Prayer	St Mary's
Monday 11 th July	7.30pm	Meeting of Bleasby Parish Council	Village Hall

Tuesday 12 th July	9.30am	Jubilee Ponds Working Party	JPs
Sunday 17 th July	9.30am	Jubilee Ponds Working Party	JPs
Sunday 17 th July	10.30am	Benefice Service of Holy Communion	St James' Halloughton
Sunday 17 th July	2pm	Bleasby Local History Society visit to Hebbs Farm	Stoke Bardolph
Monday 18 th July		Deadline for August's Bleasby News	
Monday 18 th July	6.30pm	Bleasby WI's annual barbecue	Gibsmere Farm
Thursday 21 st July	Evening	School's Summer Beach Party	Rolleston Village Hall
Sunday 24 th July	9am	Service of Holy Communion	St Mary's
Monday 25 th July		Inset day for Bleasby School followed by summer holiday break	
Sunday 31 st July	10.30am	Benefice Service of Holy Communion with lunch	St Denis's Morton



Fun around the maypole

We are holding another

SAFARI SUPPER

**In Bleasby on Saturday
July 2nd 2016**



You buy a ticket for £10 per person

Any number of people can come – doesn't have to be couples.

You will be given the destination for your starter at 7pm. When you get there and have eaten you will be given the location of your main course at 8pm, and then a third location for your dessert at 9pm. We will finally meet up in one location for coffee at 9.45pm.

We need hosts for each course.

To host you need to provide a starter, main or dessert for 8 people (including you) at your house. Please let the organizers know of **ANY DIETARY REQUIREMENTS** on booking your ticket.

It is bring your own alcohol/drinks or hosts can provide.



All proceeds to Beaumont House,
Newark.

**Please contact: Ali Sutherland 831026 or
Heather Kemp 831027 or Karen Clark 831024.**

IRISH PROVERB QUOTED ON HAVE I GOT NEWS FOR YOU

There are good ships
And there are wood ships,
The ships that sail the sea.
But the best ships are friendships
And may they always be.



SARAH ROSCOE
MOBILE HAIRDRESSING

**I COVER THE SOUTHWELL AND NEWARK AREA
INCLUDING SURROUNDING VILLAGES**

**HOME PHONE: 01636 831089
MOBILE PHONE: 07800 516553
E-MAIL: SL.ROSCOE@TISCALI.CO.UK**

WWW.SARAHROSCOE.COM

HYDEBARKER
WORLDWIDE TRAVEL & ADVENTURE



**100% PURE
NEW ZEALAND
SPECIALIST**

Tel: 01636 816 262

www.hbtravel.co.uk | 1 King Street, Southwell



GABTA
AFFILIATED

BOOK GROUP NEWS

It was with some enthusiasm that the Book Group chose one of Bill Bryson's books for this month's read. Bill Bryson is a prolific and humorous writer. He has lived in both America and Britain for extended spells, and has much admiration for Britain and especially London. In the book "Notes from a Small Island" he sets off to travel from the West Country to John O'Groats mainly using public transport or walking and visiting places of beauty, historic sites, towns and cities.

At the beginning of the book his general tone was of trying to find situations where he could poke fun at people, criticise standards and end up slightly drunk in the nearest pub. Some of the group found his language "crude". However, as he travelled north he became more descriptive, more enthusiastic and - interesting. Throughout he had many insights into the British culture and frequent sound bites that made many chuckle out loud. He talked of the British habit of apologising even when making complaints!!

He also included historical information at intervals, including such varied facts as the number of historic buildings, medieval churches or footpaths in Britain.

The book was written in 1993 so is somewhat out of date in view of the changes in many of our cities such as Liverpool and Newcastle. He is a writer of much talent but this was not one of the books that the majority of our group would recommend. However we had a lively discussion as usual and a very happy social time as we finished with soup and sandwiches, thanks to the Waggon and Horses!

Phyllis Hastings

LENT LUNCHES 2016

Thank you to all who supported the Lent Lunches this year and to all the hosts who welcomed people in to eat their very delicious soups of every variety!

£630 was raised for the charities which were chosen by the hosts. These were St James Church Halloughton: St Mary's Church Bleasby: the Bishop's Welcome Fund for Refugees: Unicef: Arthritis Research UK: and Doctors Without Borders.



June Church Services in the West Trent Group

(HC = Holy Communion MP = Morning Prayer EP = Evening Prayer)

	Bleasby	Halloughton	Hoveringham	Morton	Rolleston	Thurgarton	Upton
Sunday 5th	10.30 MP		6pm HC	9.00 MP	10.30 All Age	9.00 HC	10.30 HC
Sunday 12th	11.00 HC	6.00 EP	9.00 HC	10.30 All Age	6 pm HC	10.30 HC	10.30 MP
Thursday 16 th							Zip Bam Boo 4.00
Sunday 19th					Benefice HC 10.30		
Sunday 26th		9.00 HC	10.30 All Age	10.30 HC	10.30 All Age	10.30 with Methodists	10.30 MP

July Church Services in the West Trent Group

	Bleasby	Halloughton	Hoveringham	Morton	Rolleston	Thurgarton	Upton
Sunday 3rd	10.30 MP		6 pm EP	9.00 HC	10.30 MP	10.30 All Age	10.30 HC
Sunday 10th	11.0 MP	6.00 EP	10.30 HC	10. 30 All Age	11.0 MP	9.00 HC	10.30 MP
Tuesday 12th							10.00 HC
Sunday 17th		Benefice HC 10.30					
Thursday 21st							4pm Zip Bam Boo
Sunday 24th	9.00 HC		10.30 All Age	10.30 All Age	10.30 HC	10.30 Methodist Service	10.30 MP
Sunday 31st				10.30 HC Benefice lunch			

MARGARET CROWDER

We are sad to report that Margaret Crowder of Orchard Close has died at the age of 87. Her granddaughter Sarah Roscoe tells us that Margaret was born in Thurgarton in 1929 and grew up in Hoveringham. She had lived in Bleasby for forty-four years and was a well-liked resident – she helped at the Lunch Club for many years. She was a proud grandmother to eight grandchildren and eight greatgrandchildren. She will be sadly missed by all her family and friends.

MARGARET AND DONALD BALL OF HORSTEAD

Margaret Grace Ball: 6th August 1935 – 3rd February 2016

Margaret Ball was born in 1935 in Gedling. She attended Priory Road County Primary School, Carlton, before moving up to Station Road Girls School where she was in the first intake year to stay on until the new school leaving age of 15. Leaving school in 1950 she went to Clarendon College for a year to study shorthand and typing. Margaret went on to work as a typist in various offices including those of the local education office, an insurance company, the Foreign Touring Department of the AA and the School Health Service.

As a child she attended Carlton Brownies and Gedling Guides which gave her a love of guiding which lasted all her life. At the age of 15 she became a Sunday School teacher and, through the Youth Fellowship, Margaret enjoyed Diocesan Holidays. Other social activities included regular hikes and camps in the Peak District. It was through their love of the outdoors that Margaret and her future husband Donald met in 1957. They were married at All Hallows Church in Gedling in 1963. A few years her sister married Donald's brother at the same church.

Margaret and Donald settled into married life in Bleasby and it wasn't too long before Margaret was invited to join the local WI by Karen Heath. Within four months she had been persuaded to join the Committee by the President, Shirley Milner, and within the year she had taken on the role of Secretary. This was the start of Margaret's long and enjoyable membership, eventually becoming President. In more recent years, she was involved with programme planning and throughout her fifty years as a member, has been a delegate for Bleasby WI at various group and county meetings. Latterly she enjoyed darts and whist not just for team successes but also for the fun and laughter that it provided. For Margaret it was Bleasby WI that gave her a life outside the home and friendship and for this she was very thankful. Looking after and supporting her husband, Donald, with his illnesses restricted their social life for many years. But her skills in cooking and sewing were always a great joy to her.

Having enjoyed being a Brownie and Guide in her younger years, Margaret took on the role of Assistant Guider when the 1st Bleasby Guide Company was formed in September 1977, going on to being its leader until 1982. Margaret was a member of the congregation at St Mary's Church as well as helping to keep the church clean. For a number of years she helped Liz Cousins at the playgroup in Fiskerton and acted as relief 'lollipop lady' for Bleasby School. Through these various activities, Margaret became well known to young and old in the village. She loved village life and all that it stood for. Even when she was affected by ill-health in the final years of her life, she was determined to remain in her own home in the village where she had enjoyed living for over 50 years, which she did until just a few weeks before she died.

Donald Ball: 5th August 1927 – 14th January 2010

Donald Ball was born in Tibshelf, Derbyshire. He was the third of four children and his father was the under-manager at the local pit. The family moved when Don was five, eventually settling in Gedling in 1938 where his father became the Safety Officer at Gedling pit. Having already attended four schools, Don completed his primary education at Gedling Primary School before starting at Chandos Street Boys School in Netherfield. Leaving school at 14 in 1941, Donald went to work for a number of companies in different capacities gaining significant skills in various fields, mainly as a mechanical engineer but also as a cartographical draughtsman with the Gas Board, and a commercial artist for advertising companies. In his spare time he taught himself the skills of writing in copperplate, photography, wood carving and sign writing.

Donald and Margaret bought their cottage in Bleasby (now known as “Horstead”) having seen it advertised under a box number in a local paper. They both came from families whose homes were fitted with all ‘mod cons’ so it was somewhat of a downward step when their first home as a couple was a two up and two down cottage with a lean-to single storey extension that sufficed as a kitchen of sorts, no bathroom and a ‘privy’ in the garden. So began a couple of years of work as they knocked down and rebuilt the single storey lean-to to provide a kitchen downstairs with a bathroom, toilet and dark-room for photography upstairs. Donald being able to, seemingly, turn his hand to anything, enjoyed being able to complete much of the internal work himself. He also designed and dug a rectangular brick-lined inspection pit with a hoist in the driveway to enable him to service family vehicles. He also designed and built a trailer with a removable, sliding glass-fibre lid which housed the family camping gear.

Donald was well-known for his skill with a pen and was often asked to make posters promoting various village events. A number of house-name signs in the village were crafted by Donald, one or two of which may still be in existence. The “Bleasby Village Store” sign was another. And somewhere in the village is a framed photograph of a written message to the Queen from Bleasby village in celebration of her Silver Jubilee. Donald was given the honour of writing the message in his beautiful copperplate hand!

Another consuming interest was railways and steam engines. This led to a complex two-level design for a model railway with his own working points for the track which he proceeded to build, the whole thing mounted on wheels for easy manoeuvring.

Long-term illness prevented Donald from enjoying much of a life outside the home but his many skills and hobbies and his family gave him fulfilment within it.

Margaret and Donald loved their family and enjoyed all that family life offered. They took delight in their three children and two granddaughters and greatly enjoyed occasions when all the family could be together. They never failed to encourage and support the family in their ambitions and endeavours.

Margaret passed away on 3rd February 2016 and is buried with Donald in Bleasby Churchyard.

We are indebted to Sue Hickson, nee Ball, for providing this information about the lives of her parents

CUT DOWN ON THE MOWING! – CREATE A HOME FOR NATURE!

Mowing your lawn less, and letting parts of it grow long, saves you time and helps give nature a home

The grasses will set seed, wildflowers will grab their opportunity to bloom, and the longer stems will create a sheltered microclimate – a mini jungle through which beetles and other small creatures can wander. You'll see all sorts of insects roving through the long grass, pollinators coming to the flowers in the lawn, and hopefully sparrows and goldfinches coming to feed on the seeds.

You can continue to give the mower a rest into autumn. But cutting it at the end of summer mimics the hay meadows of olden days.

Some of you may leap at this great excuse to cut down on mowing. For others, you may be nervous about what the neighbours will think! Don't worry – it will still look like you care for your garden! You just need to decide which areas you could leave to grow naturally.

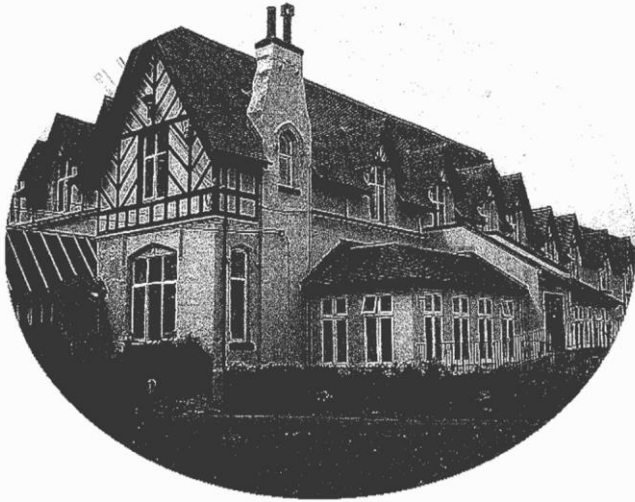
To ensure you have presentable paths the trick is to mow them through the longer grass. They can be straight paths in a regular pattern, curving paths, or a mini-maze which kids will love to run along. There is an extra wildlife incentive for mowing paths – there's evidence that creatures actually like using the short paths to move through the meadow, darting into the longer grass to get food.

If you leave your areas of long grass until July, and then mow through until the grass stops growing in late autumn, you will create a spring meadow. For a summer meadow you should mow once in late March or early April and then leave it until September before mowing once or twice in the autumn. On a warm day in summer, get down at ground level and look closely. See what flowering plants were in your lawn all along but never had the chance to flower, such as daisies, clovers and speedwells.

Advice from the RSPB

TERRY CADMAN

Terry Cadman of Station House died on May 6th in QMC, Nottingham, after a long illness. We offer our condolences to Val Cadman and her family. (An obituary will appear in the August issue).



Hazelford

The Provider of Quality Care

Our home is situated in a beautiful location with open views of the river and surrounding countryside. With lovely gardens and an abundance of wildlife, this makes Hazelford a delightful location for our residents, to some of whom we offer a short break; for others we become their home.

We pride ourselves in offering a home from home environment with an excellent ethos whereby our residents are involved in the decisions we take. We focus on our residents' aspirations, ideas, views and suggestions.

We have a person centred approach to the care of the residents: this approach is vital to ensure the best possible outcome and wellbeing.

Dementia care is a specialist area: we ensure with sensitivity that the resident is supported continually with person centred care planning, reinforcing daily the aspects of their lives they enjoy to ensure wellbeing and pleasures on a daily basis as, sadly, the previous day may be forgotten.

Our aim is to offer stimulating activities, with one to one time for those who may have dementia: we specialise in this area and our approaches create a relaxed harmonious environment for all.

Our bedrooms are large with views over the countryside and offer a choice of colour and furnishings, personalising them to suit our residents' preferences and choice.

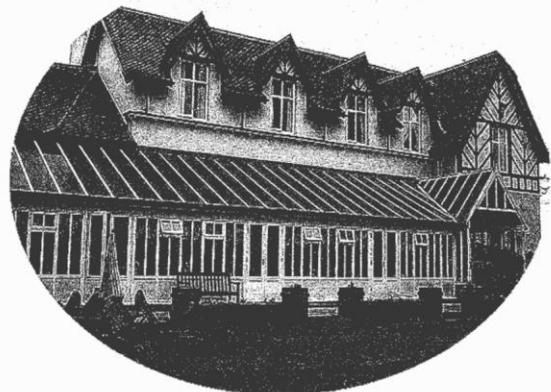
Please feel able to visit our home at any time – a warm welcome awaits you. We encourage families to also have an input into the plans the home may make. We hold family and friends of the home evenings.

With spring and summer comes along a plan of social events: for the summer an annual garden party, summer fair and schedule of outings to various venues.

HAZELFORD

**Boat Lane
Bleasby
Nottingham
NG14 7FT**

Tel: 01636 830207





SOUTHWELL GARDEN FESTIVAL SUNDAY 19TH JUNE

Southwell Garden Festival is on Sunday 19th June and is a rare opportunity to visit fifteen very different gardens across the town between 12 noon and 5pm. There will be much to enjoy, from the informality of spaces planted with perennials and roses to impressive lawns and terraced gardens developed over twenty years. Plant Hunter Fairs will be coming to Southwell with their specialist nurseries for the first time and will be at Southwell Minster Gardens from 11am-4pm - ticket £1. Delicious tea and cakes are available in the state rooms of the Minster or enjoy a glass of Pimms and a cream tea in an organic walled garden with sweeping lawns shaded by a mature walnut tree.

The Open Gardens ticket is £6. Receive £1 off when you present your Plant Fair ticket. Proceeds to Beaumond House Hospice, Reach and Southwell Gardening Club.

D.J. Hall Funeral Directors

Southwell & District Funeral Service

Your local independent funeral directors offering a
personal and caring service

Verne House

62, King Street

Southwell

TEL: 01636 812481

EMAIL: sdehall2000@btconnect.com

WEB: www.djhallfuneraldirectors.co.uk



The Tree Fellers of Bleasby

Tree Felling

Tree Pruning

Hedge Cutting

Tree Dismantling

Garden Services



We specialise in the safe and affordable removal and pruning of trees and shrubs.

Call for a free quotation from a qualified arborist.

Free Quotations contact Paul Wood

Phone: 07956 905287 or 01773 535 886

Email: info@thetreefellers.co.uk

ROB BROWN LTD PLUMBING AND HEATING

MOBILE 07973890499

NOW BASED IN BILSTHORPE

email robinb9@gmail.com
more than 20 years experience

INSTALLATION SERVICE & REPAIRS
OF DOMESTIC GAS APPLIANCES &
HEATING & HOT WATER SYSTEMS

ALL PLUMBING WORK UNDERTAKEN
SMALL BUILDING WORKS
AND PROPERTY REPAIRS
ELECTRICAL REPAIRS

DO YOU RENT PROPERTY?
WE DO LANDLORD,S GAS CERTIFICATES
MAINS PRESSURE HOT WATER
Fully insured /no call out fee



TRENT CHURCHES CHOIR

Our Spring Concert at Thurgarton on 16th April was well received by an audience of 120, including a good number of our Bleasby friends. The collection amounted to £350 and was divided between Thurgarton Priory Church and the Choir Fund.

Thank you for your support.

John King

RAILWAY CROSSING CLOSURE NOTIFICATION

Network Rail has informed residents in the immediate vicinity of the rail line that the crossing at Bleasby will be closed to traffic for major crossing and barrier works from:-

02.00 on Saturday 17th September until 08.00 on Monday 3rd October

Morton and Rolleston crossings will be closed from:-

02.00 on Saturday 8th October until 08.00 on Monday 24th October

Fiskerton Crossing will be closed from:-

02.00 on Saturday 8th October until 01.00 on Saturday 22nd October

Staythorpe Crossing will be closed from:-

02.00 on Saturday 22nd October until 08.00 on Monday 7th November

Diversions routes will be published before the work commences and information will be sought on how those living on opposite sides of the crossing will be enabled to cross on foot.



Gypsy Lane pheasant nest, and the hatching chicks!



ACADEME ROOFING

Quality Roofing Services



NOTTINGHAM'S NUMBER 1 ROOFING PROFESSIONALS

CALL OUR OFFICE ON:
0115 950 6444

“Our reputation is built
on **QUALITY**, first class
customer service, reliability
and professionalism”



Business Directory
Registered Member



LOCAL AUTHORITY APPROVED
ROOFING CONTRACTORS

**All Areas of Nottinghamshire covered
CALL TODAY!**

- Slate & Tile Roofs
- Single Ply Membranes
- Flat Roofs
- Guttering, Soffits and Fascias
- Chimneys Re-Pointed
- Industrial Roofs/Domestic
- Specialists in all lead work
- Re-roofs & New Roofs

OVER 30 YEARS EXPERIENCE • FREE ESTIMATES

www.academeroofing.co.uk • office@academeroofing.co.uk

23 • Little Tennis Street • Colwick • Nottingham NG2 4EL

LUNCH CLUB

The lunch club continues to flourish. We have welcomed four new members recently, adding different topics of conversation and interest to the group. There are now three men who attend regularly, which we hope will encourage other men to join. It can be quite daunting to be a lone man among so many women! Caroline and Andrew and the staff offer a two course hot lunch, followed by tea or coffee, every Thursday at 12 o'clock; they always make us welcome and take care of our every need. We recently enjoyed an al fresco lunch under the trees in the garden on a day when the weather was just perfect. It doesn't get much better than that.

Rachael Andrew

AN AMENITY WE HAVEN'T LOST

The Mobile Library

The library visits Bleasby, Gibsmere and Hazelford once a month this year on **24th June, 22nd July, 19th August, 16th September, 14th October, 11th November and 9th December** – see below for locations and times.

Stopping place	Arrives	Leaves
Bleasby Station	11am	11.15am
Orchard Close	11.20am	11.40am
Elmore's Meadow	11.45am	12.00noon
Gibsmere	12.05pm	12.20pm
Hazelford	12.25pm	12.40pm

The mobile library holds a great range of books for all tastes and ages. It's another amenity which could well be "use it or lose it"!

VILLAGE HALL

Thank you to the Village Hall Management Committee for organising and overseeing the redecoration of the hall, following the installation of a new heating system and other improvements, thus ensuring it is kept in good order for the future.

You will also have seen a couple of photo examples in this edition of the ever changing display of flowers and topical features in the container outside the village hall. Whatever the season, celebration or village activity, the theme is reflected there. Subjects such as Advent, St George's Day, Maypole Dancing, to name but a few, have all been celebrated amongst the floral displays. Our thanks go to Vivienne Mayfield for sharing her talent with us all. Take a look next time you are passing or when you next attend a village hall event.



CALL: 0800 859 5269

**Garden design
and landscaping
that is beautiful,
practical
and affordable**



**Landscape Gardeners
since 1973**



Landscaping



Patios & Paving



Garden Fencing

Whether you want a traditional garden, more modern garden, or even a themed garden, our expert designers and landscapers can help. We can incorporate pet and child friendly features to ensure the whole family can enjoy the garden.

**ALL OUR WORK IS
100%
GUARANTEED**

www.thegardendesignteam.co.uk



Your local Hearing Care Specialists

0115 961 8351

FREE HEARING CHECKS

EAR WAX REMOVAL

TINNITUS SUPPORT

HOME VISITS

Whether you are looking into hearing issues for the first time or are struggling with your existing hearing aids then **Correct Hearing can help.**

We are a family run and owned independent practice, with over 30 years experience.

Call today for an informal chat or to request your FREE Hearing Guide 0800 368 47 47



Sarah Vokes



Damian Eyre

Web: www.correcthearing.co.uk

Email: info@correcthearing.co.uk

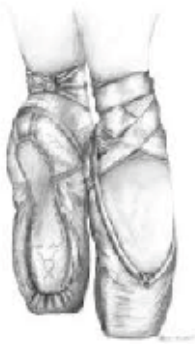
242 Oakdale Road, Carlton, Notts, NG4 1AD



We have Ballet, Modern and Tap
Dance Classes in Fiskerton for all
ages!

Why not let your Precious Princess or Playful Pirate take their
first steps in to the Magical World of Ballet! With our Princess
and Pirate Ballet class for ages 3 and over!

We have classes for adults too! Zumba and
Tap
For more information please visit our
website



www.attitudedanceschool.com
info@attitudedanceschool.com
07974 745740



Come and join us
for

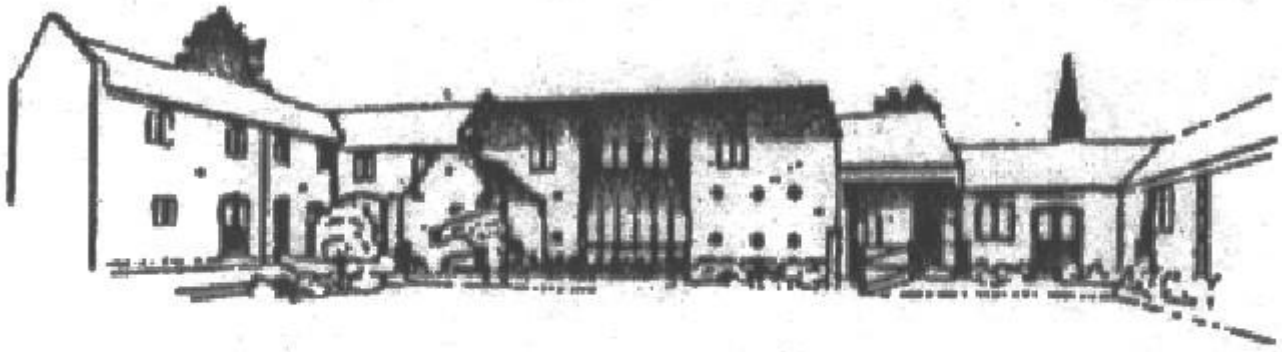


with



Wednesday 7.30 - 8.15pm
At The Arthur Radford Hall
Fiskerton cum Morton

For more information visit www.attitudedanceschool.com
Or call 07974 745740



THE BYARS

A small, family owned and managed, independent Care
Home situated amidst the rural landscape of the Trent
Valley

The highest quality care in the highest quality
accommodation

Our home offers long and short term care for the elderly

Viewing welcomed. Further details on request

THE BYARS

· CAYTHORPE · NR. LOWDHAM ·
NOTTINGHAMSHIRE · NG14 7EB

REGISTERED NURSING HOME

Tel: 0115 9663981

Ben Morgan

Painting & Decorating Services

T: 01636 831333

M: 07775 888851

E: ben@zeboit.com



Domestic

Rented

Office

Insurance

"We have used four different decorators over the last few years and every time, there has been a problem and the job has not been carried out to a satisfactory result. Ben was recommended to us and the job he did was fantastic and as we wanted. He is very professional in both his work and his personality. He offers very competitive rates and I would definitely use again and highly recommend."

Nicola & Nigel Bennett, Goverton

"Ben has just completed our kitchen extension and done a fantastic job, I would highly recommend his services. He is highly skilled and professional with in depth knowledge of paint and products, ensuring our walls are wipeable and the paint will not fade. We feel this is money well spent as our decoration will stand the test of time in a heavily used kitchen."

Janine and Chris Ford, Southwell



[Facebook.com/BenMorganPainting&Decorating](https://www.facebook.com/BenMorganPainting&Decorating)







Tug-o'-war to celebrate St George's Day and the Queen's 90th Birthday

Peter Cast, Chair of Bleasby Parish Council, preparing for the placing of the time capsule (made by Michael Coombs and filled by children of the parish) under the new walnut tree planted to commemorate the Queen's 90th birthday



Whilst every effort is made to ensure accuracy, the editorial team cannot accept responsibility for errors or omissions in articles appearing in Bleasby News. The views expressed in Bleasby News are not necessarily those of the Editors nor of Bleasby Parish Council. Bleasby News is distributed by local volunteers to whom we remain very grateful. Printed by Toot Hill School Reprographics

THE WAGGON & HORSES

GYPSY LANE, BLEASBY



YOUR LOCAL PUB!

LIZ AND IAN

830283 07930 089758

waggonbleasby.co.uk