

BLEASBY NEWS



COUNTY CHAMPIONS

AUGUST 2017

Our youngest reader?

It's Amelie!



SPORTS SUCCESS FOR BLEASBY SCHOOL

Our school sports people are doing so very well – on the cover is a photo of our Year 6 hockey team having won gold at the Nottinghamshire School Games - they are now county champs. They are Martha Collyer, Frankie Scurfield, Evie Wicks, Henry Newell, George Hobson and Ethan Blackmore. We have also learned that Bleasby School's football team finished first out of 12 teams in the Small Schools League, that the netball team came third in the Small Schools League and, at the Minster Schools Cross Country Competition, the boys finished first and the girls second in their categories with 12 of the 16 competing qualifying to represent the district at the county finals. And, to top it all, Evie Wicks was selected to represent Nottinghamshire in the National Cross Country Finals!

For those lucky enough to be at Bleasby School's Sports Day it was a great afternoon, albeit very humid. All witnessed the endeavour, enthusiasm and talent of so many of the pupils. Well done to all of them and to those who support their training.

WELCOME TO THE HIGH SUMMER EDITION OF BLEASBY NEWS

The theme of the last couple of months has surely been gardens. Nationally there have been Chelsea, Chatsworth and Hampton Court Flower Shows; locally we have had our Open Gardens and Church. The show gardens here were all beautifully presented and rivalled the national shows for their interpretations of what a rural garden should look like.

We enjoy our gardens with all their profusion of colours and scents – even though they can be hard work! We also appreciate the visitors to the garden – that's all the birds, butterflies and small mammals (of the wild variety). One small mammal that is a joy to find, even to find traces of, is the hedgehog. This delightful, and useful to the gardener, animal has been snuffling around the countryside for millions of years but now they are facing critical decline due to many factors such as traffic, garden tool casualties, loss of green spaces and fragmentation of their habitat. This is where the hedgehog experts say we can help – by making sure that, if we have fences around our gardens, we leave small gaps at the base to let the hedgehogs move around freely – they need a larger foraging area than just one garden – and remember they are foraging for things you don't welcome like slugs and snails!

Happy hedgehog days!

Your Editors, Rachael and Barbara

We always look forward to receiving your articles, photos, ideas, news etc so please send plenty for the October/autumn edition to:- Rachael Andrew, Sutton House, pran@suttonhs.fsworld.co.uk or Barbara Cast, Little Dower House, barbaracast@btinternet.com by Monday 18th September.

BLEASBY PARISH COUNCIL NEWS

We are delighted to report that the response to the Parish Plan Questionnaire has been most encouraging and that it is already highlighting the ways in which the Parish Council can progress in order to achieve the best for Bleasby. We are anxious to get feedback from all villagers and from all organisations operating here and so we would urge everyone to take this opportunity to forward to the Parish Plan Steering Group any ideas, comments and feelings that you have yet to express, even though the deadline for statistical information to be compiled has now passed. There will be follow-up meetings held to report on the findings of the questionnaire analysis and progress and these will be seen as a forum, and essential part of the process, to ensure that the final Parish Plan fairly reflects the views of all parishioners. The Steering Group would like to sincerely thank you for your cooperation and involvement in the project so far.

The community spirit and pride across the parish has been demonstrated by the response to our entry into the Best Kept Village Competition and we are delighted to report that we have met the demands of the first round of judging and now pass to

the next round. Thank you for all your individual efforts in putting the “finishing touches” to our ‘parish image’.

Village grit and determination has been amply demonstrated by the forming and ultimate success of a group of residents in halting, at least temporarily, the erection of a telecommunications mast on Sycamore Lane. Thanks to them we are now in the fortunate position of being able to properly negotiate a more appropriate and, hopefully, just as effective a site elsewhere in the parish. Well done that group!

Another example of parish cohesion and cooperation has been visibly demonstrated on our kerbsides on Monday morning bin collection days when a range of speed-limit stickers, designed by children of Bleasby School, are on full display to any speeding drivers. We are hoping to get as wide a coverage as possible throughout the main route through Goverton and Bleasby and would, therefore, welcome offers of further bins to send out this important message. Please contact the Parish Clerk or ring me, Peter Cast, on 830284 if you would be willing to join this project. Once given permission, we will affix the signs to your bin(s) on the Sunday evening before the following Monday collection. Thanks to those who have already ‘submitted’ their bins and to Angela Dunning for this initiative!

This summer the parish should finally acquire official ownership of Ferry End, the small enclosed area of land by the river at the end of Boat Lane at Hazelford, following twelve years of official notice to any possible claimants to the land. Thanks are due here to members of the 2005 Parish Council who had the foresight to rescue a prominent and potentially attractive parish feature that had become spoilt by illegal ‘squatting’ on the land leading to an accumulation of sheds, caravans and rubbish. Thank you for your ‘gift’ to the parish, you councillors of yore.

Meanwhile the present Parish Council receives occasional polite, well-motivated requests to address problems such as hedges that overhang pavements making the passage of pedestrians, pushchairs, wheelchairs and gaggles of children more difficult and dangerous – plus an added drenching in wet weather. An additional problem raised has been bonfires that are lit and then cause a nuisance: this has been a particular irritation in periods of warm weather when people are hanging out their washing; relaxing with friends in their gardens; cooling down after an oppressive day or just enjoying their gardens; it also is a problem for those inside with windows open seeking shade and coolness, attempting to sleep or get children to sleep on hot evenings. Even more significantly such fires can seriously affect people with breathing problems already exacerbated by the high temperatures. The need for bonfires is occasionally inevitable but please try to keep the lighting of them to a minimum and at a time and position so as to create as little an impact on neighbours as possible. The closure of the Fiskerton recycling centre increased the problem of garden waste disposal but the introduction of the brown bins should have helped mitigate this loss.

Other constructive Parish Council queries have included progress made on the future of the MediLink bus service to Southwell, problems with our sewerage system during

periods of high rainfall and the identification of specific houses in the case of emergencies. In the first instance we are pleased to report that the MediLink bus service, thanks to an uptake in usage, will continue, with monitoring, until April and that the 300 bus will hopefully be reintegrated back into an effective Southwell service. The Council continues to seek a full appraisal of our mains water and sewerage system by Severn Trent with a view to creating an improvement plan and its staged introduction over the next ten years. In the case of property identification, especially in emergencies, the PC has debated this issue twice and has produced a report for discussion. It is recognised that many householders do not want to be numbered and are very attached to their house names but the PC wishes to bring to the attention of all residents that, without clear identification of the existence and location of their homes, there could be serious consequences if fire, ambulance or police personnel were delayed in locating their property in an emergency. Such a case recently occurred. Please try to make sure that your property is clearly identifiable from the road it is on and, where there are several properties located down a single-track drive, agreement with neighbours on appropriate signage at the entrance to the drive would be most helpful.

The Parish Council extends a cordial invitation to you to attend all or part of its meetings to enable you to engage with its democratic processes. Meetings are held on the second Monday of each month, except in August. We look forward to meeting more of you as the Parish Plan programme develops and hope that, in the meantime, you will not hesitate to contact us as and when the need arises.

Peter Cast, Chair, on behalf of the Parish Council

FROM THE REVD PHIL

Dear All

*"Loneliness is the most terrible poverty."
Mother Teresa*

*"It is strange to be known so universally and yet to be so lonely."
Albert Einstein*

Dear All,

I hadn't seen my granddaughter for about two weeks due to the holidays. It was reported that Annabelle (3.5yrs) said 'we haven't seen Pops for 20 years!' Children say the greatest things sometimes. I heard some quotes from children writing about loneliness*. One said that a good solution would be if food could talk. Then we could have lots of conversations throughout the day. Tough on the Battenberg cake which would get a very curtailed chat in my house!

Children know what loneliness is. It's not just something 'needy' people experience. The young as well as the old or bereaved feel it keenly for a variety of reasons.

We should be able to enjoy solitude but are we not made for relationship? Isn't community about a network of relationships that sustain our humanity? We live in villages with a great community spirit. I know of people who are really good at 'popping' in and looking after their neighbours. I sometimes wonder if we could (should) do more? In Bleasby, for example, there is a small St Mary's visiting team already. Did you know? Could you give some time to it, or rather to the people they try to visit? After all two weeks can seem like 20 years without seeing people you know and love.

Blessings

The Revd Phil

* The source was the Bishop's sermon on Sunday, 18th June, on the occasion of the seven parishes becoming a Benefice.

"I am with you always, even to the end of the age" Jesus promised...

phil_07@btinternet.com - www.westtrentchurches.co.uk - 07720010066

The Revd Phil is contactable as above or via the administrator for the West Trent Group: Paula Carlin on 07419 176021 or at beneficeofwesttrent@gmail.com

WELCOME

Lots of babies to welcome since our last edition –



Millie-Rae at Station Cottages



Arthur at Station Cottages



Kit in Manor Close



Twins, a little girl called Tui and a little boy called Nikau, at Garden Cottage

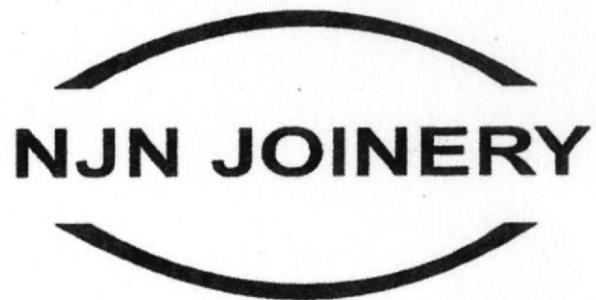
We are also pleased to welcome the Coleman family to Field House and the Campbell family to Magnolia House.

Are you aware that you can sign up for email updates on local information from the following website www.bleasbycommunity.uk. The community website is maintained and monitored by Bleasby Parish Council. PC information can be found on the Council website www.bleasbyparishcouncil.uk.

NJN JOINERY

Phone: Nigel Newcombe
on
01636 525506
or
Mobile: 07837 235427

**ALL TYPES OF JOINERY
AND
MAINTENANCE WORK
UNDERTAKEN**



Golden Charter Funeral Plans from **D. J. Hall Funeral Directors**

Making sure everything goes to plan



D. J. Hall Funeral Directors
62 King Street, Southwell,
Nottinghamshire NG25 0EN
(01636) 812481

A funeral plan leaves nothing to chance and provides **peace of mind** for you and those you care about.

We recommend funeral plans from Golden Charter, the UK's largest provider of plans to independent funeral directors like us. With a Golden Charter funeral plan you'll benefit from:

- **Fixing the cost** of our services at today's prices
- **Reassurance** for your family – no uncertainty or difficult decisions
- **Complete flexibility** to choose the funeral you want

Taking out a funeral plan is one of the most **thoughtful decisions** you could make.

Golden Charter 
Funeral Plans

The UK's largest independent funeral plan provider
yourfuneraldirectors.co.uk

BLEASBY OPEN GARDENS AND CHURCH

Sunday, 11th June, turned out to be an ideal day for our celebration of Bleasby Gardens – dry and sunny but not too hot. We were pleased to welcome hundreds of visitors once again and all enjoyed a very happy day. The gardens in their various guises all looked lovely and we were pleased that Bleasby School's garden was open for the first time and attracted much interest. St Mary's hosted displays from village organisations from the Playgroup to the WI, Bleasby Bikers to Bleasby Local History Society – and many more. The Glebe Field, next to the church, and the traditional hay meadow on Gypsy Lane were both awash with wild flowers and looked beautiful.

Many thanks are due to our gardeners for opening their gardens, the Waggon and Horses for the use of their carpark, all those who made cakes and served delicious refreshments in the Village Hall, those who gave and sold plants, and the team who put so much work into making it such a happy day. Very welcome amounts were raised to be shared between the Village Hall and the Church – and with a donation to buy secure water-butts for the school garden!



LAKE DISTRICT HOLIDAY COTTAGE

Borrowdale Road, Keswick

3 Bedrooms | Sleeps 6

TO LET

Fully refurbished holiday cottage with gas central heating,
open fire place and private parking

Views overlooking the fells, front and rear gardens,
superb location

For further details please ring

01636 830209 | 07812 101303

**A. Rickett & Son,
Bleasby
Builder & Contractor
Tel: 01636 830468**

SPECIAL COMMUNION SERVICE AT THURGARTON AS NEW BENEFICE IS CELEBRATED

The beautiful Priory Church of St Peter's, Thurgarton, was the setting for a special Holy Communion Service of Baptism and Confirmation, and to celebrate the newly formed Benefice of West Trent. Parishioners from the seven parishes that make up the new Benefice came together on Sunday 18th June to enjoy the service and a buffet lunch afterwards.

Following a welcome by the Revd Phil White, vicar of the West Trent Benefice, The Bishop of Southwell & Nottingham, the Rt Revd Paul Williams, gave the sermon. Following this Holly Longstaffe and Nicola Cocker were baptised and confirmed – and Christine Andrews, Philip Bainbridge and Kelly Throssell were confirmed.

The Benefice has been in the making for the last five years and now the Tons: Upton, Morton & Rolleston with Fiskerton: and the Trent: Bleasby with Halloughton and Thurgarton with Hoveringham: will work together in the task of mission and ministry across the Benefice, whilst retaining the individual character of each community. "We aim to maintain a worshipping presence in each village and explore how to reach out with the message of God's love in Jesus," said Phil.



Article from Diocesan News - The Bishop, Phil and the newly confirmed group at the West Door of Thurgarton Priory Church

LIFEBOATS

The Calverton Lifeboat Fundraising Group invite you to a Coffee Morning in Bleasby Village Hall on Friday October 20th 2017 from 10.00am until noon. There will be a souvenir stall selling Christmas cards and calendars, a raffle, a tombola and a cake stall.

One of the RNLI's goals for the next ten years is to halve the number of lives lost to coastal drowning across the UK and Ireland. Please come and join us and help us to support Lifeboats on the coast and Lifeguards on the beaches.

Thank you.

Ann Buckley

CHURCH NEWS

Open Gardens and Open Church.

On behalf of St Mary's we would like to thank all those who helped to make the Open Gardens and Open Church Sunday such a success - garden openers, refreshment makers and servers, car park attendants, signing and advertising volunteers, church stewards, money handlers and visitors whose appreciative comments all helped to make the day so enjoyable. It was particularly good to have the school gardening club involved this year. (see report on page 8)

Bishop's Visit.

Bishop Paul led the service at Thurgarton Priory Church on 18th June when we celebrated becoming a legal benefice. (see report on page 10)

Organ Conference

The British Institute of Organ Studies held their annual conference in St Mary's on Saturday July 8th. Delegates came from far and wide including Exeter, Durham, Cambridge, Chichester and Birmingham. The meeting reviewed the history and archaeology of the John Marsh Organ, an instrument of great historic interest, thought lost but recently traced to our village church. The meeting also learnt something of John Marsh's life as an organist and composer. A short recital concluded the meeting. Much work has gone into overhauling and retuning the organ over the past weeks by Martin Renshaw, an expert in the field. It was apparent during the recital that his work had not been in vain! Our thanks go to Martin for his work and to the Institute for putting St Mary's firmly on the organ enthusiast's map.

Holidays

Revd Phil will be away during August but, thanks to our readers and retired clergy, services will take place much as usual. Phil will return for the Benefice service at Hoveringham on August 20th and can be contacted on his mobile in emergencies via Diana or Rachael.

Graham Hutchinson

Graham Hutchinson's funeral took place in St Mary's on Thursday 25th May followed by burial in our graveyard. Graham and Ilse were married in St Mary's more than 60 years ago and lived for many years in the cottage next to the village hall before moving to Mansfield. (see report on page 16)

Steve Dobson

Steve, who answered an advert in the village news several years ago, has reluctantly retired from cleaning the church because of problems with his shoulder. During this time he has paid frequent, often weekly, visits and we have relied on him to clean the church to a high standard and all this on a voluntary basis. He has coped with building

work, school activity days, lunches and open church weekends, all of which brought extra work and he has taken it all in his stride. We thank him for his loyalty and dedication, which has been wonderful gift to the church, and wish him well in the future.

Bleasby Church of England School

The end of year and school leavers' service took place on Friday 21st July in St Mary's Church. The children were encouraged to look back with thankfulness and to look forward with confidence to the next step in their school careers. On behalf of the West Trent Benefice, The Revd Phil presented each leaver with a book, "It's Your Move", produced by Scripture Union, and sent them on their way with a blessing. The book provides useful practical advice and supportive suggestions to ease the transfer to secondary school. There were a few tears (mostly parents') amid the excitement of the approaching celebrations and holidays. We wish the children happy holidays and look forward to working with most of them again in the autumn term. We appreciate and give thanks for the dedication and enthusiasm of the school staff at the end of what has been a very difficult year and hope that they enjoy a well-earned rest.

Diana Temperley and Rachael Andrew, Churchwardens

NEWS OF DIANA

Many of you will already know that Diana Temperley has been absent from St Mary's for several weeks following hip replacement surgery. We have all missed her presence and the music she provides week by week. During her extended absence her contribution to the life of the church has become even more evident than we thought we knew. I would like to wish Diana a formal and heartfelt "Get well soon", not a speedy recovery but a steady and complete one! It is clear from the many enquiries received from members of our congregation, other churches in the benefice and villagers, that others feel the same, and we are all getting fed up with the karaoke machine!

Rachael Andrew

CLEANER NEEDED FOR ST MARY'S CHURCH

The Church is in need of a new cleaner for:

- Approximately 4 hrs per month
- Flexible hours by arrangement

Interested? Please contact:-
Rachael Andrew 830296 or Diana Temperley 830314.

ST MARY'S REMARKABLE ORGAN

On Saturday 9th July members of BIOS, the British Institute of Organ Studies, came to Bleasby for a special day conference entitled "A most elegant and beautiful instrument – John Marsh's house organ 'rediscovered'".

Many in Bleasby have long known that the organ we have is very old, built in 1783, was much travelled and had been in the Marsh family since it was built, the Reverend John Marsh having recorded its history in his farewell address to parishioners given in 1874. But the organ experts did not know what had happened to it after its first owner, John Marsh, died in 1828. Not so many of us in Bleasby had realised that this John Marsh, the Revd Marsh's grandfather who had designed and owned our organ, was a celebrated 18th century composer, a musician, author and polymath, kept a regular and detailed journal, had family connections in Southwell and had actually played the Minster's organ when he visited the town (his journal records his low opinion of the Minster organist of the time).

The outcome of the BIOS conference was that our organ was declared unique and largely in its original state – "a remarkable survival". It is also the best documented organ in Britain and probably one of the best travelled having been moved seven times before settling in Bleasby Church. As one of the organ experts said "There are old organs and organs that move around a lot but there are very few that move around a lot and survive to be old!"

A book has now been written about the organ and its remarkable original owner.

Barbara Cast

PATRICK GEOFFREY BROOKES

Pat lived in Lowdham in his youth and worked in Lowdham Pharmacy, where his sister was the pharmacist, for most of his working life. He met Anne Warrener through a shared love of music and dancing. The Warreners kept the village Post Office and Shop and Pat would spend some Sunday evenings there with Anne enjoying each other's company and making music, Pat singing and Anne accompanying him on the piano. After they were married they moved into the cottage on Main Street. Their son Richard was born in 1967 and David in 1970. Both attended local schools before moving on to careers that took them away from Bleasby, Richard as a teacher and David on the railways. Pat's love of music continued throughout his life, particularly the big band sound. He was a member of the British Legion local branch and a keen supporter of Nottingham Forest Football Club. Pat continued to live in the cottage after Anne's death until moving into a nursing home in Gedling after an extended period of ill-health. Pat died on 3rd June 2017, a month after his 80th birthday. Having been a resident of Bleasby for many years he was a well-known local character. The cremation took place on 19th June at Gedling Crematorium and his ashes will be interred in Bleasby Churchyard where his wife Anne is buried. His family and many of his friends attended his funeral. Richard spoke of his father in affectionate terms,

bringing memories of the amusing episodes of his life and causing much laughter. All those who knew Pat will remember, above all, his sense of humour.

(Our thanks to Elaine France and others for memories of Pat)

Going away?

Why not leave your pets with us?

Valley Boarding Kennels & Cattery



Situated between Bleasby and Fiskerton in the heart of the countryside

**** Kennels and catteries with outside individual runs ****

Please visit to see our facilities

Gypsy Lane, Fiskerton | Telephone: 01636 830268

www.valley.talktalk.net

GOVERTON FARMS

There is more to learn about old farms in Goverton but thanks to John Glazebrook and to David Cooper we have some information about Goverton House and Mount Pleasant Farm.

Goverton House

The original part of this house, the family farmhouse, is of special architectural interest and dates back to the 17th century forming the central part of the existing much grander house. Some outbuildings also date from this time. There are later additions to both the house and outbuildings and plenty of evidence that farming was carried out here over several centuries. The outbuildings retain evidence of stabling for working heavy horses, pigsties, and barns arranged around a crew yard where cattle would probably have been overwintered. There are further stables and an ostler's house. The previous owners were the Woodsends who were builders, not farmers. Previous occupants at Goverton House from the 1880s, were the Hind family and,

prior to that, it was the Marriott family who were the likely owners according to an early 19th century map. Land across the road belonged to this farm, including extensive orchards and Goverton Cottage which had housed John Marriott Hind, the younger son of the Hind family who was a retired surgeon. Later it became the home of the gardener. There has been no farming from Goverton House in living memory although the attached land is used for cattle rearing. The evidence that heavy horses were kept here indicates that some land was used for crop growing. The original acreage of the property is not now known but it is likely that land would have changed hands over years and it may have extended towards the Thurgarton parish boundary.

Mount Pleasant Farm

This farm sits on the brow of the hill above Mount Pleasant Cottage, previously called Elm Cottage, the last but one house before the Thurgarton boundary – this was once the site of a brickyard and the cottage was probably associated with this.

The farm was farmed by the Farnsworth family from the 1880s, and David Cooper of the cottage is their descendent, his mother being Norah Farnsworth. His grandfather, Joseph Farnsworth, was a prolific and well-known photographer in the early 20th century as well as a farmer.

Previous tenants of Mount Pleasant Farm included the Hopewells in the 1950s whose son Alan kept cattle and whose main interest was calf breeding. From time to time there were lodgers at that time who worked on the land in various capacities. Sidney and Olive Alexander were tenants in the 1960s and they kept pigs and poultry, erecting a superb joint house for them. Sidney Alexander worked at Brackenhurst College in charge of animal husbandry, introducing new techniques in pig rearing. Following them there were the Wrights in the 1970s and it was during this tenancy that the farm deteriorated and was subsequently sold.

The original farm and barn are now two distinct residential properties, following sale and conversion in the late 20th century. Mount Pleasant Farm retained an agricultural link in that the former owners built up an animal foods business which is now accessed from the A612.

There are other farms in Goverton, Corner Farm and South Hill Farm and almost certainly a farm on the site of Goverton Grange as indicated by the long barn which follows the line of the road, now converted to a house, and the property now called Stable House. And what of the small barn across the road from Stable House with steps to a hay loft possibly, or a dovecote; the holes for the doves were evident until recently but are now obscured by ivy. There is much still to be unearthed. Please help with information if you can.

Rachael Andrew

GRAHAM HUTCHINSON – 2nd NOVEMBER 1927 to 7th MAY 2017

St Mary's was full of Graham and Ilse Hutchinson's friends to say farewell to Graham after his long and fulfilling life.

Graham was born into a family of Mansfield timber merchants and, tellingly, his mother was a domestic science teacher. He attended Queen Elizabeth Grammar School and, after completing his education there, his parents decided that he was well suited to a profession in catering. The basis of this view was that he treated his parents to an excellent cooked breakfast on Sunday mornings while they enjoyed a lie-in. His National Service was spent in the Catering Corps, providing the meals for the Officers' Mess, so he was obviously a talented cook. He later became a barman at the Flying Horse in Nottingham where he noticed a most attractive lady who tickled up the pub flowers and succeeded in tickling his fancy too – this was Ilse and they were married here in Bleasby in 1950. They then worked together at L'Aperitif in Nottingham where they met many well-known people such as Agatha Christie, Archie Andrews and Peter Brooks, Boris Karloff, Julie Andrews and Diana Dors.

Graham then became the Area Manager for the company which invented Babycham! Following that they ran greengrocers shops back in Mansfield and then moved to Skegby when son David was born.

In 1970 Ilse and Graham moved to Brookside in Bleasby – it was a handy residence as they were fully involved in the running of the village hall for many years. Here they created a wonderful garden and were involved in many things – Graham was a founder member of Southwell Lions. One of Graham's favourite activities was sailing and he was the founder of Sutton Sailing Club.

Seventeen years ago they moved back to Mansfield and Graham took up the hobby of restoring vintage Morris Minors!

The friends and family who spoke at the service described Graham as a doer and a motivator and delightful constant friend who left a legacy of achievement and community service. He and Ilse were married for 67 years. First and foremost, Graham was a devoted family man.

BLEASBY FOOTBALL TEAM



As of September, Bleasby will have its own football club for the first time ever! A group of lads from Bleasby, who previously have played for a team in Newark, have decided to take on this new venture and bring football a little closer to home. Alongside their spearhead Ryan Adshead, the group of Richard Hichens, Josh Miller, Dan Evans, Adam Flatt and Michael Harget have all got together and put an idea they had into reality.

Ryan Adshead has said “There is a group of us from Bleasby who have played football together from a young age, and we thought now would be the right time to represent our village. All 6 of us have contributed something towards the team. And now we are just looking forward to the start of the season in September.”

The new men’s team will play their football in the Newark Alliance Second Division. Playing teams mostly based in Newark, they are urging the Bleasby community to get behind the team and hope they can become a mainstay in the Newark football league for many years to come. The team, a lot of which are from the Southwell area, have already been training on Wednesday nights since mid-April in preparation for the campaign ahead.

Bleasby FC will play their home games at the Arthur Radford Sports Ground in Morton. Ryan is delighted that he has managed to secure a football pitch so local to the village; and the committee at the Morton playing facilities have been very supportive of the new team. The team have already invested in a new football kit and will sport a sky and navy-blue strip. Ryan and his team would like to give a huge thankyou to Riece Bellamy and Lee Miller who have made this possible by financially backing the club.

“Their investment is what has made this possible, without their support we would have no kit or equipment and the idea of having our own football team would still only be an idea” Ryan said.

Riece Bellamy’s company, Contract Furniture Group, is the football club’s official sponsor and will be displayed on the front of the kit. Riece has been very supportive of the idea and his generosity is much appreciated by the club.

For more information about the club, and for updates on their progress in the upcoming season, head over to the Bleasby FC Facebook page and to support the lads, please like and follow the page. They hope to gain the full support of the Bleasby community for the seasons to come.

Ryan Adshead

JUBILEE PONDS – “TWIXT AND BETWEEN”

It seems (so) sad to admit it but, by August, the summer season is drawing to a close, the days are shortening and the sun is now tracking a lower arc in the sky. Ironically August, the school summer holidays, historically existed not for summer seaside adventures but to enable the harvest to be taken in with the help of the whole village community – children included!

Nature tells a similar story of completion on the Ponds, having already reached its peak of activity and growth. In the wooded areas very few flowers can now be seen because spring flowering has to precede both the tree leaf growth and the attendant heavy shade. The odd red campion and herb robert will offer a sultry show in the less shaded areas and the odd orange berried spike of lords and ladies will catch the eye

but it's the evergreen ivy which dominates the ground flora where light now barely penetrates.

Even the meadow has long since passed its full glorious flush of wildflower array. The dog daisies are now fallen but their demise gives rise to the previously overshadowed yellow ladies bedstraw and birdsfoot trefoil whose lowly growth joins that of the fading clover flowers. The rather special great burnet (once a favourite flavour for 4-a-penny salad chews) takes its opportunity to overtop the now waste high and declining mass of vegetation beneath, as do the thistles whose magenta heads prove to be a magnet for bees and butterflies and vie in appeal with the lower growing and less fearsome knapweed.

On first impressions at this time of the year, the birds may seem to have abandoned the Ponds entirely. There is an eerie silence within the bushes and trees and an emptiness across the waters as the breeding season heads to its close. Only to be heard are the male blackcaps' "tit-for-tat" calls between each other from woodland edge and scrub and the late-clutch reedwarblers still stridently calling from the reedbed. But deep in the undergrowth waterfowl are skulking as they, and the overworked, feather-worn, resident songbirds, retire to regain their winter plumage. The female mallard, still mustering a well-grown family of young, may make a brief appearance and the single young of two couples of coot and of great crested grebe may leave a hint that there is a little time left yet to replenish their stock.

The majority of our summer visitors have now left or are about to leave before September has even dawned. Swifts, sand-martins and virtually all species of warbler are already moving towards warmer winter climes, with house martins and swallows to follow soon afterwards. A flotilla of a score of tufted ducks serve to remind us of the flocks of ducks from more northern latitudes that will be filling our emptied waters in a few months' time.

But look closer and marvel at the beauty of the dancing blue damselflies and the aerobatic flight of the darter, chaser and hawker dragonflies which are to be found at water margin edges and hunting across the collapsing meadowland and where butterflies still skip and flutter in search of the nectar rich thistles. See too the autumn fruits of walnut, sloe, blackberry and rosehip still obscured in green attire, the prelude to the autumn harvest and winter store.

Over paths, tracks and vistas nature's battle for dominance over our management efforts is illustrated amply by the overarching, head-catching, fresh, bright-green, spikey bramble stems which then root to tangle and trip the unwary! The spiny gorse, the stinging nettle and the clambering rose briars all bring their challenge, yet every one of them is critical for the wellbeing of a wealth of wildlife – insect, mammal and bird – and a challenge to our will and efforts to control.

Our voluntary working parties now endeavour to hold back nature's struggle to reclaim our paths, defying our efforts to bring order, organisation and ecological diversity to

the Ponds. Without their efforts the Ponds reserve would become impenetrable and eventually return to marsh and woodland as would be natural to this site. thank you band of stalwarts!

The real glory of August is that it allows time for our children to have freedom and opportunity to become aware – and immersed – in the natural world and to develop a fascination and interest that, over the years, becomes a love and a commitment to ensure a future for wildlife in the human battle to dominate the very thing that makes our existence even possible.

Peter Cast

BLEASBY PLAYGROUP



Thanks to all the lovely babies, toddlers, pre-schoolers, mum, dads, grannies, grandads and carers that attend, Bleasby Play Group is now celebrating its second year of being open!

Play Group is on every Monday morning, 9am - 11am (term-time) at Bleasby's lovely little village hall, and offers a wide range of activities and toys for children aged 0 - 5

Please do come along! All are welcome

Bleasby Play Group, Bleasby Village Hall, Mondays, 9am - 11am

£2 per family (which includes 2 hours of play, a craft activity, unlimited refreshments, and a healthy snack)

Jordanna Morris & Alison Collins

ANOTHER SNIPPET FROM JOHN HOLMES' DIARY

1817 – This summer Mr Abbott, who is the proprietor of a large farm in this parish, built a large kitchen and Brewhouse, with a large and commodious barn, stables and cowhouses in the High Horspools near to the hamlet of Gibsmere. Mr Kelham made some additions to the Hall this summer by building a butlers-pantry, sellar, dairy etc.

These are referring to the former Glebe Farm in Gibsmere (now called Horspool Retreat) and to Bleasby Hall. Spellings are John Holmes'.

Bleasby Diary of Events

Date	Time	Event	Location
Wednesday 26 th July		Summer school holidays start	
Saturday 5 th August	9.30am	Jubilee Ponds Working Party	JPs
Sunday 6 th August	10.30am	Service of Morning Praise for Everyone	St Mary's
Tuesday 15 th August	7.30pm	Meeting of Bleasby WI with Ian Morgan on "The Curious World of Old Time Punishments"	Village Hall
Thursday 24 th - Monday 28 th August		Southwell Music Festival	The Minster and other locations in Southwell
Sunday 13 th August	11am	Service of Holy Communion	St Mary's
Sunday 20 th August	9.30am	Jubilee Ponds Working Party	JPs
Sunday 20 th August	10.30am	Benefice Service of Holy Communion	St Michael's Hoveringham
Sunday 27 th August	10.30am	Service of Morning Praise for Everyone	St Mary's
Saturday 2 nd September	9.30am	Jubilee Ponds Working Party	JPs
Sunday 3 rd September	10.30am	Service of Morning Praise for Everyone	St Mary's
Wednesday 6 th September		School resumes	
Monday 11 th September	7.30pm	Meeting of Bleasby Parish Council	Village Hall
Sunday 17 th September	9.30am	Jubilee Ponds Working Party	JPs
Sunday 17 th September	10.30am	Benefice Service of Holy Communion	St Denis' Morton
Monday 18 th September		Deadline for the autumn edition of Bleasby News	
Tuesday 19 th September	7.30pm	Meeting of Bleasby WI with Elizabeth Bagguley on Writing for Children	Village Hall
Sunday 24 th September	9am	Service of Holy Communion	St Mary's

Tuesday 26 th September	7.30pm	Meeting of Bleasby Local History Society with Dr Richard Gaunt on the Pentrich Rising	Village Hall
Saturday 7 th October	9.30am	Jubilee Ponds Working Party	JPs
Sunday 8 th October	11am	Harvest Holy Communion and Bring and Share lunch	St Mary's

August Church Services in the West Trent Benefice

	Bleasby	Halloughton	Hoveringham	Morton	Rolleston	Thurgarton	Upton
Sunday 6 th	10.30am MPE		6pm EP	9am HC	10.30am MPE	10.30am MPE	10.30am HC
Tuesday 8 th							10am HC
Sunday 13 th	11am HC	6pm EP		10.30am MPE	10.30am MPE	10.30am HC	10.30am MPE
Thursday 15 th							4pm Zip Bam Boo
Sunday 20 th			10.30am Benefice Service of HC				
Sunday 27 th	10.30am MPE		10.30am MPE	10.30am HC	10.30am HC	10.30am with Methodists	10.30am MPE

September Church Services in the West Trent Benefice

	Bleasby	Halloughton	Hoveringham	Morton	Rolleston	Thurgarton	Upton
Sunday 3 rd	10.30am MPE		6pm EP	9am HC	10.30am MPE	10.30am MPE	10.30am HC
Sunday 10 th		6pm EP	9am HC	10.30am MPE	10.30am HC	10.30am HC	10.30am MPE
Tuesday 12 th							10am HC
Sunday 17 th				10.30am Benefice Service of HC			
Thursday 21 st							4pm Zip Bam Boo
Sunday 24 th	9am HC	6pm Harvest	10.30am MPE	10.30am MPE	10.30am MPE Harvest	10.30am with Methodists	10.30am MPE

HC = Holy Communion MPE = Morning Praise for Everyone
EP = Evening Prayer

JOHN THE POSTMAN

There is a rumour that our much appreciated postman, John, is approaching his twenty year stretch in Bleasby. John himself doesn't seem sure that he has reached his service score, but let's take the opportunity to mark the amazing number of years he has been postman, support and friend to the village! Congratulations and thanks John!

BLEASBY WOMEN'S INSTITUTE NEWS

Our June meeting welcomed Colin Deeley to speak on Gunby Hall which he did with his usual aplomb. In July, instead of a meeting, we enjoyed the annual barbecue and, thanks to the hospitality of Bob and Monica Richardson, we were pleased to be eating, drinking and chatting in their lakeside field – always a special occasion, particularly when the weather is kind. On August 15th we will return to the Village Hall for our meeting when we will hear from Ian Morgan on the “Curious World of Old Time Punishments” – an intriguing title! And in September it will be Elizabeth Baggaley telling us about writing for children.

Again members have been engaged in the round of enjoyable activities – the Book Group, Ladies to Lunch, visit to the National Memorial Arboretum (greatly appreciated), to Robin Hood Theatre and the WI quiz (we didn't win!).

We meet in the Village Hall on the 3rd Tuesday of each month at 7.30. Why not come along and give the WI a try.

Barbara Cast

BLEASBY SCHOOL FRIENDS ASSOCIATION

Bleasby School's Fundraising Committee have had yet another busy and productive year planning fundraisers and providing fun and exciting activities for the children (and grown-ups!) of Bleasby School.

Once again, the whole school community have worked together throughout the academic year to raise more vital funds for our friendly, thriving and happy school. On behalf of the BSFA Committee, we would like to thank everyone involved for their unwavering support and commitment over the past academic year. We hugely appreciate all of your time, help and support in our fundraising efforts.

This year, BSFA funding has helped Bleasby School to purchase:

Guided Reading Books

A large weather-proof storage shed for the playground

Soap dispensers for all bathrooms

Hand dryers

Electrical equipment for pupils

White Boards for pupils

2 Visualisers

Pantomime.....
and much more..!

We couldn't have done this without the support of the whole community; thank you all so much. With very best wishes
BSFA Committee

TELECOMMUNICATIONS MAST

There has been a new development following Newark & Sherwood District Council's premature granting of planning consent for a mobile mast in Sycamore Lane, without considering the views of concerned residents.

Following legal action taken by a group of residents of the village, Newark and Sherwood District Council have agreed to quash their proposed site on Sycamore Lane and return to the planning stage of the project. We are hopeful, if this is restarted, that they will engage with local residents to agree a more appropriate location. We are now in contact with Cornerstone Telecommunications Infrastructure Limited (a joint venture between O2 and Vodafone), in order to assist with the decision making process on a new site. We will ensure the village is informed of all updates. We all support the upgrading of our mobile signal coverage and the development of the 4G and 5G network and wish to work with the planners and developers to find the best site for the residents of Bleasby.

To get to this point has been a huge success arising from cohesive working by a group of residents with wider support from much of the village. From local residents in the vicinity of the Sycamore Lane site and other concerned people, we extend our sincerest thanks to all those who supported this initiative.

If you would like to support the ongoing work in any way, please contact either Liam Barbary at liambarbary@hotmail.com or Arwel Griffiths at arwel_griffiths@hotmail.com, mobile no 07786 171133.

CONGRATULATIONS TO OUR SCHOOL

SIAMS (Statutory Inspection of Anglican and Methodist Schools) Report

Bleasby Church of England School was inspected on June 22nd 2017 - the main findings are outlined below:-

- This is a caring church school community rooted in Christian values where relationships are excellent such that all are nurtured and enabled to achieve their full potential as children of God.

- There is a close partnership with the local church which has enabled school leaders to root the life and work of the school more securely within the Christian tradition.
- A highly committed staff team working effectively together exemplify the school's Christian values thus maintaining the wellbeing of staff and children whilst ensuring that the children's learning has not been disrupted during recent times of considerable staff changes.

Areas for improvement include:-

- Close monitoring of church school distinctiveness.
- Opportunities for children to plan, lead and evaluate collective worship.
- Integrate the new diocesan *Understanding Christianity* resource within the religious education curriculum.

BLEASBY LOCAL HISTORY SOCIETY

We enjoyed the talk on 27th June about Bromley House Library's 200 year history by Geraldine Gray, Assistant Librarian at the library. In July we found that Moor Ponds Wood in Papplewick was well worth a visit – a most intriguing and interesting historic site. And now our next event is a talk by Dr Richard Gaunt on the Pentrich Rising, the centenary of which fell in June this year. As those attending will hear, this was when over 300 men from the Derbyshire and Nottinghamshire border villages, motivated by poverty and the hunger of their families set out to march to Nottingham with the aim of bringing down an unjust and oppressive government – this was a significant happening for our county and this is an opportunity to learn more – 26th September is the date.

You are most welcome to attend our talks – members free and £2.50 for visitors. Talks start at 7.30pm in the Village Hall.

Barbara Cast - President of Bleasby Local History Society



JUBILEE PONDS MANAGEMENT COMMITTEE

Thank you to all who returned the recent Jubilee Ponds questionnaire. Your comments and suggestions were very helpful to us.

It is intended to produce a pamphlet in conjunction with the Parish Council and this will be delivered through your door later in the year and will give more information about the Ponds and hopefully answer some of your questions and queries.

The Jubilee Ponds Management Group minutes are now published on the Parish Council Community Website along with the list of Group members for your information.

Elaine France, Chairman, Jubilee Ponds Management Committee

ZUMBA

Bleasby School, Station Road

Wednesday evenings

6.00 pm

All welcome (over 14's)

£4.00 per class

Tel - 07837 810487 with queries

Zumba



HYDEBARKER
WORLDWIDE TRAVEL & ADVENTURE

100% TRAVEL SPECIALIST

Affordable luxury

Escorted touring

Tel: 01636 816 262
www.hbtravel.co.uk | 1 King Street, Southwell

ABTA
ATA

NEIGHBOURHOOD NEWS – PUTTING MINDS AT REST

Our recent meeting of parish representatives from many of the local villages and the exchange of information with our assigned PCSO Keith Crowhurst brought the news that serious crime proved not to be a problem over the local area and Keith gave pointers as to how to maintain this fairly happy situation. There was one reported vehicle theft in the area – that of a campervan – stolen by taking its keys from a predictable hiding place. After locking your vehicle, keep your keys with you at all times and, when returning home, conceal them in the most unlikely place imaginable!

Garden features are always potentially at risk from the casual or opportunist thief and, in our parish, one very special and significant garden ornament was taken recently, apparently quite brazenly! Several weeks back, a full planter with floral display was similarly taken from Goverton. This is a great disappointment but it would be a tragedy if it were to discourage us and allow such reprobates to spoil the look of our gardens as well as that of the combined parish effect such thoughtful displays provide.

Inconsiderate parking has been reported by a raft of local parishes, schools and shops being the most critical of locations. Here in Bleasby, parking illegally within the double white lines on both sides of the level crossing (which are soon to be extended back to their original length) has been noted by locals and police alike and ties in with

camera records of vehicles entering the hatched areas over - and before – the level crossing without there being a clear exit. The Transport Police will issue infringement tickets to anyone breaking this rule.

Recently our vigilant defibrillator kiosk volunteer supervisor, Ali Sutherland, discovered that the defibrillator box had been opened and some of the contents taken out without being returned to the box. This could not have been done without being given the opening code by the emergency services – presumably by using the phone in the kiosk. We are concerned about this incident on several fronts – if you know of anyone who experienced difficulty in genuinely trying to seek assistance, please let Peter Cast or Ali Sutherland know.

And, on a final very positive note, we are glad to report that the individual who approached a pupil on her way to school a short while ago has been apprehended by the police.

Take care - and help keep your fellow parishioners and their homes safe please!

Derek Whitman and Peter Cast

Summer Rain

The rain is beautiful,
The August rain,
Bathing the tired land with its cool waters,
Washing away the heat and
Smoothing scars in the parched and riven earth.

Now the birds will come out from the
Shadows of the drooping leaves
And wade their thin feet
Like twigs stirring the gathered pools.

Now the faded flowers can show their
Colours to the watery sun
And all is fresh, revived and new,
In this most welcome summer rain.

BJRC

Ben Morgan

Painting & Decorating Services



T: 01636 831333

M: 07775 888851

E: ben@morganpainting.co.uk

Domestic

"We have used four different decorators over the last few years and every time, there has been a problem and the job has not been carried out to a satisfactory result. Ben was recommended to us and the job he did was fantastic and as we wanted. He is very professional in both his work and his personality. He offers very competitive rates and I would definitely use again and highly recommend."

Nicola & Nigel Bennett, Goverton

Rented

Office

Insurance

"Ben has just completed our kitchen extension and done a fantastic job, I would highly recommend his services. He is highly skilled and professional with in depth knowledge of paint and products, ensuring our walls are wipeable and the paint will not fade. We feel this is money well spent as our decoration will stand the test of time in a heavily used kitchen."

Janine and Chris Ford, Southwell



BenMorganPainting&Decorating

WISDOM OF THE MOUNTAINS – BUDDHISM OF TIBET AND THE HIMALAYA

Over the last fifteen years I have travelled widely in Tibet and the Himalaya and found myself increasingly intrigued by the ritual and art of Tibetan Buddhism. Unfortunately, the level of knowledge imparted by local guides was always superficial and attempting to converse with local monks was always problematic due to the language barrier.

Returning to the UK, personal research quickly established that most texts were either very academic or had an overtly liturgical style. I am not a practising Buddhist, but found the whole subject such an intellectual challenge that I devoted recent years to understanding the subject more deeply, with further visits to various Himalayan countries, even spending a week in a monastery in Spiti, a very remote area of northern India. My last visit was to Tibet in 2015, the journey taking me through Nepal in the immediate aftermath of the huge earthquake that devastated the region.

Having gathered so much material, I felt it was time to write a book myself. It's been a great retirement project, one for the winter months when mountain walking and cycling had to take a back-burner. The book, *Wisdom of the Mountains – Buddhism of Tibet and the Himalaya*, was published in June.

Some of you may recall the visit to Nottingham in 2008 of the Dalai Lama. His public audiences attract thousands, many just curious to meet this gentle monk who states that 'his religion is kindness.' Tibetan Buddhism, with which he is usually associated, seems to have captured the imagination of many people. However, Buddhism has a complex history and can be a difficult subject for the general reader. My book explains the evolution of Buddhism practised in Tibet and the Himalayan regions of India, Nepal and Bhutan. It focuses on institutions, ritual and practice, and introduces the reader to the rich art and iconography of the tradition. Now that mindfulness, yoga, meditation and concern for mental well-being has become topical in the West, I hope the book will provide a useful introduction and a fresh approach.

The 640 pages are packed with over 300 colour pictures, illustrations and maps, and written in a style to suit the general reader and travellers to the region. The book is available online at himalayabuddhism.com and through all good booksellers, priced £25 for soft cover and £40 for the hard back.

I am offering a £10 discount on the hardback edition for local people (collection from Bleasby only). Please contact me directly at colin.stump@btinternet.com or 07980 211531 if you are interested.

Colin Stump

FLOOD ACTION GROUP

This risk of the flooding of our homes from both the River Trent and torrential and prolonged downpours is not insignificant and many of us have experienced the consequences and disruption caused by such occurrences. The Environment Agency and the Met Office work hard nationally to map, record, predict and advise so that we are better prepared for such incidents.

Being in the valley of the Trent means that any significant rise in river levels will also raise the vulnerability of some of our properties. If there is heavy rainfall in the Trent's catchment area, particularly when it is continuous over the Pennines – Derbyshire especially – then the levels of the river will also rise a day or two afterwards as the volume of water makes its way towards the North Sea via the Trent Valley.

Our parish is not entirely flat of course, even though much of it seems so. Our Saxon forebears wisely chose the slightly higher rises in land to build their settlement. Gibsmere, the area around the church and, of course, hillside Goverton are obvious example of where previous inhabitants chose to build and each became a mini-settlement or hamlet in its own right. Another hamlet, known as Notown and still acknowledged by one house's name, evolved on an 'island' of slightly raised ground in the midst of a less hospitable area of marshland between Lower Goverton and the old and original settlement of Bleasby. The raised road through the middle of the more modern part of Bleasby from the railway to about Shale Lane, and which is still apparent, was historically called the Causeway or Causey, and is testament to the need to keep the highway out of what could be a watery area from time to time. Today we are becoming more aware of the need to take care where developments happen and that certain areas are critically precious for their ability to hold water which might otherwise cause problems elsewhere.

The Trent Valley Inland Drainage Board is responsible for ensuring that our encircling and historical drainage system is maintained and so, to this end, as part of their regular maintenance programme but also as a specific improvement project, Holme Dyke, which serves to drain our western flank, is to be targeted for major improvement this winter. This will affect a number of landowners and might initially have a dramatic impact on features in the landscape. Such necessary management is in all our interests and helps mitigate flood risks.

Be assured that the Flood Action Group keeps a wary eye out for all kinds of possible flood risks. Please let us know of any concerns.

Bleasby Flood Action Group

BOOKING THE VILLAGE HALL

Our Village Hall is suitable for all kinds of events. Coffee mornings, meetings, family parties, lectures, classes etc all take place in our well-appointed and attractive hall.

The hall is equipped with plenty of modern tables and chairs plus lots of crockery and cutlery.

The cutlery, crockery (including loads of mugs), wine and champagne glasses and equipment including electric and thermos tea urns can also be hired separately to the hall and there are also about forty plastic chairs and some tables for hire which can be used out of doors.

The hall costs £8 per hour to hire, fully inclusive - for parties we ask for a deposit. Information on how to book and for hire rates for equipment contact Vivienne Mayfield, on 830929 or email vivmayfield@aol.com.

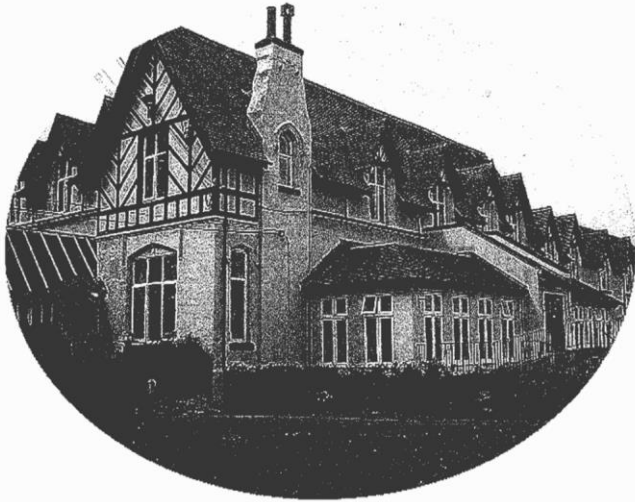
BAT OUT OF BLEASBY

It was a cool morning on 16th July when we noticed a small furry creature on our patio: we were unsure what it was but it quickly disappeared into the hedge. Later in the day it reappeared scuttling down the path on the other side of our garden with a large blackbird close behind trying to attack. On closer inspection the small furry creature was in fact a bat! Knowing these are a protected species and that it was certainly in trouble we rescued it and carefully placed it in a small cardboard box and called for help. The RSPCA gave us the number for the Bat Conservation Trust which were very helpful. Natasha advised us not to handle the bat but keep it safe in a ventilated box with a soft cloth and give it some water in an old milk bottle top until they could get one of their volunteers to collect it. The little critter was obviously quite happy with the water and dived straight in! Apparently, they can get dehydrated quickly and are not usually seen during daylight hours....

Nick, our local volunteer from the Trust called and was with us shortly afterwards. He examined the bat carefully and it appeared to have an injury to its left wing and had a number of mites that bats normally remove themselves. This was the most likely cause of its unusual visit to our garden. Although Nick was unsure if it would survive he promised to take good care of him (gender now identified) and remove the mites and treat its injuries. We have yet to hear how he is getting on, but we are hoping he'll make it. We were really grateful to the Bat Conservation Trust and especially to Nick who also provided us with some interesting information about these wonderful little creatures. Further information on their work and activities can be found on their website: www.bats.org.uk

Our bat turned out to be a Common pipistrelle (*Pipistrellus pipistrellus*), which are apparently the most common of the 17 species of British bats, and the smallest. They vary in colour from pale brown to almost black, but usually they have red-brown fur. They have small dog-like faces with a broad flat head and short, broad ears. They have fairly narrow wings and a short tail.

John and Carolyn Murden



Hazelford

The Provider of Quality Care

Our home is situated in a beautiful location with open views of the river and surrounding countryside. With lovely gardens and an abundance of wildlife, this makes Hazelford a delightful location for our residents, to some of whom we offer a short break; for others we become their home.

We pride ourselves in offering a home from home environment with an excellent ethos whereby our residents are involved in the decisions we take. We focus on our residents' aspirations, ideas, views and suggestions.

We have a person centred approach to the care of the residents: this approach is vital to ensure the best possible outcome and wellbeing.

Dementia care is a specialist area: we ensure with sensitivity that the resident is supported continually with person centred care planning, reinforcing daily the aspects of their lives they enjoy to ensure wellbeing and pleasures on a daily basis as, sadly, the previous day may be forgotten.

Our aim is to offer stimulating activities, with one to one time for those who may have dementia: we specialise in this area and our approaches create a relaxed harmonious environment for all.

Our bedrooms are large with views over the countryside and offer a choice of colour and furnishings, personalising them to suit our residents' preferences and choice.

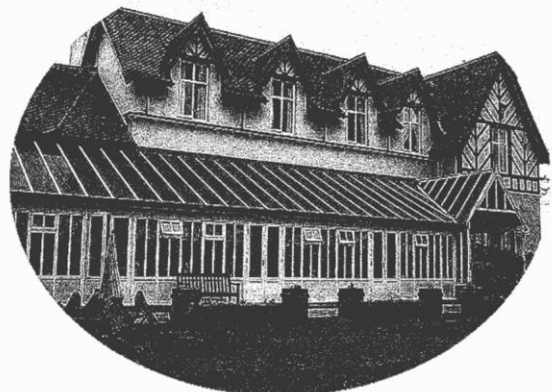
Please feel able to visit our home at any time – a warm welcome awaits you. We encourage families to also have an input into the plans the home may make. We hold family and friends of the home evenings.

With spring and summer comes along a plan of social events: for the summer an annual garden party, summer fair and schedule of outings to various venues.

HAZELFORD

**Boat Lane
Bleasby
Nottingham
NG14 7FT**

Tel: 01636 830207



The End of the Rookery

They have felled the old elms where the rooks used to cry,
and the sky
is empty. No more the spread fan
of topmost branches to span
with nests, the winter's light;
silence and emptiness now where such purposeful flight
rowed through the air to and fro
all the days, always somewhere to go,
except when they gathered for night
or to talk of domestic chores,
or some inter-nest plight
with a loud variation of caws!
Ah, black rooks, now that you've gone
the skyline is empty, the hillside is dumb.

Katharine Morris



ROB BROWN LTD PLUMBING AND HEATING

MOBILE 07973890499

NOW BASED IN BILSTHORPE

email robinb9@gmail.com
more than 20 years experience

INSTALLATION SERVICE & REPAIRS
OF DOMESTIC GAS APPLIANCES &
HEATING & HOT WATER SYSTEMS

ALL PLUMBING WORK UNDERTAKEN
SMALL BUILDING WORKS
AND PROPERTY REPAIRS
ELECTRICAL REPAIRS

DO YOU RENT PROPERTY?
WE DO LANDLORD,S GAS CERTIFICATES
MAINS PRESSURE HOT WATER
Fully insured /no call out fee



NOW OPEN



THE RAILWAY, LOWDHAM

We are a great family friendly village pub, offering creative fresh dishes, real ales, craft lagers, exclusive wines and the warmest of welcomes.

Please come and visit us for breakfast, lunch, dinner or just a simple drink in our cosy bar. We also have a fabulous garden and outdoor dining terrace ready for when the sun shines!

Book now at www.railwaylowdham.co.uk or telephone 0115 9663222
Look out on our facebook page for special events and menus.



THE RAILWAY | STATION RD | LOWDHAM | NG14 7DU

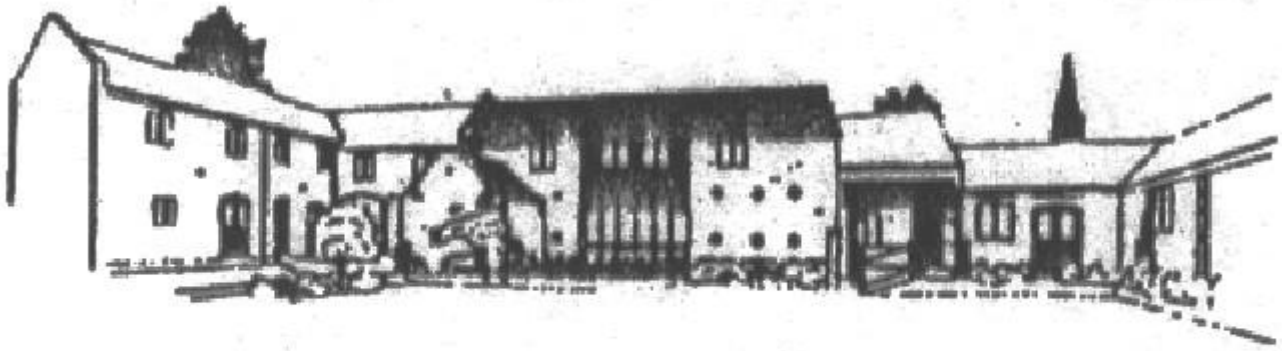
USE IT OR LOSE IT!

Lowdham to Southwell bus timetable – Tuesdays and Thursdays				
Lowdham Main St near Medical Centre		1010	1220	1345
Lowdham Main St near the Magna Carta		1013	1223	1348
Lowdham Station Rd near the station		1014	1224	1349
Caythorpe Main St	0906	1017	1227	request
Hoveringham Main St/Boat Ln junction	0910	1021	1231	request
Thurgarton Bleasby Rd	0917	1028	1238	request
Bleasby Main St	0921	1032	1242	request
Fiskerton Main St near Post Office	0926	1037	1247	request
Morton Main St	0929	1040	1250	request
Southwell Church St by Minster	0933	1044	1254	
Southwell Ropewalk by Medical Centre	0935	1046	1256	

Where marked “request” the bus will stop for setting down only

Southwell to Lowdham bus timetable - Tuesdays and Thursdays			
Southwell Ropewalk by Medical Centre		1135	1300
Southwell Church St by Minster		1139	1304
Morton Main St		1144	1309
Fiskerton Main St near Post Office		1147	1312
Bleasby Main St		1153	1318
Thurgarton Bleasby Rd		1156	1321
Hoveringham Main St/Boat Ln junction	0953	1203	1328
Caythorpe Main St	0957	1207	1332
Lowdham Station Rd near the station	1001	1211	1336
Lowdham Main St near the Magna Carta	1003	1213	1338
Lowdham Main St near Medical Centre	1006	1216	1341

Whilst every effort is made to ensure accuracy, the editorial team cannot accept responsibility for errors or omissions in articles appearing in Bleasby News. The views expressed in Bleasby News are not necessarily those of the Editors nor of Bleasby Parish Council. Bleasby News is distributed by local volunteers to whom we remain very grateful. Printed by Toot Hill School Reprographics.



THE BYARS

A small, family owned and managed, independent Care
Home situated amidst the rural landscape of the Trent
Valley

The highest quality care in the highest quality
accommodation

Our home offers long and short term care for the elderly

Viewing welcomed. Further details on request

THE BYARS

· CAYTHORPE · NR. LOWDHAM ·
NOTTINGHAMSHIRE · NG14 7EB

REGISTERED NURSING HOME

Tel: 0115 9663981



Weekly Events at The Waggon

Sunday Lunch

12.30pm to 4.00pm

(Booking highly recommended)

...

Takeaway Wednesday

Pizza, Fish/Scampi & Chips, Steak Pie

Served from 5.00pm to 8.30pm

(Normal menu also available)

Food Available

Wed 12:30pm until Sunday 4.00pm

QUIZ NIGHT every Sunday at 8.30pm

NEW FOR THE SUMMER

Wednesday & Thursday Lunchtime

2 courses for £10.00

To reserve a table call 01636 830283

THE BOOK ABOUT OUR ORGAN! (AND ITS OWNER)

JOHN MARSH
*A Most Elegant
&
Beautiful Instrument*
THE ORGAN



MARTIN RENSHAW



The Waggon today - see page 38 for menus, events and contacts for our friendly pub, the Waggon and Horses



The Waggon and Horses early 19th century