

# **BLEASBY NEWS**



**THE LOCK KEEPER'S COTTAGE ON THE NABBS**

**DECEMBER 2016**



# CHRISTMAS CAROLS

GLEBE FIELD

SATURDAY 10<sup>TH</sup> DEC

6PM

SALVATION ARMY BRASS BAND

BLEASBY SCHOOL CHOIR

REFRESHMENTS AT THE WAGGON

HOSTED BY

ST MARY'S CHURCH

& BLEASBY PARISH COUNCIL



## **Welcome to the December and Christmas Issue of Bleasby News**

The colours we have enjoyed in our trees this autumn have been spectacular – especially the humble Field Maple which we saw glowing from our hedgerows throughout the parish. But now the leaves are just about all gone, having lain in beautiful heaps and drifts on our gardens and paths – and now hopefully making useful leaf mould to further enrich our gardens in time for Bleasby Open Gardens on June 11<sup>th</sup> 2017!

The Christmas season is upon us (and commercially has been since at least October!) Now is the time for friends and families – and, of course, our Bleasby community. In December we have the School Fair on 4<sup>th</sup>, the Parish Council and St Mary's celebration of the start of Christmas – starring the Salvation Army Band and lots of carol singing – on 10<sup>th</sup> on the Glebe Field, the Trent Choir Carol Concert at Rolleston Church on 11<sup>th</sup>, along with our special services at St Mary's – the Crib Service is especially popular with standing room only!

A reminder about the importance of using the Tuesday and Thursday bus service – make a date to meet with your friends on the bus and enjoy one of the super cafes for a morning catch-up or look around the Christmassy shops for some lovely and interesting presents! The Minster will look beautiful in its Christmas clothes too.

We always look forward to receiving your articles, views, ideas, poems etc so please send plenty for the winter/February edition to:- Rachael Andrew, Sutton House, [pran@suttonhs.fsworld.co.uk](mailto:pran@suttonhs.fsworld.co.uk) or Barbara Cast, Little Dower House, [barbaracast@btinternet.com](mailto:barbaracast@btinternet.com) by 16<sup>th</sup> January.

*Your Editors, Barbara and Rachael*

## **PARISH COUNCIL NEWS – WORKING TOGETHER**

Much of the Council's time and focus during recent months has been the encouragement and support of our Parish Plan Steering Group; this is made up of a dozen members of the village community who have volunteered to meet on a regular basis and are working to replace our last complete Parish Plan (constructed in 2005) and to produce a village-driven document which will form the basis for the future management and development of the parish as well as a clear course of continuity and direction for successive Parish Councils over the years to come.

Currently the group has been subdivided and each mini-group is focussing on particular aspects of village life and offering both information and potential lines of enquiry to be incorporated into an informative questionnaire which will be circulated to every household in the new year.

The plan will, of course, significantly include aspects which have also recently exercised the minds of parish councillors and residents alike and, with local feedback, experience and ideas being provided through the Parish Plan enquiries, such Council deliberation will be better informed and should carry the support of the village and follow the aspiration of all for an even Better Bleasby.

The Council continues its commitment to try to involve all organisations, groups and interests in a cohesive approach to all parish matters and strategies and, to that end, we are pleased to report that the church, the school, the Waggon and Horses and the Council will all be working together on our next Glebe Field village venture this Christmas when the Salvation Army will be leading the carol singing around the Christmas Tree, the pub providing Christmas fare, and safe “t-light” holding children will be singing us all into the real Christmas spirit.

Upper School children at Bleasby are currently studying the Second World War and are really involved in the history of our village at that time. The aircrew memorial group under the inspired leadership of Ken Ogilvie will obviously be able to highlight the impact – sometimes a literal impact – of the Syerston airbase on life in the village at that time (the runway terminations of which are as near to our church, as the Lancaster flies, as Goverton is!). It is hoped that parishioners who lived in the village at that time will be willing to tell their stories of wartime experiences at the village hall on the afternoon of Friday, 2<sup>nd</sup> December. This will follow the children walking as evacuees from the railway station to the village hall for “allocation” to various homes of the time, stopping at significant contemporary buildings and places on their way there. Please don’t wait to for an invitation - you will be very welcome just to be there!

The telephone kiosk must surely have been there during the war. Could anyone confirm that, as it should feature large in our evacuee experience? No buttons A and B to press now but still a code to “dial” for access to the defibrillator which Ali Sutherland and Jenny Sterland have taken particular responsibility for and, to this end, familiarisation, training and refresher sessions have been organised for all people of the parish on December 5<sup>th</sup>. Please do try to attend and, please, if you have the time and consequent confidence, consider adding your name to a VETs contact system, being funded by the Parish Council, which will allow up to ten people to be simultaneously informed that help is needed somewhere in Bleasby.

The Council continues to monitor both the functioning of our new level crossing and the operation of our new FREE bus service to Southwell and is in discussion with both service operators over a number of teething issues which we are jointly progressively resolving. Please do try to use bus and rail services as much as possible – especially the bus service which now only has seven months to run unless it is sufficiently and widely used. A number of individuals are doing their best to use the bus regularly but wider usage is needed. The WI are hoping to encourage regular ‘jaunts’ to Southwell where members can take a convivial beverage together and, with Christmas close on

our heels, it would be good for us and businesses in Southwell if we were all to do that little bit of special shopping while waiting for the return bus trip!

Season's Greetings to you all from the Parish Council.

*Peter Cast, Chair, on behalf of the Parish Council*

## **FROM THE REVD PHIL**

*'There's a crack in everything, that's how the light gets in'* Leonard Cohen.

This week on the radio a father talked about how his son had died at the Bataclan in Paris last November, leaving a wife and young child. It was deeply moving. Terrorists under the guise of religion, achieving what!?

Is it me? my age or my background or something?.... but are there more reasons to be dismayed and perplexed in the last 12 months than is usual? Isis, Syria, Brexit, judges portrayed as the enemies of the people, Trump....and on a list of the 10 worst things, number 6 was the killing of Harambe the Gorilla in Cincinnati Zoo? Really, number 6!? And Leonard Cohen died!

But I've decided not to give in to dismay. There are plenty of amazing things and people and places. There are many good things we can do and contribute towards. What we need is *'good will towards all people'* and *'good news of great joy'*. For me the Christian message is right on the spot. Which is what you'd expect me to say, but actually I believe it is true whether I say it or not. We need more of it. The father's pain at his son's death revealed a humanity and an uncommon grace. Somehow the light can still shine through the cracks.

How can we do that ourselves?

*The Revd Phil*

## **LEARN TO SAVE LIVES**

Defibrillator training is back by popular demand!

There is an opportunity to come and refresh your resuscitation skills and learn how to use the defibrillator stored in our red phone box.

Monday, December 5<sup>th</sup>, 7pm, 8pm, 9pm at the Waggon and Horses.

No booking required. Just come along on the night. If you have any questions or can't make that night and want to arrange an alternative date please give me a ring.

Alison Sutherland 831026

# **LAKE DISTRICT HOLIDAY COTTAGE**

Borrowdale Road, Keswick

3 Bedrooms | Sleeps 6

**TO LET**

Fully refurbished holiday cottage with gas central heating,  
open fire place and private parking

Views overlooking the fells, front and rear gardens,  
superb location

For further details please ring  
**01636 830209 | 07812 101303**

**A. Rickett & Son,  
Bleasby  
Builder & Contractor  
Tel: 01636 830468**

## **BLITZ**

The siren shouts out to London to take cover.

Lost souls say goodbye to a place they used to call home.

Planes roar overhead and eager bombs begin their descent.

The sleepy streets awakened by the never ending Blitz.

Anderson Shelters bravely cling on; half buried too.

The rabble of London crowds; the dark grey streets.

Terror rains down on the frightened below.

Gas masks begging people to put them on.

Children say goodbye to people who know their every thought.

Day ends, night begins...eternal night

Everything is silent. The bombs come!

Bricks lay in a pile of despair.

By Sophie Rees (11)

Year 6, Bleasby School

*(A thoughtful example of the poems written by pupils at the school as part of their work on World War II) Eds*



A WWII Lancaster which ditched in the Trent

## **WELCOME**

Welcome to Chris and Harriet who have moved into the Cottages, Goverton, and to Martin and Yvonne Newbury to Boat Lane.

Please let us know of any other new arrivals in our village.

## **BLEASBY WI NEWS**

In addition to all the usual activities there were several outstanding events that took place in October and November. In early October, on a beautiful late summer day, 40 or so members from various local WIs met at our village hall for a "Welcome Walk". We set off at 10.30 and walked the footpaths to Shale Lane, and on to the Brackenhurst Estate boundary via Gorsey Lane, Morton. We stopped at various points to admire views and to learn from Barbara Cast's rich store of local history. We took a short break to admire the pond at Brackenhurst but the local wildlife must have heard our approach as there wasn't much to see on this occasion. Having reached the highest point near Rudsey Farm we dropped down the hill using the wide verge which had been cut especially for us by our efficient lengthsman, Richard Covill. On our return to the village hall we were greeted by Christine Andrews and her team of cooks and treated to a two-course hot lunch and coffee - very welcome after 5 miles on foot. The hall looked wonderful with new table cloths, and table decorations by Vivienne Mayfield. As a result of the generosity of those members who provided the food, we were able to send £200 to the Denman Appeal to support the maintenance of the national residential training centre. Thanks are due to all those members and friends who made this such a success and resulted in an enthusiastic response from members and visitors.

The following week members broke with the long-standing tradition of a lunch out together on a Monday, instead meeting at The Cauntton Beck for breakfast. This was no early morning event but an enjoyable 11 o'clock affair.

Our birthday party took place at Biondis on the Trent lock at Gunthorpe where 40 or so members enjoyed good food and conversation while the heavens opened outside. In spite of the fact that the rain caused all the car park lights to fuse, not a single member was lost in the Trent whilst trying to locate their car in total darkness.

One of our own members, Carol Dewhurst, using her extensive local Lancashire knowledge, gave a fascinating talk on the "Witches of Pendle" at our November meeting. It would appear that any woman in the 1600s with an interest in herbs and remedies might find herself convicted of witchcraft and hung for her "crimes". The eight members who appeared as witches at the meeting might well have been looking over their shoulders as they made their way home although if they had been apprehended by the long arm of the law (unlikely when bobbies on the beat are as scarce as hens' teeth), it would more likely have resulted in an ASBO.

Wrapped Christmas Gifts this year will be given to the Women's Refuge in Newark. Other basic items of toiletries, for the refuge, may be put in a box at the December (Christmas Party) meeting.

Rachael Andrew



## **ALL THAT GLITTERS ISN'T JUST GOLD – AND ALL THAT GLITTERS OTHERS LIKE TO HOLD**

During recent weeks there have been a number of break-ins in the villages around Southwell and it seems that there is a pattern of opportunist burglaries happening during the day (often afternoons) when homes are empty and where jewellery is quickly accessible in ground-floor rooms.

Regretfully, Bleasby has not been immune to this trend and unfortunately jewellery was stolen from one of our houses in a similar way at the beginning of November. Because of its potentially high value – and because it can be easily concealed – jewellery has obviously become a target of choice, allowing the offender to walk innocently from the scene of the crime without the need of nearby transport or even any kind of baggage.

You might be wise to avoid having small valuables on view or in drawers and boxes that might be expected to store such things. Items that have high sentimental value – as well as a monetary value – should take precedence and the greatest care taken to avoid the loss of a treasured possession.

Peter Cast and Derek Whitman

Safer Neighbourhood Group

### **JIM KELSEY**

It was with great sadness that we learned of the sudden death on 5<sup>th</sup> November of Jim Kelsey of Oak Tree Close.

Jim was a well-known figure in Bleasby, especially when he was accompanied by the cluster of dachshunds.

He had many interests and we hope to include more about those and his life in the next edition. Notably in Bleasby, he was the Chairman of Bleasby Local History Society, a role which he fulfilled admirably and ably - a great loss to the society.

His genial personality made him popular with those who knew him and he will be greatly missed. Our sympathies are with Gillian and his family.



## **POPPIES PLUS!**

A little bird has told us that Christine Brill has been involved with the Remembrance Poppies and the British Legion's work for fifty years. It's an impressive achievement and one to be celebrated. Our congratulations to Christine.

## **A SUCCESSFUL RNLI COFFEE MORNING!**

Many, many thanks to everyone who supported the coffee morning in aid of the Royal National Lifeboat Institute held last month. I am delighted to say that we raised £405 and that our souvenir secretary had sales of £242.

Your generosity will help to ensure that lifeboats have fuel and are ready when the calls come - all the money raised will be helping to save lives at sea. Last year volunteers launched 8,228 times around the coast of the UK and Ireland, rescuing an average of twenty two people a day.

Thanks again

Ann Buckley and her crew!



## **BLEASBY LOCAL HISTORY SOCIETY**

A sad time for us in the BLHS but we know that Jim would wish us to carry on with our programme. Our thoughts were with his family at our meeting on November 22<sup>nd</sup>. The talk was entitled "One Thousand Years of Mining" and was given by a veteran miner, Bob Bradley. Our next talk is on February and is to be given by Ken Ogilvie – "Who lived in my house in 1901?"

All are welcome at our talks – members free and £2.50 for visitors.

Barbara Cast - President of Bleasby Local History Society



Helping Bleasby School  
move Forward



A new shed (above) and Soap Dispensers (bottom):

### Update on Wish List...

Thanks to your continued support, the BSFA have now purchased the hand dryers and soap dispensers requested by the children. These have been installed and the children love them!

We have also purchased a new shed to house PE equipment and the ride on toys for Apple Class.

We have recently received requests for science equipment for our KS2 pupils and white boards for our KS1 pupils as well as art materials for all of the pupils which we are in the process of buying.

The BSFA will also be supporting the Anti-bullying campaign again this year as well as the forthcoming Christmas events in school.

Do you have any unwanted board games or good condition reading books you want to rehome? Donations of both will be gratefully received by the school to help provide rainy day activities.



### A Special Thank You...

Goes out to Annie Cast-Coombs (6) who raised £5.32 through the sale of her homegrown runner beans which she very kindly donated to the BSFA.

Also to Louise and Glen Staniforth for providing the children with a new 'Buddy Bench' for the playground. Thank you to you all ☺

### Other Ways To Get Involved...

Join us on 4<sup>th</sup> December 11.00am – 2.00pm for our Christmas Fair, sponsored by Taylor Motoring Group. Festive fun for everyone.

Remember to register with Easyfundraising for your Christmas presents and raise money for the school whilst shopping!



### **Fill the Bin Friday is back!**



We are looking to encourage the wider community to use the clothing recycling bin that's located at the bottom of the drive to School. The items accepted include clothing, towels, bedding, blankets, cushions and pet bed covers.

**All items should be bagged.**

Don't forget your full bag when you do drop off/deliver at School or to Parcel's Evening. How about using your time during the full term break to have a good clear out in preparation for the winter season?

Everyone is welcome to contribute to the bin day, but we are looking to raise awareness so that bin is bursting and we can say for a collection when we get back from that term break.

The last collection raised the school £261.

**Thank you for your on-going support.**

The BSFA



# **TRENT CHURCHES CHOIR**

**“10<sup>th</sup> Annual”**

## **CAROL CONCERT**

**IN**

**HOLY TRINITY CHURCH, ROLLESTON**

**SUNDAY 11th DECEMBER**

**4.00 PM**

**ADMISSION FREE**

**LIGHT REFRESHMENTS**



**DURING THE CONCERT A COLLECTION  
WILL BE TAKEN FOR**

**REACH**

**A Local Charity, supporting people  
with Learning disabilities.**

## **BARBARA MOORE**

This tribute to Barbara Moore, who died on July 19<sup>th</sup>, is taken from information about her life supplied to us by her husband Peter Moore. A thanksgiving service took place in St Mary's Church where many friends, colleagues and Barbara's family gathered to celebrate her life.

Barbara had lived at Field House, Bleasby, for 30 years. However, she was born in Derbyshire and brought up by her mother after her father was killed at Dunkirk during WW2. She attended grammar school in Derby where she excelled in English. This led directly to a career in journalism, firstly as arts and entertainment reporter with the Derby Evening Telegraph, interviewing The Beatles and The Rolling Stones as part of her job. During her time as feature writer for the Buckingham Advertiser, Barbara was also editor of the Nottingham Topic.

For a while Barbara lived in Singapore where Peter was manager of the Singapore Branch of Nat West Bank. During their time there, Barbara became skilled in Chinese brush painting. Whilst living in Bleasby, she worked in a freelance capacity for the Newark Advertiser.

Barbara was a keen tennis fan and officiated at the Nottingham Open Tennis Championships for many years. She was also a dog lover and enjoyed walking her Labradors around the Jubilee Ponds.

As well as her husband Peter, Barbara leaves two sons, Stephen who is a commercial director with Nat West Bank and David who is a corporate lawyer with BLP Law in London, and also two granddaughters.

*We should have included this tribute in our October edition and we apologise to Peter and to our readers for this omission. Eds*



Former lodge at Bleasby Hall



## **BORN AND RAISED IN THE LOCK-KEEPERS HOUSE, HAZELFORD**

You may recall that the East Midlands BBC TV News covered the Bleasby Aircrews Memorial project earlier this year. Just after the broadcast, I received a message asking me to call a chap called Terry Harrod who said that he was born and raised in the house at Hazelford Lock and had lived there throughout WWII. Having seen the nature of the Aircrews Memorial project, he said that he would like to contribute some of his memories as they may help the research. Having contacted him, an interview was arranged between Terry, Peter Cast and me, and it turned out to be a remarkable story about what Bleasby was like to live in during the war for a young child.

Terry was born in the Lock-keeper's house in 1935. His father, Joseph Harrod, had come to Bleasby as one of the about 200 workmen who were employed in constructing the weir, lock and house at Hazelford in the 1920s. When the construction was completed, the boss for the project fired all of the workers. However, for reason of his ferrying skills, he selected Joseph and asked him if he wanted a job – as the lock-keeper. Joseph accepted the job and set up home there with his wife. At this time, the weir was higher and the river deeper than it is today. There were no footbridges to provide access to the island where the house is located. There was no electricity, so the lock gates were operated manually by turning a capstan. Lighting was by the use of oil lamps. There was no piped freshwater either and water was obtained from a well on the island. Terry said that a piped water supply was only installed when the well water became unusable due to pollution of the river in the 1950s.

In order to get to and from the island, the family used boats attached to a rope, and used an oar and the power of the flow of the river to swing the boats from the island to either bank. All visitors and provisions, fuel etc. were transported to and from the island in this way. When he was old enough to go to primary school, he attended the school at East Stoke, which meant the boat trip, and then a walk along the path alongside the river on the south side towards Fiskerton before following the track that leads to East Stoke, and the reverse at the end of each school day. Terry's parents kept a smallholding on the island, growing vegetables, and also kept chickens for eggs, as well as pigs. Milk and beef and other food were obtained by barter exchange with other nearby farmers.

Terry has many memories of the war years. He recalls that German bombers flew low along the Trent using it as a navigation aid on route to Nottingham, Coventry and Sheffield. He said no one wanted to sleep in the north facing bedroom as it faced the direction from which the attacking German bombers came. The aircraft often flew so low that he could see the crew in the cockpit. If he moved to the east or south facing windows, he could see the night skies lit up by fires and explosions from the raids.

RAF Syerston is of course located just at the top of the escarpment next to the river. The airfield opened in 1940, and heavy bombers taking off and landing were a constant background sight and sound to daily living. Terry remembers that a lone Wellington bomber would fly over when a raid was ready to be launched and flash a white light. Immediately, the sound of heavy aero engines starting up could be heard and then, depending on the wind direction, aircraft would take off over their house. The noise could be deafening at times. Terry also remembers seeing aircraft returning damaged, perhaps parts of the aircraft missing, engines out of action or smoking, and also the sounds of heavy landings, screeching tyres and brakes, and sometimes crashing aircraft. He said that it was not uncommon for aircraft undercarriages to collapse, aircraft to collide with other aircraft on landing or aircraft to overshoot the runways. Terry recalled seeing eight Lancasters crash, as well as a Wellington bomber. He believed that all of these c60 aircrewmen were killed, but following his tips, and some further detailed research, I think that in fact many of the crewmen survived, although sometimes suffered severe injuries.

In one instance though that he described, the Lancaster crewmen were killed. Terry recalls being outside on the island with his mother when a Lancaster took off and flew over their house. As it climbed, the tip of the port side wing broke off. The aircraft went into a sharp 360 degree turn and crashed just beneath the top of the escarpment above their house. The explosion blew both him and his mother off their feet. He remembers the fireball and explosion vividly. Research shows that this aircraft was Lancaster W4232, of No5 Lancaster Finishing School, Syerston. It was on a training flight and crashed on 17<sup>th</sup> April, 1944. All seven crewmen were killed instantly. The pilot, Sgt Bruce Humphreys, was serving with the Royal Australian Airforce. He was 20 years old. The average age of all of the crew members was 22.

The research also shows that most of the other incidents that Terry recalls did not cause fatalities, with the exception of three crewmen who died in a landing collision. He does recall an incident where a Wellington bomber crashed near Fiskerton after hitting its wingtip on the riverbank and which exploded in a fireball. His father went to the crash to see if he could help any of the crew members, but could not get near it due to the heat. No record of this crash has yet been found. He also recalls seeing the Lancaster that crash-landed on the River Trent at East Stoke. Photographs of this aircraft show its nose on the north bank and its tail, where the rear gunner would have been seated, underwater. Terry had been told that some or all of the crew had been killed, some by drowning, but research has shown that all of the crew survived, some with minor injuries. The young pilot showed great skill in landing this aircraft in this way, especially as his aircraft had lost power through engine failure. Terry also remembers the floods that occurred in March 1947 which meant that many of the farms near to the River Trent were isolated: his father Joseph was very much involved using his boating skills to help these farmers get their milk safely delivered to dry land daily, moving livestock feed etc.

Truly remarkable memories, and there is much more to listen to and learn. Another interview is to be arranged.

Ken Ogilvie



Chamberlain opens Hazelford Lock 1927

Going away?

Why not leave your pets with us?

## Valley Boarding Kennels & Cattery



*Situated between Bleasby and Fiskerton in the heart of the countryside*

**\*\* Kennels and catteries with outside individual runs \*\***

**Please visit to see our facilities**

**Gypsy Lane, Fiskerton | Telephone: 01636 830268**

[www.valley.talktalk.net](http://www.valley.talktalk.net)





# ACADEME ROOFING

Quality Roofing Services



**NOTTINGHAM'S NUMBER 1 ROOFING PROFESSIONALS**

CALL OUR OFFICE ON:  
**0115 950 6444**

“Our reputation is built  
on **QUALITY**, first class  
customer service, reliability  
and professionalism”



Business Directory  
Registered Member



LOCAL AUTHORITY APPROVED  
ROOFING CONTRACTORS

**All Areas of Nottinghamshire covered  
CALL TODAY!**

- Slate & Tile Roofs
- Single Ply Membranes
- Flat Roofs
- Guttering, Soffits and Fascias
- Chimneys Re-Pointed
- Industrial Roofs/Domestic
- Specialists in all lead work
- Re-roofs & New Roofs

**OVER 30 YEARS EXPERIENCE • FREE ESTIMATES**

**[www.academeroofing.co.uk](http://www.academeroofing.co.uk) • [office@academeroofing.co.uk](mailto:office@academeroofing.co.uk)**

23 • Little Tennis Street • Colwick • Nottingham NG2 4EL

### Bleasby Diary of Events

Date	Time	Event	Location
Sunday 27 <sup>th</sup> November	4pm	Advent Carol Service with the Choir	St Peter & St Paul Upton
Friday 2 <sup>nd</sup> December	Afternoon	Pupils from the school experience being evacuees	Ending walk at Village Hall
Saturday 3 <sup>rd</sup> December	9.30am	Jubilee Ponds Working Party	JPs
Sunday 4 <sup>th</sup> December	10.30am	Christingle Service	St Peter's Thurgarton
Sunday 4 <sup>th</sup> December	11am - 2pm	Bleasby School Christmas Fair	Bleasby School
Monday 5 <sup>th</sup> December	7pm, 8pm and 9pm	Defibrillator Training	Waggon and Horses
Saturday 10 <sup>th</sup> December	6pm	Christmas Carols & Lights Salvation Army & School Choir	Glebe Field
Sunday 11 <sup>th</sup> December	4pm	Trent Churches Choir Annual Carol Concert	Holy Trinity Rolleston
Tuesday 13 <sup>th</sup> December	7.30pm	WI Christmas Party	Village Hall
Thursday 15 <sup>th</sup> December	Dusk	WI goes carol singing for charity	Round and about
Saturday 17 <sup>th</sup> December	7.30	Carols for Everyone - in aid of Beaumond House	Southwell Minster
Sunday 18 <sup>th</sup> December	10.30am	Benefice Service of Holy Communion	St Mary's
Sunday 18 <sup>th</sup> December	6pm	Carol Service with the Trent Choir	St James' Halloughton
Wednesday 21 <sup>st</sup> December		Bleasby School Christmas holidays start	
Thursday 22 <sup>nd</sup> December	6pm	Carol Service with the Trent Choir	St Michael's Hoveringham
Saturday 24 <sup>th</sup> December	4pm	Christmas Eve Crib Service	St Mary's
Saturday 24 <sup>th</sup> December		Put your bin out!	
Wednesday 4 <sup>th</sup> January		Spring school term commences	
Saturday 7 <sup>th</sup> January	9.30am	Jubilee Ponds Working Party	JPs



Monday 16 <sup>th</sup> January		Deadline for Winter/February Bleasby News	
Tuesday 17 <sup>th</sup> January	7.30pm	Meeting of WI . Wayne Brewin on "John Bishop changed my life"	Village Hall
Sunday 22 <sup>nd</sup> January	9.30am	Jubilee Ponds Working Party	JPs
Saturday 28 <sup>th</sup> January	7pm	Bleasby Local History Society Annual Supper	Village Hall
Saturday 4 <sup>th</sup> February	9.30am	Jubilee Ponds Working Party	JPs
<b>Sunday 11<sup>th</sup> June 2017</b>	<b>Bleasby Open Gardens Day</b> <b>Put it in your diaries now - especially gardeners!</b>		

## **CHURCH NEWS**

### **Harvest**

We were pleased to work with the school to raise awareness of Revd Phil's Kenyan charity, St Dorcas Orphanage. The combined proceeds of collections taken at Harvest Thanksgiving services on Sunday October 2<sup>nd</sup> and Friday 7<sup>th</sup> October were donated to the charity and the school children also donated paper, pens, pencils and small balls. A group from the York Diocese went out to Kenya later in the month and took these gifts which were very well received. At a meeting in school on November 16<sup>th</sup>, representatives from the York Diocese showed a short film and talked about their visit. They also brought letters from some of the children in the orphanage in response to those written by children in our school. This is an ongoing link between Bleasby School and the school attached to St Dorcas Orphanage which should be of mutual benefit.

### **Platform**

The platform at the front of the nave was completed in time for the school's harvest service and proved an ideal stage for each class to perform their harvest songs. The three pews removed to make space for the work to be done have been sold and the proceeds used to offset some of the cost involved. Our thanks go to Michael Coombs for his excellent workmanship.

### **Advent**

The children from Year 6 visit church on Friday 25<sup>th</sup> November for an Advent Workshop. This has worked well in previous years with opportunities to learn about key figures in the Bible who anticipated the birth of the Messiah and help to increase our understanding of the Christmas story. Children make Advent Crowns for church and school which will be used in worship during December.

## **Women's Refuge**

In response to funding cuts to local services and as part of the giving programme across the benefice, we will be collecting for the Newark Women's Refuge during Advent. There will be a box in the church porch where toiletry items can be placed at any time. The women seeking refuge are provided with basic items on arrival but thereafter have to supply their own. Shower gel, shampoo, toothpaste, deodorant etc are all welcome. If you have other items of clean bedding, pots and pans, children's clothes and shoes please contact Rachael Andrew. Asda vouchers of £5 can be left with Rachael, Diana or a PCC member. The WI are supporting this charity through their annual "pretty parcel" gift scheme. Between us we ought to be able to make a significant contribution to a worthwhile cause.

## **Benefice Holy Communion and Bereavement Service**

On Sunday November 20<sup>th</sup> the monthly service of Holy Communion for the seven churches in the group came to Bleasby. We all benefit from being part of this larger group, not just at services where a big congregation adds to atmosphere and impact but as a forum for the exchange of ideas and experience and sharing problems and anxieties about the church and its role in our communities. During the service there were opportunities for individuals and congregations to remember those who had died during the past year.

## **Christmas Services and Festivities.**

As we had a service here last year, there will be no service in Bleasby on Christmas Day but within the benefice there will be opportunities to worship and receive communion in one of our sister churches. Please consult the Benefice Christmas Card, the service schedule on page 21 or notices boards. There will be a benefice service of Holy Communion here on the Sunday before Christmas, 18<sup>th</sup> December. On Christmas Eve there will be an opportunity to join in our Christmas celebrations and to take part in the Christmas story at our annual Crib Service at 4pm. Please encourage your little ones to dress as angels, shepherds, sheep or kings and older children to read. Readers are usually chosen by Mrs Town at Bleasby School if children let her know they would like to take part. We are always pleased to have older children, young people and adults to volunteer for acting roles (words supplied) and for Bible readings so please don't be shy in coming forward. Variety is always good and there are one or two "leading characters" who feel they have been around too long! Trent Churches Choir will be singing carols at various churches in Advent and the run up to Christmas so please consult notice boards for further details. The Salvation Army Band will be leading carol singing on the Glebe Field on Saturday 10<sup>th</sup> December at the annual community event.

Diana Temperley and Rachael Andrew, Churchwardens

## December Church Services in the West Trent Group

(HC = Holy Communion MP = Morning Prayer EP = Evening Prayer)

	Bleasby	Halloughton	Hoveringham	Morton	Rolleston	Thurgarton	Upton
Sunday 4th	10.30 MP		6pm EP	9.00 HC	10.30MP	10.30 Christingle	10.30 HC
Sunday 11 <sup>th</sup>	9.30 HC		10.30 MP	10.30 MP	11.00HC 4pm Carol Concert	10.30MP	10.30 MP
Sunday 18th	10.30 Benefice HC	6pm Carol Service		6pm Carol Service			4pm Carol Service
Thursday 22nd			7pm Carol Service				
Saturday 24 <sup>th</sup> Christmas Eve	4.30pm Crib Service		3pm Crib Service		6pm Carol Service	6pm Carol Service	
Sunday 25 <sup>th</sup> Christmas Day		9.00 H C	10.30 HC	10.30 MP	10.00 HC		10.30 MP

NB Sunday January 1<sup>st</sup> 10.30 New Year's Day Benefice HC at Upton

## **REFLECTIONS AT THE JUBILEE PONDS ON THE 'BLEASBY BUBBLE'**

Whilst on my way to the Ponds on Remembrance Sunday I called in at the churchyard to pay my respects at the War Memorial and there, in a golden haze of early morning sun, I pondered upon the names inscribed thereon. While reflecting on such losses, I was greeted by a clearly loving couple with whom I stayed and reflected awhile on the state of the world, contrasting our lives in Bleasby with those who lived in a state of turmoil and realising that we were, apparently, living in a bubble potentially immune and uninvolved in the farther reaches of our planet.

We went our separate ways and I continued to the Ponds. Reflecting on our conversation, I entered the low sun's dappled light which scattered its rays through the patchwork of autumn-toned leaves along the Ponds' corridors of trees. An acorn-feeding jay squawked from the oak boughs, a kingfisher piped as it coursed its purposeful flight across blue sky-reflected waters and a family flock of long-tailed tits danced entrancingly low above my head. To me, each of the three epitomised the joys and fruits of life – good food, good health and good friends and family.

Flocks of tufted duck and gadwall cackled contentedly together on the calm waters, whilst the swans cruised majestically between them without hindrance or malice. Coot and moorhen got on with the daily round of "this and that" and a stoat ambled across my path, giving me but a casual glance.

The spell of quiet reflection and absorption was interrupted by the harsh and intrusive clamour of carrion crows and, waking from my mental idlings, I looked into the

autumn-thinned branches of an ash to see a stately buzzard perched prominently, resolutely ignoring the pestering and mocking crows. Apparently unmoved by its adversaries, the buzzard stoically held its ground until the crows tired of their futile harassing and then, as if having made its stance and point, it lazily but magnificently took to wing and glided over the meadow to join a party of rooks in a golden-shrouded beech tree where they nonchalantly accepted one another without squabble or menace. The buzzard with slightly ruffled feathers, stretched and adjusted his plumage and the group settled down into peaceful appreciation of the bright and warming sun. What analogies I saw here!

St Mary's church bell tolled, calling the parish to remember the lives of their forebears in family and village and the "bubble" took the form of a mini-earth whose compass extended well beyond the parish of Bleasby. This is not a fragile, fleeting state – bright and shiny without substance – but a rock, a foundation upon which we can be restored, safe and secure – a base from which to go out into the increasingly uncertain world to try to help bring order, calm, good sense and good will. A determination to try and build where others would destroy.

PDC

## **ST MARY'S ORGAN**

The organ in St Mary's Church has always been admired for its elegant looks but now there's more! We were already aware of some of its history, including its journey to Bleasby, through the farewell address of the Revd John Marsh, vicar of Bleasby until 1874. However it was only just recently that we learned of its amazingly important pedigree. Revd Marsh had recorded that the organ was built for his grandfather, another John Marsh and was installed in his home, Nethersole House near Canterbury in 1783, and that it had been transported (after a number of homes) to Bleasby in 1863 and given by the Revd Marsh to the church in 1869.

But what we didn't know was that Grandfather John Marsh was a noted composer of his time, having written at least 350 compositions including 39 symphonies – some of them are still available today on the Chandos label. He was also a very proficient organist. Marsh was a lawyer by profession and also organised the musical life of such places as Chichester, arranging the subscription concerts there for 35 years. He also kept a very full diary of 37 journals which have been published in two volumes by Pendragon Press. This is said to be one of the most important sources of information about 18<sup>th</sup> century music and, indeed, society now in existence.

But to the organ itself – experts on organs say that this is a most important instrument and are planning to hold a conference in the church next year in celebration of our august "celebrity" organ.

Barbara Cast

## **THE FALLING LEAVES AND THE RISING TABLE**

We have been very fortunate this autumn, having experienced an extended summer and a mild – and comparatively dry – late autumn, giving our village drainage system an easy time with little water flow, a low water table, moderate river levels and a late, potentially clogging, leaf fall. The late November start to wintry conditions of lower temperatures, stronger winds and squally conditions, however, reminds us to prepare for winter and the increasing flooding risks that it brings.

The Internal Drainage Board has, as always, served us well and during the late summer/early autumn (when crops were cleared, the breeding season ended and plant growth slowed) they cleared our eastern drainage system which makes its way by the village hall, behind St Mary's Church, under Ham Bridge and on to the Trent towards Fiskerton, having also collected water from our western drainage system known as Holme Dyke.

We can all now additionally help one another minimise flooding risks by -

- Keeping any drains, dykes and ditches on or near our properties free flowing and reporting any blockages and/or obstacles that we cannot clear ourselves.
- Checking as we walk around the parish, along our footpaths and by our watercourses that everything is in order.
- Clearing the leaves from our drains and gutters and storing them to produce soil-improving leaf mould.
- Keeping the drainage openings in our kerbstones clear of debris and avoiding blocking them accidentally with sweepings.
- Remembering to only flush the “3 Ps” down toilets and disposing of fats by feeding the birds or absorbing on kitchen paper and depositing in bins.

As the winter progresses all this preparation and vigilance will pay dividends and, as rainfall increases and the water table rises, surface water will be able to drain away from the village, thereby reducing the risk of flood and the damage it can do to our properties.

Some Bleasby residents are reporting increasing difficulty in getting affordable house insurance cover once the company approached looks at their postcode and concludes that the house is in a floodplain and therefore at risk of flooding. Companies can be reluctant to even consider insuring properties that, by experience, have proved to be unaffected by previous flooding events in this village. The Government initiated Flood Re system (which allows insurance companies to collect a levy to offset large flood damage claims) should always be referred to in any insurance application, but it does not guarantee a successful negotiation. However, by proper attention to our existing systems and taking care of our existing services we can all make serious flooding less likely.

Peter Cast on behalf of the Flood Action Group



## DOMESTIC BLISS

Indoors, fruits soak in brandy as spices scent the autumn air while  
Outdoors dead leaves whirl, rain pelts a day already grey with care  
Indoors the woman hums, chore-reddened hands chop and peel  
Outdoors a fat and fluffy squirrel eats the birds' bread for his meal

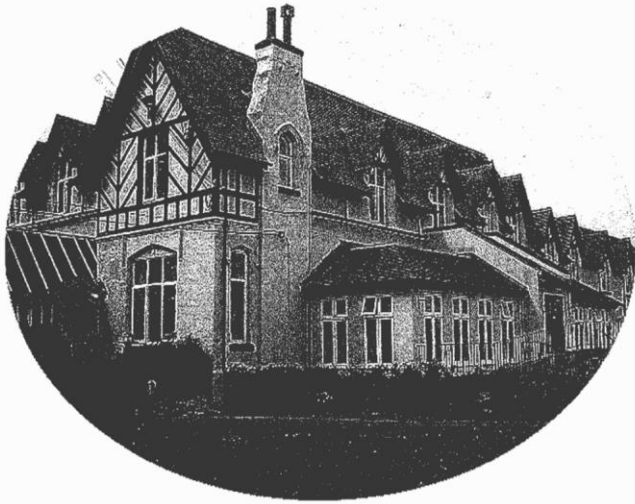
Indoors old jam jars are methodically scrubbed and washed  
Outdoors leaves jam the gutters, rains down the drainpipe gush  
Indoors the preparations done, she brews a cup of tea  
Outdoors is through the wet window, glad to be indoors is she

Indoors is love and light and warmth and all in life that's good  
Outdoors is harsh and hoodied and would hurt her if it could  
Indoors the radio announces the evils of the world reside  
Outdoors. She curls up on the sofa and wishes she could hide

Indoors the jars of mincemeat cool, she starts her husband's tea  
Outdoors her husband's driving home, can't wait with her to be  
Indoors is an oasis from the stress and strains of life  
Outdoors is cold and angry, unlike his warm and loving wife.

Justine Andrews





# *Hazelford*

*The Provider of Quality Care*

Our home is situated in a beautiful location with open views of the river and surrounding countryside. With lovely gardens and an abundance of wildlife, this makes Hazelford a delightful location for our residents, to some of whom we offer a short break; for others we become their home.

We pride ourselves in offering a home from home environment with an excellent ethos whereby our residents are involved in the decisions we take. We focus on our residents' aspirations, ideas, views and suggestions.

We have a person centred approach to the care of the residents: this approach is vital to ensure the best possible outcome and wellbeing.

Dementia care is a specialist area: we ensure with sensitivity that the resident is supported continually with person centred care planning, reinforcing daily the aspects of their lives they enjoy to ensure wellbeing and pleasures on a daily basis as, sadly, the previous day may be forgotten.

Our aim is to offer stimulating activities, with one to one time for those who may have dementia: we specialise in this area and our approaches create a relaxed harmonious environment for all.

Our bedrooms are large with views over the countryside and offer a choice of colour and furnishings, personalising them to suit our residents' preferences and choice.

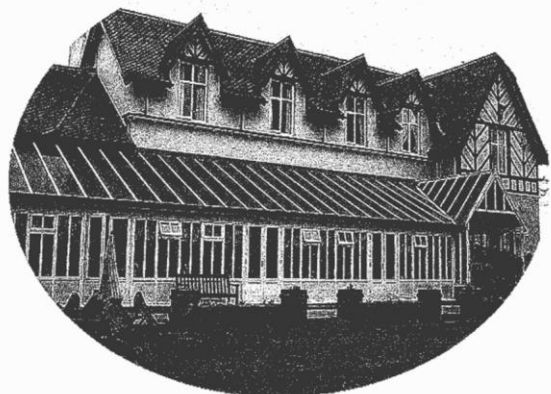
Please feel able to visit our home at any time – a warm welcome awaits you. We encourage families to also have an input into the plans the home may make. We hold family and friends of the home evenings.

With spring and summer comes along a plan of social events: for the summer an annual garden party, summer fair and schedule of outings to various venues.

## **HAZELFORD**

**Boat Lane  
Bleasby  
Nottingham  
NG14 7FT**

**Tel: 01636 830207**



## **BLEASBY'S BUS SERVICE – USE IT OR LOSE IT!**

The Travel Wright bus service which runs through Bleasby on Tuesdays and Thursdays, generated solely because of the actions of a few individuals in Bleasby and Bleasby Parish Council, with the support of our County and District Councillors, has been running now since 11<sup>th</sup> October. It is a free bus and, although named the MediConnect (for funding purposes) it is for the use of everyone for all activities in Southwell. It is on a nine month trial and, if it is not well used, we will lose it!

Set out below is the timetable – please think about taking the bus to Southwell or to Lowdham rather than getting out your car. It will save you money, help prevent overuse of fuel, give you a chance to chat as you go, provide a new perspective of the countryside and villages as you take your journey and, more vitally, keep the service going for those who don't drive or have no access to private transport.

<b>Lowdham to Southwell</b>				
Lowdham Main St near Medical Centre		1010	1220	1345
Lowdham Main St near the Magna Carta		1013	1223	1348
Lowdham Station Rd near the station		1014	1224	1349
Caythorpe Main St	0906	1017	1227	request
Hoveringham Main St/Boat Ln junction	0910	1021	1231	request
Thurgarton Bleasby Rd	0917	1028	1238	request
Bleasby Main St	0921	1032	1242	request
Fiskerton Main St near Post Office	0926	1037	1247	request
Morton Main St	0929	1040	1250	request
Southwell Church St by Minster	0933	1044	1254	
Southwell Ropewalk by Medical Centre	0935	1046	1256	

Where marked "request" the bus will stop for setting down only

<b>Southwell to Lowdham</b>			
Southwell Ropewalk by Medical Centre		1135	1300
Southwell Church St by Minster		1139	1304
Morton Main St		1144	1309
Fiskerton Main St near Post Office		1147	1312
Bleasby Main St		1153	1318
Thurgarton Bleasby Rd		1156	1321
Hoveringham Main St/Boat Ln junction	0953	1203	1328
Caythorpe Main St	0957	1207	1332
Lowdham Station Rd near the station	1001	1211	1336
Lowdham Main St near the Magna Carta	1003	1213	1338
Lowdham Main St near Medical Centre	1006	1216	1341

*Whilst every effort is made to ensure accuracy, the editorial team cannot accept responsibility for errors or omissions in articles appearing in Bleasby News. The views expressed in Bleasby News are not necessarily those of the Editors nor of Bleasby Parish Council. Bleasby News is distributed by local volunteers to whom we remain very grateful. Printed by Toot Hill School Reprographics.*

# D. J. Hall Funeral Directors

Southwell & District Funeral Service

Your local independent funeral directors offering a  
personal and caring service

Verne House

62, King Street

Southwell

TEL: 01636 812481

EMAIL: [sdehall2000@btconnect.com](mailto:sdehall2000@btconnect.com)

WEB: [www.djhallfuneraldirectors.co.uk](http://www.djhallfuneraldirectors.co.uk)

## **NJN JOINERY**

---

Phone: Nigel Newcombe  
on

01636 525506

or

Mobile: 07837 235427

**ALL TYPES OF JOINERY  
AND  
MAINTENANCE WORK  
UNDERTAKEN**



# SOUTHWELL TRAVEL SHOW 2017

Hosted by Hyde Barker Travel

**Tel: 01636 816 262**

**Saturday January 21st | Saracens Head Hotel 10am - 3pm**  
**Exclusive show offers - Expert advice - Presentations - Holiday raffle**

**Exchange this advert for a £50 holiday voucher  
at the show or at [www.hbtravel.co.uk](http://www.hbtravel.co.uk)**

## **Southwell Travel Show- Bigger and Better**

Now entering its 6<sup>th</sup> year, the annual Southwell Travel show is set to be bigger and better than ever before. On the 21<sup>st</sup> January from 10am to 3pm, 26 of the UK's top independent operators will be exhibiting at The Saracens Head in Southwell to share their knowledge and offer inspiration for exciting holiday destinations for 2017 and beyond.

From Jersey to Japan, all destinations will be covered and you'll find the right person to talk to. Be inspired to see the world with adventure holiday specialist Exodus; enjoy the luxury of VIP door to door travel with a Titan, experience train travel with a difference with Great Rail Journeys or enjoy a tailor-made tour through Asia with Transindus, through China with Wendy Wu or New Zealand with Silver Fern.

Travel experts attending this year include Saga, Kirker, 1<sup>st</sup> Class Holidays, Classic Collection, Veloso, Seabourn, Holland America, Serenity, Typically Italian, Sunvil and Premier and river and for the first time ocean cruise operators such as Ama, Seabourn and Holland America. There will be scheduled presentations during the day at the Hyde Barker Travel Agency, from Riviera Travel, Silver Fern Holidays, Hurtigruten and African Pride.

**Take Advantage of on the day show offers and don't forget to use £50 voucher against the cost of all holidays featured at the show (see advert).**

Booking your holiday through Hyde Barker ensures you won't waste precious time searching through hundreds of internet sites to find your perfect holiday; instead let the agency's long standing team do what they do best - imparting their insider knowledge, worldwide destination expertise, and well-kept travel secrets, ensuring an unforgettable holiday experience, wherever the destination!



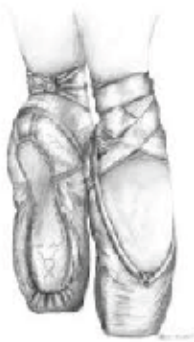


We have Ballet, Modern and Tap  
Dance Classes in Fiskerton for all  
ages!

Why not let your Precious Princess or Playful Pirate take their  
first steps in to the Magical World of Ballet! With our Princess  
and Pirate Ballet class for ages 3 and over!

We have classes for adults too! Zumba and  
Tap

For more information please visit our  
website



[www.attitudedanceschool.com](http://www.attitudedanceschool.com)  
[info@attitudedanceschool.com](mailto:info@attitudedanceschool.com)

07974 745740



Come and join us  
for



with



Wednesday 7.30 - 8.15pm  
At The Arthur Radford Hall  
Fiskerton cum Morton

For more information visit [www.attitudedanceschool.com](http://www.attitudedanceschool.com)  
Or call 07974 745740

# **ROB BROWN LTD PLUMBING AND HEATING**

MOBILE 07973890499

NOW BASED IN BILSTHORPE

email robinb9@gmail.com  
more than 20 years experience

INSTALLATION SERVICE & REPAIRS  
OF DOMESTIC GAS APPLIANCES &  
HEATING & HOT WATER SYSTEMS

ALL PLUMBING WORK UNDERTAKEN  
SMALL BUILDING WORKS  
AND PROPERTY REPAIRS  
ELECTRICAL REPAIRS

DO YOU RENT PROPERTY?  
WE DO LANDLORD,S GAS CERTIFICATES  
MAINS PRESSURE HOT WATER  
Fully insured /no call out fee



# Your local Hearing Care Specialists

**0115 961 8351**

**FREE HEARING CHECKS**

**EAR WAX REMOVAL**

**TINNITUS SUPPORT**

**HOME VISITS**

Whether you are looking into hearing issues for the first time or are struggling with your existing hearing aids then **Correct Hearing can help.**

We are a family run and owned independent practice, with over 30 years experience.

**Call today for an informal chat or to request your FREE Hearing Guide 0800 368 47 47**



**Sarah Vokes**

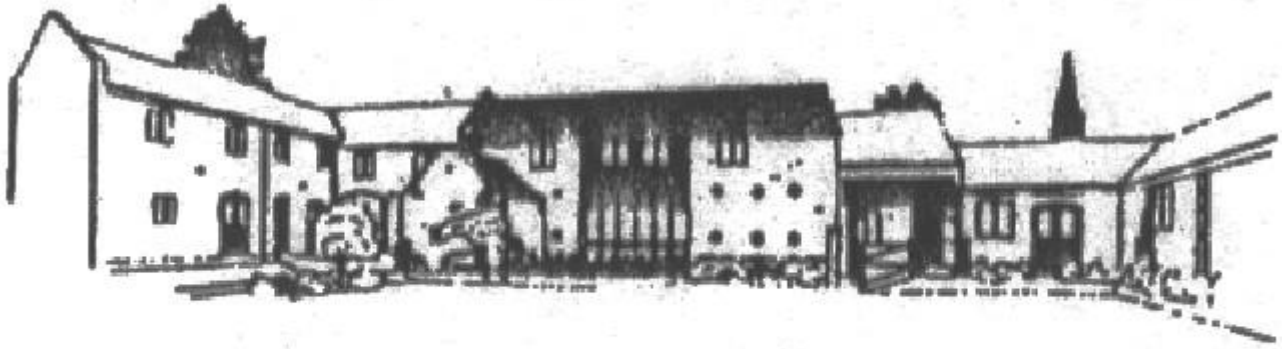


**Damian Eyre**

**Web: [www.correcthearing.co.uk](http://www.correcthearing.co.uk)**

**Email: [info@correcthearing.co.uk](mailto:info@correcthearing.co.uk)**

**242 Oakdale Road, Carlton, Notts, NG4 1AD**



# THE BYARS

A small, family owned and managed, independent Care  
Home situated amidst the rural landscape of the Trent  
Valley

The highest quality care in the highest quality  
accommodation

Our home offers long and short term care for the elderly

Viewing welcomed. Further details on request

THE BYARS

· CAYTHORPE · NR. LOWDHAM ·  
NOTTINGHAMSHIRE · NG14 7EB

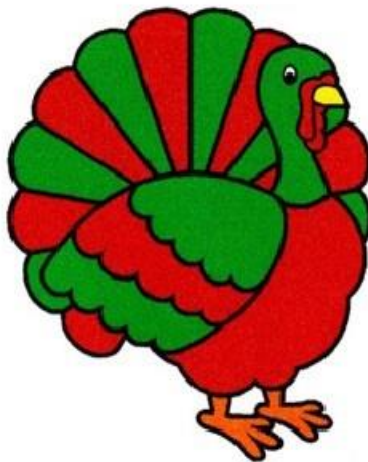
REGISTERED NURSING HOME

**Tel: 0115 9663981**





## **JACKSONS FARM REARED CHRISTMAS TURKEYS**



**PLACE YOUR ORDERS NOW!**

**OUR PRICE £3.30 PER LB**

**PAY US A VISIT AT:**

**HOLME FARM  
GONALSTON  
NG14 7JA**

**OR CALL US ON : 0115 9663970**

# Ben Morgan

## Painting & Decorating Services



**T: 01636 831333**

**M: 07775 888851**

**E: [ben@morganpainting.co.uk](mailto:ben@morganpainting.co.uk)**

### Domestic

**"We have used four different decorators over the last few years and every time, there has been a problem and the job has not been carried out to a satisfactory result. Ben was recommended to us and the job he did was fantastic and as we wanted. He is very professional in both his work and his personality. He offers very competitive rates and I would definitely use again and highly recommend."**

***Nicola & Nigel Bennett, Goverton***

### Rented

### Office

### Insurance

**"Ben has just completed our kitchen extension and done a fantastic job, I would highly recommend his services. He is highly skilled and professional with in depth knowledge of paint and products, ensuring our walls are wipeable and the paint will not fade. We feel this is money well spent as our decoration will stand the test of time in a heavily used kitchen."**

***Janine and Chris Ford, Southwell***



**BenMorganPainting&Decorating**





Traditional Village Pub  
Serving Food Wednesday to Sunday

Wed - Evening Menu 5.30pm - 9.00pm  
Plus our Take Away Menu from 5pm  
Including our Wood Fired Pizzas

Thurs/Fri/Sat - Lunchtime Menu 12.30pm - 3.30pm  
Evening Menu 5.30pm - 9.00pm

Sunday - Sunday Lunch Menu 12.30pm - 4.00pm

To reserve a table call 01636 830283



Visit our website [www.thewaggonbleasby.co.uk](http://www.thewaggonbleasby.co.uk)



Gypsy Lane, Bleasby, Nottingham, NG14 7GG

# Bleasby School

# Christmas Fair

**Sunday 4th December**  
**11am – 2pm**

*Sponsored by*

TAYLOR MOTOR GROUP



- Santa's Grotto (to be pre-booked)
- Bleasby School children arts and crafts stalls
- Food provided by Home from Home Mobile Kitchen
- Hot chocolate, mince pies, mulled wine and cakes
- Licenced bar ● Children's Christmas Art Room
- Chocolate tombola ● Tuck shop
- Christmas Carols around the tree
- Christmas Cinema Room
- Stalls offering gifts, cards and stationery, bags, scarves, jewellery, wreaths and much, much more.

FOOTSTEPS



All proceeds go  
to the BSFA



Admission fee on arrival