

BLEASBY NEWS



Remembering the Bleasby Aircraft Crashes

APRIL 2016



For more details go to www.bleasbycommunity.uk

Or see posters around the village

To join the maypole dancing group and/or register for the
bake-off please email charlotte.gent@btinternet.com

Or phone 01636 830105

Bleasby Parish Council

Welcome to April's Bleasby News

"Spring is here; the grass is ris. I wonders where the birdies is" go the words of an ancient rhyme. Perhaps you are wondering what happened to the lonely buzzard on the front cover of our last issue. Hopefully it is one of four or more seen recently enjoying a spring surge above High Cross. On the same occasion the first skylarks of spring were also over the hill, climbing invisible ladders and announcing their presence. The sheep are back in the home field at Manor Farm along with new-born lambs, triplets among them. Bleasby gardeners are flexing their muscles and persuading mowers into activity. Our school children are looking forward to their Easter break, as no doubt are their older brothers and sisters.

Young families will find much to enjoy over the next few weeks as National Trust and other such properties open their doors after winter, the lengthening days provide opportunities for being outside into the evening and within our village they can enjoy an Easter Egg Hunt and Maypole Dancing on the Glebe Field. The Toddler Group will be celebrating their first anniversary - we congratulate them on what they have achieved and hope the children enjoy the special event planned for them. BSFA are busy planning spring and summer events for our enjoyment.

Most village organisations will be reviewing the year and presenting reports. This is a good opportunity to find out what has been going on to support the community. The Annual Parish Meeting on 27th April and the Annual Parochial Church Meeting (in Church on April 28th at 7.30) are open to everyone. For other organisations it will be members only but please give them your support if you are a member. It is becoming increasingly difficult to find people willing and able to stand as officers but our community would be the poorer if any of these organisations were to fold for lack of volunteers. These events, and others, are advertised within these pages and listed in the Events Diary on page 18. We hope you will find much to enjoy.

We always look forward to hearing from residents - please send your articles etc for June's Bleasby News to:- Rachael Andrew, Sutton House, pran@suttonhs.fsworld.co.uk or Barbara Cast, Little Dower House, barbaracast@btinternet.com by 16th May.

Your Editors, Barbara and Rachael

LAKE DISTRICT HOLIDAY COTTAGE

Borrowdale Road, Keswick

3 Bedrooms | Sleeps 6

TO LET

Fully refurbished holiday cottage with gas central heating,
open fire place and private parking

Views overlooking the fells, front and rear gardens,
superb location

For further details please ring

01636 830209 | 07812 101303

**A. Rickett & Son,
Bleasby
Builder & Contractor
Tel: 01636 830468**

BLEASBY PARISH COUNCIL NEWS

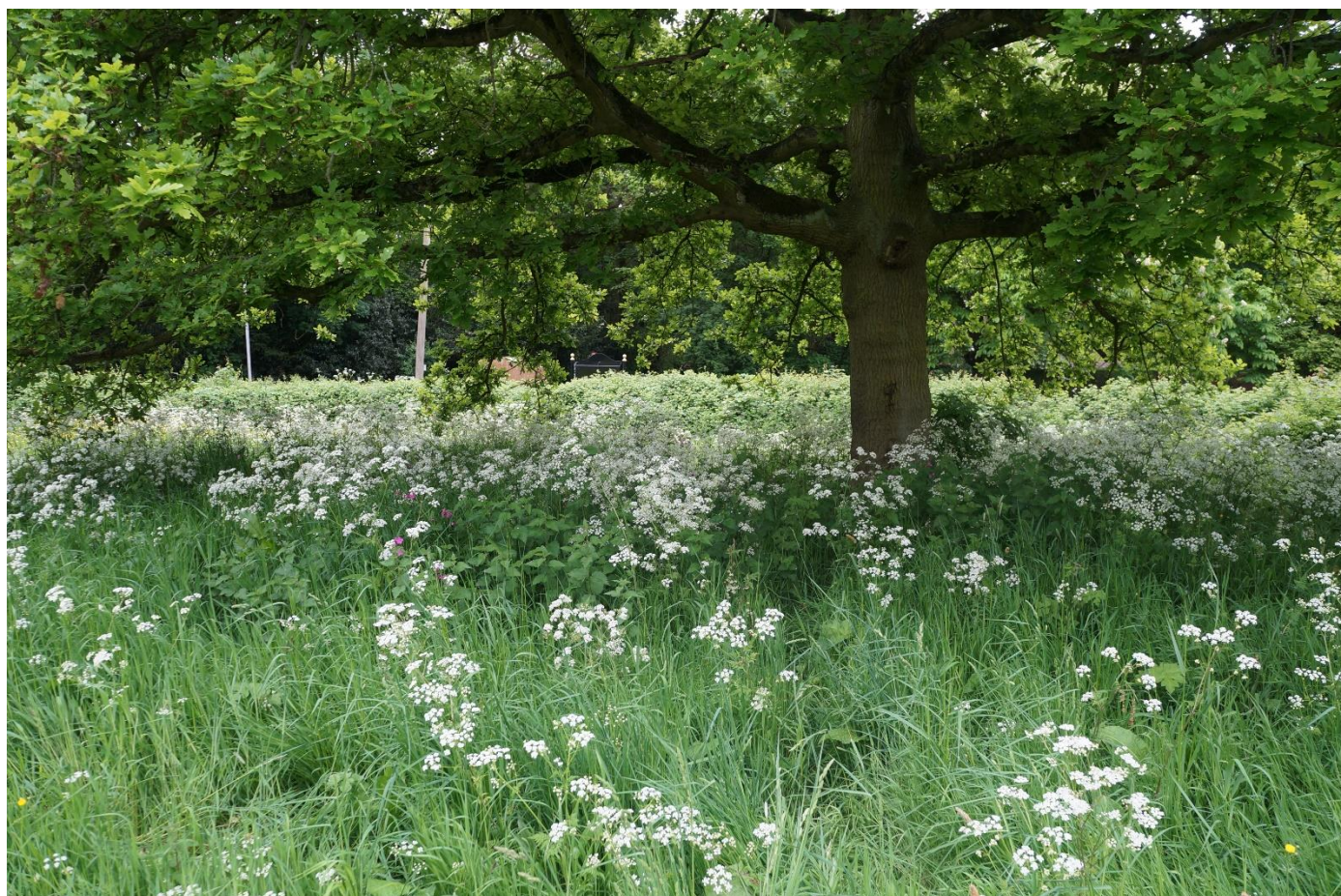
Hopefully as you read this copy of Bleasby News you will gain a flavour of springtime optimism in the village as we all set out on positive plans for the future. With this edition you will find details of the Annual Parish Meeting to be held on Wednesday, 27th April. This is a meeting of Bleasby Parish - rather than a meeting of the Parish Council – giving all residents an opportunity to reflect on the past year and help prepare for the new year by hearing reports and being able to raise issues, offer suggestions and generally “get a feel” of how the village is faring on several fronts. Our District Councillor, Roger Blaney, and County Councillor Roger Jackson will both be contributing and Parish Councillors will also be present. We hope very much that you will be able to attend and help steer a continuing positive course for Bleasby.

The Parish Council is now resolutely focused on achieving the very best for the future of the parish through the forthcoming Parish Plan – details of which you will also find as a flyer with this edition. To be effective this plan should be owned and driven by the community – the Council merely acting as an ‘initiator’, ‘supporter’ and, ultimately, ‘deliverer’ of the agreed needs and wishes of the village. We are desperate to ensure that everyone can get involved in some way and that all, young and old, born-and-bred or recently arrived, feel that they have a ‘voice’ and will be listened to. Initially we need to establish a representative steering group which will, with support from the Council, help plot the course and progress of the plan, encouraging the involvement and contributions of as many village groups, organisations and individuals as possible. We want to include and involve YOU – please reflect on what you might be able to contribute to your village.

As a way of prompting community spirit and identity we are planning a programme of events on the Glebe Field this year and hope that you will all want to get involved. The first event, organised by Ian and Liz of the Waggon and Horses – is an Easter Egg Hunt at noon on Easter Monday. Liz and Ian have already amply demonstrated that they want to be an integral part of parish life – and we are certainly seeing them as such! On the weekend of 23rd/24th April we will be celebrating St George’s Day and the Queen’s 90th Birthday on the Glebe Field and we are hoping that everyone will dress in some appropriate or patriotic way. In order to mark the Queen’s birthday a commemorative tree will be planted and commemorative medals will be presented to all the children of Bleasby Parish who are 16 and under. To bring a really traditional and country flavour to our events programme, there will be maypole dancing around our GF maypole, with a few old-fashioned country games and competitions for all the family to enjoy on Monday, 2nd May, to hopefully re-establish a May Day custom in the parish. Then on 18th June follows what has become our own tradition of the BSFA and Bikers’ Return Summer Fair organised by the friends, parent and supporters of our dynamic and successful Bleasby School. We are also hoping to provide a series of mini-musical events in July to try and highlight our own home-grown musical talent and provide a range of music to suit most tastes. If you would be willing to perform as an individual, a member of a scratch group or are a member of or have contacts with bands, ensembles, choirs etc please let us know so that we can formulate a programme and facilitate events.

We are, of course, hoping that these events will provide focus and momentum for the Parish Plan and that other events may be initiated by them along with joie-de-vivre, esprit de corps and bonhomie! Maybe even a French twinning!!

Peter Cast on behalf of the Parish Council



"SUCCESS IS GOING FROM FAILURE TO FAILURE, WITHOUT LOSING YOUR ENTHUSIASM"

It was either Abraham Lincoln or Winston Churchill or both who are reported to have said that. I like it a lot and keep it next to my desk for when I need it!

I heard recently of someone who at the age of 100 was still running a charity for disadvantaged people. A friend's employees, in a business selling children's toiletries to supermarkets, devoted their lunch times to cycling from the UK to Kenya (on an exercise bike naturally) to raise money for the children of our orphanage (www.bungomacalling.co.uk). I read about someone who registered to help and house a refugee family.

Such people made me reflect on what I'm enthusiastic about, beyond the resurgence of English Rugby or the like!

Maybe these examples show a cross-over of enthusiasm and compassion, without worrying about the degree of success. An enthusiasm that sustains oneself whilst enhancing the lives of others, however small is already a success.

Is this what the Easter theme of new life can be about? Instead of giving up something for Lent we could adopt a new enthusiasm for life?

What's your enthusiasm?

The Revd Phil

"None are so old as those who have outlived enthusiasm"

- Henry David Thoreau

phil_07@btinternet.com - www.westtrentchurches.co.uk - 07720010066

(The West Trent Group includes the 7 Parish Churches of Thurgarton with Hoveringham, Bleasby with Halloughton, Rolleston, Morton with Fiskerton and Upton.)

The Revd Phil is contactable as above or via the administrator for the West Trent Group: Sarah Hall at 07855022921 or WestTrentGroup@gmail.com

Going away?

Why not leave your pets with us?

Valley Boarding Kennels & Cattery



Situated between Bleasby and Fiskerton in the heart of the countryside

**** Kennels and catteries with outside individual runs ****

Please visit to see our facilities

Gypsy Lane, Fiskerton | Telephone: 01636 830268

www.valley.talktalk.net

Thinking of Visiting Shropshire?

Richard and Wendy look forward to welcoming you to their 4*

B&B Woodville

Clun Road

Craven Arms

Shropshire SY7 9AA

Situated in unspoilt countryside – excellent for walking and
close to the ancient market town of
Ludlow with its many award winning restaurants

CALL 01588 672521 or 07802 509557 glazebrook1@tiscali.co.uk
www.woodville-bed-and-breakfast.com

BLEASBY LOCAL HISTORY SOCIETY – AIRCREW MEMORIAL STEAM TRAIN **– 20th AUGUST, 2016**

In earlier editions of the Bleasby News I have written about my research into the RAF Bomber Command crashes that took place here in Bleasby during WWII, and my detailed findings. My research found that nineteen young men, all volunteers, died in three aircraft crashes that occurred here in Bleasby during 1941 to 1943. The oldest was 38 years of age and the three youngest were aged just 20. Five of these aircrew men were married and at least one had a child.

Four of the crew members were from Poland, flying in a Wellington on a training flight with the newly formed 304 (Polish) Squadron, RAF. Their aircraft crashed near where Bleasby School is located today. The other young men were the crew members of two Lancaster bombers, one of 61 Squadron based at Syerston which was returning from an air raid over Germany, and the other from RAF Wigsley was on a training flight. The aircraft were involved in a mid-air collision over High Cross Hill, just to the north of Bleasby, in the early hours of 1st September, 1943. One of these airmen was from Canada, two from Australia, one from Eire and the rest were British. All available information about each of these aircrew men can be found on the Bleasby Community website – www.bleasbycommunity.uk.

There is no visible evidence here in Bleasby today of these events, and most of us living here now had little or no knowledge of either of the incidents, nor of the identities of the young men who had died. However, following the completion of research, the circumstances of the crashes and the identities of the crew members are now known and, as a continuation of the WWI War Memorial project, plans are being developed to construct a new roadside memorial here in Bleasby to commemorate these young men. The exact site and design of the memorial is still unconfirmed, but progress has been made. However, we have decided upon a target date for the completion of the new memorial which is 1st September, 2018. This date, symbolically, is exactly 75 years after the day of the collision of the two Lancasters.

The project has become a Bleasby Village activity, with St Mary's Church continuing to provide the treasury function, Bleasby Parish Council has agreed to be the long term custodian and caretaker for the completed memorial if it is erected in Bleasby other than the churchyard, and Bleasby Local History Society is presently helping with the next stage of the fundraising campaign.

The costs for the new memorial are still being obtained, but it is likely that funds of c£6,000 to £8,000 may be required, depending upon the construction material used and the complexity of manufacture. Funds have been raised from talks, the sale of nest boxes, raffles and donations over the past year and we presently have c £1,500 available for the project. One regular source of cash has been the 'loose change' collection at the Waggon and Horses, so please continue to call in for a drink and drop your change in the box. Every little bit helps.

We are planning a major fundraising event this summer which it is hoped will be a great and memorable day out for many villagers, but also a reminder to us all of the sacrifice of their lives that was made by these young men.

This event is a day out on the Great Central Railway, going back in time to travel and dine in 1950s style, travelling in Pullman Car comfort, complete with a five course meal. The train will be pulled by a steam locomotive, both selected for us and driven on the day by Bill Brazier, a long time Bleasby resident. Travel from Bleasby to and from Loughborough will be by coach leaving from the Waggon and Horses. For those who want to experience a cab ride in the locomotive at their own risk between stations on the line, this can be arranged, subject to numbers, and booked in advance.

A choice of one of two starters and main courses will be available, and most other special dietary requirements can be catered for, all pre-ordered. A child's meal will be served for younger passengers. Drinks can be pre-ordered to be served at your reserved seat at extra cost. Access for the disabled can also be provided, again by prior arrangement

We are taking bookings now for this excursion. Priority will be given to Bleasby residents who book before the end of April 2016. A minimum number of 75 adult priced tickets must be sold to make the excursion viable. The excursion will be advertised more widely in May 2016.

The maximum number that can be catered for on the train is 126 people, including children. No non-dining seats are presently available, although additional coaches may be added to the train if there is a demand for these seats, but only if the required minimum of adult priced dining seats have been sold.

With this edition of the Bleasby News, you will find an application form for excursion reservations. If you wish to book on this excursion, please complete and submit the form, remembering to attach your cheque which can be post-dated to 1st June, 2016. Each adult priced ticket costs £75 and includes a donation of £20 for the project. Child seats, including a child's meal, costs £35 each, with no donation included, but there are only a maximum of 42 child seats available. If you are able and willing to do so, it would help further if you would complete and sign the attached Gift Aid form, and attach it to your application. Completed forms can be either **delivered in a sealed envelope** to me at Forge Cottage, Bleasby, or handed to any Bleasby Local History Society Committee member, or alternatively handed in at the bar of the Waggon and Horses. Please be sure to include your contact details.

Cheques are to be made payable to St Mary's Church – Memorial Fund. Cheques will only be presented for payment following a decision being made that the project will be viable. If a decision is made on 9th June that the project will not go ahead due to lack of support, your application form and cheque will be returned to you.

If you not able to take part in this event, but would like to make a donation to the project, then please return your donation, with completed Gift Aid form if appropriate, in a sealed envelope to any of the above recipients. **Please do not pay for your tickets or your donation in cash.**

If you have any queries, please contact the organisers by email at bleasbybscm2016@btinternet.com, speak to any of the Bleasby Local History Society Committee members, or call me on 01636 830661.

Ken Ogilvie

CHURCH NEWS APRIL

Lent Lunches

We have enjoyed meeting for soup lunches at various venues on Saturdays in Lent. Fifteen or so have gathered for what is intended to be a simple meal - not starvation rations. Donations are made to the host's chosen charity, about £100 being raised each week. If you haven't been to one yet, make a mental note for next year and enjoy some lively conversation and the knowledge that worthwhile charities are benefitting from the generosity of hosts and guests.

Lent Course

Each Monday groups have met in three of the villages in the West Trent Group to discuss various aspects of the film "The Theory of Everything", the course title being The Mystery of Everything. It is fascinating to listen to the differing viewpoints and experiences of other participants; and there has been some lively discussion. Looking at the backgrounds of the group on any given week, scientists, medics, lawyers, teachers, business people and those whose work has been largely focussed on the home and/ or voluntary sector, it is not surprising that there have been a wide range of views expressed. Fresh thinking from the "thirty somethings" and the wisdom of experience from the "eighty-somethings" adds to the mix. It is interesting sometimes to just sit and listen, which of course one can. Going back to the film at the end of the course might offer a few surprises.

Parish Church Council and Group Wardens and Readers Meetings

Both these bodies meet regularly to deal with routine administrative matters and to discuss policy and mission. **The Annual Parish Church Meeting will be held on Thursday 28th April at 7.30 pm.** This is an open meeting when the PCC presents reports and accounts for the previous year and summarises its achievements.

The wardens and readers of the seven churches have become an effective working group and relationships have flourished since the group was constituted five years ago when two smaller groups were amalgamated under one priest in charge. The life and worship of individual churches has been enriched as a result.

Easter Services

Delivery of Bleasby News might just be in time to remind you that Revd. Phil will be taking a **Holy Communion** service at Bleasby on Easter Day. Please note this does not follow the usual pattern for the first Sunday of the month but will be at **9am**.

Church and School

Revd. Phil will be in school on three afternoons at the end of term to talk to children in Key stage 2 about Easter. The youngest children will by then have been down to church to learn how we celebrate significant events such as baptism and marriage. We look forward to seeing the children on this occasion and also for their end of term service.

Churchyard

The graveyard always looks good at this time of the year when the spring bulbs flower. It is looking particularly beautiful just now largely because of the efforts of Alison Sutherland, working with Nathan Richardson and William Dove as a step towards their Duke of Edinburgh Silver Awards. Many hours of weeding the car park,

removing ivy from graves and trees, replanting the trough with primulas and various other jobs have resulted in significant improvements. Our thanks to all of them.

Rachael Andrew and Diana Temperley

RECYCLING - THE NOTTINGHAMSHIRE MATERIALS RECOVERY FACILITY

Do you know what happens at the MRF in Mansfield? I didn't before going on an organised tour with the U3A on 8th February. What an eye-opener!

The MRF has a contract with Nottinghamshire County Council, and is operated by Veolia, to sort up to 85,000 tonnes of recyclable items a year from households in all seven Borough and District Councils in Nottinghamshire and is key to ensuring that the county achieves its target of 52% household recycling and composting in the county by 2020.

The facility is enormous, and very noisy, so on a visit ear defenders are a must, as well as hard hats and high vis jackets. There is a huge amount of machinery as well as teams of staff sorting out the many items which are put in our grey bins. Once sorted they are baled and sent on to manufacturers and re-processors to be made into new items.

On our visit, before visiting the facility itself, we were divided into two groups and given a bag of household items to sort into what could be recycled and what could not. Although not one hundred percent correct, we were not far off. If anything, we were all somewhat over-conscientious! There are so many items which we think can be recycled and were rather disappointed to find they had to go into the general rubbish bin.

We all know that all sorts of paper and cardboard can go into the grey bin, but did you know that you shouldn't put a pizza box in if it has been contaminated in any way from a source of food? Likewise, yoghurt pots and margarine tubs are fine, but the lids are not. Drinks bottles such as for milk and squash are fine, but no lids. No plastic food and ready meal trays, and no wrappers or juice carton boxes.

MRFs in other parts of the country will take items which the Notts MRF cannot, so there is a lot of confusion which makes it difficult to know what to do. Why not arrange to go on a visit to the Mansfield MRF and see for yourself how it all works? Our tour guide was excellent and would welcome bookings. They can be contacted at nottsenquiries@veolia.co.uk or on 0203 567 4370. They produce some excellent leaflets and even a recipe book entitled Love your Leftovers!!

Happy Recycling!

Alison Salter

BLEASBY LOCAL HISTORY SOCIETY

Our 2015/2016 programme included talks from some old friends and some speakers new to us. All provided us with most interesting presentations and it was pleasing to see the numbers attending well up on last year.

In January 2016 we held our Annual Supper with members providing as usual a wide variety of delicious courses enjoyed by everyone including our two entertainers, Dave Brookes and Michael Whysall aka The Woolley Tellers. These two accomplished story tellers amused us with stories from their youth in and around Nottingham. All in all a very enjoyable evening with which to start the year. In February we had a very detailed account of the history and the latest archaeological developments of the Burgage in Southwell by our Thurgarton neighbour, Ellis Morgan. The 2015 dig produced over 6000 items (many of them fragments) and there will be further excavations this year when there may be opportunities for members to give some 'hands on' assistance." The Society's AGM took place on 22nd March and, following the usual short business section, was a convivial evening sharing news, views, ideas and a glass of wine and we also had the opportunity to hear more about the Great Central Railway Steam Train Excursion Special.

After the AGM our new programme commences with a talk entitled "The 1916 Zeppelin Raid", the speaker being Stephen Flinders. This will be on Tuesday 26th April at 7.30pm and on May Tuesday 24th May the subject is "Cycling for Churches" given by Ed Compton.

Come along to any of our meetings – free to members and with a small fee for visitors – you will be most welcome.

The Society is also supporting and assisting in the plans for a memorial to the three World War II aircraft crashes which you will read more about elsewhere in this issue of Bleasby News. Please give your support to the memorial fund-raising projects – personally I am really looking forward to taking that trip on the Steam Train in August – let's make it a most successful and enjoyable day.

Jim Kelsey, Chair

CONDOLENCES

We offer our condolences to the families of Margaret Ball and Ann Border both of whom died in February. Margaret's daughter, Sue, will be writing about her mother's life in our next edition.

NOTTINGHAMSHIRE COUNTY COUNCIL – RECYCLING CENTRE SERVICE CHANGES FOR 2016

From 1st April 2016 Nottinghamshire County Council will be making changes to their network of recycling centres, and this will include a registration scheme for residents. The County Council is aware of cross-border usage, and it is hoped that this scheme will address this issue. Residents of the county who wish to use any of the 12 sites throughout the county will be required to register their vehicles (up to two per household) by completing an on-line (or telephone) application.

Full details of the changes will be available on the County Council website in the next few weeks, and the scheme will be rigorously enforced from September 2016 – anyone not registered by then will be refused access to deposit waste.

Lynda Ogilvie

FOOTSTEPS



Helping Bleasby School
move Forward

BLEASBY SCHOOL FRIENDS ASSOCIATION NEWS

Quiz Night- The evening was a huge success raising an enormous £1400. Our special Thanks go to event sponsor Chilli Bobs of Rolleston and to our excellent quiz master Mark Goldby. Congratulations to the winning team 'The Escapees' - they are the ones to beat next year!

School Wish list- We are working hard with school staff to put the money you raise to good use and fulfill the items on the school wish list. So far this year the BSFA have purchased or agreed funds for the following;

- £135 for 25 computer mice
- £100 on new books
- £1000 on sports kit
- £60 on apps to link the new ipads to the white boards.
- £799 for the Pantomime in 2017
- £799 for an M&M production and afternoon workshop.

Mother's Day fundraiser - The mugs for Mothers Day looked fantastic and raised £357. Thank you to the children and staff of Bleasby School for producing such lovely artwork and to the mums and dads for being good sports and taking part in this 'surprise' gift.

Fill the Bin - Thank you to everyone who bought along donations to 'fill the Bin' on February 26th. The bin is located at the end of the school drive and is a great fundraiser for Bleasby School so we really appreciate support from the community. We welcome clothing, towels, sheets, blankets, curtains and paired shoes and donations can be made at any time.

School Diary

18th April - BSFA Meeting, Waggon & Horses, 8pm

18th June - Bleasby Summer Fair, Glebe Field, from 1pm

24th June - Sponsored Bouncathon, Bleasby School

21st July - Leavers' Disco, Rolleston Village Hall

17th September - Table top sale, Bleasby School, 10-12am £5 per table (provided)

For further information on our upcoming events please contact

Nicola.Bennett@uk.experian.com

BLEASBY SCHOOL 1916

For many months we have been reminded of the horrors of the First World War – also called the Great War, the war to end all wars. We have seen films and TV documentaries, and read letters, memoirs, novels, newspaper and magazine articles, and thus have lived through other people's eyes the horrific experiences of life and death on the front line, and have been reminded of the effects of war on the families at home. But what was happening in Bleasby? and, in particular, at Bleasby School one hundred years ago? I read through the Minute Book of the Managers, and was rather disappointed at the small amount of information given.

The Log Book starts on 5th November 1915, with a list of the current Managers, and a reminder of the rules governing the appointment of managers. Several points are interesting – 2 of the Managers, Mr E Trueman and Mr J Carlin, both had descendants living in the village until comparatively recently. Miss Carlin lived at The Old Willows until 1976, and Roger Trueman carried on his father's building business until he moved from the village. (One of our drain covers carries E E Trueman's name on it!) The election of Managers allowed "the subscribers of 2/6 upwards to appoint two Managers" and they and the two Churchwardens "must be churchmen" and were called Foundation Managers. The Vicar was, and still is, an ex-officio Manager (Governor nowadays). Who were the subscribers?

The November meeting also recorded that the Vicar was appointed for a three-year term as the representative on the Board of Education, and that the Correspondent (an office probably now known as Secretary) should act on the County Council's architect Mr Maggs' advice and get an estimate for a simple ventilator of wood for the hopper ventilator. The Head Teacher, Mrs Reynolds, had submitted the Quarterly Report on block paper as she had run out of forms, and was told to copy it out on forms to be obtained by the Correspondent, and then forward them to Shire Hall. The Vicar and churchwardens applied for a loan of £12-10-0 to pay for a new church boiler, "as it was difficult to obtain the money from the parishioners at this particular time as so many calls were being made on the people through this terrible war". The application was granted, and the interest to be set at 3% p.a. Vicar and Churchwardens were made responsible for the loan. Incidentally, this was one of only two direct references made to the war in the Minute Book during 1915/16.

In February 1916 the Churchwardens thanked the Managers for the offer of the loan, but said it was no longer needed as sufficient subscriptions had been received. (Just imagine – a new boiler for £12-10! What is today's equivalent?) An unusual entry – the Correspondent was to ask the Education Committee if three Belgian children could start school in the village – I can find no further reference to this. The Mistress's salary of £85 was deemed "quite sufficient for so small a school – 19 on the books" but the Managers accepted that it was the right of the Education Committee "to work salaries to scale" and the lucky Mrs Reynolds was granted a pay rise of £5 to take effect from 1st April. The Correspondent, Mr Carlin, resigned owing to business arrangements, and the Vicar was asked to take on the position. However, at the May meeting, he said he could not take this office, and Mr Oldershaw was appointed at a salary of £1-1-0 p.a. Mrs Reynolds' request for a new mat was refused – "the Managers thought the present one would suffice until latter end of year". Mr Carlin wrote a cheque to himself for 9s-4p, "being postages etc. due to him from 1910 to 1916", and handed over the balance in hand at the Bank of £10-7-0 to the new Correspondent. The account was to be transferred to the same bank (Union of London and Smith's Bank) in Southwell. Is this now the Nat West?

In August, Mr Trueman was given the work of altering the Pit Closets to Pan Closets. I don't know the details of either, but I'm happy to say they are no longer in our Village Hall! The School Clock was to be repaired, and it was proposed that "the School be insured against Zeppelin attacks with the Ecclesiastical Insurance Co Ltd., to be insured for £300". Our Parish Church is insured with this firm – but as far as I am aware, Zeppelin attacks are not mentioned in the policy.

At the meeting of 18th October 1916, a proposal was accepted "that 12 Prayer Books be ordered" – presumably for use in the school. Pail Closets had apparently been installed (does anyone know the subtle difference between Pan and Pail?), as at this last meeting of the year, on 18th October, William Kemp was appointed to empty the Pail Closets at 40 shillings p.a.

When I was a School Governor, I would frequently inspect the toilets – but I never had the joy of inspecting Pail Closets, as did the Managers at that final meeting of 1916.

Diana Temperley

"FREE TO A GOOD HOME AND/OR TO BORROW"

We are considering a regular column for this in Bleasby News. We have already been offered baby equipment - high chair, cot, buggy etc, for occasional loan, to grandparents perhaps. Let the editors know if you would like to advertise items you no longer need or if you wish to borrow anything.

BLEASBY WOMEN'S INSTITUTE

Since our report in February we have had two interesting speakers whose subjects have been “Why are the Japanese people so healthy?” and “Ploughing Adventures in Haiti.” We thought we had a good idea why the Japanese people lived long healthy lives and this was confirmed by the information we were given about diets. What we found more surprising is that this no longer holds for the current generation of young people whose adoption of a more western style diet, including fast food, has brought with it the weight and health problems we in the west have been experiencing for some time.

On a more optimistic note we learnt what a British Charity called Summer Crest is doing to support the restoration work following the devastating earthquake in Haiti. The charity has a farming background, hence the title of the talk. Initially the gift of a tractor kick-started a small scale revolution in farming methods. Further help and training has followed with a 10 year commitment to continue the support. Along the way funds were found to rebuild a school. Although there remain substantial problems and high levels of unemployment, the outlook is positive.

There have been plenty of opportunities for WI members to be involved in social activities such as lunch outings, trips to the theatre and the cinema in Newark and, at group level, opportunities to take part in a range of sports, gardening and craft activities. We thank the seven members who joined Monica to “litter pick for the Queen” a couple of weeks ago. We collected more than six bags of rubbish from a fairly small area of the village – it shows how much people throw or drop so carelessly!

The next book group meeting will be held at the Waggon at 2.15 on 1st April to discuss “A Spool of Blue Thread”. Nobody paints a more honest and sympathetic picture of family life in the USA than Ann Tyler. All the hopes, fears, aspirations and disappointments are there as the story of four generations of the Whitshank family unfolds.

Can we ask you to support Christine Sharpe’s coffee morning on 15th April at the Village Hall which is in support of NSPCC and Childline.

You are welcome to come as a visitor to our meetings before any commitment to join is made.

Rachael Andrew



Bleasby Diary of Events

Date	Time	Event	Location
Sunday 27 th March	9am	Easter Sunday Holy Communion	St Mary's
Monday 28 th March	Noon	Easter Egg Hunt followed by barbecue at W&H	Glebe Field
Saturday 2 nd April	9.30am	Jubilee Ponds Working Party	JPs
Sunday 3 rd April	10.30am	Service of Morning Prayer	St Mary's
Sunday 10 th April	11am	Service of Holy Communion	St Mary's
Monday 11 th April	7.30pm	Meeting of Bleasby Parish Council	Village Hall
Tuesday 12 th April	9.30am	Jubilee Ponds Working Party	JPs
Friday 15 th April	10am	Coffee morning in aid of NSPCC and Childline	Village Hall
Saturday 16 th April	7pm	Spring Concert by the Trent Churches Choir	St Peter's Thurgarton
Sunday 17 th April	9.30am	Jubilee Ponds Working Party	JPs
Sunday 17 th April	10.30am	Benefice Service of Holy Communion	St Peter's Thurgarton
Monday 18 th April		School term starts	
Tuesday 19 th April	7.30pm	Bleasby WI Annual Business Meeting	Village Hall
Thursday 21 st April		Queen Elizabeth's 90 th Birthday	
Sunday 24 th April		Celebration of the Queen's Birthday and St George's Day	Glebe Field
Tuesday 26 th April	7.30pm	Meeting of BLHS with Stephen Flinders on the 1916 Zeppelin Raid	Village Hall
Wednesday 27 th April	7.30pm	Annual Parish Meeting - all electors welcome	Village Hall

Sunday 1 st May	10.30am	Service of Morning Prayer	St Mary's
Monday 2 nd May	3pm	Maypole Dancing and Bake-Off	Glebe Field
Wednesday 4 th May	7.30pm	Annual Meeting of the Village Hall Committee	Village Hall
Thursday 5 th May	7am to 10pm	Police and Crime Commissioner election	Village Hall
Saturday 7 th May	9.30am	Jubilee Ponds Working Party	JPs
Saturday 7 th May	7.30pm	Southwell Choral Society sings Faure's Requiem	Southwell Minster
Monday 9 th May	7.30pm	Meeting of Bleasby Parish Council	Village Hall
Tuesday 10 th May	9.30am	Jubilee Ponds Working Party	JPs
Sunday 15 th May	10.30am	Benefice Service of Holy Communion - Pentecost	St Mary's
Monday 16 th May		Deadline for Bleasby News items	
Tuesday 17 th May	7.30pm	Meeting of Bleasby WI including Resolutions	Village Hall
Sunday 22 nd May*	9.30am	Jubilee Ponds Working Party	JPs
Sunday 22 nd May	9am	Service of Holy Communion	St Mary's
Tuesday 24 th May	7.30pm	Meeting of BLHS with Ed Compton on Cycling for Churches	Village Hall
Sunday 29 th May	12 noon	Benefice Service on Tractor Rally Day	Hoveringham
Monday 30 th May		Spring Bank Holiday and start of school half-term	
Saturday 18 th June	From 1pm	Bleasby School Fair	Glebe Field

*The last Jubilee Ponds Working Party of these months will be on 22nd May due to the usual day being Whit Sunday.

NJN JOINERY

Phone: Nigel Newcombe
on
01636 525506
or
Mobile: 07837 235427

ALL TYPES OF JOINERY
AND
MAINTENANCE WORK
UNDERTAKEN



HYDEBARKER

WORLDWIDE TRAVEL & ADVENTURE



**TOP OF THE
NEW ZEALAND
SPECIALIST**

Tel: 01636 816 262

www.hbtravel.co.uk | 1 King Street, Southwell



ABTA
AFFILIATED

April Church Services in the West Trent Group

(HC = Holy Communion MP = Morning Prayer EP = Evening Prayer)

April	Bleasby	Halloughton	Hoveringh'm	Morton	Rolleston	Thurgarton	Upton
Sunday 3 rd	10.30 MP		6pm HC	10.30 HC	10.30 MP	10.30 HC	9am HC
Tuesday 5 th							10.00 HC
Sunday 10 th	11.00 HC		9am MP	10.30 All Age	9.30 HC	10.30 MP	10.30 MP
Sunday 17 th						10.30 Benefice HC	
Sunday 24 th		9am HC	10.30 All Age	10.30 HC	10.30 All Age	10.30 with Methodists	10.30 MP

May Church Services in the West Trent Group

May	Bleasby	Halloughton	Hoveringham	Morton	Rolleston	Thurgarton	Upton
Sunday 1 st	10.30 MP		6pm EP	9am MP	10.30 MP	10.30 All Age	10.30 HC
Sunday 8 th		6pm EP	9.30 HC	10.30 All Age	11am HC	10.30 HC	10.30 MP
Tuesday 10 th							10am HC
Sunday 15 th Pentecost	10.30 HC Benefice with choir						
Thursday 19 th							4pm Zip Bam Boo
Sunday 22 nd	9am HC		10.30 All Age	10.30 HC	10.30 All Age	10.30 with Methodists	10.30 MP
Sunday 29 th			12 Benefice Rally Service				



JUBILEE PONDS AND NATURE NOTES – MID MARCH

Inviting the Neighbours In!

An early spring and the close approach of the Spring Equinox has sent our garden birds into a flurry of courting activity. Robins and blackbirds are already paired and are nest building in suitable ivy-clad areas of our gardens, jackdaws are investigating our chimney stacks and our tawny owls are probably already brooding their eggs in natural tree hollows or in suitably sited and discreet nest boxes in our larger village gardens.

We were urged by the RSPB and BTO (British Trust for Ornithology) to start putting up our nestboxes on February 14th, but it is not too late to start now to entice the later – and often younger – pairs of such birds as blue tit and great tit which will provide us with weeks of engrossing interest and joy. Even if they are not occupied for nesting this year, they will become important roosting places and will already be earmarked for next year!

As our countryside has to contend with increasing agricultural demand, nesting sites in hedgerows, hedgerow trees, copses and meadows become much scarcer and our own homes become so ‘hermetically sealed’ that there isn’t a nook or crevice for the declining starling, house sparrow, swift or bat to find a home. It is really important therefore for even such previously common birds (and bats) to be able to share a home with us by fixing appropriate nestboxes under our eaves or on our walls.

Many birds are successfully adapting to artificial nest sites – even such specialists as house martins, swallows and swifts – but the standard open-fronted or hole entrance nestboxes will serve many species and will almost certainly attract birds to your garden. The BTO has an excellent Nest Box Guide for more detailed information should you want to make one yourself or for particular birds that frequent your garden, but most garden centres now provide a good range of specifically designed boxes to suit your needs. Please avoid, however, any that are not made of wood or of “woodcrete” and those that have perches where squirrels, cats and weasels could find a handy nestling cafeteria!

The Jubilee Ponds surrounds are beginning to take on their spring attire and the gorse is providing a sunny blaze of colour; whilst the starry blackthorn flowers in our all-important nesting scrub are looking their starkest best. The long-tailed tits love to nest in either of these shrubs so the Ponds Management Plan ensures that this transitory habitat of scrub is always retained in some form in some areas of the site particularly for these charming birds, along with many other scrub nesting species.

Now that the paths have dried, a walk around the Ponds is an elevating and therapeutic experience that most of us can enjoy – wheelchair access is possible for a fine viewing point close to the entrance. When you do take your stroll around the Ponds, remember that coot, moorhen and great crested grebe nest along the margins and are therefore very vulnerable to disturbance and that they have not got a nesting box to keep them safe!

Peter Cast

FLOOD ACTION GROUP – WATER AT THE END OF THE TUNNEL?

Following our article in the last edition of Bleasby News urging you all to avoid putting anything down sinks and toilets other than waste water and 'digestive wastes', we have to report a sewerage system failure that occurred following the heavy rainfall during the night of 8th/9th March. This time the problems were most apparent along Gypsy Lane and the end of Hawthorn Close with excess water escaping the system and filling adjacent ditches and causing shallow flooding on parts of Gypsy Lane. People experienced disturbing noises as sewage started backing up and the worst affected experienced the inconvenience of limited toilet facilities.

Severn Trent Water responded to numerous calls and workers sent out concluded that the system had been overloaded by the downpour, aggravated by the fact that there seemed to be the same kind of consequent failure/shortcoming of both the pump at the end of Gypsy Lane and the main one by the Waggon and Horses carpark.

All the drains and dykes were close to full on the morning of Wednesday 9th, but fortunately the river was fairly low, only rising significantly the following day as all dykes and becks emptied into the Trent. Had the Trent been higher the flooding would have been more serious. What has to be realised is that we receive the sewage (as well as surface water during heavy rain and floods) from Gonalston, Hoveringham and Thurgarton before then pumping it on to Morton. Flooding at Thurgarton Beck, therefore, raises the risk of the overwhelming of our own sewerage system.

At March's monthly meeting of the Parish Council, councillors agreed that a proper survey and assessment of our sewerage system should be sought from Severn Trent and some remedy thereby found for an increasingly worrying state of affairs.

If you experience any problems with your drainage, please let me, or one of the other members of BFAG, know about it.

Elaine France, Flood Action Group



SAFER NEIGHBOURHOOD GROUP

Watch out – there are thieves about!

Have you ever seen something suspicious? Someone trying car door handles as they progress along the street or looking furtively around property and being in unlikely places? If so, did you dial 999? Or choose not to because: it did not merit an emergency call: you would be wasting police time: someone else would have reported it: the police would not respond anyway: you were more likely to cause an unnecessary panic: you might get into trouble yourself. If so, next time, dial 999 and possibly save someone a lot of distress!

This was the message being given at our March SNG meeting of all the local parish representatives (and our District and County Councillors) by our local Police Community Support Officer who assured us that they would rather follow up an innocent occurrence that hear about a crime after it had occurred!

The trained 999 call operatives will judge the circumstances being described and advise the police accordingly. A 101 call will take too long for effective action to be taken. Please remember to record a good description of the person, their clothing, any particularly obvious characteristic, items that they may be carrying and the registration of any vehicle likely to be used by them.

Good neighbourliness begets a safer neighbourhood!

Derek Whitman & Peter Cast

D. J. Hall Funeral Directors

Southwell & District Funeral Service

Your local independent funeral directors offering a
personal and caring service

Verne House

62, King Street

Southwell

TEL: 01636 812481

EMAIL: sdehall2000@btconnect.com

WEB: www.djhallfuneraldirectors.co.uk

ROB BROWN LTD PLUMBING AND HEATING

MOBILE 07973890499

NOW BASED IN BILSTHORPE

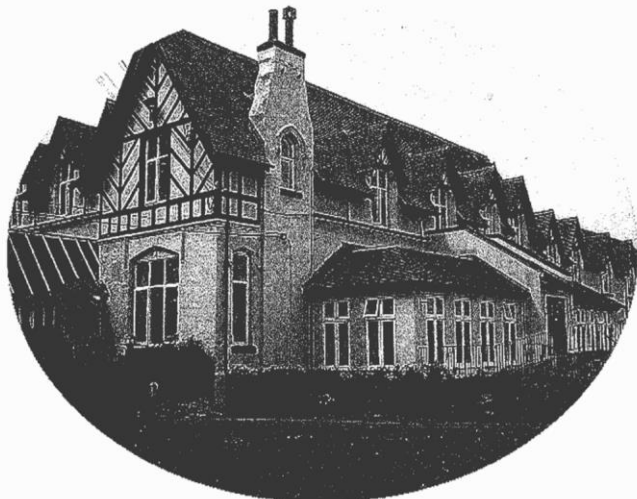
email robinb9@gmail.com
more than 20 years experience

INSTALLATION SERVICE & REPAIRS
OF DOMESTIC GAS APPLIANCES &
HEATING & HOT WATER SYSTEMS

ALL PLUMBING WORK UNDERTAKEN
SMALL BUILDING WORKS
AND PROPERTY REPAIRS
ELECTRICAL REPAIRS

DO YOU RENT PROPERTY?
WE DO LANDLORD,S GAS CERTIFICATES
MAINS PRESSURE HOT WATER
Fully insured /no call out fee





Hazelford

The Provider of Quality Care

Our home is situated in a beautiful location with open views of the river and surrounding countryside. With lovely gardens and an abundance of wildlife, this makes Hazelford a delightful location for our residents, to some of whom we offer a short break; for others we become their home.

We pride ourselves in offering a home from home environment with an excellent ethos whereby our residents are involved in the decisions we take. We focus on our residents' aspirations, ideas, views and suggestions.

We have a person centred approach to the care of the residents: this approach is vital to ensure the best possible outcome and wellbeing.

Dementia care is a specialist area: we ensure with sensitivity that the resident is supported continually with person centred care planning, reinforcing daily the aspects of their lives they enjoy to ensure wellbeing and pleasures on a daily basis as, sadly, the previous day may be forgotten.

Our aim is to offer stimulating activities, with one to one time for those who may have dementia: we specialise in this area and our approaches create a relaxed harmonious environment for all.

Our bedrooms are large with views over the countryside and offer a choice of colour and furnishings, personalising them to suit our residents' preferences and choice.

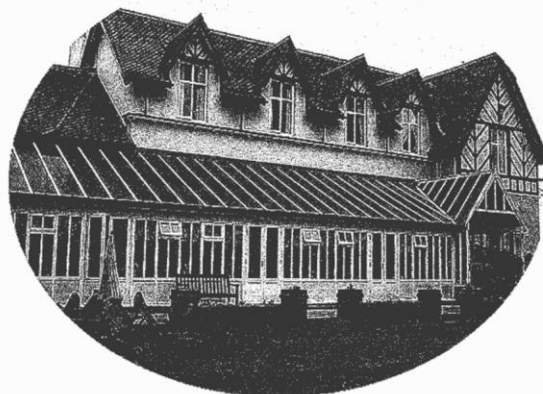
Please feel able to visit our home at any time – a warm welcome awaits you. We encourage families to also have an input into the plans the home may make. We hold family and friends of the home evenings.

With spring and summer comes along a plan of social events: for the summer an annual garden party, summer fair and schedule of outings to various venues.

HAZELFORD

**Boat Lane
Bleasby
Nottingham
NG14 7FT**

Tel: 01636 830207





ACADEME ROOFING

Quality Roofing Services



NOTTINGHAM'S NUMBER 1 ROOFING PROFESSIONALS

CALL OUR OFFICE ON:
0115 950 6444

“Our reputation is built
on **QUALITY**, first class
customer service, reliability
and professionalism”



Business Directory
Registered Member



LOCAL AUTHORITY APPROVED
ROOFING CONTRACTORS

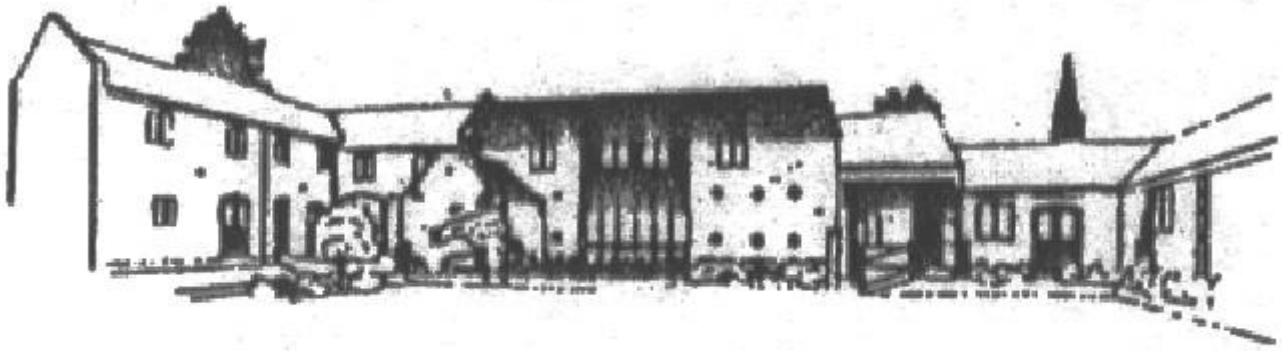
**All Areas of Nottinghamshire covered
CALL TODAY!**

- Slate & Tile Roofs
- Single Ply Membranes
- Flat Roofs
- Guttering, Soffits and Fascias
- Chimneys Re-Pointed
- Industrial Roofs/Domestic
- Specialists in all lead work
- Re-roofs & New Roofs

OVER 30 YEARS EXPERIENCE • FREE ESTIMATES

www.academeroofing.co.uk • office@academeroofing.co.uk

23 • Little Tennis Street • Colwick • Nottingham NG2 4EL



THE BYARS

A small, family owned and managed, independent Care Home situated amidst the rural landscape of the Trent Valley

The highest quality care in the highest quality accommodation

Our home offers long and short term care for the elderly

Viewing welcomed. Further details on request

THE BYARS
· CAYTHORPE · NR. LOWDHAM ·
NOTTINGHAMSHIRE · NG14 7EB

REGISTERED NURSING HOME

Tel: 0115 9663981

Your local Hearing Care Specialists

0115 961 8351

FREE HEARING CHECKS

EAR WAX REMOVAL

TINNITUS SUPPORT

HOME VISITS

Whether you are looking into hearing issues for the first time or are struggling with your existing hearing aids then **Correct Hearing can help.**

We are a family run and owned independent practice, with over 30 years experience.

Call today for an informal chat or to request your FREE Hearing Guide 0800 368 47 47



Sarah Vokes



Damian Eyre

Web: www.correcthearing.co.uk

Email: info@correcthearing.co.uk

242 Oakdale Road, Carlton, Notts, NG4 1AD

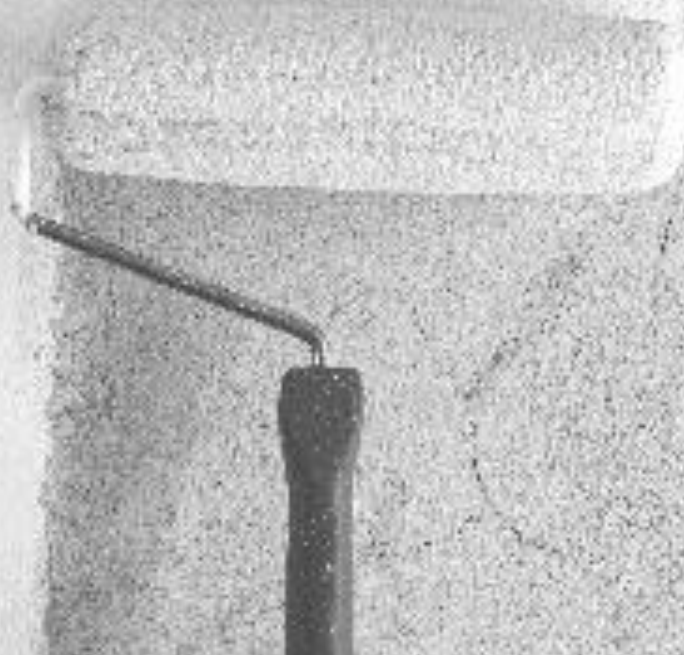
Ben Morgan

Painting & Decorating Services

T: 07775 888851

E: ben@zeboit.com

**Call for a free no obligation quotation
References available**





We have Ballet, Modern and Tap
Dance Classes in Fiskerton for all
ages!

Why not let your Precious Princess or Playful Pirate take their
first steps in to the Magical World of Ballet! With our Princess
and Pirate Ballet class for ages 3 and over!

We have classes for adults too! Zumba and
Tap
For more information please visit our
website



www.attitudedanceschool.com
info@attitudedanceschool.com
07974 745740



Come and join us
for



with



Wednesday 7.30 - 8.15pm
At The Arthur Radford Hall
Fiskerton cum Morton

For more information visit www.attitudedanceschool.com
Or call 07974 745740

MORE EXTRACTS FROM THE DIARY OF JOHN HOLMES OF THE OLD HOUSE

Written in 1816

"Mr Robert K Kelham Esq came with his family to reside at the Hall (who purchased it of Mr Falkner) the beginning of July this summer. He added considerable additions to it, by building a housekeepers room, wash-house etc.

The church began to be repaired on the 14th of May, 1816, and was opened again for divine service on Sunday Sep 22nd following. The outsides was drawn and sand-dashed; the tower and church slated with capitol king-post roofs; also a new porch at the entrance; the windows new glazed and enlarged, the interior raised and new pewed throughout. Also a new pulpit and door; a large fane was affixed at the top of the tower made by William Buck, the village smith, with the date of 1816 thereon."

[William Buck lived at what was called in his time Fidler Close, later Sycamore House, now Dale House. It would have been his forge which was recently demolished and a gate lost which was likely to have been made by him.]

"At Newark Michelmas Sessions came on for trial, between Bleasby and Upton, concerning the settlement of a pauper (Thos Dailey). Mr Parsons of Nottingham pleaded the cause of Bleasby and Mr Barrow of Southwell for that of Upton. The contest was determined in favour of Bleasby. The expenses on the part of Bleasby amounted to the sum of £33.17s.1d. The house of Thos Welch of Weldon in the parish of Southwell (about two miles from this village) was broke into by seven villains on the night of Oct 8th 1816 and robbed of goods and money to the amount of nearly forty pounds, and got clear off with their booty. John Hervey of Notown built a new dairy, this summer and Mr Horspool, at Hazleford-ferry a new barn. The summer was remarkable wet; the hay in general got very bad, and the corn greatly damaged, by the long and constant rains; so that it was the latter end of Nov before the harvest was finished. The beans was almost rotten in the fields and a quantity of the barley sprouted. A small flood happened in Nov and another on the 17th of December."

[No Safer Neighbourhood then! And plenty of bad weather in the "year without a summer" as 1816 was known.]



The Tree Fellers of Bleasby

Tree Felling

Tree Pruning

Hedge Cutting

Tree Dismantling

Garden Services



We specialise in the safe and affordable removal and pruning of trees and shrubs.

Call for a free quotation from a qualified arborist.

Free Quotations contact Paul Wood

Phone: 07956 905287 or 01773 535 886

Email: info@thetreefellers.co.uk

ADVERTISING IN BLEASBY NEWS

Want to advertise your event or service and support your village at the same time?

What about an advert in Bleasby News – now more informative than ever and delivered to every household in Bleasby, Goverton and Gibsmere six times a year

Contact Rachael Andrew on 830296 or Barbara Cast on 830284

	Full page	Half page
1 issue	£20	£12
6 issues	£80	£60

If you have contacted or used one of the Advertisers in Bleasby News, please let them know where you heard about them!

Why not hire the village hall for your event?

Our splendid village hall is available for people to use for such things as fund-raising events, classes, family and children's parties etc.

The hall is equipped with plenty of modern tables and chairs plus lots of crockery and cutlery.

The cutlery, crockery (including loads of mugs), wine and champagne glasses and equipment including electric and thermos tea urns can also be hired separately to the hall and there are also about forty plastic chairs and some tables for hire which can be used out of doors. Hire rates available from contact below.

The hall costs £7.50 per hour to hire, fully inclusive. For parties there is a deposit to pay.

Please ring Alison Salter on 830373 for further information.



Whilst every effort is made to ensure accuracy, the editorial team cannot accept responsibility for errors or omissions in articles appearing in Bleasby News. The views expressed in Bleasby News are not necessarily those of the Editors nor of Bleasby Parish Council. Bleasby News is distributed by local volunteers to whom we remain very grateful. Printed by Toot Hill School Reprographics

BLEASBY WWII AIRCREW MEMORIAL FUND



Saturday 20th August, 2016 Great Central Railway Steam Train Excursion Special

Five Course Meal served on train in classic Pullman style

Children's meals, and special diet options available

Adult ticket £75 (includes donation £20); Child ticket £35

Cab Rides between stations, Drinks, if required - extra

Enquiries email: bleasbybcms2016@btinternet.com

THE WAGGON & HORSES

GYPSY LANE, BLEASBY



YOUR LOCAL PUB!

LIZ AND IAN

830283 07930 089758

waggonbleasby.co.uk