

BLEASBY NEWS



JUBILEE PONDS MEADOW FLOWERS

JUNE 2019



Bleasby Women's Institute's entry to the County Show – what a super depiction of Alice in Wonderland!

WELCOME TO THE JUNE EDITION OF BLEASBY NEWS

Summer: the countryside is looking at its greenest and is abundant with blossom. It is appropriate then that our thoughts turn to gardens, in particular the Open Gardens and Church event that is to take place on Sunday, June 9th. We look forward to welcoming visitors to our village which we hope will be looking at its best, thanks to the gardeners of the ten gardens who have put so much work into making their gardens attractive and interesting and bringing their differing ideas to fruition. The Church is also going to be subject to the skilful hands of our flower-arrangers, so do take the opportunity to visit. Thanks also to those residents who respond to the Events Group's encouragement to add a bit of floral colour to house frontages or drive entrances. If you have children, or even if you haven't, why not make a point of visiting the school garden to give encouragement to parents, staff and children who have developed and tended it.

Bleasby has a reputation to uphold when it comes to hospitality and tea and cake in the Village Hall will be in the capable hands of the WI and Village Hall Management Committee.

It is a bumper year for local open garden events, so please join in Bleasby's event if you can and encourage your friends and relatives to come too for a very enjoyable afternoon and so we can raise significant amounts for the maintenance of the Village Hall and the Church.

As always we will be pleased to receive all types of articles, pictures, ideas and news etc – send all your items for the August edition by **Monday, 22nd July**, to Rachael at prandrew74@outlook.com or Barbara at barbaracast@btinternet.com

Bleasby News editors, Rachael and Barbara

PARISH COUNCIL REPORT – THE SPIRIT OF COOPERATION AND ENGAGEMENT

As our Parish Plan Questionnaire and Consultation clearly demonstrated, almost everyone who responded is keen to participate in supporting the parish in some way and many are already demonstrating this commitment in practical ways by improving community spirit and quality of life here in Bleasby. Unfortunately the pressures of life and demands on time mean that many are either reluctant or cautious about taking on board too many additional responsibilities but would nevertheless love to help out when needed.

The Parish Council has now been reduced to four members despite great efforts to encourage people to stand for election. Consequently the Council now has to seek ways of maintaining and sustaining the quality of the place where we live and of our facilities here in Bleasby by drawing upon the talent, enthusiasm and availability of parishioners to help the Parish Council achieve this.

At the Annual Parish Meeting the dilemma faced by the shrinking Council was expressed to the twenty or so people present and a strategy was outlined as to how we hope to achieve this – this can be found in the Chair's report in this edition of Bleasby News. Basically we would like to co-opt three parishioners on to the Council for a specified period of time to focus on a specific area of village life. The length of time served could be as short as three months with the focus on some aspect of the Parish Plan of most appeal to the co-optee. This way of working would also allow the individual (whilst mainly focusing on their chosen issue) to be involved in any other matters being considered by the Council and to be eligible to vote on decisions to be made.

Should even a short formal co-option be seen as a step too far at this stage the Council would love you to step forward or accept an invitation to act as a consultant in whatever area of interest or expertise you may have. We already have a number of people happy to serve the community in this way – we would welcome many more across a wide range of village matters.

Our current website and communications 'consultant', Mike Fryer, is looking forward to making contact with people willing to support this critical parish development in a range of ways so that the load can be shared and the talent and enthusiasm to be found in Bleasby can be put to good use. Once the reconstructed parish website is up and running the Council will be able to inform and communicate efficiently and effectively with parishioners and enable a network necessary for us all to make our contribution to the quality of life in the parish in our own chosen way.

We would also like to establish focus groups to come together to make suggestions as to how to best tackle issues that affect the village. There are already a few such groups emerging but more volunteers and 'instigators' would be welcome!

If the above roles seem too much to commit to at this time then a willingness to occasionally throw your lot in with the Village Volunteers would be most appreciated.

The Council does not see itself as any different to the rest of the parish as we are all striving towards the same goal and, by greater and wider participation by residents, we can all work together in harmony.

Peter Cast, Chair of the Parish Council

FROM THE REVD PHIL - IS BUNGOMA CALLING?!

Dear All,

Have you come across the phrase "Walk a mile in another person's moccasins"? Would you like to try it?

Since 2006 a number of people have visited rural western Kenya to attempt to do that under the auspices of 'Bungoma Calling'. We call them 'encounter' groups. The important thing about the visit is not simply how we rich westerners can help rural Kenyans, but rather how can we encounter our sisters and brothers in another culture

for a mutually enriching relationship. The charity we formed is named 'Bungoma Calling' because it seemed that we could hear the invitation from them and ourselves to attempt such an encounter. The road has had its ups and downs naturally. Visitors to Bungoma have said it 'changed their lives' to make the journey. Thirteen years later we are still engaged in developing that relationship.

Would you like to join an 'encounter' visit? I am planning to visit in early October. I invite you to consider joining me. We would stay at the Orphanage and explore the local community. Ask me for details.... Last week we paid for a supply of fresh water for the children following an extended drought and increasing number of cholera cases. But they were more excited by the possibility of a visit from friends and supporters. Strange, but true.

There is a **fund raising walk on 21st July** round the seven churches in our benefice. Perhaps you'd like to join in or support? By increasing our understanding and using our imagination, we can "walk in another person's moccasins". However, if you'd like to do that walk by visiting Bungoma, please call!

Best wishes, The Revd Phil

M: 077 200 100 66. Email: phil_07@btinternet.com.

'New' Benefice website: www.benficeofwesttrent.org

The Revd Phil can be contacted as above or via the administrator for the West Trent Group: Paula Carlin on 07419 176021

PS On Sunday June 9th there is a service in conjunction with the Southwell Folk Festival, at 10.30 Holy Trinity, Rolleston - you are welcome. And there is a Folk Festival concert planned at the church on Friday 7th June...

The phrase 'walk in another's moccasins' originates from a poem by Mary Lathrap in 1895, the first 2 verses of which are:

*Pray, don't find fault with the man that limps,
Or stumbles along the road.
Unless you have worn the moccasins, he wears,
Or stumbled beneath the same load.*

*There may be tears in his soles that hurt
Though hidden away from view.
The burden he bears placed on your back
May cause you to stumble and fall, too.*

CHURCH NEWS

Bleasby School End of Term Service - We were pleased to welcome the children to St Mary's on April 5th for their Easter Service. There were contributions from the school choir and representatives of each class gave their thoughts about the events of Easter.



Sybil Davenport 24th August 1936 - 24th March 2019 -

Those of us who attended the funeral of Sybil Davenport were pleased to have arrived early at St Wilfrid's Church, North Muskham - it was a measure of the affection and respect held by members of the various parishes Sybil had served as deacon and priest over many years that the church was filled beyond its capacity to seat everyone. Representatives of the ministry attending numbered at least nine, including several canons and a bishop. Canon Richard Kirton, well known to many of us in Bleasby, led the service and gave tribute to Sybil in three aspects of her life, early formative years, her love of family and of village life, her primary teaching career before ordination and her subsequent ministry following ordination as deacon, and

then priest. Having served the parish of Thurgarton for many years, it was fitting that Sybil died on the same day as the 14th century canon and mystic, Walter Hilton of Thurgarton Priory. Another cause for celebration was that Sybil had been able to attend the 20th anniversary of the ordination of women in Southwell Minster. As a church we are grateful to Barbara and Richard Kirton for the loving care of Sybil in her years of failing health, for adopting her beloved dog Paddy and for ensuring that the funeral service was a joyful celebration of her life as she had hoped.

Lent Lunches - Thank you to all who supported the Lent Lunches. We raised £587 for charities chosen by hosts over the six weeks. This includes £230 for St Mary's Church, £237 for the Disaster Emergency Committee for Cyclone Idai and £120 for Brain Tumour Research.

Good Friday Walk - We had glorious spring weather for the walk from Upton Church to Hoveringham Church, taking in churches at Rolleston and Morton before lunch in Morton village hall, then Bleasby church and Thurgarton chapel before finishing with tea at Hoveringham. As well as walking the full distance, Rev Phil led a short service of reflection in each church at which we were joined by non-walkers. Fifty-six people and four dogs joined the walk at some point and about twelve managed the entire walk.

Benefice Away Day, "Growing Healthy Churches" - There will be a benefice "Away Day" on Sunday June 30th at Jubilee House, Southwell. We will start with Holy Communion at 11 am, have lunch together, before embarking on an afternoon workshop to assess the health of our seven churches and how to move forward together. We aim to finish by 4pm. Please let wardens know if you would like to come. Lifts are available.

Benefice Walk for St. Dorcas Orphanage, Kenya, Sunday July 21st - We hope to repeat the success of the walk last year when we included all seven churches in the benefice in a 14 mile walk, raising funds for St Dorcas Orphanage. If you would like further information about its work please search for Bungoma Calling on the web. Enquiries about sponsorship are also warmly invited. It is a long way for those of us who are no longer young and agile and takes significant effort! Meet at Upton Church at 8am. There will be break at Halloughton for Holy Communion after passing through Rolleston and Morton: then we continue to Thurgarton and Hoveringham, ending up

footsore and thirsty at the Waggon and Horses at Bleasby, hopefully not soaked to the skin this year and well before closing time!

Diana Temperley and Rachael Andrew, Churchwardens

**Growing Healthy
*Rural Churches***

**Benefice Sunday
Sunday 30th June**

11am service at
Jubilee House, Southwell.

A short Holy Communion followed by the Growing
Healthy *Rural Churches* exercise and including
lunch.

Everyone welcome,
a day to set the future agenda for each church
within the Benefice.



JUBILEE PONDS – TOWARDS A GREEN PEACE

Much focus recently on matters of mental health in the news and media cannot but fail to concentrate the mind on how stress and anxiety have become an increasing part of the modern lifestyle and how we in Bleasby are blessed by being cushioned and calmed by our local countryside. We are particularly blessed in that every one of us can step into our own parish 'piece' of nature within the restful green landscapes of the Jubilee Ponds.

Time was, when only a generation ago, these lakes were green pastures grazed by the sheep and cattle of the Richardsons (long-standing Gibsmere farmers, now of Bob and Monica fame) and the Fosters (long-standing Gibsmere farmers, now of Chris and Liz fame). Chris, as a boy, would every day cross the fields and Holme Dyke to the barn, crew yard and wooden cow sheds (they formerly stood near the grassy triangle adjacent to the Reed Pond) to fetch fresh fodder to feed the family's store cattle there – and, even earlier, to accompany his grandfather in bringing in the milking herd to the milking parlour at their farm where Chris himself could sometimes milk by hand. Originally these fields would have been grazed by their Lincoln Red cattle and later by Friesian and Hereford cross store cattle. Now, under Bleasby Parish Council ownership, areas of grassland have been restored, seeded and mown by Chris during his eight years of service as a parish councillor, helping to produce the Meadow, currently bedecked with ragged robin, bird's foot trefoil, tufted vetch,

sorrel, red clover, buttercups etc, perhaps as he knew it as a boy. A feast for the eye, a source of nectar for our bees and testimony to the labours of many years of input by so many members of the Jubilee Ponds Management Committee.

In this year's round of fast-forwarding seasons not only are our spring flowers early but so is the spawning of the carp in the Ponds where they have formed large breeding shoals in suitable locations a full month ahead of normal – probably due to unseasonal warm water conditions. The Bleasby Carp Syndicate members work hard in conjunction with the Parish Council and local volunteers to help maintain the site for everyone's benefit and they are very important in enabling easy access for villagers by mowing the footpaths, clearing fallen and trees identified as dangerous and clearing the site of unpleasant debris left by a few irresponsible visitors. Without these fishermen the Ponds could become an impenetrable scrubland, lacking views and vistas across the water. They are good neighbours with their own rights on the water and its management, and are fully entitled to have access to the water and its banks, and this we recognise and respect.

Next time you visit the City of Nottingham just see how much green is to be seen and be thankful when you return home to find your own piece of peace!

Peter Cast



**A. Rickett & Son,
Bleasby
Builder & Contractor
Tel: 01636 830468**

COUNTRYSIDE AND FOOTPATHS - NEIGHBOURLY WALKS

Having thoroughly walked our own Bleasby Parish paths in recent months, the Group is now periodically extending its countryside strolls into neighbouring parishes, now having explored the possibilities offered by the parishes of Thurgarton, Hoveringham and Fiskerton. Our April walk took us into the parish of Halloughton which has, historically, been closely associated with Bleasby – for long periods we shared a vicar and servicemen from their community are remembered on Bleasby's war memorial.

This latest venture was in many respects the most enchanting. It was almost as if we were walking into the past ourselves as we became immersed in this quiet backwater, still evoking the spirit of rural life a hundred years ago. A quiet treed churchyard with simple but welcoming church, a manor house with a 13th century stone built tower, numerous unchanged barns and other farm buildings, an open roadside stream, no road markings or kerbstones, no through traffic on its single track main street which served as much as a footpath as a highway. Victorian post box, warning notice from the Justices of the Peace to 'vagrants' and old insurance plates affixed to narrow-bricked buildings – all complete the traditional village scene. And such views as we left the village and circumnavigated the Dumble! – we enjoyed a truly lovely walk.

We have discovered that each parish has its own character and story quite distinct from one another. Thurgarton with its historic priory church dominating the village's character: Hoveringham with its mellowing landscape story of gravel exploitation: Fiskerton with its riverside focus: and, of course, Halloughton still reflecting a continuing history of dairy farming with its consequent traditional hedgerow and pasture and the timeless journeying of cattle daily to and fro between field and milking shed.

Why not join us? Our next walk will venture into Rolleston on the third Sunday in the month as usual, 16th June, and we will meet at Fiskerton riverside parking. Do let us know if you would like a lift – ring Peter on **830284**. Owing to the Bungoma walk taking place on the third Sunday in July, we are planning a midweek walk on Wednesday, July 17th, when we will meet at 2pm by the Chestnut tree at the end of Gypsy Lane and walk some of our own footpaths.

Countryside and Footpaths Group

CLIMATE AND WILDLIFE CRISIS – THERE MUST BE SOMETHING WE CAN DO

Every little helps! Trees and hedges are essential to keeping our air clean – we can plant more. If you have a fence or wall leaving a space under it helps hedgehogs, very much in danger of extinction, which need a big area in which to feed. Planting lots of flowering plants will help our beleaguered bees and other insects – they are pollinators to ensure good crops and also food for other wildlife. Wildflowers are especially beneficial as well as lovely. And get rid of weedkillers and insecticides!

CONGRATULATIONS TO.....

- Alicia Vickers and Daniel Wicks – as newly appointed Head Girl and Head Boy of Bleasby School.
- Annie Cast-Coombs in gaining first place for Year 4 pupils in the Southwell Lions Story-writing Competition for local schools.
- Freddie Polack for winning the overall British Speed Skating championships 2019 in the D section, thereby retaining his British title. He also claimed the Scottish Open trophy. A clean sweep of race victories!
- Bleasby WI for an excellent entry to the County Show and to Monica and Hazel for coming fourth in the Lemon Drizzle Cake competition.
- Bleasby School for being assessed by Ofsted as a “Good School” with “Outstanding” for pupils’ “personal development, behaviour and welfare”.



Alicia Vickers and Daniel Wicks:
new Head Girl and Head Boy
of Bleasby School

BLEASBY WI NEWS

Our April meeting was the Annual Business Meeting when we elect our officers for the coming year. Monica Richardson agreed to be President for another year and the committee gained two new members. It also gave members the opportunity to reflect on all the events we had taken part in during the past twelve months. These included outings to places as diverse as the National Trust's Stoneywell in Leicestershire, the cinema in Newark and the Horspool Retreat in Gibsmere. There were also our regular lunches, Book Group meetings and walks. A particular highlight was when we helped with the hospitality for the visitors to the Dedication of the Aircraft Crews Memorial in September 2018. Hospitality of a different kind is when members assist each week with the lunch club at the Tea Shop, act as “trolley

dollies” at Hazelford by taking some treats for the residents and, of course, the monthly Friendship Coffee Mornings! A very active twelve months. I am sure the next year will be as busy with something for everyone to enjoy.

In May we considered the Resolutions to be put forward at the National Annual Meeting. There were two this year: one relating to the decline in local bus services, a subject close to home as members fought hard to retain the service we have through the village: the second was urging women to realise how important the cervical smear test is. These resolutions will be taken forward to the WI Annual Meeting and, if agreed, will be taken forward as campaigning points for the next year. National WI takes such issues forward to those in authority and press for action to be taken.

Our next meeting on June 18th will include a talk on Armchair Pilates and then in July it will be our annual picnic.

We meet on the 3rd Tuesday of the month at 7.30 in the Village Hall and always welcome new members or visitors.

Sheila Lewis

FLOOD ACTION GROUP

On the afternoon of Friday, 10th May, Flood Action Group members once more met with Ross Marshall of the County Council’s Local Flood Resilience Forum in order to continue to explore ways in which the flooding risk to the parish could be reduced and ameliorated. We were pleased to join this well-qualified and experienced hydrologist in literally walking the parish’s ‘flooding story’ as told on the ground by its drains, dykes, geography and recent history.

On this occasion particular focus was concentrated on those areas of Bleasby that were most vulnerable to pluvial flooding (storm water) and to the after effects of such events which have, in the past, caused particular distress including the consequent contamination of homes by sewage backflow and overflow – several homes having to be evacuated, some for considerable periods, while the damage was rectified.

Water flow – source, direction and current management by our road and field drains – was initially considered and reviewed and then alternative improvements were considered to minimise the initial risks of surge surface water. We were made aware of a number of quite simple and ‘not expensive’ options which would require agreement with land and property owners yet actually having little visual impact with potential great advantage.

We next considered the effect of these floodwater surges from torrential and prolonged rainfall on our aging sewerage system and identified major weaknesses in our existing network. Clearly there were many questions to be asked and answers to be given by Severn Trent Water. Ross was confident that, properly and methodically

approached, specific improvements could be identified, sought and hopefully offered with the cooperation and consideration of all parties.

At our next meeting we will be looking more closely at the many maps at our disposal held locally and by NCC Highways and Severn Trent Water.

Bleasby Flood Action Group

MONT BLANC TREK FOR CHILDREN IN NEED

Dear Friends - many of you may have noticed me walking through the village, sometimes in my bright yellow Pudsey hoodie, but not knowing that I am in training for a trek. I have put together a team to trek Mont Blanc this September. Our team, seven colleagues, are embarking upon an extremely physically demanding challenge for a very worthy cause that supports many initiatives locally in Nottingham via Children In Need.

Those that know me, will know this challenge will be taking me totally out of my comfort zone. I have never embarked upon anything like this before.

The Mont Blanc trek will take place 4th – 8th September 2019 and the challenge is – a four day trek covering over 45 km through Italy, France and Switzerland. The trek will brutally test our stamina, on foot 7 hours each day, navigating steep vertical cliffs, crevassed glaciers, waterfalls and forested tracks.

Why are we doing this? We are passionate about Children in Need and the thousands of projects this charity supports throughout the UK helping disadvantaged children and young people to have a better life.

The charity and the projects they support will fully benefit from our sponsorship. If you could be kind enough to make a donation, no matter how small, to help us reach our £15,000 target we would thoroughly appreciate it. If you would like to support this worthy cause, please follow the link below.

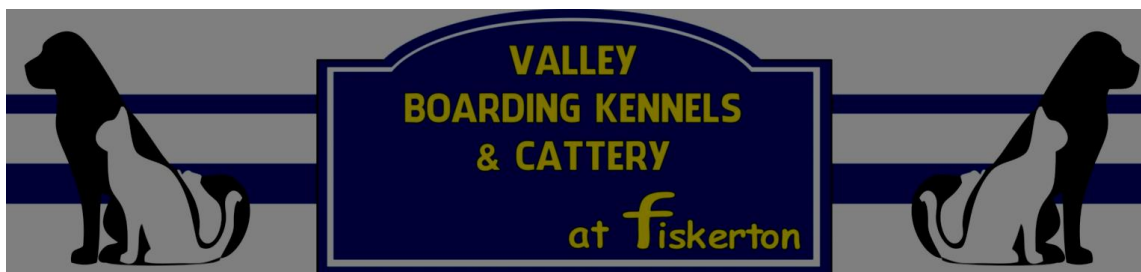
<https://www.justgiving.com/fundraising/badmothertrekkers>

Thank you, Janene Scurfield

STILL HOPING FOR NEW EDITORS!

Following our plea for new editors in the last edition, we were not completely surprised to receive no response! But we would like to hand over to new editors – or maybe a couple of people could share the load with us – Rachael and I would produce three editions a year and the new team the other three. Any offers! Eleven years is quite a long time for this responsibility. Although younger people now rely on electronic communication, there is still a place for a printed newsletter and we do know that many people appreciate Bleasby News.

Barbara 830284 – Rachael 830296



Going Away?

Leave your pets with your local friendly
Boarding Kennels & Cattery.

Competitive rates, for more details please contact us on

01636 830268

or check out our new website
www.valleyboardingkennels.com

NORTH FARM UPDATE

After receiving the different views of longstanding residents about whether the aerial photograph of a farm we included in a recent edition of Bleasby News was North Farm, we are pleased to confirm that it is indeed that very farm.

Another aerial photograph, this time a military shot, and a map from the early 20th century show with little doubt that it is North Farm shown in the former picture. It was a working farm sited near to Gypsy Lane.

BLEASBY LOCAL HISTORY SOCIETY

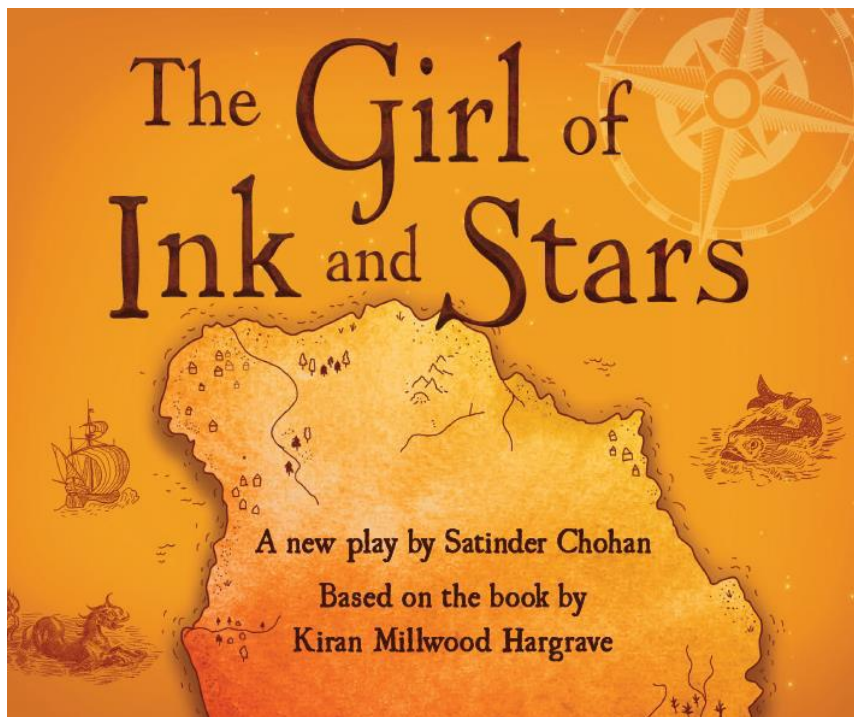
We were sad to miss our April lecture due to a muddle about dates – but we plan to invite a Trent and Peak archaeologist to tell us about recent excavations at Nottingham Castle in our next programme. In May we enjoyed a welcome return of Dr Richard Gaunt who gave us an amusing and informative presentation on political cartoons through the ages.

On June 25th we offer a talk on the life and work of Isaac Walton, an eminent scientist and philosopher who lived for much of his life just over the border in Lincolnshire. Then in July we will be undertaking our annual visit to a place of interest.

We are very pleased to see visitors and new members at any of our lectures.

Barbara Cast - President of Bleasby Local History Society

CHILDREN'S THEATRE AT THE LIBRARY



A tale of maps, myth and monsters

Forbidden to leave her island, Isabella dreams of the faraway lands her father once mapped. When a girl from the village disappears into the island's Forgotten Territories, Isabella and her lifelong friend Pablo go in search of her. Following her map, her heart and an ancient myth, Isabella discovers the true end of her journey: to save the island itself. For beneath the dry rivers and smoky mountains, a fiery legend is stirring from its sleep...

The Girl of Ink and Stars is full of myth, magic and map-making - a story about children; their bravery and curiosity.

Age suitability: Children aged 7+ (and families) **Running time:** 55 minutes **Tickets will be on sale from 31st May** Cost: Library members (adult or child): £3 Non-library members (adult or child): £6: Bingham Library Sunday 11th August 11am: Newark Library Thursday 1st August 10.30am: **Southwell Library** Thursday 1st August 3.30pm. All the performances will be listed on the website at www.inspireculture.org.uk/inkandstars

BLEASBY C of E PRIMARY SCHOOL

This is to let you know that we are applying for a Lottery Community Fund Grant. If successful we would use the grant to install new facilities in the school grounds which would enhance the usability of the space for community activities. We are looking for ideas from local people about how they would like to see the space developed. The more feedback we get from our community the stronger our application will be. It would be fantastic if you could respond with your thoughts. Please don't hesitate to contact me if you want further information. Written responses can be directed to me at the school or by email at office@bleasby.notts.sch.uk and telephone on 01636 830203.

Sam Mensah, Headteacher

LAKE DISTRICT HOLIDAY COTTAGE

Borrowdale Road, Keswick

3 Bedrooms | Sleeps 6

TO LET

Fully refurbished holiday cottage with gas central heating,
open fire place and private parking

Views overlooking the fells, front and rear gardens,
superb location

For further details please ring

01636 830209 | 07812 101303

BLEASBY WI TABLETOP SALE

There will be a tabletop sale on Saturday 14th September 2019 on the Glebe Field, starting at 10am until 2pm - all welcome. This would be great for anyone wanting to sell on their unwanted items. Children might also want to join in and sell toys that are no longer needed, or just come along and have a browse - and a cake of course!

If you would like to rent a table, the cost is £10 - or if you would like the pitch but not the table this is £6. You will be able to unload your car near the field, but then park in an area provided which will be signposted on the day. There will also be a cake stall so you can purchase those delicious homemade cakes. The Waggon and Horses will be doing a barbecue.

*If you would like to book a pitch or a table, please contact Donna Ward on
07779223979*

A DAY LONG OPEN CHURCH – SOMETHING WE ASPIRE TO!

We would very much like St Mary's to be always open in the daytime to allow visits, but we need volunteers to unlock and lock at dusk – please let Rachael 830296 or Diana 830314 know if you would consider taking a turn on the locking rota.

Bleasby Diary of Events

Date	Time	Event	Location
Monday 3 rd June	5.30pm	Trent Churches Choir sing at Minster Evensong	Southwell Minster
Friday 7 th June	7.30pm	Gate to Southwell visits Rolleston Church for concert	Holy Trinity Rolleston
Sunday 9 th June	10.30am	Benefice Service for Gate to Southwell	Holy Trinity Rolleston
Sunday 9 th June	2pm till 6pm	Bleasby Open Gardens and Church	Around Bleasby Village and Church
Monday 10 th June	7.30pm	Meeting of Bleasby Parish Council	Village Hall
Sunday 16 th June	10.30am	Service of Holy Communion	St Mary's
Sunday 16 th June	2pm	Countryside and Footpath Walk to Rolleston	Meet at Fiskerton riverside carparks
Tuesday 18 th June	7.30pm	Meeting of Bleasby WI with Cheryl Roebuck on Armchair Pilates	Village Hall
Sunday 23 rd June	10.30am	Morning Praise for everyone	St Mary's
Tuesday 25 th June	7.30pm	Meeting of Bleasby Local History Society with Alan Leivesley on Isaac Newton	Village Hall
Friday 28 th June	10am till noon	Friendship Coffee Morning	Village Hall
Sunday 30 th June	11am till 3.40pm	Benefice day	Jubilee House Southwell
Sunday July 7 th	10.30am	Holy Communion	St Mary's
Monday 8 th July	7.30pm	Meeting of Bleasby Parish Council	Village Hall
Sunday 14 th July	10.30am	Morning Prayer for everyone	St Mary's
Tuesday 16 th July	7.30pm	Bleasby WI's picnic	Gibsmere Farm
Wednesday 17 th July	2pm	Countryside and Footpaths walk on a Wednesday!	Chestnut tree at Gypsy Lane
Sunday 21 st July	8am till it's over	Walk for Bungoma	Start at Upton Church
Sunday 21 st July	10.30am	Benefice service of Holy Communion	St James Halloughton
Monday 22 nd July		August Bleasby News deadline	
Thursday 25 th July		School holidays start	

Friday 26 th July	10am till noon	Friendship Coffee Morning	Village Hall
Saturday 27 th July	2pm till 4pm	Hazelford Residential fete	Hazelford
Sunday 28 th July	10.30am	Morning Prayer for Everyone	St Mary's

June Church Services in the West Trent Benefice (HC = Holy Communion MPE = Morning Praise for Everyone EP = Evening Prayer)

June	Bleasby	Halloughton	Hoveringham	Morton	Rolleston	Thurgarton	Upton
Sunday 2 nd	10.30am HC		6pm HC	9am HC	10.30am MPE	10.30am MPE	10.30am HC
Sunday 9 th					10.30am Benefice service for Folk Festival		
Tuesday 11 th							10am HC
Sunday 16 th	10.30am HC	10.30am MPE	10.30am HC	10.30am MPE	10.30am MPE	10.30am HC	10.30am MPE
Sunday 23 rd	10.30am MPE		10.30am MPE	10.30am HC	10.30am MPE	10.30am with Methodists	9am HC
Sunday 30 th	11am Benefice Service of Holy Communion at Jubilee House, lunch and afternoon workshop "Growing Healthy Churches".						

July Church Services in the West Trent Benefice (HC = Holy Communion MPE = Morning Praise for Everyone EP = Evening Prayer)

July	Bleasby	Halloughton	Hoveringham	Morton	Rolleston	Thurgarton	Upton
Sunday 7 th	10.30 HC		6pm HC	9am HC	10.30am MPE	10.30am MPE	10.30am HC
Sunday 14 th	10.30am MPE		10.30 HC	10.30am MPE	10.30 MPE	10.30am HC	10.30 MPE
Tuesday 16 th							10.00am HC
Sunday 21 st		10.30am Benefice HC					
Sunday 28 th	10.30am MPE		10.30am MPE	10.30am HC	10.30am HC	10.30am with Methodists	9am HC

FUTURE DATES FOR YOUR DIARY

The Events Group are planning two events for early autumn –

- On Sunday, 1st September – a welcome return of the BikeFest so start polishing up your bikes!
- On Saturday, 14th October – Apple Day, when our bumper harvests of apples and pears will be subject to useful and delicious processes - with lots of fun at the same time.



Mo's Maids

**We offer a Quality Cleaning
& Domestic Service**

One off visits/Spring Cleans
Weekly/Fortnightly/Monthly
Ironing Service

**All equipment & materials provided
All staff are fully vetted & insured**

Call Mo - on 07837 372522 or 0115 8405128

KEFRAMA SCHOOL BUILD – PHASE ONE OPENING DAY

Many of you have followed the story of Keframa High School near Lira, Northern Uganda, which our family have been involved with.

Friday 22nd March 2019 was a huge celebration for Keframa High School. After many months the new school structure was finally opened! Since September 2018 construction has been taking place on the new school site by teams of local people – having a huge beneficial impact on the community and surrounding economy. The Opening Day was a wonderful time to join with the staff, students, local friends

and honoured guests to celebrate what has been achieved so far. The Bishop of Lango, Rt Rev Professor Alfred Olwa, as well as the representative of the Minister of Education and Sports, gave messages of support. Some of the Keframa School Build UK team were also present and were able to join in the festivities as the students celebrated in true Ugandan style with music, song and dancing.



Picture of Jimmy Francis (School Director) on the opening day

So far, we have raised over £250,000 which has enabled the first phase of the school to be built, including a large hall, library, laboratories, office space, a water system, toilets and a kitchen. Our aim over the next two years is to assist the governors to raise the standard of education through investment in the staff, equipping the school with basic facilities such as lab equipment and textbooks and simple IT. This will require significant funding. The new buildings are sufficient to double pupils to 300 over the next two years. The governors will continue to plan long term to utilise the site and increase capacity to 500. Funding this growth is our long- term challenge.

Whilst some students can now afford school fees, the ethos of the school is to provide education for those from poor rural families and so we need to find sponsorship for more students. Currently we run a small sponsorship programme in which every penny goes directly to the school in support of the student's education. If you would like further information about this please look at our website, www.keframaschoolbuild.co.uk.

Join us by supporting our bike ride from London to Paris, this month <https://www.justgiving.com/teams/bike-keframa>

Get involved by hosting a coffee morning, running a 10k or marathon (or sponsoring those who can!)

<https://www.justgiving.com/fundraising/Beverley-Hegde>

Come to our Garden Party on Sunday 7th July at Sacrista Prebend in Southwell, 3-5pm, and hear more of the opening day for phase one of the build, see a short film taken on the opening day, and learn of our plans going forward. Children are waiting for a sponsor, Consider, sponsoring a student. Save the date, for a Barn Dance in September ...details to follow



Reg.charity no. 1178686

With thanks from the Keframa School Build team

HYDE BARKER

WORLDWIDE TRAVEL & ADVENTURE



100% FINE
SPECIALIST



Affordable luxury



Escorted touring



ABTA
ASSOCIATION
OF
BRITISH
TRAVEL
AGENTS



Tel: 01636 816 262

www.hbtravel.co.uk | 1 King Street, Southwell

Bleasby In Bloom



In the lead up to Bleasby Open Gardens on Sunday 9th June, please help to make Bleasby beautiful.....

.....by displaying seasonal blooms at the front of your house or on your garden gates & walls, an old bike, your wellies, wheelbarrows & watering cans.....

No official judging.....everyone's a winner!

Bleasby Open Gardens and Open Church

Sunday 9th June

2.00pm - 6.00pm

**Ten gardens, a traditional hay
meadow and floral displays in
the church**

Refreshments at the Village Hall

Plant Stall

Parking and programmes available at the
Waggon and Horses carpark

Admission by programme - adults £5 -
accompanied children free

We look forward to seeing you!

BLEASBY C OF E PRIMARY SCHOOL - OFSTED REPORT, MARCH 2019

Congratulations to Samuel Mensah (Headteacher), the staff, pupils and governors of Bleasby School on the recent Ofsted Inspection Report. The school was rated “Good” for leadership and management, quality of teaching, pupil outcomes and early years provision, and with personal development, behaviour and welfare rated “Outstanding”. Inspectors concluded “This is a good school”.

Summary of Key Findings:

Bleasby School is a welcoming, friendly and inclusive school where pupils are happy, safe and well cared for.

Members of the governing body and senior leaders have brought stability following a period of turmoil and change in the school’s leadership.

The head teacher and senior leadership team are well respected by pupils, staff parents and carers.

The curriculum provides a broad and balanced range of learning opportunities. The taught curriculum is complemented through a range of purposeful enrichment weeks and educational visits.

Teaching across the school is consistently good and leads to high attainment and good progress for most pupils.

Pupils behave exceptionally well. They enjoy attending school and value the varied opportunities provided.

The school promotes pupils’ spiritual, moral, social and cultural development very well. Pupils are excellently supported in their personal development and well-being.

Pupils respect each other. They are well prepared for life in modern Britain.

Safeguarding arrangements are effective. Pupils feel safe in school. Adults know all the children individually

Children get a positive start to their school life in the early years. Staff develop children’s creativity and curiosity very well. They are well prepared for Year 1.

The partnership with parents and the wider community is a strong feature of the school.

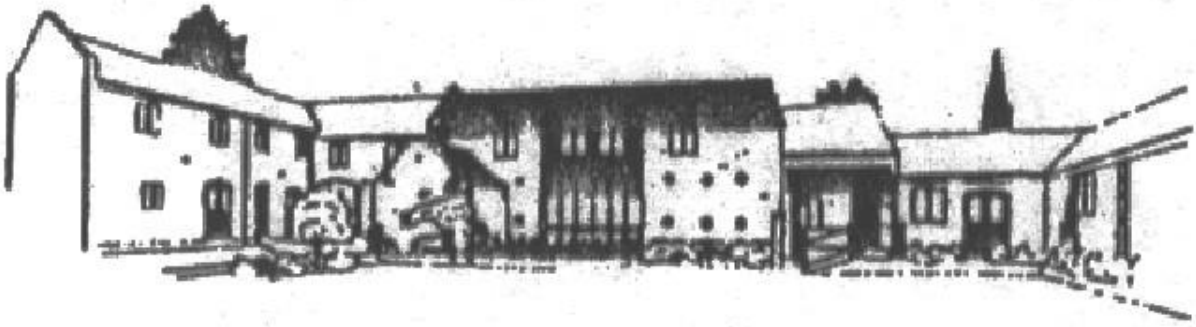
Additional funding is used effectively to remove pupils’ barriers to learning, support their learning and provide enriching opportunities.

Parents and carers are pleased with the school and staff are proud to work at the school.

Middle leaders have plans for further developing their subjects and areas of responsibility. However, they do not rigorously evaluate the impact of their actions to clearly determine the next steps for improvement.

Overall teachers’ expectations are high. But, work planned for the most able pupils is not sufficiently challenging. As a result, the most able pupils do not make the progress of which they are capable.

The full Ofsted report is available on line at [Bleasby School Ofsted](#).



THE BYARS

A small, family owned and managed, independent
Care Home situated amidst the rural landscape of
the Trent Valley

The highest quality care in the highest quality
accommodation

Our home offers long and short term care for the
elderly

Viewing welcomed. Further details on request

THE BYARS

· CAYTHORPE · NR. LOWDHAM ·
NOTTINGHAMSHIRE · NG14 7EB

REGISTERED NURSING HOME

Tel: 0115 9663981

Thinking about your hearing?

If you've noticed that you sometimes have difficulty hearing as well as you used to then you could have ear wax build up or it could be progressive hearing loss.

At Correct Hearing we can solve both problems and help you get the very best from your hearing.

Ear Wax Removal

We use micro suction to remove ear blockages, the safest and most effective technique. The procedure takes just a few minutes, is completely painless and can often be performed without weeks of using ear drops.

Huge Range of Hearing Aids Available

Including 'invisible' ITC devices. All hearing aids are uniquely configured to correct your individual hearing loss.

FREE HEARING TESTS

We also offer free hearing tests without any obligation. Same day appointments are available.



*Sarah Volkes Director
of Correct Hearing*



FREE CONSUMER GUIDE TO BETTER HEARING

We are giving away **FREE** copies of the 36 page full colour Consumer Guide to Better Hearing Brochure which is full of helpful and clear information to help you understand more about how your hearing works and why you may be experiencing difficulties. **GET IN TOUCH FOR YOUR FREE COPY**



Correct Hearing

To find out more, get in touch today. Tel: 0115 961 8351 / 0800 368 4747

Email: info@correcthearing.co.uk • www.correcthearing.co.uk

242 Oakdale Road, Carlton, Nottingham NG4 1AD



Hazelford

The Provider of Quality Care

If you have ever wanted to live or stay in gracious surroundings within extensive beautiful grounds having views over the Nottingham Countryside, there is the opportunity to do so at Hazelford Residential Care Home.

The lovely gardens and charming views make Hazelford a delight for our guests. Hazelford provides a warm and friendly home with a committed, friendly team of staff whose endeavour is to provide for our guests comfort and needs.

Hazelford Residential Home is well known within the local community for its high standards. Both short-stay and permanent residents live in a luxurious, reassuring and comfortable environment.

We strive to understand our guests hopes, aspirations, hobbies, pastimes and interests in order that we can make a difference.

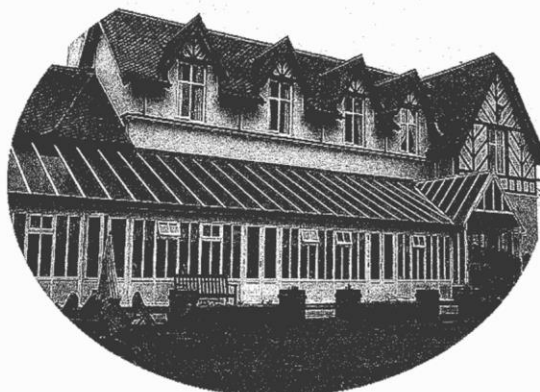
Our aim is to offer stimulating and gentle support where the well being of each of our guests is our main concern. Our highly qualified experienced staff and management team provide you with the best range of facilities to enjoy life to the full.

The Hazelford invites you to visit at any time. A warm welcome awaits you at

HAZELFORD

**Boat Lane
Bleasby
Nottingham
NG14 7FT**

Tel: 01636 830207



BUS SERVICE – 300 MEDI-CONNECT

The timetable for the bus service, which runs on Mondays, Wednesdays and Fridays from Lowdham to Southwell and then on to Newark, is available to all.

Outgoing stopping point	1st service	2nd service
Lowdham, Epperstone Road	09.30	12.30
Lowdham, Magna Carta	09.33	12.33
Lowdham Station	09.34	12.34
Caythorpe, Main Street	09.37	12.37
Hoveringham, Main Street	09.41	12.41
Thurgarton, Bleasby Road	09.48	12.48
Bleasby, Main Street	09.52	12.52
Fiskerton	09.57	12.57
Morton, Main Street	10.00	13.00
Southwell, Church Street	10.04	13.04
Southwell, Ropewalk	10.07	13.07
Newark bus station	10.30	13.30
Returning stopping point	1st service	2nd service
Newark bus station	10.35	13.35
Southwell, Church Street	10.58	13.58
Southwell, Ropewalk	11.01	14.01
Morton, Main Street	11.07	14.07
Fiskerton	11.10	14.10
Bleasby, Main Street	11.15	14.15
Thurgarton, Bleasby Road	11.19	14.19
Hoveringham, Main Street	11.25	14.25
Caythorpe, Main Street	11.29	14.29
Lowdham Station	11.32	14.32
Lowdham, Magna Carta	11.33	14.33
Lowdham, Epperstone Road	11.36	14.36

ANTHONY HARVEY OF ORCHARD CLOSE

Apologies from the editors for a mistake in Tony Harvey's name – sincere apologies have been made to his widow, Patricia. It was very interesting to talk to her about their lives: the unfortunate error turned out to be a very good opportunity to get to know more about Tony and Pat.

Summary Train Timetable - May to December 2019

	From Bleasby to Newark Castle **
Monday to Friday	06.16;07.14;08.17;10.11; 12.14;15.14;17.12;18.39;19.41;22.45
Saturday	06.17;07.14;08.19;10.11; 12.15;15.12;17.11;18.09;21.43
Sunday	9.51;11.51;14.57;17.47;22.49
	From Newark Castle to Bleasby
Monday to Friday	06.08;06.42;07.39;09.39;11.39; 14.39;16.39;17.39;17.56;22.55
Saturday	06.10;07.41;08.43;09.38;11.39; 14.39;16.38;17.39;17.54
Sunday	9.29;11.42;14.48;16.46;18.34;22.38

** journey time approx 15 mins

Summary Train Timetable - May to December 2019

	From Bleasby to Nottingham *
Monday to Friday	6.21;6.55;7.52;9.52;11.52; 14.52;16.52;17.52;18.07;23.05.
Saturday	6.22;7.54;8.55;9.51;11.52; 14.52;16.51;17.52;18.06
Sunday	9.41;11.54;15.01;16.58;18.46;22.50
	From Nottingham to Bleasby
Monday to Friday	05.54;06.53;07.56;09.49;11.51 14.50;16.50;18.17;19.19;22.26
Saturday	05.55;06.53;07.58;09.51;11.53; 14.50;16.48;17.48;21.24
Sunday	09.30;11.30;14.35;17.27;22.28

*Journey time approx 25 mins

Whilst every effort is made to ensure accuracy, the editorial team cannot accept responsibility for errors or omissions in articles appearing in Bleasby News. The views expressed in Bleasby News are not necessarily those of the Editors nor of Bleasby Parish Council. Bleasby News is distributed by local volunteers to whom we remain very grateful. Printed by Unwin Print, Farnsfield.

Bleasby Parish Council Chair's Report 7th May 2019

A Strategy for the Future, or, "Where do we go from here?"

Introduction

We now have a smaller Parish Council as a consequence of no parishioners choosing to stand for election and only four of our existing number choosing to stand for re-election. Having served for a most productive and committed four years Charlotte Gent has stepped down from her formal Council commitment to Bleasby, whilst Chris Foster, having made a full two terms in office has 'notched up' no less than eight years of personal commitment to the parish. I thank them both most sincerely for giving up so much of their time, energy and focus to the welfare of our parish and for their roles in enabling and supporting the following during the Council's four year term of office:

Achievements

- The development, construction, delivery, consultation and production of the Parish Plan which was the major platform for the outgoing Council.
- The encouragement and facilitation of the emerging supportive interest groups generated by that Plan.
- The consequent raising of community spirit and engagement of parishioners through these groups.
- A programme of events that have had a wide-ranging appeal across all sectors of the parish.
- Greater cooperation and engagement with key components of the parish, including St Mary's Church, the Village Hall, Bleasby School and the Waggon and Horses.
- Active support for the design, development, construction, celebration and future maintenance of the Aircrews Memorial on the Glebe Field and the Centenary Wood on the Jubilee Ponds.
- Ownership finalised and improvements made at Ferry End to provide a place for quiet reflection and ease for parishioners and, incidentally, members of the public.
- Development of a Road Safety and Management report and strategy which has ensured better road markings, speeding controls such as interactive speed signs and speed limit 'bin-reminders'.

All this quite apart from all the normal parish councillor duties! Our two colleagues who have stepped down from the parish council will be sorely missed - so the following 'Business Plan' is being proposed to mitigate their loss!

A strategy for Bleasby's future

'Staffing'

- The current four councillors will continue to ensure the proper administrative, finance and management of the Council's legal requirements and responsibilities are met.
- Our new parish clerk, Karen Green, will take over finance with a new proven management programme, Scribe, to ensure effective and constructive administration.
- Three additional councillors will be sought for co-option to bring, if at all possible, a balance of gender, age, expertise and background to the Council in order to attempt to create as representative a Council as possible.
- In order to make the possibility of co-option as attractive, manageable and the least onerous, it is anticipated that each co-optee might offer a particular focus (of personal interest or expertise relevant to the parish's interests) to bring to the Council which will serve as the main focus and reason for their co-option – even if only for a limited period.
- Those of the community who do not wish to take the co-option step but would be willing to participate more independently will be encouraged to become:

- Consultants to the Council – who would offer their expertise, experience or interest in a particular field when needed by the Council in its wide-ranging decision making – such things as finance, asset management, civil works, agriculture, canine matters, ecology, insurance, land management, flood mitigation etc.
 - Associates of the Council – who would be willing to act as representatives of particular groups, interests or areas of the parish to provide information on localised aspirations or concerns and to act as a means to gauge responses to relevant proposals.
 - Focus Group – who would express personal opinion as members of the parish community and act as a kind of touchstone.
 - Village Volunteers – who would be willing to continue to support village events, activities and projects on an ad hoc basis, making use of their particular talents, skills and abilities as time and interest allows.
- To further encourage parishioner contribution and participation in village matters, I would propose that provision be made for an agenda item at each PC meeting to be allocated for a parishioner to bring forward an idea or proposal for the Council to consider.

‘Finance’

- Following the needs and aspirations for the village expressed in Parish Plan Questionnaire and consultation responses it was clear that income would have to be increased by raising the precept in order to achieve these improvements.
- After determining a budget plan for 2019/20, which included consideration of the major Parish Plan priorities, a serious budget deficit in 2018/19, a need for contingency reserves and, of course, predictable costs for the repayment of the Glebe Field loan, salary costs and administrative costs, the precept was set at £17,658, giving any new Council a head start, eliminating a predicted £2,500 shortfall and providing an additional £4,000.
- Owing to the fact that no election was held, saving c£1,700 and there had been no clerk’s salary to pay for 3 months pending an appointment, saving c£1,000, the Council’s financial position is now much improved from its previous precarious level.
- As more detailed and informed decisions are made respecting the focus and extent of Parish Plan initiatives, then £3,500 in the current Parish Plan budget can be detailed more precisely with the potential of additional spending, using those funds unexpectedly saved.

‘Assets’

- The Council now owns the Jubilee Ponds, the Glebe Field and Ferry End, each requiring management and associated funding.
- Maintenance works on the Jubilee Ponds are now largely undertaken with mutual benefit by members of the Bleasby Carp Syndicate and working groups provided the Bleasby Village Volunteers – both parties who we thank most sincerely.
- Ferry End is now in our full possession and its improvement and maintenance has been achieved by the very earnest work of yet another small group of Village Volunteers to whom we are also most grateful.
- The Glebe Field maintenance received much focus as a result of the preparations for the siting and dedication of our stunning Aircrews Memorial, again largely through a group of Village Volunteers, and now with the major mowing responsibility being taken over by the contractor, Ulyatt Landscapes.
- As a result of the increased precept the mowing of our verges and junction ‘flares’ can now be also mown by this contractor.
- Our major asset is, of course, our parish community with its public spirited approach and wide ranging contributions to the quality of village life. To them we recognise and thank the contributions made in so many ways by the Parish Plan spawned groups: Steering, Events, Countryside and Footpaths, Neighbourhood Watch, Road Safety and Management Groups,

not forgetting the long-established and critical Flood Action Group and well established groups generated by St Mary's, the WI and the Village Hall. Plus there are a number of emerging groups such as the Website and Communication and the Station Adoption Groups – the latter now awaiting the determination of the franchise operator.

'Contributory Factors'

- Few of the achievements would have been as significant – or even possible – if it were not for 'behind the scenes' support from the County and District Councils and councillors and many other anonymous individuals who have provided free labour and advice, and materials and services which have included Christmas trees, memorial grants and refreshment costs, bases for flood stores, speed limit bin stickers, stationery, printing of Parish Plan materials, fruit, flowers, commemorative trees and, literally, quite a lot of blood, sweat and good humour!!

'Our vision'

- I do not personally see that the Council's contribution is so very different to that of the parish as a whole – it all seems to be 'one-and-the-same' thing – for we villagers to try to achieve the best for our parish in terms of the quality of life that we experience and the nature of the environment that surrounds us.

Yes, the Council has ultimately to make many of the formal decisions but, with the community engagement and participation which has been experienced so far and which is being envisaged and invited in this report for the future, then the Council's decision making should be well-informed, well advised and well supported by all those who choose to make their contribution to our parish.

I see a very vibrant, productive and community led and supported future ahead from which we all deserve to benefit.

Peter D Cast, Current Chair of Bleasby Parish Council

NJN JOINERY

Phone: Nigel Newcombe
on
01636 525506
or
Mobile: 07837 235427

**ALL TYPES OF JOINERY
AND
MAINTENANCE WORK
UNDERTAKEN**



MAKE IT A PLEASANT WALK
...NOT AN OBSTACLE COURSE!



PICK UP YOUR DOG'S POO!

A reminder from one of our younger readers!

The
**WAGGON
& HORSES**
Bleasby

**NOW OPEN
ALL DAY
EVERYDAY**

Great ales
Lovely wines
Open fire
Cosy lounge
Beer garden



**Delicious homecooked food
served everyday**

**Woodfired, stonebaked Pizzas
Monday & Friday evenings**

**A proper Sunday Roast
served 12-3pm**

We welcome
walkers with
muddy boots
and dogs with
muddy paws!



GYPSY LANE, BLEASBY NG14 7GG [TEL:01636830283](tel:01636830283)

www.thewaggonbleasby.co.uk