

BLEASBY NEWS



Photo courtesy of the Newark Advertiser

"EVACUEES" ARRIVE IN BLEASBY!

FEBRUARY 2017

Pictures of the Playgroup Christmas Party



Welcome to the February Issue of Bleasby News

Here we are in the depths of winter or so it would seem at the time of writing. Time to reflect on Bleasby over the Christmas period. December 2nd ensured a great start to the season when the older children of our school enacted the arrival of World War II evacuees at Bleasby Station. Dressed for their parts in clothes of the 40s (as was their teacher, Mrs Louise Carpenter, in WVS uniform, along with her assistants in period clothes) the children were led along the main street towards their destination by an enacted Mr Robert Morris, the ARP Warden. They had also been accompanied on their make-believe railway journey from Sheffield by a VAD nurse in genuine 40s uniform. This uniform had been worn in WWII by Mollie Morris of Bleasby. Members of the Morris family lived at Little Dower House from 1918 to 1999.

Along the way, buildings which were standing in Bleasby at the time of the war were pointed out - the knowledge of Beverley Wright, who had then been living in Bleasby as a boy, being invaluable in describing what the village was like at that time – he had even witnessed one of the aircraft crashes which had occurred.

On arrival at the School (aka the Village Hall which used to be the school) the children settled down in the recreated school room to eat their 40s style lunch, carried with them in authentic paper carrier bags, along with their cardboard gas mask boxes. They then had the interest and pleasure to be able to talk to people who had lived through the wartime – Dorothy Winn, then a girl in Thurgarton, Sylvia Kershaw then of Gibsmere, and an evacuee from Morton, Gordon Aspley. The children learned such a lot from the day and were very responsive in their thanks to those who had been involved, sending each of them specially made thank you cards.

The younger children of the school had their time in the limelight too as they starred in a splendid performance of Lights, Camel, Action! – a lively retelling of the nativity story.

The village as a whole came together on 10th December when the Christmas Tree was lit up on the Glebe Field. The Salvation Army Band was in attendance as was the school choir. However, it being a most intemperate evening, all hurried into the welcoming church for a splendid hour or so of carol singing and brass band music. The event, organised by the Parish Council and very much assisted by the Church Council and Bleasby School, was greatly enjoyed by those who braved the weather and filled our lovely St Mary's. We are also fortunate to have the Waggon and Horses on hand to provide refreshments on such occasions.

The Trent Choir gave their annual Carol Concert the next day, 11th December – but in Rolleston Holy Trinity. Another full church – all proceeds (over £500 in donations) went to Reach, a local charity working with people with learning disabilities.

St Mary's was again full on Christmas Eve for the annual Crib Service, always a very popular event. Angels, shepherds and wise men acted out the story and children from

Bleasby School read from the Bible of the happenings on Christmas Day so long ago – and of course there was again lots of singing!

Well done and thanks to all who helped with any of these events.

We always look forward to receiving your articles, views, ideas, poems etc so please send plenty for the April edition to:- Rachael Andrew, Sutton House, pran@suttonhs.fsworld.co.uk or Barbara Cast, Little Dower House, barbaracast@btinternet.com by 20th March.

Your Editors, Barbara and Rachael

BLEASBY PARISH COUNCIL NEWS – A LIFELINE?

The Bleasby School's recent focus on life in Bleasby during the Second World War and the Aircrew Memorial Group's continuing efforts to ensure a permanent parish feature in acknowledgement of the young airmen's lives lost in our parish in the endeavour to ensure our freedom, have both served to highlight our good fortune in being able to live in Bleasby as we know it today. Not for us wartime deprivations or wartime loss, nor the rule of a foreign fascist government as might have been.

A few of our older residents experienced first-hand wartime life in Bleasby and neighbouring settlements and, sharing it with the school children, vividly recalled the impact that the war had upon the village as well as themselves. Their story is our history and a lesson to be learned. Community resilience, common effort and cause and a strong sense of comradeship and community spirit helped them to survive and overcome hardship and fear and loss - values that we today can adopt and demonstrate to our mutual and village advantage.

Over the Christmas period, those characteristics were exemplified at various venues on various occasions but were especially highlighted at our Carols and Lights event which, after many weeks of preparation, could have been 'extinguished' and washed out by torrential and continuous rain. Despite a most discouraging prospect in sight, many families still turned out in the pouring rain to join up first in the Waggon and then on to the Glebe Field to make Christmas tree decorations and to muster for the event under the cover of the marquee. The rain continued unabated and the decision was taken – following an invitation from the church – to move the whole proceedings to St Mary's where, it seemed, that the whole village was assembled and warmly welcomed despite their dripping and muddied state.

The Salvation Army Band quickly engendered a warm and positive spirit and the school choir, along with enthusiastic contributions from the assembled (somewhat sardined, steaming mass), "raised the roof" and brought a 'wartime' community Christmas spirit into the hearts of everyone.

Post-Christmas, at the next Parish Council meeting all agreed that the experience of all elements of the parish working closely together should be built upon and all future events and activities should be as all-embracing as possible. Further Council

discussions of entering the Best Kept Village Competition, progressing the Parish Plan, improving the Bleasby Community Website and planning a programme of village events, all seemed very appropriate and positive continuations of a community spirited agenda. More prosaic ongoing concerns such as speeding, support of our vulnerable bus service to Southwell, flooding risk and the identification of individual houses (especially for emergency services), also had to be addressed but each has its community implication and, together, much could be achieved to address or minimise these issues.

Residents will have noticed that, at the request of the Council, speed tubes were affixed to the “Chapel Bend” near Orchard Close, but a parked vehicle nearby caused traffic to slow and as a consequence no significant speeding was recorded. A mobile police speed camera has also been parked on three occasions on the Goverton side of the level crossing but apparently without anything significant to report.

We now have only five months left of our Tuesday and Thursday bus service to Southwell and an inspector was recently reported to have been on it to check its usage just after Christmas. The WI are continuing to try to organise its wider and more regular use, knowing that it is a lifeline to older, less able and non-car-using members of the parish. The service has to prove its worth to be continued – with greater usage, it might even be improved!

A resident asked the Council to consider the merit of giving every house a number in order to ease delivery van confusion and constant querying but especially so that emergency services can locate houses with a minimum loss of time. House names can be retained but Royal Mail would expect the number to be used for postal purposes.

We have been fortunate so far in that rainfall this winter has been light, the river low and the water table well down. We still have most of the winter to contend with, so we must remain on guard knowing that we are as equally vulnerable to heavy and torrential rainfall in the weeks to come as we are from river flooding.

On a more sombre and serious note, the Council has been asked to bring to residents’ attention the fact that there is no right of way across the railway line linking the far end of the Nottingham bound platform with the public footpath from Goverton. Train drivers have reported their serious concerns on seeing people crossing the line in front of non-stop trains travelling at high speed. Drivers are faced with the strong possibility of being unable to slow the train sufficiently to avoid impact and, as a very recent case demonstrated, suicide attempts and ‘successes’ make their lives a nightmare enough without the fear of destroying some innocent life. Network Rail will prosecute any offenders.

Peter Cast, Chair, on behalf of the Parish Council

FROM THE REVD PHIL

'There is no fear in love. But perfect love drives out fear' 1 John 4:18

Dear All,

I experienced a twinge of anxiety recently as I blurted out "*I hate Christmas*" to someone. It probably wasn't what was expected from me given my occupation and all! But there it was - said. I also hate New Year resolutions too! Not to mention....

Annabelle my nearly 3 granddaughter lightened up my festive season considerably by putting on a blanket and performing her favourite song. She knew the tune, some of the arm actions and just a few of the words. It was very cute. But how could she know that the song '*Let it go*' was a hit and Grammy award winner from the top-grossing animated movie of all time? My granddaughter must be a genius! It was time for me to catch up with her, watch '*Frozen*' and get acculturated.

I discovered the song was a later addition to the original production idea. A traditional 'good v evil' storyline was failing to grab anyone's imagination, they don't happen much in real life either. The change to a story about how '*love conquers fear*', and the addition of Annabelle's favourite song, transformed it into an unprecedented success. '*Let it go*' is sung by a heroine realising she has to be who she really is and not try to be what others expect or demand. She has to 'let go' of trying to live up to being the perfect girl, and be who she is.

So it's just a Disney film for kids, but is there an adult truth too? Haven't we tried to be something we're not, or live up to someone else's aspirations, or meet impossible standards? How great to be released from all that, depending on who you become of course! Love conquering fear, I've heard that truth somewhere before...

Surprisingly I did have a lovely Christmas after all. May a resolution free New Year surprise you with happiness.

The Revd Phil

*'Let it go, let it go, and I'll rise like the break of dawn...'
'Let it go, let it go, that perfect girl is gone...'*

phil_07@btinternet.com - www.westtrentchurches.co.uk - 07720010066

The Revd Phil is contactable as above or via the administrator for the West Trent Group: Sarah Hall at 07855022921 or WestTrentGroup@gmail.com

LAKE DISTRICT HOLIDAY COTTAGE

Borrowdale Road, Keswick

3 Bedrooms | Sleeps 6

TO LET

Fully refurbished holiday cottage with gas central heating,
open fire place and private parking

Views overlooking the fells, front and rear gardens,
superb location

For further details please ring

01636 830209 | 07812 101303

**A. Rickett & Son,
Bleasby
Builder & Contractor
Tel: 01636 830468**

BLEASBY RAILWAY CROSSING

The photograph (circa 1968) shows the signal box and levers being manned by my father, Arthur Lewin, who was formerly a wartime physical training instructor with the Sherwood Foresters Regiment. Arthur saw front line action in Norway and Alamein, returning to work on the railways. He became Bleasby Station Keeper and he and his wife Irene raised five children, three of them in the Station House.

During the 1950s the railway crossing gates were locked across the road from midnight until 6am and anyone wishing to cross during this time had to press a button on the gatepost to ring a loud bell under the bedroom window of the Station House. Arthur and Irene took turns to get up and go to unlock and relock the gates, often many times a night. This and other daytime duties were conditions of the occupancy of the Station House. (The large green electric bell unit can still be seen under the right hand window of the Station House.)

Arthur was famed for his hand-stands on the crossing gates as he swung them open and also for his hair cutting service which he carried out between trains. This was a popular service as long as an army No.1 hair cut was required.

Brian Lewin



Arthur Lewin at the signals

VIC WALTERS - 1923-2016

Those many who knew Vic Walters were saddened to hear of his death at the age of 93. He was a good friend to Bleasby and faithful supporter of many of its organisations.

Vic was brought up in Bramley Vale, Derbyshire. During WWII he was called up in 1941, as soon as he became 18. He joined the Royal Artillery and served in the British Eighth Army in North Africa, fighting with "Monty" at El Alamein and in Italy at Salerno, Anzio and Monte Casino. By the time the war was over he was engaged in post war work in Yugoslavia, and had risen through the ranks from gunner to sergeant. On his return home he married Linda and their first real home together was at Garden Cottage built for them by Mr and Mrs Baggaley who employed Vic as gardener and Linda as housekeeper at their home "The Old House", the last house on the left as you go down to Gibsmere. Later they moved into Orchard Close and Vic worked for The Boots Company at their apple orchards in Thurgarton until his retirement.

Vic served for over 50 years on St Mary's PCC, was a member of the Parish Council and a one-time Chairman and he also nurtured the Bleasby Branch of the British Legion, holding the offices of Standard Bearer and finally President. He contributed a great deal to the life of the village including annual village sports days and is remembered with respect, gratitude and affection. Latterly, for several years, Vic and Linda lived in King's Court in Southwell and recently celebrated their 70th wedding anniversary. Vic is survived by Linda, their two sons, four granddaughters and six great- grandchildren.

CHURCH NEWS

Christmas Events and Services

We were pleased to be able to have the Salvation Army Band and carol singing in Church at short notice when heavy rain dampened the enthusiasm for the outdoor Christmas tree event on the Glebe Field. The band led the singing of well-known carols and the school choir performed some of their Christmas programme for us. It was still possible for the children to make decorations and to process to the Christmas tree and switch on the lights at the end of the evening. So, in spite of the weather, it was a successful and enjoyable event. The Salvation Army members were grateful for the proceeds of the collection taken in church and from donations made by the church and parish council to defray their expenses and further their work with the homeless, the lonely and those in distress of any kind.

The crib service was very well attended as usual, those on the door recording 173 adults and children. Our thanks go to all those who helped on the night, including actors, readers and parents of readers, and to Bleasby School for their support in finding children willing to perform in front of such a big audience. Special thanks to Jack Shine for standing in at short notice as a shepherd and managing the readers at the same time! The crib service in this format has been going for at least eight years so if anyone would like to contribute to a different version and if there are any budding performers out there, please let us know.

Collections were made during Advent for the Women's Refuge in Newark. A box was left in the church porch so that anyone could drop off toiletries. As a result of people's generosity the box needed regular emptying and phone calls to churchwardens produced donations of bedding, household items and Asda vouchers. Thank you all for your support for this worthwhile charity.

Shrovetide Supper

We hope you will come and join us for supper in the village hall on Saturday, February 25th. We normally hold a Shrove Tuesday Supper but the village hall is in use on that day so we have brought it forward to the previous Saturday.

Lent Lunches

We will be holding lent lunches from 12.30 to 2pm on the six Saturdays in Lent, starting on Saturday March 4th and continuing until April 8th. Please find venues on emails and notice-boards. These are simple meals, cheese and soup with good company and an invitation to make a donation to the hosts' chosen charity. No need to book unless you are bringing a group, in which case the host might like to be warned.

Easter Events

During Easter week we have booked "The Nine" to perform "Voices in a Mystery" - an Easter Cycle. Written by local poet Paul Mein, the poems tell the stories of ordinary people touched by the events of the crucifixion. Don't let "poetry" put you off. It is accessible, thought provoking and comes strongly recommended by people who heard the work in previous years in Southwell Library, the Lace Market Theatre and St Peter's in Nottingham. We are fortunate to get a booking so it would be good to have a full church. Please bring friends and encourage others to come. There are no tickets but there will be a retiring collection to defray the expenses of the performers. This event will take place on Wednesday April 12th at 7.30pm in Bleasby Church.

Diana Temperley and Rachael Andrew, Churchwardens

BLEASBY WI NEWS

Our Christmas Party was a great success, as usual, thanks to the hard work of the committee. Lots of lovely food provided by members, a tantalising quiz about famous local people and various games made for an enjoyable evening. We have an annual “pretty parcels” competition whereby members choose a gift for a particular charity and then wrap it up beautifully. This year we sent gifts to the Newark Women’s Refuge who were overwhelmed by the car load of gifts and more basic items which arrived at their pick-up point.

At our next meeting we will be choosing a charity to support over the coming year, adhering to the National Federation’s strict criteria. In the past we have supported hospices, charities for the homeless, a local theatre group, medical research, provision for learning disabled among many other worthwhile causes.

Recently, the book group discussed *The Tenant of Wildfell Hall*, an appropriate choice given the excellent drama on BBC about the Bronte family and the inspiration for this story being about alcoholism and abusive relationships.

The usual busy social round of speakers, activities, lunches, outings and games afternoons continues to be enjoyed by many but are of particular benefit to those without transport or who live alone.

We meet on the third Tuesday of the month in the Village Hall at 7.30 pm. At our 21st February meeting we will welcome the Revd Phil White, our vicar, who will speak about the St Dorcas orphanage in rural Kenya and on March 21st the talk will be on *The Police Convoy*. If you would like to come to a meeting before a commitment to join, please contact Monica Richardson on 830231 or any member who will be pleased to introduce you to the membership.

Rachael Andrew

St Dorcas
Orphanage,
Kenya





The BSFA Christmas Fair this year was sponsored by Taylor Motor Group of Newark. Sunday 4th December saw yet another successful BSFA Christmas Fair at the School. Many thanks to everyone who attended, donated their time, cakes, biscuits, wine, chocolates, prizes and for buying raffle tickets. We raised over £1,100 and this money will go into the current fundraising project fund.

We recently announced that our current fundraising project is for a much needed extension to the school hall. The hall is not big enough for lunches or performances so we hope that with the entire community's support we will have enough funds for the extension next year.

Items the BSFA has recently purchased for the School are as follows:-

KS2 assorted battery holders, tumbler switches, crocodile clips for science - £128.77

KS1 set of white boards with alphabet and grid lines to assist with writing - £224.25

Electric hand dryers and soap dispensers along with installation - £2,000.00

Felt, ribbon and materials for the School hall banners - £91.97

Purchasing the children's handmade tree decorations - £10.08

2 Visualisers - £420.00

Anti-bullying wristbands and stickers - £110.00

Christmas Fair Arts and Crafts room - £100.00

School Christmas tree - £70.00

£100 donation towards the Christmas Party food

Free entrance to the Christmas Grotto for Bleasby School Children with a wrapped gift - £120.00

Visiting Panto Performance - £979.00

Our Monster Mash event in November brought in a total of £355.05 in profit and the Christmas Card Project raised £240 so thank you for your support.

BSFA Bingo and Curry Night takes place on 10th March from 7:30pm at Thurgarton Hall and we are delighted to announce that Neelam Balti of Lowdham will be providing the food. Tickets are £12.00. We will be running a raffle with a difference with 'services' amongst the prizes so if you have a service you're able to donate (home cleaning, dog walking, gardening, beauty treatments etc.), we would be very grateful! If you're interested in tickets or donating a service, please contact Nicola Bennett on 07837 810487.

Easy Fundraising - Did you know that whenever you buy anything online - from your weekly shop to your annual holiday - you could be collecting free donations for Bleasby School Friends Association? There are over 3,000 shops and sites on board

ready to make a donation, including Amazon, John Lewis, Aviva, thetrainline and Sainsbury's – it doesn't cost you a penny extra!

1. Head to <https://www.easyfundraising.org.uk/causes/bleasbyschoolfa/> and join for free.

2. Every time you shop online, go to easyfundraising to find the site you want to shop with

3. After your purchase, that retailer will make a donation to your good cause for no extra cost!

In the past 4 years, we have raised over £11,000. This is a great way to feel proud of supporting the School without it actually costing you any money.

There are no catches or hidden charges and BSFA are really grateful for your donations.

The BSFA Committee would like to take this opportunity to thank everyone for their support throughout this School year. The Committee is very proud of what we have achieved and encourage anyone who is interested in taking part to join us at our next meeting at the Waggon in Bleasby on Monday 6th February 2017 at 7:30 for a social start and the meeting will begin at 8pm.

BLEASBY LOCAL HISTORY SOCIETY

Members enjoyed the annual supper with its usual wonderful spread of 'faith' food (ie everyone brings something and we hope that it goes round and there something for everyone!). Our next talk is on February 28th and is to be given by Ken Ogilvie – "Who lived in my house in 1901?" – and on March 28th we have our AGM.

All are welcome to come to our talks – members free and £2.50 for visitors.

Barbara Cast - President of Bleasby Local History Society

Are you aware that you sign up for email updates on local information from the following website www.bleasbycommunity.uk . The community website is maintained and monitored by Bleasby Parish Council. PC information can be found on the Council website www.bleasbyparishcouncil.uk.

Going away?

Why not leave your pets with us?

Valley Boarding Kennels & Cattery



Situated between Bleasby and Fiskerton in the heart of the countryside

**** Kennels and catteries with outside individual runs ****

Please visit to see our facilities

Gypsy Lane, Fiskerton | Telephone: 01636 830268

www.valley.talktalk.net

BLEASBY JUBILEE PONDS – Our Land in the Breaking/Making

The extraction of gravel from Bleasby's historic and traditional riverside meadows initially started during World War II as a consequence of the need for vast volumes of aggregate for the construction of runways, pill boxes, air raid shelters and other defensive structures which are still in evidence today at nearby Newton and Syerston airfields. At that time the loss of some of the Trent Valley meadows to gravel extraction would hardly have been noticed compared to the vast acreages lost through the widespread ploughing up of meadows and pastures to become desperately needed arable land for food production as supplies of imported foodstuffs were progressively 'strangled' by the submarine wolf-packs of the Atlantic. However, since the 1930s 97%, nationally, of our meadows have been lost.

So what is a meadow? A meadow is an area of grassland which is maintained by traditional farming practices and allowed to develop over many years, becoming richer and richer with wild flowers over time. The connection to traditional farming methods is vital, as without them such meadows quickly lose their species and character. This means that, traditionally, there is an annual cycle: in late July or early August a hay-cut is taken, followed by the grazing of livestock to keep the grass short: the next spring, the livestock leave and the plants are allowed to grow and flower, setting seed in mid-summer before a hay-cut is taken again.

The joy of lying – at any age – amidst an envelope of feathery grasses and wild flowers, with insects foraging and butterflies dancing entrancingly above one's head (all against a backdrop of fleecy-clouded blue skies with "lark ascending" song swamping the senses and the accompanying insect background hum) can never be overstated by those fortunate enough to have experienced such delights. On the Jubilee Ponds we are endeavouring to restore the opportunity for all to enjoy this pleasure once more or even to 'taste' it for the very first time. To achieve this has taken much time and effort by the goodwill, labour and guidance of many residents and working parties over several years. On poor, gravel extraction-damaged land, this objective has proved problematic and much work has been done in levelling, sowing, mowing and managing its development over a number of years. Other concerns include the control of persistent meadow "weeds" such as thistles and docks, the domination of particularly vigorous flowers such as dog daisies and the invasion of the lower-lying land by more typical washland plants such as rush.

The timing and availability of mowing is very critical to the long term success of our meadow project as is the effective removal of the mowings themselves. Local farmers Peter Woodward (regrettably now deceased) followed by Chris Foster (very much alive) have voluntarily played a very critical part in this process and now we are placing our confidence in Richard Covill, our lengthsman cum contractor, to continue the tradition.

The continued extension of gravel workings from Bleasby to Gonalston over the past forty years has meant that the Trent Valley, and therefore the Jubilee Ponds, has gained many more wildfowl of a great variety but has lost previously familiar nesting meadow/pasture birds such as the skylark, yellow wagtail, lapwing and redshank. Changes in agriculture and land management mean that locally our only permanent grassland, in all its diversity, is only to be found at the edges of hedgerows, ditches and woodland, and those very few highly treasured fields where landowners are able and willing to leave them as historic gems of a past landscape or, of course, with considerable human commitment and management, around disused gravel pits such as our own Jubilee Ponds.

We hope that all readers have had – or will have – a chance to enjoy the very best of the meadow during June and July and that those young, fit and able, as well as interested and older enthusiasts will feel able to answer the call for more working party members as spring brings both beauty and management challenge to the Jubilee Meadow and Ponds in general.

Speaking of gravel extraction locally, twenty tons of gravel will soon be delivered to the site for the improvement and resurfacing of the footpaths around the Ponds – ironic that we seem to be putting back what we have taken out!

Peter Cast

WELCOME

Welcome to the Taylor family who have moved into the White House and the Shaws to Bretts Field, both on Gypsy Lane, and also to Sophie and Rob, now at Kemps Cottage.

Please let us know of any other new arrivals in our village.



Kemps Cottage Gibsmere

TRENT CHURCHES CHOIR

A big thank you to all our Bleasby friends who supported the Carol Concert at Rolleston on 11th December. The splendid sum of £586 was raised for the local REACH organisation which works with and supports people with learning difficulties.

We shall be singing at the Halloughton Plough Service on Sunday, 12th February, at 6pm.

On Passion Sunday, 2nd April, we shall sing Stainer's Crucifixion in Thurgarton Priory Church at 6pm. This sacred cantata, which we performed in 2008 and 2014, lasts an hour and contains some well-known hymns.

We hope you will be able to join us.

John King



Curry and Bingo Night
Friday 10th March – 7.30 pm
Thurgarton Village Hall



The Neelam Balti of Lowdham will be providing the food - tickets are £12 each which will include dinner and bingo cards.

Fully licensed bar and raffle.

Please join us with friends or family for a great social event and meal!

If you are interested in tickets, please contact Nicola Bennett on 07837 810487 or nicola.bennett@uk.experian.com

Proceeds will support Bleasby School

F O O T S T E P S

"Helping Bleasby School Move Forward"

Bleasby Diary of Events

Date	Time	Event	Location
Saturday 28 th January	7pm	Bleasby Local History Society Annual Supper	Village Hall
Saturday 4 th February	9.30am	Jubilee Ponds Working Party	JPs
Sunday 5 th February	10.30am	Service of Morning Praise	St Mary's
Sunday 12 th February	6pm	Plough Service	St James' Halloughton
Monday 13 th February	7.30pm	Meeting of Bleasby Parish Council	Village Hall
Sunday 19 th February	9.30am	Jubilee Ponds Working Party	JPs
Sunday 19 th February	10.30am	Benefice Service of Holy Communion	St Michael & All Angels Hoveringham
Tuesday 21 st February	7.30pm	Meeting of WI with Revd Phil White on the Dorcas Orphanage	Village Hall
Saturday 25 th February		Shrovetide Supper	Village Hall
Tuesday 28 th February	7.30pm	Meeting of Bleasby Local History Society with Ken Ogilvie on Who Lived in My House in 1901?	Village Hall
Wednesday 1 st March		Ash Wednesday	
Saturday 4 th March	9.30am	Jubilee Ponds Working Party	JPs
Saturday 4 th March	12.30	Lent Lunch	A venue to be publicised
Sunday 5 th March	10.30am	Service of Morning Praise	St Mary's
Friday 10 th March	7.30pm	Curry and Bingo Evening - Bleasby School Friends event	Thurgarton Village Hall
Saturday 11 th March	12.30	Lent Lunch	A venue to be publicised
Sunday 12 th March	9.30am	Service of Holy Communion	St Mary's
Monday 13 th March	7.30pm	Meeting of Bleasby Parish Council	Village Hall

Saturday 18 th March	12.30	Lent Lunch	A venue to be publicised
Sunday 19 th March	9.30am	Jubilee Ponds Working Party	JPs
Sunday 19 th March	10.30am	Benefice Service of Holy Communion	St Peter and St Paul, Upton
Monday 20 th March		Deadline for Bleasby News items	
Tuesday 21 st March	7.30pm	Meeting of WI with Wanda Adams on the Police Convoy	Village Hall
Saturday 25 th March	12.30	Lent Lunch	A venue to be publicised
Saturday 25 th March	From 3pm	Southwell Choral Society sings the complete Handel's Messiah	Southwell Minster
Sunday 26 th March	10.30am	Mothering Sunday Holy Communion	St Mary's
Tuesday 28 th March	7.30pm	Annual General Meeting of Bleasby Local History Society	Village Hall
Saturday 1 st April	9.30am	Jubilee Ponds Working Party	JPs
Saturday 1 st April	12.30	Lent Lunch	A venue to be publicised
Sunday 2 nd April	6pm	Trent Choir sings Stainer's Crucifixion	St Peter's Thurgarton
Monday 3 rd April		School Easter holidays starts	
Wednesday 12 th April	7.30pm	Voices in a Mystery - an Easter cycle by Paul Mein	St Mary's
Sunday 11th June 2017	Bleasby Open Gardens Day Put it in your diaries now - especially gardeners!		

MINSTER EXHIBITION

There's just about time to catch a spectacular art and photo exhibition called "I Witness" at Southwell Minster - on until February 25th. The exhibition features inspiring stories of projects facilitated by Christian Aid since the Haiti earthquake in 2010. The projects have enabled people to find hope and stability following this devastating event. It tells the story of three very special supporters who visited the work in Haiti.



Rural Idyll – the lane from just beyond Little Dower House to the Goverton junction circa 1900 – Corner Farm can be seen through the trees

“WHEN I’M CLEANING WINDOWS” (NOT !)

On Wednesday last week Ann was in our lounge playing bridge with some of her Probus friends, including Gill Belton and Mary Somerville. Not wishing to “get in the way” I moved myself in the dining room. I heard the door-bell ring and Ann answered. It was Martin Philpott, our village window cleaner.

A little while later I heard a crash at the back of the house. I thought it was Martin putting up his ladders. Wrong! It was Martin falling off his ladder from the upstairs window. We rushed round to find him lying on top of his ladder bleeding from a wound in his upper ankle area. Fortunately one of Ann’s bridge players was Mary Somerville who used to be a nurse. She quickly took control of the accident scene. We propped him up and covered him up with blankets and 999 was promptly called. Two paramedics arrived by ambulance after about 25 minutes. But just before they arrived we saw a yellow helicopter circling the house and on its fourth encircling we realised this wasn’t a coincidence. The ambulance pulled on to our drive, with the two paramedics jumping out - followed a few minutes later by the crew of the Air

Ambulance - the pilot, a doctor and two more paramedics! Martin, still lying prostrate, was clearly bemused by the scene unfolding - though clearly in pain. Gas and air was administered and accepted very reluctantly by Martin - who clearly thought he was imbued with sterner stuff. An inflatable splint was fitted and he was stretchered off - with a ride back to Queens in the ambulance (shame - he was hoping for a ride in the "chopper").

The latest news is that he suffered a broken leg and was still, at least five days later, in the QMC with a cage over the breakage and told he was likely to be there for some time. I don't think he will be up a ladder for a few months - but he says he is employing someone to keep the windows of Bleasby clean and sparkling in his absence.

We all wish him a speedy a recovery and no more heroics

Martin & Ann Shaw

NJN JOINERY

Phone: Nigel Newcombe
on
01636 525506
or
Mobile: 07837 235427

**ALL TYPES OF JOINERY
AND
MAINTENANCE WORK
UNDERTAKEN**



Ben Morgan

Painting & Decorating Services



T: 01636 831333

M: 07775 888851

E: ben@morganpainting.co.uk

Domestic

"We have used four different decorators over the last few years and every time, there has been a problem and the job has not been carried out to a satisfactory result. Ben was recommended to us and the job he did was fantastic and as we wanted. He is very professional in both his work and his personality. He offers very competitive rates and I would definitely use again and highly recommend."

Nicola & Nigel Bennett, Goverton

Rented

Office

Insurance

"Ben has just completed our kitchen extension and done a fantastic job, I would highly recommend his services. He is highly skilled and professional with in depth knowledge of paint and products, ensuring our walls are wipeable and the paint will not fade. We feel this is money well spent as our decoration will stand the test of time in a heavily used kitchen."

Janine and Chris Ford, Southwell



BenMorganPainting&Decorating

February Church Services in the West Trent Group

(HC = Holy Communion MP = Morning Praise EP = Evening Prayer)

	Bleasby	Halloughton	Hoveringham	Morton	Rolleston	Thurgarton	Upton
Sunday 5 th	10.30 MP		6pm EP	9.00 HC	10.30 MP	10.30 MP	10.30 HC
Sunday 12 th	11.00 HC	6pm Plough Service	10.30 MP	10.30 MP	9.30 HC	10.30 HC	10.30 MP
Tuesday 14 th							10.00 HC
Thursday 16 th							4.00 Zip Bam Boo
Sunday 19 th			10.30 Benefice HC				
Sunday 26 th		9.00 H C	10.30 MP	10.30 HC	10.30 MP	10.30 with Methodists	10.30 MP

March Church Services in the West Trent Group

(HC = Holy Communion MP = Morning Praise EP = Evening Prayer)

	Bleasby	Halloughton	Hoveringham	Morton	Rolleston	Thurgarton	Upton
Ash Wednesday March 1 st				7pm			
Sunday 5 th	10.30 MP		10.30 MP	9.00 HC	10.30 MP	10.30 HC	10.30 HC
Sunday 12 th	9.30 HC	6pm EP	10.30 HC	10.30 MP	11.00 HC	10.30 MP	10.30 MP
Tuesday 14 th							10.00 HC
Thursday 16 th							4.00 Zip Bam Boo
Sunday 19 th							10.30 Benefice HC
Sunday 26 th Mothering Sunday	10.30 HC		10.30 MP	9.00 HC	10.30 MP	10.30 with Methodists	10.30 MP

Please check notice boards for late changes and for Ash Wednesday Service.

ACADEME ROOFING

Quality Roofing Services



NOTTINGHAM'S NUMBER 1 ROOFING PROFESSIONALS

CALL OUR OFFICE ON:
0115 950 6444

“Our reputation is built
on **QUALITY**, first class
customer service, reliability
and professionalism”



Business Directory
Registered Member



LOCAL AUTHORITY APPROVED
ROOFING CONTRACTORS

**All Areas of Nottinghamshire covered
CALL TODAY!**

- Slate & Tile Roofs
- Single Ply Membranes
- Flat Roofs
- Guttering, Soffits and Fascias
- Chimneys Re-Pointed
- Industrial Roofs/Domestic
- Specialists in all lead work
- Re-roofs & New Roofs

OVER 30 YEARS EXPERIENCE • FREE ESTIMATES

www.academeroofing.co.uk • office@academeroofing.co.uk

23 • Little Tennis Street • Colwick • Nottingham NG2 4EL

WHO KNOWS YOUR BUSINESS?

At January's Safer Communities Group meeting we were alerted - and reminded – of the need to keep our personal and bank details safe and to give no information away to cold callers at the door, on the telephone or by any electronic computer link. Locally, in the villages around Southwell, there have been a number of attempts to defraud people. Calls have been made to homes asking for bank information under the guise of checking lost bankers' card details, seeking standing order arrangements for apparently worthwhile charities and seeking financial help for distressed and desperate people!

You may not consider yourself vulnerable to such scams but there may be members of your family or neighbours who are. Even the most unlikely people have been caught out by increasingly convincing scams, seemingly from authentic organisations. You are well advised to check the number of the caller and treat 004, withheld numbers or international codes with caution. If you are not currently able to do this, seriously consider ensuring your mainline phone has a facility to see the number calling or even changing the phone if it doesn't have that facility.

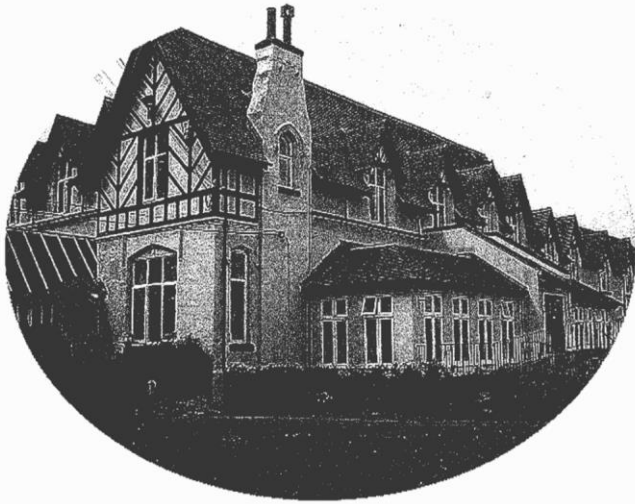
Even letters apparently bearing the Newark and Sherwood DC address have been posted to homes - possibly sent with mischievous intent but potentially for more sinister reasons. If **any** kind of communication seems in the least unusual, suspicious or worrying, never respond to it directly and always check via the published contact number of banks, offices or organisations to ensure its authenticity when it purports to come from them. If there is no means of checking, ignore it as it may well be some kind of scam – inform the police or your community safety contacts (as below) of such occurrences.

Another matter of concern raised at the last Parish Council meeting is the casual approach of some delivery drivers who leave packages outside doors without even bothering to check that the owner is at home. Parcels that are left - and unsigned for - are the responsibility of the delivery company but the 'dumping' of parcels on the doorstep makes not only the parcel itself tempting but also suggests that the house might be unoccupied.

An attempted burglary at Thurgarton in mid-January was prevented by the setting off of alarms, a neighbour's rapid action with a 101 call and a very effective response by the police which was commended by the house owner.

If we are all that little bit more cautious about unexpected callers and more suspicious of unusual activity around the parish then "us and ours" should remain safer.

Peter Cast 830284 and Derek Whitman



Hazelford

The Provider of Quality Care

Our home is situated in a beautiful location with open views of the river and surrounding countryside. With lovely gardens and an abundance of wildlife, this makes Hazelford a delightful location for our residents, to some of whom we offer a short break; for others we become their home.

We pride ourselves in offering a home from home environment with an excellent ethos whereby our residents are involved in the decisions we take. We focus on our residents' aspirations, ideas, views and suggestions.

We have a person centred approach to the care of the residents: this approach is vital to ensure the best possible outcome and wellbeing.

Dementia care is a specialist area: we ensure with sensitivity that the resident is supported continually with person centred care planning, reinforcing daily the aspects of their lives they enjoy to ensure wellbeing and pleasures on a daily basis as, sadly, the previous day may be forgotten.

Our aim is to offer stimulating activities, with one to one time for those who may have dementia: we specialise in this area and our approaches create a relaxed harmonious environment for all.

Our bedrooms are large with views over the countryside and offer a choice of colour and furnishings, personalising them to suit our residents' preferences and choice.

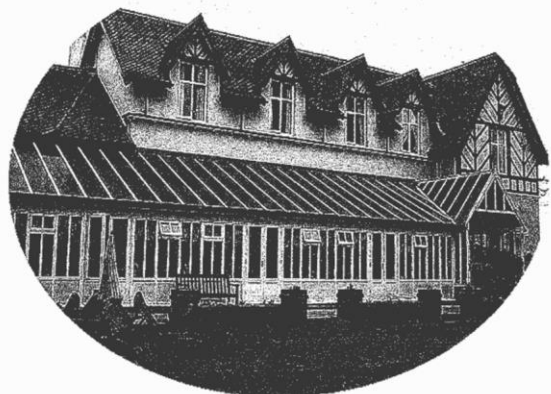
Please feel able to visit our home at any time – a warm welcome awaits you. We encourage families to also have an input into the plans the home may make. We hold family and friends of the home evenings.

With spring and summer comes along a plan of social events: for the summer an annual garden party, summer fair and schedule of outings to various venues.

HAZELFORD

**Boat Lane
Bleasby
Nottingham
NG14 7FT**

Tel: 01636 830207



HYDE BARKER

WORLDWIDE TRAVEL & ADVENTURE



**2009 LINE
NEW ZEALAND
SPECIALIST**

Tel: 01636 816 262

www.hbtravel.co.uk | 1 King Street, Southwell



ABTA
ASSOCIATION
OF
BUS
TRAVEL
AGENTS

BLEASBY GARDENERS SHINE! THEN AND NOW

Thinking, as we are, of this year's Open Gardens day I had a look to see what John Holmes (19th century diarist of the Old House) had to say about gardens in Bleasby and this is one of his musings.

"The inhabitants of this village is blessed, with neat gardens and good orchards, by yielding an abundance of delicious fruits which serve for the wants of their own table, as well as a beneficial supply for the market. What can be more pleasing to the eye of the owner, than to behold his orchard, all fair and ruddy, bowing down beneath its own delicious burden."

We can, I am sure, do as well as our forebears – we may not all have orchards but we all have gardens where are displayed colourful borders, impressive shrubberies, magnificent trees and, yes, quite a lot of wonderful fruit trees! Let us know if you would be willing for your garden to be part of this year's garden festival.

Contacts are Lynda Ogilvie, Viv Mayfield, Jenny Sterland, Rachael Andrew and Barbara Cast.

THE LAST TIME

From the moment you hold your baby in your arms,
you will never be the same.

You might long for the person you were before,
When you have freedom and time,
And nothing in particular to worry about.

You will know tiredness like you never knew it before,
And days will run into days that are exactly the same,
Full of feedings and burping,
Nappy changes and crying,
Whining and fighting,
Naps or a lack of naps,
It might seem like a never-ending cycle.

But don't forget ...
There is a last time for everything.
There will come a time when you will feed
your baby for the very last time.
They will fall asleep on you after a long day
And it will be the last time you ever hold your sleeping child.

One day you will carry them on your hip then set them down,
And never pick them up that way again.
You will scrub their hair in the bath one night
And from that day on they will want to bathe alone.
They will hold your hand to cross the road,
Then never reach for it again.
They will creep into your room at midnight for cuddles,
And it will be the last night you ever wake to this.

One afternoon you will sing "the wheels on the bus"
and do all the actions,
Then never sing them that song again.
They will kiss you goodbye at the school gate,
The next day they will ask to walk to the gate alone.
You will read a final bedtime story and wipe your last dirty face.
They will run to you with arms raised for the very last time.

The thing is, you won't even know it's the last time
Until there are no more times.
And even then, it will take you a while to realise.

So while you are living in these times,
remember there are only so many of them
and when they are gone, you will yearn for just one more day of them.
For one last time.

Author Unknown

BLEASBY'S BUS SERVICE – USE IT OR LOSE IT!

The Travel Wright bus service which runs through Bleasby on Tuesdays and Thursdays, generated solely because of the actions of a few individuals in Bleasby and Bleasby Parish Council, with the support of our County and District Councillors, has been running now since 11th October. It is a free bus and, although named the MediConnect (for funding purposes) it is for the use of everyone for all activities in Southwell. It is on a nine month trial and, if it is not well used, we will lose it!

Set out below is the timetable – please think about taking the bus to Southwell or to Lowdham rather than getting out your car. It will save you money, help prevent overuse of fuel, give you a chance to chat as you go, provide a new perspective of the countryside and villages as you take your journey and, more vitally, keep the service going for those who don't drive or have no access to private transport.

Lowdham to Southwell				
Lowdham Main St near Medical Centre		1010	1220	1345
Lowdham Main St near the Magna Carta		1013	1223	1348
Lowdham Station Rd near the station		1014	1224	1349
Caythorpe Main St	0906	1017	1227	request
Hoveringham Main St/Boat Ln junction	0910	1021	1231	request
Thurgarton Bleasby Rd	0917	1028	1238	request
Bleasby Main St	0921	1032	1242	request
Fiskerton Main St near Post Office	0926	1037	1247	request
Morton Main St	0929	1040	1250	request
Southwell Church St by Minster	0933	1044	1254	
Southwell Ropewalk by Medical Centre	0935	1046	1256	

Where marked "request" the bus will stop for setting down only

Southwell to Lowdham			
Southwell Ropewalk by Medical Centre		1135	1300
Southwell Church St by Minster		1139	1304
Morton Main St		1144	1309
Fiskerton Main St near Post Office		1147	1312
Bleasby Main St		1153	1318
Thurgarton Bleasby Rd		1156	1321
Hoveringham Main St/Boat Ln junction	0953	1203	1328
Caythorpe Main St	0957	1207	1332
Lowdham Station Rd near the station	1001	1211	1336
Lowdham Main St near the Magna Carta	1003	1213	1338
Lowdham Main St near Medical Centre	1006	1216	1341

*St Mary's Nave
circa 1865*



*St
Mary's
Nave
circa
1919*

Whilst every effort is made to ensure accuracy, the editorial team cannot accept responsibility for errors or omissions in articles appearing in Bleasby News. The views expressed in Bleasby News are not necessarily those of the Editors nor of Bleasby Parish Council. Bleasby News is distributed by local volunteers to whom we remain very grateful. Printed by Toot Hill School Reprographics.



We have Ballet, Modern and Tap
Dance Classes in Fiskerton for all
ages!

Why not let your Precious Princess or Playful Pirate take their
first steps in to the Magical World of Ballet! With our Princess
and Pirate Ballet class for ages 3 and over!

We have classes for adults too! Zumba and
Tap

For more information please visit our
website



www.attitudedanceschool.com
info@attitudedanceschool.com

07974 745740



Come and join us
for



with



Wednesday 7.30 - 8.15pm
At The Arthur Radford Hall
Fiskerton cum Morton

For more information visit www.attitudedanceschool.com
Or call 07974 745740

ROB BROWN LTD PLUMBING AND HEATING

MOBILE 07973890499

NOW BASED IN BILSTHORPE

email robinb9@gmail.com
more than 20 years experience

INSTALLATION SERVICE & REPAIRS
OF DOMESTIC GAS APPLIANCES &
HEATING & HOT WATER SYSTEMS

ALL PLUMBING WORK UNDERTAKEN
SMALL BUILDING WORKS
AND PROPERTY REPAIRS
ELECTRICAL REPAIRS

DO YOU RENT PROPERTY?
WE DO LANDLORD,S GAS CERTIFICATES
MAINS PRESSURE HOT WATER
Fully insured /no call out fee



Your local Hearing Care Specialists

0115 961 8351

FREE HEARING CHECKS

EAR WAX REMOVAL

TINNITUS SUPPORT

HOME VISITS

Whether you are looking into hearing issues for the first time or are struggling with your existing hearing aids then **Correct Hearing can help.**

We are a family run and owned independent practice, with over 30 years experience.

Call today for an informal chat or to request your FREE Hearing Guide 0800 368 47 47



Sarah Vokes

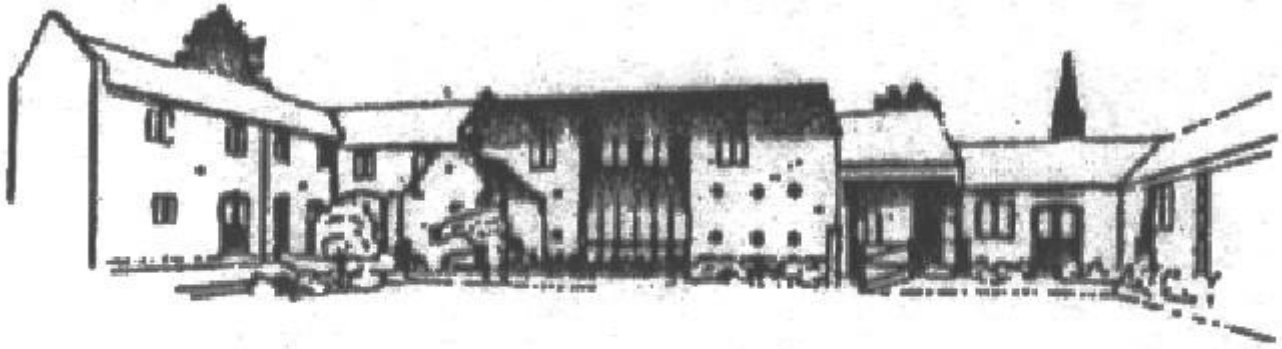


Damian Eyre

Web: www.correcthearing.co.uk

Email: info@correcthearing.co.uk

242 Oakdale Road, Carlton, Notts, NG4 1AD



THE BYARS

A small, family owned and managed, independent Care
Home situated amidst the rural landscape of the Trent
Valley

The highest quality care in the highest quality
accommodation

Our home offers long and short term care for the elderly

Viewing welcomed. Further details on request

THE BYARS

· CAYTHORPE · NR. LOWDHAM ·
NOTTINGHAMSHIRE · NG14 7EB

REGISTERED NURSING HOME

Tel: 0115 9663981



News & Events

**Chinese Night - Thursday 2nd February
5.30pm to 9.00pm**

**Curry Night - Thursday 23rd February
5.30pm to 9.00pm**

**Fish Night - Thursday 2nd March
5.30pm to 9.00pm**

**Curry Night - Thursday 23rd March
5.30pm to 9.00pm**

**Mother's Day - Sunday 26th March
Lunch served from 12.30pm to 4.00pm
(*Booking highly recommended*)**

**Takeaway Menu Available EVERY Wednesday
Pizza, kebabs, fish/scampi/cheeseburger & chips, steak pie
Served from 5.00pm to 9.00pm
(*Normal menu also available*)**

**Food Available
Wed 5.30pm – 9.00pm
Thurs/Fri/Sat 12.30pm - 3.30pm & 5.30pm - 9.00pm
Sunday Lunch - 12.30pm - 4.00pm
(*Booking highly recommended*)**

QUIZ NIGHT every Sunday at 8.30pm

***To reserve a table call 01636 830283
www.thewaggonbleasby.co.uk***



The Waggon and Horses Bleasby