

BLEASBY NEWS



BLEASBY OPEN GARDENERS

AUGUST 2015

BLEASBY OPEN GARDENS



2015



Welcome to the August Edition of Bleasby News

The school holidays are now upon us and our best wishes go to all our young families for happy times, to youngsters transferring to secondary school in September, and to those going on to higher education or the world of work. It is perhaps a good time to remind youngsters that the school grounds will be open as usual during the holidays providing a safe place to play games including ball games on hard surfaces and on grass (but see the warning regarding swimming at the Jubilee Ponds on page 5). In the past, two-week summer play schemes were organised and there were hopes that this might be revived this year but this has not been possible. This is not the only facility that has been lost to the village in recent times. Many of us still mourn the loss of the village post office and in spite of some dialogue with head office and a willingness on their part to provide an outreach service, no progress has been made. Please let us know if you would find a mobile service useful (as in a neighbouring county) or have other suggestions to make concerning an outreach service. How much of an inconvenience is the loss of a central post box? Should it be necessary to go to Southwell or Fiskerton to post anything bigger than a standard letter? It is not all loss, however. Very young children and their parents and carers are benefiting from the setting up of a weekly meeting place in the village hall, and the Glebe Field provides us with an open space at the heart of the village for all to enjoy, for play and for village events. We have retained a skeleton bus service and improved train services. The new tram link will eventually make the Park and Ride to QMC a much better option. Nevertheless, we need to be alert to any further loss of services and facilities in the village which affect those without transport or necessitate an increase in journeys and traffic.

Please send your articles etc for October's Bleasby News by 13th September to:-

Rachael Andrew - Sutton House / pran@suttonhs.fsworld.co.uk or

Barbara Cast - Little Dower House / barbaracast@btinternet.com

Your Editors, Rachael, Barbara and Sophie

We also must say a big thank you to Chris Bennett, Peter Cast and Ken Ogilvie who have provided so many of the wonderful pictures in this edition of the Bleasby News

Bleasby News is published by Bleasby Parish Council and distributed by local volunteers.
Printed by Toot Hill School Printers

Whilst every effort is made to ensure accuracy, the Editorial team cannot accept responsibility for any errors or omissions

Bleasby Parish Council News

The newly elected Bleasby Parish Council has now met on three occasions since 7th May, at one of which the new Parish Clerk was formally appointed. Her name is Belina Boyer and she is an experienced clerk who we anticipate will greatly assist us in finding our feet and moving forward in our support of our village.

There have been a few loose ends from before the election which we needed to address and at the meeting on Monday 13th July we made good progress on aspects such as the positioning of the defibrillator, a strategy for the solution of complications arising from the joint usage of the Jubilee Ponds, and the completion of legal requirements for Council ownership of Ferry End.

Our first major initiative will be the creation of a new parish plan to follow the last one which was produced ten years ago. We hope very much that all of you will be involved in this important project designed to help shape the future of the Parish of Bleasby, Gibsmere and Goverton.

You will notice that Martin, our lengthsman, has made good progress recently, for instance, we can see the seat on Goverton Hill again! He now has a comprehensive schedule of work – but please let me know if there is anything you feel needs his attention – if it is within his terms of employment we shall certainly try to accommodate it into his schedule.

Each councillor has taken on responsibility for various aspects of village life – some are representing the council on committees, others are to keep an eye on amenities, others to liaise with, for instance, the school. A list is at the end of this report.

Our agendas, minutes and other documents are displayed promptly on the noticeboard at Gypsy Lane corner and you can also find them on the Newark and Sherwood District Council website at newark-sherwooddc.gov.uk/bleasby/.

The Parish Council is always very pleased to hear from parishioners about ideas to enhance Bleasby, Goverton and Gibsmere and also about any concerns you may have. Please come along to a meeting for a chance to speak to councillors about something you feel we should know about.

Peter Cast, Chair (830284)

Councillor Responsibilities

Jubilee Ponds Management Committee – Councillors Chris Foster and Peter Cast

Footpaths and Bridleways – Councillors Chris Foster and Andrew Goodwin

Public Transport matters – Councillor Andrew Goodwin

School Liaison – Councillor Charlotte Gent

Snow Warden – Councillor Andrew Goodwin

Planning Liaison – Councillors Steve Andersen and Rachel Horsley

Flood Advisory Group – Councillors Chris Foster and Peter Cast

Glebe Field Advisory Group – Councillors Steve Andersen and Charlotte Gent
Village Hall Management Committee – Councillor Michael Coombs
Public Relations – Councillors Peter Cast and Rachel Horsley

Sport in 19th Century Bleasby

Another short extract from John Holmes' diary - 1819

“A cricket match was play'd in a meadow, belonging to Mr William Horspool, near the River Trent, between Southwell and Ratcliff clubs, which was won by the latter at one innings. Also another game was played between Bleasby and Fiskerton clubs, in a meadow at Fiskerton on Tuesday the 26th October this year which was won with ease by Bleasby. Bleasby first and second innings amounted to 147 runs and Fiskerton ditto 84 runs.”

The Non-Gardener (Treasures of a Secret Garden)

Here I sit, in a bower
Of gooseberry and carrot flower
And, with satisfaction, pick
These bristly fruit which grow so splendid
In this garden unattended.

How delicious here to see
Such a natural harmony,
Weed and berry unimpaired,
Every patch of brown earth shared
By a multitude of roots.

Revolution in colour, riot in scent,
Leaf and shoot and flower blent,
Seeds a'turmoil cleave the soil.
With wanton grace, blossoms burst,
Wildly Eden's here rehearsed.

I found this year, treasures here
Which, if the plot had been much weeded,
Would have disappeared unheeded;
Madder, pansy; flowers to please
And swell the honey haze of bees.

So cast away the gardening tool,
Banish the gardener, let nature rule.
No human face should leave a trace
On this fruitful, life-full, scene,
This miracle of green.

Barbara Russell Cast

Bleasby Open Gardens

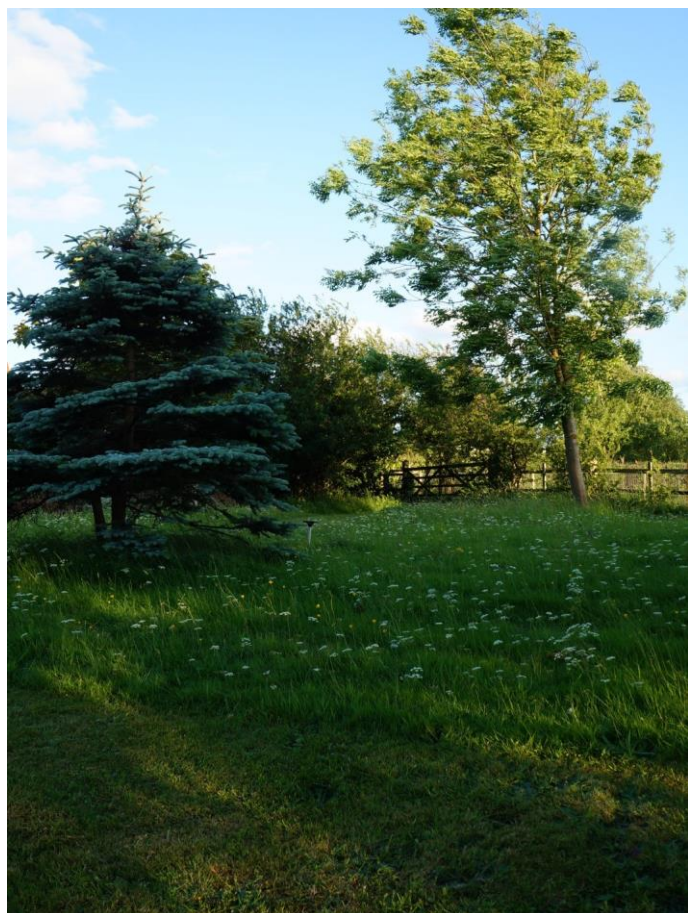
On a beautiful, sunny day in June, Bleasby was awash with people arriving to visit eight gardens and a traditional meadow in the village. Over 450 adults came to visit the gardens, enjoy a cup of tea and delicious home-made cakes in the village hall, and visit our lovely church, resplendent with delightful floral displays, created by many of the social groups in the village. There were also many children with their families and a fair few dogs as well!

It hasn't been an easy year for gardeners, but we could not have been more fortunate with the weather, and everything looked splendid in the sunlight. The event raised just under £3000, which is to be split between St Mary's Church and Bleasby Village Hall. This is an amazing sum, and we are most grateful to everyone who helped: the people who spent time putting the displays in the church together, those who made cakes, those who served the tea and cakes, the car park attendants, and of course to the garden owners for whom it is not just a short burst of activity, but a full time occupation. Their reward was the oohs and aahs of visitors who were justifiably enchanted by the lovely and varied gardens which were available to visit.

The organisers would also like to thank Colin at the pub, who not only kindly permitted the car park to be used for visitor parking but also put on a delicious supper for weary workers, which was very welcome.

The day showed our lovely village at its best, and you will find more beautiful pictures throughout this edition of Bleasby News.

Lynda Ogilvie



TO LET

LAKE DISTRICT HOLIDAY COTTAGE

Borrowdale Road, Keswick

3 Bedrooms | Sleeps 6

Fully refurbished holiday cottage with gas central heating,
open fire place and private parking

Views overlooking the fells, front and rear gardens,
Superb location

**For further details please ring
01636 830209 | 07812 101303**

**A. Rickett & Son,
Bleasby
Builder & Contractor
Tel: 01636 830468**

Bleasby Jubilee Ponds

Oasis and Dynamo

Many might see the Ponds as a natural haven of beauty and tranquillity in an increasingly pressurised environment but it exists as much as a result of human intervention – past and present – as do our fields, hedges, verges and woods.

The Oasis - Summer is here at last and the fact is well 'flagged' on the Ponds where the yellow flag (iris) growing on the pond margins has proudly punctuated and thronged the 'green scene' – each one with its eye-catching, triumphant and unabashed startling colour and fleur-de-lis form. Nearby and just off-shore and just out of reach, the waterlilies lie in wait for the delight of the diligent observer and the attentions of resting damselflies. Meanwhile our rather modest and unassuming orchids grow discreetly amongst bankside vegetation, revealing to only the most curious and determined the delights of their floral complexity – each specie with its very own characteristic flower structure that marks it out from other species of their kind.

The white-rimmed dog daisies of the meadow swamp the eye in a bold statement of glorious unity providing the "icing on the cake", topping our ever-changing sequence of colourful stages and upward steps of wildflower prominence.

This year we have also been beautifully blessed in Bleasby by other wild flower meadow shows upon the Glebe Field, churchyard and, not least, along our roadside verges. Ongoing management at the right time under the right conditions should provide us with repeat, treat performances year on year.

Mallard ducklings are now well grown and are becoming a sombre-feathered match to their still attentive mothers, whilst the still downy, buoyant and recently hatched young of the tufted ducks match their maternal model only in their earnestness in diving in unison beneath the water to accompany her on her foraging dives – only to prematurely bob back up again to the surface.

Buzzards continue to wheel overhead, green woodpeckers break the tranquillity with their strident calls and melodies are still being sung by our summering blackcaps, whitethroats and reed warblers.

A real haven and "heaven on earth".

The Dynamo – The Jubilee Ponds, along with Gibsmere's Pickerell Play and Trout Lake, are at the hub of a network of natural corridors radiating out into our parish. The linking hedgerows, associated verges, streams, mature tree lines, gardens and even prevailing winds all allow the wildlife – animal and plant, nurtured and encouraged on the Ponds – to flow, drift and move outwards to enrich our local countryside. The Ponds are a storehouse of local and native wildlife than can prosper and reproduce and thereby restock, rejuvenate and revitalise our countryside. There are other secondary nature reserves of course - sources that are also valued, cared for and managed such as St Mary's churchyard, the Glebe

Field and the verges from Goverton to High Cross, plus the wilder reservoirs such as Halloughton Dumble, the Trentside Banks and unspoilt meadows and grasslands that have not been cultivated for hundreds of years and are still grazed and managed as in time immemorial. In such places badgers dwell, hares lie and roe deer roam.

Thanks to generations of inhabitants of Bleasby, we can all enjoy this variety of country scene and experience within easy walking distance of most of us. It is in our hands for now – let us leave it richer for our stewardship.

Footnote – The Jubilee Ponds Management Committee are setting about raising local awareness and appreciation of the Ponds and will be putting in train several initiatives to bring a greater understanding of the complexity of its management for the benefit of all users and interests.

As part of the above initiative could we ask if you have any photographs that you could offer for inclusion in our “Story of the Jubilee Ponds” album? They could be earlier photographs that show the gravel workings – or even the fields and building that once appeared there. Perhaps you have shots of working or visiting parties or seasonal images that caught your eye. We know that several people have been ‘focusing’ on wild flowers and butterflies. Are you one of those keen-eyed ‘close-up’ photographers? Please let us know of any of your JP treasured images which you would be willing to share.

Peter Cast



ORCHIDS AT JUBILEE PONDS

Clothing Appeal – Visitor from Chernobyl

For the first three weeks of the summer holidays we will be hosting a young girl from Belorussia named Dasha as part of the Chernobyl Children Life Line charity. The children come for respite from the contaminated land they live in and it is expected that each trip like this allows their immune system to recover and is likely to add a year to their life expectancy. The charity has a shop in Clowne in Derbyshire that sells donated clothing in order to fund their work. They also allow the children visiting from Belorussia to choose their own clothing to take home with them. Unfortunately this year there are several girls of the same size so most of the clothing that would fit Dasha has already gone. We have some items that my eldest, Hope, has grown out of but if anyone has any girls' shoes or clothing that will fit her that they no longer need they will be greatly appreciated and received. To give you an idea of what she needs, Dasha is 8 years of age, is 1.26m tall, weighs 22.5kg, and wears size 13 children's shoes. Do not worry if the clothes are not quite right for her - she has an older and a younger sister. Also if anyone has any old suitcases they no longer need, they are also a great help to the children. They usually get packed off with 2 cases full of clothes but are so poor they cannot afford cases of their own. They do need to have wheels on though as the group have a long walk at the airport to their check-in desk and only a couple of people from the charity to help them. You can drop them at my house at 7 Hawthorn Close, Bleasby (off Elmore's Meadow) or email me at janineandchris@tiscali.co.uk and I will come and collect them.

Thank you in anticipation, Chris Barnes

Centenary Wood – The Barnes Family Visit

We recently hosted a party for my mother's 80th birthday which was arranged to coincide with a visit from New Zealand of my mother's brother and his wife, my Uncle John & Aunty Jan. As it turned out, my mother agreeing to allow us to host the party must have been a moment of precognition as 2 weeks before she managed to break her ankle barrowing concrete around her garden. A few months earlier my children Hope, Eloïse & Lauren went with Janine to plant an oak tree in the Centenary Wood in memory of their great grandfather, Richard 'Wilf' Seaman who served as a firefighter in the blitz in spite of being totally blind in one eye. He knew this area very well as he was born at Epperstone. He worked on the construction of the new Gunthorpe Bridge between the wars, then after became a landscape gardener, so would have really liked what is being done in the woods. The girls managed to keep the planting of the tree and the dedication secret so that we could surprise my mother, Uncle John and one of their other sisters, my Aunty Pat, before they all attended the party at our house. We had arranged to meet Peter Cast in the woods and expected he would just read the dedication and show us where the tree was, however, as the comment below from my Uncle John shows it wasn't quite that simple.

“Everyone, including the children, had kept the whole thing a real secret until that day and when the reason for our visit was revealed we were all thrilled and very moved, especially since we were there to see the stout young oak tree planted in memory of my father. It was all made so poignant by the way Peter Cast unfolded the “mystery” to us with the use of World War 2 props and an inclusion of the children in the tableau. Peter was so amiable and responsive to everyone’s comments and questions that we all felt very much at ease and the whole occasion, albeit on a cold and damp afternoon, was heart-warming. A really big thank you must go to Peter for all the effort he put into this surprise event and also to all those involved in the Centenary Woods project, including my nephew Christopher & his family. It is a brilliant concept and a most worthwhile project.”

First of all Peter had to wait for 30 minutes as my mother and Uncle John were late after being delayed on the telephone by their other sister. Then out of his bag he produced 3 WWII firemen's helmets for the girls to wear and told everyone present about the project. He then produced a copy of my grandfather's birth certificate showing his birth was registered 4 years after his birth at Southwell, and had even done some research into my grandfather's name. He then read the dedication and even cut the weeds away from my grandfather's tree so my mother could see it from her position in her wheelchair.

So a huge thank you to Peter not just for the wonderful presentation he did on the day but for all the work he has done around this project to make it possible. It meant a great deal to my mother, my uncle and aunt that there will be something that may be there for hundreds of years in dedication to their father and they intend to make a pilgrimage to the Jubilee Ponds whenever they are in the area to see how the tree is progressing.



The Book Club reads “The Goldfinch” by Donna Tartt

864 pages! We'll never manage that! But after two months, most of us had reached the end. There were varied and contrasting opinions expressed at our meeting, but without exception the general opinion was one of admiration for the quality of the writing. The variety in style, humour, and the immaculate description of scenery and situations made it a totally absorbing read. The convoluted plot concerned Theo, a young boy, who through no fault of his own grew up with the double burden of the grief caused by the death of his mother in a terrorist bombing, and the guilt of the knowledge that a parcel entrusted to him by a dying man was a priceless painting stolen from the gallery where the bombing had taken place. His life thereafter was chaotic, and the novel charted his descent into the lowest depths a human can fall to. Donna Tartt's brilliant characterisation brought to life the dysfunctional Barbour family with whom he lived for a while: Larry, the totally inadequate father who took him to share his 'on the edge' lifestyle in Las Vegas; and Boris, the young Russian boy he became entangled with, and who led him into the dark amoral world of drugs and gangsters. The one stable and reliable anchor in his life was Hobie, the furniture restorer, who inadvertently gave Theo the means to start his own illegal activities. Despite his innate lack of morals, Boris was not heartless, and indeed, most of the group found him a very likeable character. At great personal risk, he was able to rescue Theo from total disaster. With the realisation that Boris actually loved him, and with the shining honesty of Pippa, a girl also involved in the bombing and with whom Theo had always thought he was in love, the means to start searching for his own redemption became open

to him. The last few pages of this great novel are given over to Theo's interpretation of the meaning of life. If you read pages 857 to the end, your understanding of the importance of beautiful things, (such as the little painting of a goldfinch by Fabritius, the inspiration behind the book), within the whole framework of existence, will be enhanced. To quote Kamila Shamsie of The Guardian, "The last few pages of the novel take all the serious, big, complicated ideas beneath the surface and hold them up to the light. When plot comes to an end, she leads us to a place just beyond it – a place of meaning."

Diana Temperley

Swimming in Jubilee Ponds

Now that we are enjoying some summer weather, it seems a good time to remind young and not so young alike that swimming is not

allowed in the Jubilee Ponds for good reasons.

The ponds are very deep and contain hidden obstacles left from a time when excavations took place and warming waters have caused dense

weed to flourish in places. Some young people

have been seen swimming there and this will not, hopefully, be repeated.

'A garden is a lovesome thing, God wot!'



This line of poetry has been running through my head for weeks – prompted by the wonderful display of gardens on that beautiful Sunday in June. The hard work put in by so many people really paid off – resulting in a display of different styles guaranteed to satisfy every visitor. Inviting secret spaces, water features, broad sweeps of lawn, sweetly scented colourful borders, shady areas, sculpture enhancing the surroundings, and in one garden very close to me, wild flowers, butterfly beds, and experimental work in progress – in other words, weeds, compost, and nettles. And then of course there were the teas – for those of us who have been here a few years, the queue stretching out of the door was a reminder of the early days of Pedals.

But to return to the poem – I looked it up, as I had no idea what came next or even who had written it, and was quite surprised. It was written by Thomas Edward Brown, a Victorian scholar, teacher, poet and theologian. Born in the Isle of Man in 1830, he achieved a double first at Oxford, and then taught at Clifton College Bristol until he retired to concentrate on his writing. Much of his poetry was written in Anglo-Manx, the historic dialect of English spoken on the Isle of Man. His style, incorporating a distinct regional poetic form, interspersed with pauses and irregularity of rhythm, also featured a pious philosophy of life

unique to the islands, and earned him the title of 'Manx National Poet'. He died in 1897 at Clifton College, where he had returned to give a lecture. No doubt the pupils remembered that event better than the lecture.

I think the poem deserves to be quoted in full.

*A garden is a lovesome thing, God wot!
Rose plot,
Fringed pool,
Fern'd grot – The
veriest school
Of peace: and yet the fool
Contends that God is not –
Not God! In gardens! Where the eve is cool?
Nay, but I have a sign:
'Tis very sure God walks in mine.*

T. E. Brown 1830 – 1897

Diana Temperley



Congratulations to Alison and Alistair Collins of Brickyard Farm on the birth of their

New Arrivals!

daughter Sophie, a sister for Ella.

Church News

The village had a great day on June 7th, as you will read elsewhere in this edition, and the church too had a good day. It was looking its best, with most of the organisations in the village decorating parts of the church with flowers and items which illustrated the role or activities of that particular organisation. We had splendid displays from the WI with a miniature model depiction of the many activities it undertakes; from the Babies and Toddlers Playgroup; the Village Hall and Local History Society; and, quite beautiful and evocative, the Jubilee Ponds Committee. Thanks to all who contributed their time, creativity and flowers, many of which were from Bleasby gardens. An especial thanks to Lorraine Vickers and Doreen Morgan who were there to help and who added to the church display with their own lovely creations. Like the rest of the village, the church too had many, many happy visitors, as the stewards on the day can confirm.

Children in Year 2 from Bleasby C of E School came to church with their teachers on June 11th to learn about parables. After the children had heard the parable of the sower and joined in a discussion as to its meaning and relevance to their lives in school, we all went into the churchyard to sow seeds in various places. What we are hoping for are wild flowers in a patch of open ground, but if you discover radishes growing in the car park, stony ground is obviously more productive than the parable indicates! The children had learnt a new song for the occasion which we all enjoyed singing. We are grateful to Pam Thompson (Foundation Governor) for leading the session. We are looking forward to the end of term service when the whole school will gather in church to look back over the past year. We wish all the children well for the holidays, especially the pupils of Year 6 as they move on to secondary school.

On June 21st St Mary's was pleased to host the monthly benefice service. This was taken by the Area Dean, David Milner, who will be taking our Holy Communion Service on July 12th and leading the school end of year service on July 20th. This will be David's last service with us before the arrival of our new priest in charge. We have enjoyed the time he has spent with us and with the school and have learnt much from his ministry. His support, guidance and good humour during the interregnum has been much appreciated by the children, wardens and congregation.

We are very pleased that The Revd. Philip White has been appointed priest in charge of our group of seven churches. His installation service will be held on October 7th at 7.30pm at Hoveringham Church. He is currently working in two parishes in Scarborough, where he has been active in lay ministry training and working with young children. He is pleased to have a primary school on his new patch. Philip will be living in the vicarage at Thurgarton.

The Right Reverend Paul Williams was enthroned twelfth Bishop of Southwell and Nottingham on 27th June. He comes to us from London where he was Bishop of Kensington. On the morning of June 26th Bishop Paul attended a Holy Communion Service at Balderton and afterwards had breakfast with members of the congregation. His first services at Southwell Minster were ordination services on Saturday 4th and Sunday 5th July. James Pacey, who was Claire's student in 2014, was among those ordained deacon.

Wardens have responded to the Archdeacon's "Articles of Enquiry", a document which is designed to obtain information on the same subject across the archdeaconry. This year the questions were about changes to the building, its suitability for ministry and community use, its particular advantages, burdens associated with its upkeep and how it might be enhanced in the future.

Diana Temperley attended a conference on rural ministry as a follow-up to the discussions held by a benefice working party in response to the document "Released for Mission; Growing the Rural Church". On July 15th, Rachael Andrew and Pam Thompson are

to meet Emma Anderton, a diocesan school's advisor to discuss how to make the most of school visits to church

Rachael Andrew and Diana Temperley

Church Services in August and September

August

- Sunday 2nd 10:30am Morning Prayer
Sunday 9th 10:30am Holy Communion and Baptism of Emily Jadhav
Sunday 16th 10:30am Benefice Holy Communion at Morton
Sunday 23rd 9:00am Holy Communion BCP

September

- Sunday 6th 10:30am Morning Prayer
Sunday 13th 10:30am Holy Communion
Sunday 20th 10:30am Benefice Holy Communion at Rolleston
Sunday 27th 9:00am Holy Communion at Halloughton

During the interregnum it is advisable to check service times on notice boards as changes sometimes have to be made at short notice. Please also check notice boards for services, not published in this issue, which take place elsewhere in the group



CHURCH WINDOW BY ELAINE FRANCE

Anglesey Centenary Challenge

In September, six members of Bleasby WI are taking up the challenge to travel 160 miles from Bleasby to Llanfairpwll, Anglesey, where the WI began in 1915. They are travelling in pairs by whichever means they can without using money or their own vehicles, i.e. they are relying on their wits and/or the goodwill of others. This does not mean they can ask family or friends to take them! They are intending to raise money for the Nottingham University Children's Brain Tumour Research Centre (**CBTRC***) at QMC, through personal or group sponsorship. Two members are determined to hitch lifts with lorry drivers, two are hoping

to use their senior bus passes to journey in stages on local routes, and two are asking WI members from the six county federations on their route to give lifts of about 10 miles each.

If you would like to sponsor the whole party, please contact Monica Richardson, President (830231)

* **CBTRC** under Professor Richard Grundy is widely regarded as the national centre of excellence in the UK for brain tumour research. Research findings guide developments in diagnosis and treatment. Every year 450 children in the UK are diagnosed with a brain tumour. **CBTRC** is dedicated to improving the lives of young brain tumour sufferers and their families. Financial support from the public is vital to the continuation of this work.

ADVERTISING IN BLEASBY NEWS

Want to advertise your event or service and support your village at the same time?

What about an advert in Bleasby News – now more informative than ever and delivered to every household in Bleasby, Goverton and Gibsmere six times a year

Contact Rachael Andrew on 830296 or Barbara Cast on 830284

	Full page	Half page
1 issue	£20	£12
6 issues	£80	£60

If you have contacted or used one of the Advertisers in Bleasby News, please let them know where you heard about them!

Lifeboat Coffee Morning

Please come and join us for coffee on Friday October 16th at Bleasby Village Hall. We will be selling Christmas cards, wrapping paper and gifts in aid of the RNLI. There will also be a cake stall and a raffle.

Looking forward to seeing you there.

Ann Buckley

Thursday Lunch Club at Manor Farm Tea Shoppe

On Thursday July 2nd lunch club members celebrated Ann Border's 90th birthday. After lunch, cake and champagne were served. Thank you to Caroline and Andrew Goodwin and all the staff for going out of their way to make this a special occasion.

Members meet every Thursday at 12.00 for a two course meal followed by tea or coffee. Senior residents of Bleasby (and nearby villages) are eligible for membership. The price of the meal is currently £5. Please ask at the Tea Shoppe if you are interested in joining us.



ANN BORDER CELEBRATING HER 90TH BIRTHDAY

Bleasby War Memorial Projects

You will probably have seen that the work to complete Phase 1 of our War Memorial projects was completed just in time for the Bleasby Open Gardens and Church event that took place in June. This phase comprised the addition of three names to the Memorial that has long stood in the churchyard at St Mary's Church, the names being Private George Herbert Marsh of Bleasby and Private William Henry Brett Wales of Halloughton for the Great War, and Wing Commander William Graham for WWII. Funds were raised last

summer to complete this work but we had to wait for many months for the work to be carried out as, firstly, it was necessary to find a stone mason with the requisite skills and



interest to actually carry out the work, secondly to obtain permission from the Southwell Diocese for the addition of the names to the Memorial and, lastly, to wait for clement dry weather to enable the work to be actually carried out. Photographs better illustrate the process and skill necessary to complete this work, and we are most grateful to Michael Wright of D & M Stonemasons for his patience and professionalism whilst

carrying out this work. The finished result was there to be admired by the many visitors to St Mary's Church on the Bleasby Open Gardens day and since.

We are now moving on to Phase 2 of our projects which is the creation of a new memorial to record the names of the 19 young RAF Bomber Command aircrew who were killed here in Bleasby during WWII as a result of operational aircraft crashes. This is a more ambitious but equally worthwhile project, which may require total funding of c £8,000. We have already raised c £1,200 of this target and fundraising is ongoing through donations for talks, sale of bird nesting boxes, collection of loose change at the Waggon and Horses, and other donations. The design and location of this new memorial is still being developed, but we hope to be able to publish our final proposals by the end of this year after obtaining the necessary permissions etc.

We are planning a major fundraising event for the summer of 2016 - on August 20th to be precise, so please look out for posters advertising details of this activity in the autumn edition of Bleasby News, or at the Waggon and Horses or the Manor Farm Tea Shop. This event will be a Steam Train Excursion from Loughborough on the Great Central Railway, with our favourite local driver in command of the locomotive. The package will include a five course meal served on board the train in Pullman Coach luxury, and the opportunity to experience a ride on the locomotive footplate between station stops and learn a little about the skills of driving a steam engine. The train will comprise of three dining cars to enable children to join in the event, but the trip will only go ahead if we have at least 84 adult seats sold. Adult tickets are priced at £70, excluding drinks and travel to and from Loughborough. Child tickets are £30, including a child's meal. Special diet options are available by arrangement in advance.

We already have around 20 individuals who have registered an interest in taking part in this fundraising activity. If you would like to register your interest, please send an email indicating your indicative ticket requirements to bleasbybcms2016@btinternet.com.

Registering your initial interest does not commit you to purchasing the tickets. Registration is only to establish the likely level of interest in this event, and to enable us to firm up our plans.

We hope that you will support this event.

Ken Ogilvie



THE FINISHED WAR MEMORIAL AT ST MARY'S CHURCH

Bleasby Diary of Events

Date	Time	Event	Location
Saturday 1 st August	9.30am	Jubilee Ponds Working Party	Jubilee Ponds

Sunday 2 nd August	10.30am	Service of Morning Prayer	St Mary's Bleasby
Sunday 9 th August	10.30am	Holy Communion and Baptism	St Mary's Bleasby
Tuesday 11 th August	9.30am	Jubilee Ponds Working Party	Jubilee Ponds
Sunday 16 th August	9.30am	Jubilee Ponds Working Party	Jubilee Ponds
Sunday 16 th August	11am	Benefice Service of Holy Communion	St Denis Morton
Tuesday 18 th August	7.30pm	Meeting of Bleasby WI with Maggie Allen on Corsets, Camis, Swimsuits and Smiles	Village Hall
Sunday 23 rd August	9am	Service of Holy Communion	St Mary's Bleasby
Thurs 27 th – Mon 31 st August		Southwell Music Festival	Minster & other venues
Thursday 3 rd September		Autumn term starts	Bleasby School
Saturday 5 th September	9.30am	Jubilee Ponds Working Party	Jubilee Ponds
Sunday 6 th September	10.30am	Service of Morning Prayer	St Mary's Bleasby
Tuesday 8 th September	9.30am	Jubilee Ponds Working Party	Jubilee Ponds
Friday 11 th September		Deadline for October's Bleasby News	
Sunday 13 th September	10.30am	Service of Holy Communion	St Mary's Bleasby
Date	Time	Event	Location

Monday 14 th September	7.30pm	Meeting of Bleasby Parish Council	Village Hall
Tuesday 15 th September	7.30pm	Meeting of Bleasby WI with Wayne Brewin on John Bishop changed my life	Village Hall
Sunday 20 th September	10.30am	Benefice Service of Holy Communion	All Saints Rolleston
Tuesday 22 nd September	8pm	Meeting of Bleasby Local History Society with Richard Gaunt on The Women in their Lives; the 4 th and 5 th Dukes of Newcastle	Village Hall
Wednesday 23 rd September		BSFA AGM and MacMillan Coffee Morning	
Sunday 27 th September	9am	Service of Holy Communion	St James Halloughton
Wednesday 7 th October	7.30pm	Installation of Revd Philip White	St Michael's Hoveringham

**** The Jubilee Ponds really do need more person power
Please give your nature reserve a hand!**

Working Parties are regularly held on the first Saturday, the second Tuesday and the third Sunday of each month. You would be very welcome – there's plenty to do.

WELL DONE IAIN!!

Our congratulations go out to Iain Farquhar who has managed to raise over £10,000 with his biking challenge of cycling from John O'Groats to Lands End. Iain is raising money for the Intensive Care Foundation (ICF) and the profile of the Intensive Care Unit in Nottingham where he worked as a consultant for over 21 years.

You can still donate, or find out more information by visiting his JustGiving page www.justgiving.com/Iain-FarquharJOGLE

Your local Hearing Care Specialists

0115 961 8351

FREE HEARING CHECKS

EAR WAX REMOVAL

TINNITUS SUPPORT

HOME VISITS

Whether you are looking into hearing issues for the first time or are struggling with your existing hearing aids then **Correct Hearing can help.**

We are a family run and owned independent practice, with over 30 years experience.

Call today for an informal chat or to request your FREE Hearing Guide 0800 368 47 47



Sarah Vokes



Damian Eyre

Web: www.correcthearing.co.uk

Email: info@correcthearing.co.uk

242 Oakdale Road, Carlton, Notts, NG4 1AD

A Teddy Bears' Picnic

'If you went down to the Glebe Field today, you were sure of a big surprise... today's the day the teddy bears had their picnic!'

Bear wagons, bear decorating, bear tunes and bear snacks; it was a joyful occasion for the teddies and all their buddies.

Over forty people, not to mention their furry friends, were blessed with glorious sunshine and the Glebe Field was the ideal venue to sit and relax and also to play and have a sing-along!

This happy event was on Monday 29th June 2015 - hopefully it will be the first of many such happy times for Bleasby Playgroup.

Victoria Walster



Bleasby Playgroup meet every Monday at 9:15-11:15am in Bleasby Village Hall

We shall break over the summer holidays and be back on Monday 7th September
Everyone is welcome - £2 per family

Rhian Entwisle (nee Sterland) - 1956-2014

Rhian was christened Frances Rhian, but preferred her middle name. She was born in Scunthorpe, Lincolnshire, but lived in Brigg for the first few years. She had two older sisters, Alice and Jennifer, and a younger brother, John. As her parents, Frank and Mary, both worked, the children were cared for by a really nice lady called Margie, who lived in a large house with her three unmarried sisters. They kept a set of bagpipes in a glass case in the attic, which intrigued the children. Although the children could be a bit mischievous, they were generally well behaved.

Summers seemed long and sunny and holidays were invariably spent with grandparents who lived in a village in Upper Teesdale. Grandmother, Alice, had been born in Russia, before the Revolution, and her two sisters also lived with the grandparents, and talked animatedly in Russian much of the time.

In 1963 the family moved to The Grange, Bleasby, from Lincolnshire, as Frank had been offered a job with the Trent River Authority, based in Derby Road, Nottingham. Mary worked as a School Medicals Officer. They were joined by Frank's Mother, Margaret, a Welsh lady, who made very nice cakes.

The children all attended Bleasby School for a while. At the time, the headmistress was called Mrs Brailsford. She was very keen on the pupils learning poetry. School gym lessons were taken in the hall and the girls wore 'greens'. Radio programmes for schools were 'Singing Together' and 'Music and Movement' which were keenly participated in. Jennifer, Alice and Rhian joined the Church Choir and Sunday School (an added attraction was that the Vicar had a train set which could be played with afterwards). There was also a club called the Girls' Friendly Society.

Later, Jennifer moved to the Lilley and Stone High School in Newark and John and Rhian attended Highfields School, Newark. Alice moved to Colthurst House School, in Cheshire, which catered for children suffering from epilepsy.

Rhian joined Jennifer at Lilley and Stone, where she excelled academically and won Form Prizes. She was also musical and played the French horn. She represented the school in the hockey and tennis teams. The journey to school involved train travel as well as walks at either end, and sometimes weather and rail delays curtailed the trip. At the time there was a proper waiting room at the station, with a warm fire and a station master, who operated the gates. Rhian once left her French horn on the platform at Newark station which caused some consternation to Mary. The headmistress at Lilley and Stone was Miss Dibb, a very upright lady. She generally interviewed the mothers of the Girls, prior to admission, rather than the potential pupils.

Outside school hours, time was spent playing games and having adventures, such as the time when a skating excursion resulted in two broken limbs, a leg for John and an arm for friend, Jackie. Childhood can be a painful time. Sister, Alice, died tragically young, in 1973. Rhian also became involved, like many other youngsters in the village, with Bleasby Independent Evangelical Church, which was run by lay Pastor Grenville Wright, and gave many young people a good social and religious grounding in life.

Rhian gained 9 'O' levels with good grades and spent the final school years at Oakham School, which John also attended. (They rarely saw each other there.). She continued to play the French horn in various orchestras.

After 'A' levels Rhian decided to study French and Russian at Keele University, which she thoroughly enjoyed and where she made some good, lifelong friends. After graduating, Rhian came home to live in Bleasby and worked at various jobs, including pulling pints in the pub and domestic chores.

In 1980 she and Jennifer worked on an archaeological dig on Hambledon Hill, an ancient hill fort in Dorset. This entailed camping on a hillside, with showers once a week at Blandford Army Camp (well, you're only young once). It was such fun that she caught the bug and later travelled to the Orkney Isles. There she helped to excavate a brooch and there she met her future husband, David Entwisle.

David had ties with Nottingham, having studied at the University, and his sister lived in West Bridgford. They married in Bleasby Church in 1983 and moved to Kimberley where they settled permanently. She took a course to become a bilingual secretary at Clarendon College and worked for estate agents and then Courtaulds at Hayden Road. David became a Scientific Officer at the British Geological Survey in Keyworth.

Rhian and David had two sons, Thomas and Jonathan. Rhian adapted a tricycle and used it to

to
She

also
was
She
avid
In

She

fate
of



ferry the boys around. Rhian continued play hockey and joined Redhill Ladies. trained as a hockey umpire. She was involved with various local groups, including the annual Kimberley Pram Race and Mother and Toddlers. She took a course in Art and Design. She a keen walker, cyclist and birdwatcher. competed in triathlons. She was an reader, especially of science fiction.

later years, she helped to care for Mary, who had returned to live in Bleasby following the death of Frank. was very supportive of school friend, Jackie, following her cancer diagnosis. Therefore it seemed a cruel twist of when she also contracted a lethal form cancer. Major surgery at Queen's Medical Centre gave her an extra lease

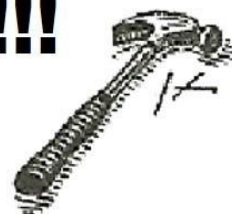
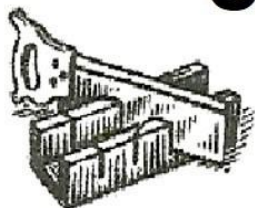
of life, during which time she saw Tom, a chemistry graduate, settle in a stable relationship with

Beth, and Jonathan graduate from Manchester University with a First Class

Honours degree in Physics. She was cared for by her husband, family and friends and by wonderful nurses from the Kimberley District

Hospice and MacMillan teams. She was well loved by family and friends and was loyal and devoted to them in turn and to her chosen causes and charities. She is sorely missed. As Mary would have said 'Good effort, Rhian'.

HANDYMAN CHRIS CAN DO IT OR FIX IT!!!



**KITCHEN & BATHROOM FITTING
LOFT CONVERSIONS**

WINDOW & DOOR FITTING

LAMINATE & WOOD FLOORING

WALL & FLOOR TILING

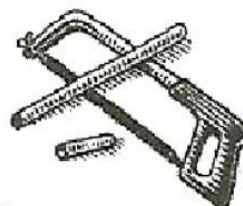
PLUMBING

ELECTRICAL

PAINTING & DECORATING

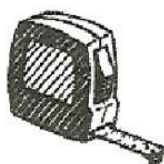
PROPERTY MAINTENANCE

FLAT PACK ASSEMBLY & FITTING



COMPETITIVE PRICES

FAST & PROFESSIONAL SERVICE



Telephone: 07877 240 760

Email: handychris.services@gmail.com

Bleasby Women's Institute

Another interesting, action packed and entertaining month or two for Bleasby Women's Institute members. Three of our members, Monica Richardson, Christine Sharpe and Bernice McGrath, were very fortunate in being amongst the many WI members from across the country to attend a Royal Garden Party at Buckingham Palace held to mark the centenary of the WI. The following day, 4th June, was the WI's Centenary AGM at the Albert Hall – a very special occasion which our member Christine Sharpe attended. It was broadcast in real time so many of us were able to see what was going on and listen to the eminent speakers, Lucy Worsley, Chief Curator of Historic Royal Palaces and well-known broadcaster; Helena Morrissey, Chief Executive Officer of a major investment company; and Baroness Tanni Grey-Thompson, gold medal winning Paralympic athlete. The Queen, the Princess Royal and the Countess of Wessex were in attendance with the Queen also addressing the members, congratulating the WI on a hundred years of exemplary service. The visit to Rutland Water in early June turned out to be something of a rescue mission as another visitor to the nature reserve was taken ill and our WI stepped in to help as much as they could. Hopefully the visit to Thrumpton Hall will not be so eventful.

The talk at our June meeting entitled "Storm the Castle" went down a storm! The speaker was Kathleen George and came in the persona, including dress and accent, of Mrs Thompson, the mother of Bendigo, the famous 19th century Nottingham pugilist. She took us through the tumultuous years of the Reform Bill, unrest and riot in Nottingham and the storming and burning of the Duke of Newcastle's Ducal Palace at Nottingham Castle. A splendid evening with many of the members dressing as Nottingham Lambs (a band of politically motivated rioters were so called) and Victorian ladies. One of our members, Melanie Mundell, was sporting tattooed arms and a splendid moustache – we were a little worried that they were permanent features, but not so thankfully.

We usually have a barbecue for our summer meeting but this year the fish and chip van is to call at Gibsmere instead. Pass the vinegar please!



Barbara Cast



THH.FITNESS



MOBILE PERSONAL TRAINER

THOMAS HUTCHINSON

thhfitness@gmail.com | 07581 273 035



@THHfitness



@thh.fitness



THH.Fitness

Too nervous or don't have the time to get to the gym? Then why not hire a personal trainer to come to the comfort of your own home. Bespoke package to tailor every individual:

-Weight loss/Toning

-Muscle building

-Strength

-Power

-Endurance

-Nutrition advice



D. J. Hall Funeral Directors

Southwell & District Funeral Service

Your local independent funeral directors offering a
personal and caring service

Verne House
62, King Street
Southwell

TEL: 01636 812481

EMAIL: sdehall2000@btconnect.com

WEB: www.djhallfuneraldirectors.co.uk

Bea Cleaning Services

We Leave the Competition In the Dust

- Regular Domestic Cleaning
- 1-Off Cleaning
- Move In/Out Cleaning
- Office Cleaning

Contact Bea

07826480783

0115 8402018

beacleaningservice@gmail.com

www.beacleaning.vpweb.co.uk

We are fully insured and
vetted

Trent Churches Choir

Following our summer break, rehearsals will recommence in September – every Thursday at 7.30pm in Bleasby Village Hall. We have singers from across the group of parishes and beyond – ie Farnsfield, Lowdham, Southwell and even West Bridgford! Anyone wishing to join us would be most welcome – please contact John King on 01636 831035.

On Sunday 11th October we are to sing Choral Evensong in the beautiful mediaeval church of Saint Mary, Tickhill, South Yorkshire. This will include music by Richard Shephard and John Rutter. Friends and supporters are most welcome – details from Choir members if you are interested.

The ever-popular Carol Concert (our 9th) will be at Rolleston Church on Sunday 13th December at 4pm. There will be a number of new carols as well as old favourites in this year's programme. The collection will be for the Lincs and Notts Air Ambulance. Full details of this and other choir activities for the remainder of the year will be itemised in the next issue of Bleasby News.

NJN JOINERY

Phone: Nigel Newcombe
on
01636 525506
or
Mobile: 07837 235427

**ALL TYPES OF JOINERY
AND
MAINTENANCE WORK
UNDERTAKEN**



Going away?
Why not leave your pets with us?

Valley Boarding Kennels & Cattery



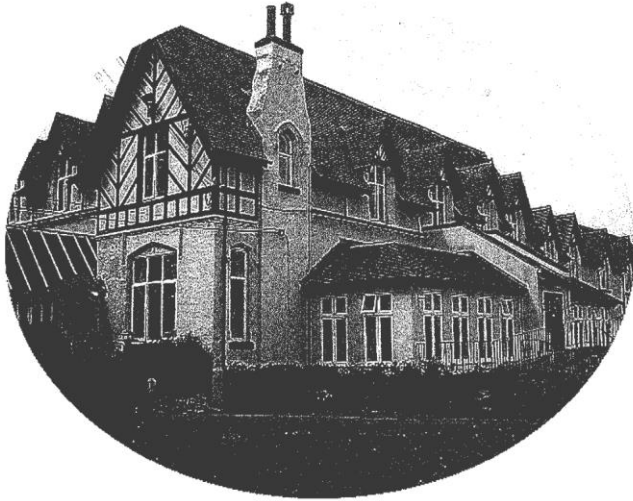
Situated between Bleasby and Fiskerton in the heart of the countryside

**** Kennels and catteries with outside individual runs ****

Please visit to see our facilities

Gypsy Lane, Fiskerton | Telephone: 01636 830268

www.valley.talktalk.net



Hazelford

The Provider of Quality Care

Our home is situated in a beautiful location with open views of the river and surrounding countryside. With lovely gardens and an abundance of wildlife, this makes Hazelford a delightful location for our residents, to some of whom we offer a short break; for others we become their home.

We pride ourselves in offering a home from home environment with an excellent ethos whereby our residents are involved in the decisions we take. We focus on our residents' aspirations, ideas, views and suggestions.

We have a person centred approach to the care of the residents: this approach is vital to ensure the best possible outcome and wellbeing.

Dementia care is a specialist area: we ensure with sensitivity that the resident is supported continually with person centred care planning, reinforcing daily the aspects of their lives they enjoy to ensure wellbeing and pleasures on a daily basis as, sadly, the previous day may be forgotten.

Our aim is to offer stimulating activities, with one to one time for those who may have dementia: we specialise in this area and our approaches create a relaxed harmonious environment for all.

Our bedrooms are large with views over the countryside and offer a choice of colour and furnishings, personalising them to suit our residents' preferences and choice.

Please feel able to visit our home at any time – a warm welcome awaits you. We encourage families to also have an input into the plans the home may make. We hold family and friends of the home evenings.

With spring and summer comes along a plan of social events: for the summer an annual garden party, summer fair and schedule of outings to various venues.

HAZELFORD

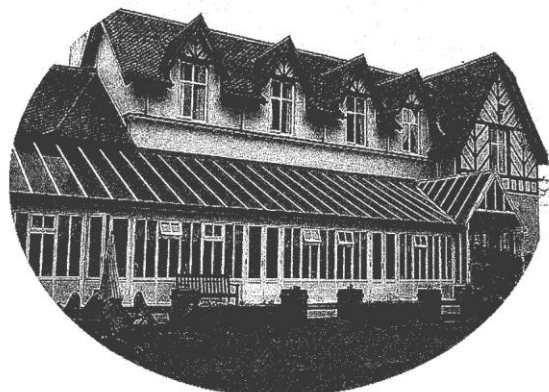
Boat Lane

Bleasby

Nottingham

NG14 7FT

Tel: 01636 830207



ROB BROWN LTD PLUMBING AND HEATING

MOBILE 07973890499

NOW BASED IN BILSTHORPE

email robinb9@gmail.com
more than 20 years experience

INSTALLATION SERVICE & REPAIRS
OF DOMESTIC GAS APPLIANCES &
HEATING & HOT WATER SYSTEMS

ALL PLUMBING WORK UNDERTAKEN
SMALL BUILDING WORKS
AND PROPERTY REPAIRS
ELECTRICAL REPAIRS

DO YOU RENT PROPERTY?
WE DO LANDLORD,S GAS CERTIFICATES
MAINS PRESSURE HOT WATER
Fully insured /no call out fee



Fading Memory?

Discover your local all-in-one photographic service and have your precious memories restored to their former glory

Image restoration - have creases, tears, scratches removed

Retouching - have your photograph enhanced by the removal of red eye, blemishes and marks, teeth whitened, eye colour changed and enhanced to showcase the real you

Montages - create a unique picture made from a selection of images of your children, grandchildren or a special event

Preserve those holiday movies and have your VHS, Hi8, Digital8, and miniDV tapes digitised and put on to DVD to watch again and again

Make some space under the bed and have your slides and negatives digitally copied to DVD to watch on your television

Digital photobooks created and printed,

Perfect for Christmas, birthdays, anniversaries or as a unique and personal gift

For a no obligation home appointment to discuss your requirements call

Andy Ball

www.FriesianFotographic.com

07931 535 131

info.friesianfoto@gmail.com

"Horstead", Station Road, Bleasby, Notts, NG14 7GH





Flood Defence Solutions in Nottinghamshire

Flood Defence Solutions Ltd can help protect your home, or business, from flooding!

Flood Defence Solutions Ltd can help protect your home and business from flooding. Offering a wide range of flood defence products from Water Wall Flood Barriers to Anti-Flood AirBricks to help reduce the risk of flooding to your home and business.

Systems, solutions and products to help prevent flooding include:

- Flood Barriers, Water Barriers, Flood Gates
- Anti-Flood AirBricks
- Water Repellent Concentrate
- Sewage Protection
- Back Water Valves
- U Bend Toilet Bungs
- Power Drain Cleaning Services

**NEED HELP OR ADVICE? CALL US ON
0115 966 3185 OR 07506 729 772**

Bleasby School Friends Association News



School is out for the summer and the BSFA would like to say a huge thank you to the parents, carers and staff at Bleasby School and to the wider Bleasby community for the amazing support you have shown us this last academic year. Since September 2014 we have purchased £500 worth of art supplies, 140 dictionaries, thesauruses and atlases, a projector and smart screen and a computer programming tool for KS2. We have been fundraising hard to improve IT facilities and recently school took receipt of 11 new laptops and a recharging trolley which are now being enjoyed by both Mrs Town and the children. This has only been possible through the many different ways in which you help us to fundraise and we are incredibly grateful for the contribution you have made ensuring Bleasby School Friends Association goes from strength to strength.

Thank you to everyone who made a donation to our Bag2School Scheme, every little bit helps and our recent Collection made a lovely £120. Our next Bag2School date is October 16th. It really is very easy to make a donation, just fill a plastic bag with your unwanted items (paired shoes, clothing, cuddly toys, jewellery, bags, scarves, ties, lingerie, hats and belts) and drop the bag off at the signed collection point on the grass verge at the top of the school lane on the morning of the 16th October.

Well done to everyone who shops online using Easyfundraising, this is a massive total and we are less than £2,500 away from our £10K goal by the next school year!

1st Bleasby School Friends Association £7,565.44

2nd Belmont Primary school £5,545.82

3rd Southfield Primary School £4,753.34

The Easyfundraising team will be visiting the school and speaking to the children and staff about the benefits of the money raised and profiling us on their new website! Please keep up the good work - big money earners are Holidays, Hotels and Home and Car Insurance; remember too when you are booking your train travel that Virgin and trainline.com also give back a percentage. Many thanks to Romo Designer Fabrics and Enterprise Rent-A-Car for their contributions, does your business do any online purchasing? There is also something called Easysearch, every search using this online search engine raises a 1p donation. So you see there are lots of ways to help support the school. If you have any questions regarding Easyfundraising, please contact Janene Scurfield who will be more than happy to help if she can Janene.Scurfield@erac.com

DIARY DATES

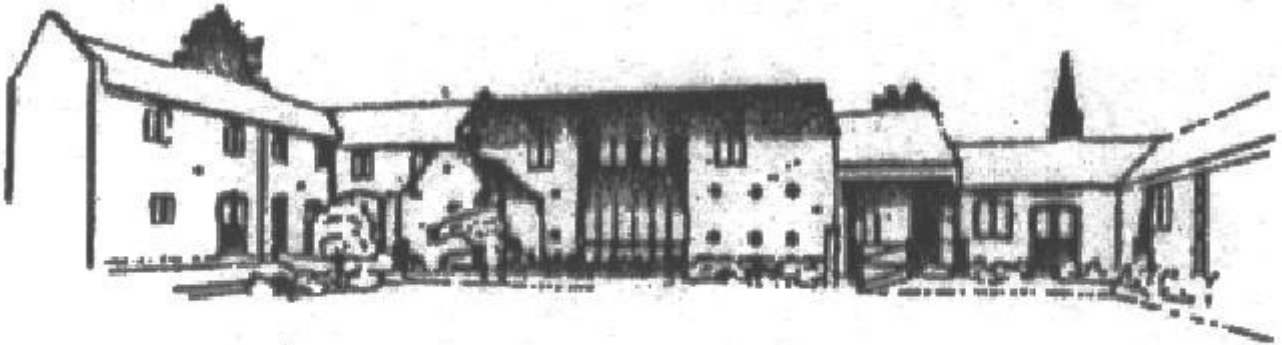
16th October & 30th January - Bag2school

23rd September - AGM & Macmillan coffee morning

If you would like to contact the BSFA please email Sam Bennington
Samb1000@hotmail.com

Wishing you all a safe and sunny summer!

Janene Scurfield (Chair), Sam Bennington (Secretary), Nic Bennett (Treasurer)



THE BYARS

A small, family owned and managed, independent Care
Home situated amidst the rural landscape of the Trent
Valley

The highest quality care in the highest quality
accommodation

Our home offers long and short term care for the elderly

Viewing welcomed. Further details on request

THE BYARS
· CAYTHORPE · NR. LOWDHAM ·
NOTTINGHAMSHIRE · NG14 7EB

Tel: 0115 9663981
REGISTERED NURSING HOME



HYDE BARKER
WORLDWIDE TRAVEL & ADVENTURE

**100% PURE
NEW ZEALAND
SPECIALIST**

NEW ZEALAND

- TAILOR-MADE ITINERARIES
- SMALL GROUPS JOURNEYS

01636 816 262 | www.hbtravel.co.uk

I KING STREET, SOUTHWELL NG25 0EH

ABTA
ABTA No. L8605

ABTA
ABTA No. L8605

The advertisement features a black and white photograph of a person standing on a rocky shore, looking out at a body of water with steam rising from it. An inset photograph shows a snowy mountain range reflected in a calm lake. The text is arranged in a clean, modern layout with a mix of bold and regular fonts.



The Tree Fellers of Bleasby

Tree Felling

Tree Pruning

Hedge Cutting

Tree Dismantling

Garden Services



We specialise in the safe and affordable removal and pruning of trees and shrubs.

Call for a free quotation from a qualified arborist.

Free Quotations contact Paul Wood

Phone: 07956 905287 or 01773 535 886

Email: info@thetreefellers.co.uk



ACADEME ROOFING

Quality Roofing Services



NOTTINGHAM'S NUMBER 1 ROOFING PROFESSIONAL

- Slating & Tiling
- Flat Roofs & pitched roofs
- Guttering, soffits and fascia
- Chimneys re-pointed
- Loft insulation, chimneys, Velux skylights
- Industrial roofs
- Specialists in all leadwork
- Single ply roofing systems
- Re-roofs & New roofing

OVER 25 YEARS EXPERIENCE

FREE ESTIMATES

An estimator can call within
24 hours of your enquiry

**CALL OUR OFFICE ON:
0115 950 6444**





ARTWORK BY ANNIE, 5



A BEAUTIFUL ARRAY OF PLANTS AT BLEASBY OPEN GARDENS

The Waggon & Horses

Gypsy Lane, Bleasby



Real ale! Real food!

Your local pub!

Colin on 830283