

BLEASBY NEWS



ST MARY'S IN THE SNOW IN 2009



DECEMBER 2017





Bleasby's Christmas Celebration

Saturday, 9th December
Starts at 6pm

Salvation Army
Brass Band

Carols

Star Decoration &
Instrument Making

At St Mary's Church &
Glebe Field, Bleasby

Refreshments at the
Waggon & Horses

Tealight & raffle
ticket for each child

Winning raffle ticket
turns on the lights !

Organised by Bleasby Parish Council & St Mary's Church

WELCOME TO THE WINTER/CHRISTMAS EDITION OF BLEASBY NEWS

The Christmas season seems to have arrived already, at least in the planning stage – so many events to look forward to, hopefully all of which are included somewhere in this edition. We especially hope to see many of you at the Carols and Lights Event on 9th December in St Mary's and on the Glebe Field – at the beautiful centre of our lovely, friendly parish!

In recent issues we have taken a look at Bleasby farms, the loss of many of our smaller farms and the changing face of farming generally. Reflecting on this and on the tribute to the late Peter Wilson on page 13, has emphasised the importance of community, the support we give to one another and the benefits we gain from being part of a relatively small community. What was most striking about the assembled congregation in St Mary's on November 21st was the support of the local farming community for the family. At least ten farming families from Bleasby and the surrounding villages were represented that morning. This community cohesion is something we should cherish. As small farms disappear will this sense of mutual support also disappear? Are we doing what we can to foster a sense of community? Evidence can be found within this edition that the signs are good. Village organisations are increasingly working together, there is an enthusiasm for a village events group and the parish plan steering group has produced a comprehensive response to the parish plan questionnaire. There is growing involvement with school and links with Hazelford Residential Home. All these initiatives deserve our support to ensure the flourishing of village life. As we have said above there are, in the run-up to Christmas, several events which offer the opportunity for people of all ages to get together and celebrate. Let's do it!

We always look forward to receiving your articles, photos, ideas, news etc so please send plenty for the February edition to:- Rachael Andrew, Sutton House, prandrew74@outlook.com or Barbara Cast, Little Dower House, barbaracast@btinternet.com by Monday 22nd January.

We wish all of you a very happy Christmas and a bright New Year.

Your Editors, Rachael and Barbara

PARISH COUNCIL NEWS

As Christmas approaches an optimism, and opportunity, rises for goodwill and community involvement throughout the parish. Already this has been admirably demonstrated by the WI, St Mary's Church and Village Hall inaugural 'Friendship Coffee Morning' which was held towards the end of November and which epitomised all that, as a community, we value and strive for. It chimed exactly with what was being voiced in the Parish Plan Questionnaire returns on what we value most and what we aspire to in our village. On this occasion the Village Hall again admirably

demonstrated its key role as a 'village hub' and meeting place which, along with its excellent facilities, management and appeal, was identified by parishioners in the PPQ by no less than a total of 113 returns.

The Parish Plan Steering Group's interim progress report, delivered with this Bleasby News, provides a valuable insight into the constant ongoing input of these local volunteer stalwarts who have been meeting every fortnight and working between times in distilling the information provided by the independent analysts for presentation and development by the various interest groups and, ultimately, to be brought to the village before being finally forged into a Parish Plan to guide Bleasby's progress over forthcoming years.

Many of you will be sorry to hear that Andrew Goodwin has resigned from the Parish Council as a result of changing circumstances. Andrew has been a member of the Parish Council for six and a half years, having been elected in 2011 and then re-elected in 2015. He will continue to provide service to the community through the Manor Farm Teashop and his farming interests. As a result of Andrew's departure and the fact that no request has been formally made by electors of the parish for an election to be held, the Parish Council is now seeking applications from parishioners to take his place on the Council. This is the perfect opportunity for any elector to come forward to join an enthusiastic band who are excited and energised by the prospect of moving the parish forward positively guided by our emerging Parish Plan and driven by a desire to enhance the strong sense of community and achieve the best for our village and all its inhabitants. Please PAUSE here, REFLECT and CONSIDER this invitation – then speak, ring, write or email me or the Clerk for further details.

A key focus to effect change, engage and involve everyone is obviously by ensuring effective communication and the development of this is clearly at the top of our Steering Group's agenda with the Questionnaire providing very useful feedback. Traditional "word of mouth" is still a key means of finding out "what's going on" in Bleasby (81%) but Bleasby News (93%) and noticeboards (56%) are possibly more detailed and reliable. The more up-to-date media sources such as emails, websites etc are all variously used by roughly 25% of respondents and, significantly, somewhere around 40% would like to use such sources. The need for rationalising and improving our current systems has been flagged up in the feedback and the Parish Council is keen to improve its own website and is now awaiting results of investigations on doing this.

The Local History Society and St Mary's PCC, under the keen guidance of Ken Ogilvie, are making great strides towards a spring completion of the Aircrew Memorial which is to be sited next to the churchyard and church carpark in the far corner of the Glebe Field where it can be easily seen and accessed. All are working towards a commemorative event on 1st September 2018, the 75th anniversary of the mid-air collision of the two Lancasters with the loss of both crews. It is hoped that all our organisations will continue to support this great project and also that the whole village might in some way become involved in this venture which will mark the sacrifice of these young men who gave their lives for our future.

Another great opportunity for a village gathering will be our Carols and Lights in the Church and on the Glebe Field on December 9th at 6pm when the village Christmas tree will be lit and carols will be sung with support from the Salvation Army Band and children from Bleasby School. Please bring the whole family – there will be Christmas creativity opportunities for the children and young and old are invited to bring home-made Christmas decorations to put on the tree.

The new Parish Plan Events Group will be holding their first mini-event on Boxing Day at 2pm on the Glebe Field and you are invited to form tug o' war teams of 8 before or on the day. The Waggon will be open from 12 noon – a further opportunity for another great Christmas family occasion of fun and memory! Returning to ensuring better communications, please check the centre-pages of Bleasby News for the diary of events and also the Village Christmas Events section of the community website plus, of course, noticeboards for more details.

We hope that everyone will feel welcome to attend and take part (even if in a quiet and discreet way!) in all that Bleasby has to offer this season – sharing in such events is all part of the appeal of our village.

Finally we wish you all a very happy Christmas and a peaceful New Year.

Peter Cast on behalf of the Parish Council

FROM THE REVD PHIL

***"We hold this day holy, not like the pagans because of the birth of the sun, but because of him who made it."
Unknown AD 320***

Dear All, last year in December I wrote about Leonard Cohen, now remembered in the shape of Leonard the Golden Retriever of course. But some said that I should write about Christmas in December, perhaps because of 'tradition'? And who else should write about it, than the Vicar! Another tradition?

Tradition is a strange mixed up thing isn't it? My children came back from university and continued to hang stockings up on Christmas Eve! It became a tradition. In one church I was in, I was told that where and when flowers were placed could not be changed! It had become a tradition through familiar repetition. What 'traditions' do you have and why? Do they bring a sense of the familiar, the safe and secure? Why is that so important? Christmas traditions are myriad. Celebrating Christ's birth only became a regular thing after some centuries, and on a variety of dates. Turkey, trees, decorations, fruit pudding, mistletoe, 25th December, 12 days of... the list of traditional things and practices is a long list! Some have Christian origins, some don't. We appeal to the argument of 'tradition' whenever we feel threatened, as if the repetition of a practice is the important thing. So it was said to me once "We have to have brandy butter with Christmas pudding, it's a tradition!". Whether it's good for you (me as a

diabetic) apparently is not a consideration!! You could think of better examples perhaps?

Surely tradition is not enough, not a reason for doing something. It is only useful if the thing you are remembering is important and significant for living today. Celebrating the entry into this world of the Creator as a human baby is the meaning behind many traditions. That the reason for a tradition is faith in Christ as a bringer of forgiveness and an encourager of reconciliation does make sense. Coming to a carol service may be a tradition for many, but it conveys a truth for all. It's the truth conveyed that makes all the difference. I encourage you to do that, obviously! Or make a Christian Christmas tradition of your own, perhaps it could involve renewing your faith, doing acts of kindness not looked for, promoting a good cause in a new way??

Finally, 'traditionally' Christian faith has actually undone old traditions, in Acts (17:6) the pagans of Thessalonica, when dragging the Christians to the City elders, declared *'these who have turned the world upside down have come here too'*. Oh dear! By starting a new tradition you may need to overturn an old one?

Seasonal Blessings, Phil

***In the birth of Jesus,
'God has put down the mighty from their seats and exalted the lowly.
He has filled the hungry with good things and sent the rich away empty.'***

phil_07@btinternet.com - www.westtrentchurches.co.uk – 07720010066

The Revd Phil can be contacted as above or via the administrator for the West Trent Group: Paula Carlin on 07419 176021 or at beneficeofwesttrent@gmail.com

CHURCH NEWS

Coffee Morning

We were pleased to join with the WI and Village Hall Management Committee for a coffee morning to mark World Kindness Day. Nationally the WI has been debating and highlighting the problem of loneliness at its annual conference and through the media. Our community is fortunate to have regular activities of various kinds and for all ages but still there are people who don't get out much for one reason or another and miss human contact and conversation. It is hoped that coffee mornings, which are not designed as fundraisers but simply as an occasion to get together, will become a regular occurrence. The next is planned for January 26th. If you would like to come or know anyone who you think might appreciate going to such an event, please contact us.

Harvest

School and Church working together chose the Rohingya Refugee Crisis as their Harvest Project. Collections were taken after the school service and at the Sunday Harvest Festival and £300 was sent to the joint charities emergency relief fund.

School Visits

Years 4 and 5 visited St Mary's on October 6th to learn about the building, its layout, history and contents. After the session inside, the weather was good enough to allow the children to explore the graveyard and to talk about some of the information on headstones of older and more recent graves. On Dec 1st Years 5 and 6 visited for an Advent Experience to learn about the meaning of Advent and to make Advent Rings for use in Church and in School worship.

Village Christmas Event

The lighting of the Christmas tree on the Glebe Field last year was threatened to be a wash-out due to heavy rain. A quick move to the church saved the day, with the Salvation Army leading the singing of carols. This year we will be better prepared, the decision having been made to arrange for the carol-singing part of the event to be in the church, rain or not. Please see page 2, posters and websites for further details.

Crib Service

The crib service will be held as usual on Christmas Eve at 4pm. If you would like to take part in bringing the Christmas story to life, please be in touch. Words and costumes are provided, no rehearsals are needed and a change of "actors" is always refreshing. We are pleased to have volunteers from school to read and Mrs Town and Mrs Carpenter to put them through their paces. It would be good to have some older "youngsters" taking part too.

Lent

It is very early to be thinking about Lent but as our next edition of Bleasby News won't appear until February, Lent will be almost with us. We intend to again hold weekly Saturday Lunches which have become a tradition and which raise useful amounts of money for various charities. If you would be interested in hosting a soup and cheese lunch for a charity of your choice please let us know.

Diana Temperley and Rachael Andrew, Churchwardens

SMOKE GETS IN YOUR EYES

Just a note to ask that you check Newark & Sherwood Council's website guidance concerning the legal and reasonable burning of bonfires – under certain conditions bonfires may be contravening the Environmental Protection Act 1990. The smoke can cause problems for some people so please think of neighbours before setting light.

Going away?

Why not leave your pets with us?

Valley Boarding Kennels & Cattery



Situated between Bleasby and Fiskerton in the heart of the countryside

**** Kennels and catteries with outside individual runs ****

Please visit to see our facilities

Gypsy Lane, Fiskerton | Telephone: 01636 830268

www.valley.talktalk.net

PICNIC PERFECT – REMEMBER AUGUST!

“Do you want me to put up the bunting?” the ever-kind Peter Cast offered. It was the cherry on the cake, perfectly summing up the atmosphere of the 2017 Bleasby Summer Picnic.

As people from our village community and beyond made their way on to the Glebe Field, there was a buzz of excitement and a warm and friendly mood in the air. Greetings started with a mixture of initial polite awkwardness but soon gave way to a willingness to happily chat with strangers - giving the picnic the vibe of a quintessential English summer’s day. One group announced they had travelled all the way from Newcastle. In my nervous apprehensive state (having previously worried my family might be the only attendees) I gasped “really?”. They then explained they were visiting relatives in the village. Of course, but still lovely to have people from so far afield!

Soon there were enough blankets down on the ground for it to be well and truly classed as a village picnic. People began to mill about from group to group, sitting on each other’s chairs and offering food and drinks. Children of all ages were running around and chatting away without a care in the world. As I bit into my scone with jam

and clotted cream I thought 'this is totally lovely'. And I wasn't just thinking about the scone.

After marking out a rounders pitch, teams were enthusiastically formed (by the children) and adults were persuaded/forced to join in too. The church windows were safe as with a poor quality, split tennis ball, the number of 'big hits' and actual scoring of rounders were not a huge threat to the stained glass. Everyone played with gusto and there was even talk of looking into the possibility of joining a Nottinghamshire league - I'm not sure how many glasses of Prosecco had been consumed by that point though.

As the afternoon drifted into evening, news came of Federer's victory at Wimbledon, nice work Roger. People had made new friends, extended the evening with a wander for a drink at the pub and generally seemed to have had a great time. And just as we thought it was time for a last litter pick before home, a large group - who'd come to celebrate a birthday - gave the village picnic a second wind. The evening sun was warm and, as the cake candles were lit and 'happy birthday' cheerily sung, it was indeed the perfect end to a perfect picnic.

See you next year...

Angela Dunning

RNLI COFFEE MORNING

Thank you to everyone who supported the Coffee Morning last month. I am delighted to tell you that we raised £466 and that our souvenir secretary had sales of £322. Your generosity will help to ensure that Lifeboats have fuel and are ready when the call comes. RNLI lifeboats are on call 24 hours a day, ready to respond to any emergency at sea. Of the ten launches today there have been three on the East coast – at Sunderland, Bridlington and Cleethorpes.

Ann Buckley

APOLOGY

We apologise for the distress caused to Peggy Pearson for the error made in the October edition of the Bleasby News. The entry should have read —

The funeral of Cyril Pearson took place at St Mary's on July 27th. Cyril worked in insurance and came to Bleasby when his job moved from the Lincoln to the Nottingham office. The service was attended by many of their neighbours from Manor Close to whom Peggy expressed her gratitude for their support during Cyril's long illness at home and in hospital and after his death.

LAKE DISTRICT HOLIDAY COTTAGE

Borrowdale Road, Keswick

3 Bedrooms | Sleeps 6

TO LET

Fully refurbished holiday cottage with gas central heating,
open fire place and private parking

Views overlooking the fells, front and rear gardens,
superb location

For further details please ring

01636 830209 | 07812 101303

**A. Rickett & Son,
Bleasby
Builder & Contractor
Tel: 01636 830468**

BLEASBY PLAY GROUP

On Monday 18th December we will be hosting our annual Christmas Party. Santa and his Elves will be paying us a visit, and we will be serving party food and mince pies - plus lots of treats for the grown-ups!

All are welcome to join in the festive fun - so please do come along from 9am onwards on Monday 18th December.

Bleasby Play Group is a friendly and supportive group for babies, toddlers, pre-schoolers and their carers. We are open every Monday morning (term-time) from 9am until 11am in Bleasby Village Hall. We'd like to say a huge thank you to everyone who supports and helps us. We couldn't do it without you! If you'd like to help us in any way, then please do get in touch

Thank you and we look forward to seeing you!

Bleasby Play Group - 07788 738463 - 07717 712833





Some of the Bleasby Railway Station signs in Philip Soar's collection

NJN JOINERY

Phone: Nigel Newcombe
on
01636 525506
or
Mobile: 07837 235427

**ALL TYPES OF JOINERY
AND
MAINTENANCE WORK
UNDERTAKEN**



CAROLS ROUND THE PIANO!

There will be an informal gathering to sing Christmas Carols in the pub - our lovely Waggon and Horses - on Sunday, December 17th, from 7.15pm. Louise is playing the piano - word sheets provided. There is a rumour of turkey rolls too..... All welcome. No need to book - just come and join your friends and neighbours in our run up to Christmas.

Further details from Ali Sutherland, 831026

PETER WILSON

The funeral of Peter Wilson took place at St Mary's on 21st November. Although Peter had lived in Morton since the late fifties his previous family home for the ten years before he moved to the farm at Morton was Brickyard Farm in Bleasby. He attended Bleasby School and was confirmed in Bleasby Church. For Peter then it was a sort of coming home.

Peter was a big-hearted man with a down to earth philosophy, a farmer to his core, steeped in the language of the countryside and always carrying a piece of string, a pocket knife and wearing a flat cap. The cap could be used for many things, from cleaning tractor cab widows to protecting the hand when dealing with barbed wire! Modest about his achievements, he made sure that all he knew about farming was passed on to his family, above all the importance of doing every job thoroughly. He was a committed family man who took a quiet pride in his children and grandchildren. Although he was content to stay close to his roots and was not much taken with travel, he visited Australia late in his life to visit grandchildren. Their memories of Peter evoke happy times spent on the farm and the warmth and affection shown to them by Peter and Val, not to mention an endless supply of liquorice allsorts!

The farming community, including the Bleasby Shoot, came together to mark the passing of their friend and colleague and, together with his extended family and neighbours, they filled the church to capacity.

(Taken from the tributes given by family members).

(Peter is one of the pupils on the school photo on page 14)

BOB ADAMS

Bob's funeral took place on 28th November at Gedling Crematorium. We hope to include more about Bob and his life in our next edition. In the meantime our thoughts are with Irene and his family.

BLEASBY SCHOOL CHILDREN IN 1949 – WHO DID YOU RECOGNISE?



This photograph, taken in 1949, is of the pupils of Bleasby School in what is now the garden of Hollybeck. Most of them are known by Sylvia Kershaw (then Bull), who was at school at that time, and their names, as remembered by Sylvia, are set out below. Is she completely right? can you say who the unidentified boy on the front row is? or confirm that it is Brian Mendham on the back row (where the photo is torn)? or remember PC Stephens' son's Christian name?

Back row Jacqueline Stokes, *possibly* Brian Mendham, Celia Thurlby, John Gill, John Williams, Norman Douglas, Bruce Toplis, Brian Stokes and Gordon Voce. **Third row** Sheila Mendham, Peter Wilson, John Sawyer, Janet Walker, John Hall, Peter Woodward, Jean Voce, Ruth Warrener, Robert Richardson. **Second row** Hugh Watson, Linda Murley, Patricia Moulds, Margaret Healey, Sylvia Bull, Mary Scrivener, June Williams, Alan Voce. **Front row** Christopher Gill, Joan Healey, Dennis Bull, *boy not identified*, Audrey Hall, young Stephens, Christine Moulds, David Marson, Elizabeth Watson, Christopher Foster.

The teachers were, on the right, Miss or Mrs Cresswell and, on the left, Mrs White.

The Stokes family lived at the Lodge to Bleasby Hall, the Gills were at North Farm, the Wilsons at Brickyard Farm, the Richardsons at Gibsmere Farm, the Walkers at Little Glebe Farm, the Woodwards at Glebe Farm, the Murleys at Brookside Cottage, the Scriveners at Hazel View, the Stephens at the Police House, the Watsons at Crooked Chimneys, the Healeys and Mendhams next to each other on Station Road.

Thank you Sylvia for this fascinating photo!

BLEASBY WOMEN'S INSTITUTE NEWS

This year we have enjoyed a number of really interesting and inspiring talks including in September when we learnt about the trials, tribulations and joys of writing for children from a brilliant and inspirational speaker, the children's author, Elizabeth Baguley of Lowdham.

In October, we celebrated our WI's birthday with a dinner at Oakmere – we were formed on 19th October 1922, so we are 95 years old!

On 17th November, to coincide with World Loneliness Day, we held a most successful Friendship Coffee Morning which attracted at least sixty people during the event. It was a very happy and busy morning to which we were very pleased to be able to welcome friends new and old, including some who had left the village – Ailsa Hutchinson and Margaret Stretch among them. We hope to continue to hold these events from time to time and the next one is planned for Friday 26th January - we are pleased to be joined in this venture by St Mary's and the Village Hall Management Committee.

At our November meeting, the subject of Jill Dyer's talk was "The Tyranny of Beauty". Jill took us through the history of the changing face of fashion, how women have tried to control body size and shape, enhance their appearance, experiment with hair styles and body adornment, often at the expense of health and well-being. This was a cautionary tale – though the topic of shoes and the harm that fashion shoes can do to the feet came too late for most of us! We welcomed several guests to this meeting and hope that they will have been encouraged to join us as members.

There is a busy programme in the run-up to Christmas including carol singing round the village on Tuesday 19th December. If you would like to join us, please meet us at Little Dower House (opposite the Tea Shoppe) at 6.30pm. We are always pleased to have reinforcements for this annual event—all are welcome. Money raised will go to The Children's Bereavement Centre in Newark.

Looking forward to the New Year, in January we will be hearing about the history of the Burgage from Ellis Morgan and in February it will be on the work of the ACWW from Helen Crowder. We welcome all to our meetings which we hope everyone finds them friendly, interesting and, often, amusing!

Meetings are held at 7.30 on third Tuesdays in the Village Hall.

Rachael Andrew and Barbara Cast

MARK GOODMAN, BLEASBY ARTIST

One of the hidden treasures of Bleasby has just come to light! By chance we happened upon news of an exhibition of paintings by a Bleasby artist, Mark Goodman, who happens to be our next-door neighbour. We visited the exhibition at the Spotlight Gallery in Newark Town Hall and were amazed by the wonderful watercolours Mark had displayed there. We needed to find out more about our neighbour's artistry and we felt that others would be most interested to find out more too.

Mark, who has a BA Hons degree in 3D design from De Montfort University, has given us a potted history of his career in art -

"I have always drawn but I have only taken up watercolour painting in recent years. Local scenes and views of Newark are favourites for my pictures, as are seaside views. I have been the Secretary at the Newark Art Club for the last four years and help arrange demonstrations and workshops, in order to create a full and varied programme for each year. I like to go out sketching with Art Club Members, weather permitting and, because my pictures usually contain quite a bit of detail, after sketching en plein air, I take photos as 'back up' information, and work on them in the studio. I have exhibited at Patchings "Leisure Painter Open Art Exhibition" since 2014 and this year I was asked if I would like to exhibit at the Spotlight Gallery in Newark Town Hall Museum during October and November. This was my first solo exhibition and it meant that I had to get together at least fifteen original paintings to display. I was very encouraged to get good feedback from the Spotlight Gallery stewards of the interest shown in my paintings, as it can be very insular working as an artist! Should you want to see more of my pictures, you will find them on www.markgoodmanart.co.uk "

Although the true skill and beauty of the painting is not shown at its best in miniature, we have included two of Mark's paintings in this edition on page 39. Maybe a local exhibition is called for!

P and B Cast

EXPLORING BUDDHISM OF THE HIMALAYA

On 28 January 2018 there will be a talk on Buddhism as practised in Tibet and the Himalayan regions of India, Bhutan and Nepal, followed by an hour of yoga and meditation. Open to all, the event will run from 10.00 to 13.00 in Rolleston Village Hall, and all net proceeds will go to the Tibet Relief Fund. The event is being hosted by Bleasby-based author Colin Stump and well-known local yoga teacher Mandy Keast-Southall. The talk will explain the fundamental principles of Buddhism, explore the evolution of tantric ritual, and the complex art and iconography of the traditions. Modern-day practice in India, Bhutan and Nepal will be covered, with an update on Tibet under Chinese rule. The talk will be illustrated with many images from the Himalaya and Tibet. Following questions and answers, there will be a short break for tea and coffee. An hour of yoga and meditation, open to all, will conclude the morning.

Colin lives in Bleasby and has travelled extensively in the Himalaya. He has recently published a 640-page book 'Wisdom of the Mountains,' a comprehensive guide to the evolution, practise and traditions of Tibetan Buddhism. Mandy is a popular and long-established local yoga teacher, taking classes and workshops, as well as specialising in one-to-one Yoga Therapy. Travelling to India and taking groups for ashram retreat, has deepened her understanding and practice of yoga and meditation.

The Tibet Relief Fund was founded in 1959 to help Tibetan communities in need. Today they continue to work with Tibetans in India, Nepal and Tibet through local projects that address basic needs and provide vital healthcare and education. They also respond to emergencies and promote self-sufficiency in Tibetan communities to help them build a positive future - www.tibetrelieffund.co.uk.



Tickets are £10, and can be obtained from Colin (07980 211531), Mandy (01636 830218) or online

at www.himalayanbuddhism.com/contact

SOUTHWELL TRAVEL SHOW 2018

Saturday January 20th

Saracens Head Hotel 10am - 3pm

Exclusive show offers - Expert advice

Presentations - Holiday raffle

Tel: 01636 816 262

Hosted by Hyde Barker Travel

THE TRAVELLERS



TRAVEL AGENCY

Exchange this advert for a £50 holiday voucher at the show or at
www.hbtravel.co.uk

CONGRATULATIONS TO BLEASBY SCHOOL – AGAIN!

The Bleasby Tag Rugby Team are the Nottinghamshire County Champions – well done to the team and their coach and transporter Robin Scurfield.

The school's Garden 'n Grow Club received a silver gilt from East Midlands in Bloom only eight months after it was set up. It also achieved top status from the Royal Horticultural Society's School Gardening Awards. Well done the children and the supporting team of parents.

MOBILE LIBRARY VISITS IN 2018

Dates to catch the mobile library for the remaining month of 2017 is **December 7th** and the first month of 2018 is **January 5th**. The mobile library stops at:-

Bleasby Station at 11am until 11.15am

Orchard Close at 11.20am until 11.40

Elmore's Meadow at 11.45am until 12 noon

Crabtree Close at Gibsmere at 12.05pm until 12.20pm

Hazelford Residential Home at 12.25pm until 12.40pm



WATERMILL COTTAGE
LUXURY SELF CATERING ACCOMMODATION

 SLEEPS 8  SPACIOUS GARDEN  OPEN PLAN LIVING

Watermill Cottage Anglesey LL65 3PH



ENQUIRIES: Alison Collins
 07788738436

 alisoncreative@icloud.com
 WatermillCottage

Bleasby School's Christmas Fair

Choir
at 1pm

FOOD STALLS AND LOCAL CRAFTS

Visit Santa in his Grotto

- DVD Room, Class Stalls, Craft Room
- Refreshments, Mulled Wine & Mince Pies
- Raffle, Chocolate Tombola and so much more!

Sunday 10th December

1 - 3pm

Free Entry



Bleasby Diary of Events

Date	Time	Event	Location
Saturday 2 nd December	9.30am	Jubilee Ponds Working Party	JPs
Saturday 2 nd December	10am - noon	Bleasby WI Coffee Morning	Village Hall
Saturday 2 nd to Sunday 3 rd December	6.30pm until 1.30pm	Level crossing closed	Railway
Advent Sunday 3 rd December	10.30am	Morning Praise for Everyone	St Mary's
Advent Sunday 3 rd December	3.30pm	Thurgarton's Christingle Service	St Peter's Thurgarton
Saturday 9 th December	6pm	Christmas celebrations on the Glebe Field and in Church with the Salvation Army Band & the lighting of the Christmas Tree	St Mary's and the Glebe Field
Sunday 10 th December	10.30am	Joint Service of Holy Communion	St Peter's Thurgarton
Sunday 10 th December	1pm - 3pm	Bleasby School's Christmas Fair	Bleasby School
Sunday 10 th December	6pm	Halloughton's Carol Service	St James' Halloughton
Monday 11 th December	7.30pm	Meeting of Bleasby Parish Council	Village Hall
Tuesday 12 th December	7.30pm	Bleasby WI's Christmas Party	Village Hall
Saturday 16 th December	7.30pm	Carols for Everyone	Southwell Minster
Sunday 17 th December	9.30am	Jubilee Ponds Working Party	JPs
Sunday 17 th December	10.30am	Benefice Service of Holy Communion	Holy Trinity Rolleston
Sunday 17 th December	7.15pm onwards	Christmas Carols in the pub	Waggon and Horses
Tuesday 19 th December	6.30pm onwards	The WI goes carol-singing - other voices welcome	Meet at Little Dower House
Sunday 24 th December	4pm	The Crib Service	St Mary's

Monday 25 th and Tuesday 26 th December		Christmas Day and Boxing Day	
Tuesday 26 th December	2pm	Boxing Day Tug o' War	Glebe Field
Wednesday 27 th December		School holidays officially start!	
Sunday 31 st December	10.30am	Benefice Service of Holy Communion on New Year's Eve	St Mary's
Saturday 6 th January	9.30am	Jubilee Ponds Working Party	JPs
Sunday 7 th January	10.30am	Morning Praise for Everyone	St Mary's
Monday 8 th January		School resumes	
Monday 8 th January	7.30pm	Meeting of Bleasby Parish Council	Village Hall
Sunday 14 th January	10.30am	Service of Holy Communion	St Mary's
Tuesday 16 th January	7.30pm	Meeting of Bleasby WI with Ellis Morgan on The History of the Burgage	Village Hall
Sunday 21 st January	9.30am	Jubilee Ponds Working Party	JPs
Sunday 21 st January	10.30am	Benefice Service of Holy Communion	Holy Trinity Rolleston
Monday 22 nd January		Deadline for February's Bleasby News	
Friday 26 th January	10am	Friendship Coffee Morning	Village Hall
Saturday 27 th January	7pm	Bleasby Local History Society Annual Supper	Village Hall
Saturday 3 rd February	9.30am	Jubilee Ponds Working Party	JPs

WELCOME

We are pleased to welcome Kim and Chris Curzon who have moved into Goverton Cottage and Terri and Mike Swift who have moved into The Croft on Gypsy Lane. We hope that they will be happy in their new surroundings and look forward to meeting them at community events.



Join us for our Advent Services as we
Celebrate the Birth of Jesus
at **St Mary's Church, Bleasby**

Sunday 3rd December 10.30am
Morning Praise for Everyone

Sunday 10th December 10.30am
Joint Holy Communion Service at Thurgarton

Sunday 24th December 4.00pm Crib Service
Christmas Day – no service here – please see other
notice for alternatives

Sunday 31st December 10.30am
Benefice Service with Holy Communion

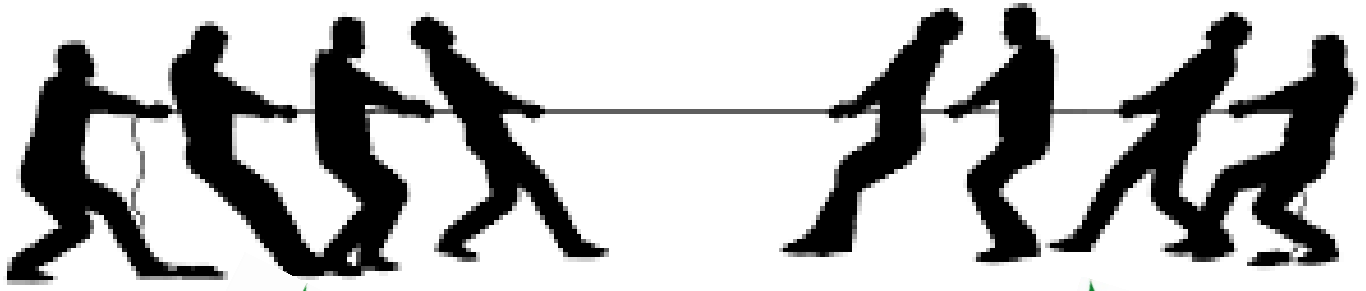
December Church Services in the West Trent Benefice

December	Bleasby	Halloughton	Hoveringham	Morton	Rolleston	Thurgarton	Upton
Advent Sunday 3 rd	10.30am MPE		6pm EP	9am HC	10.30am MPE	10.30am Christingle	10.30am HC
Sunday 10 th		6pm Carol Service	10.30am MPE	10.30am MPE	11am HC	10.30am <u>Joint</u> HC	10.30am MPE
Tuesday 12 th							10am HC
Sunday 17 th				6pm Carol Service	10.30am Benefice HC		4pm Carol Service
Thursday 21 st			7pm Carol Service				4pm Zip Bam Boo
Christmas Eve Sunday 24 th	4pm Crib Service		4pm Service	10.30am HC	6pm Carol Service	6pm Carol Service	10.30am MPE
Christmas Day 25 th			10.30am HC	10.30am HC	9.30am MPE		9am HC
Sunday 31 st	10.30am Benefice HC						

January Church Services in the West Trent Benefice

January	Bleasby	Halloughton	Hoveringham	Morton	Rolleston	Thurgarton	Upton
Sunday 7 th	10.30am MPE		6pm EP	10.30am Plough Service	10.30am MPE	10.30am MPE	10.30am HC
Tuesday 9 th							10am HC
Sunday 14 th	10.30am HC	6pm EP	9am HC	10.30am MPE	10.30am MPE	10.30am HC	10.30am MPE
Thursday 19 th							4pm Zip Bam Boo
Sunday 21 st					10.30am Benefice HC		
Sunday 28 th		9am HC	10.30am MPE	10.30am HC	10.30am HC	10.30am with Methodists	10.30am MPE

HC = Holy Communion MPE = Morning Praise for Everyone EP = Evening Prayer



BOXING DAY



TUG OF WAR

2PM

GLEBE FIELD

LADIES, GENTS & CHILDREN'S PULLS

TEAMS OF 8

TURN UP AND JOIN IN ON THE DAY

APPROPRIATE FOOTWEAR ESSENTIAL

WAGGON OPEN BETWEEN 12 AND 4PM

ORGANISED BY BLEASBY PARISH COUNCIL

ANY QUERIES PLEASE CONTACT

CHARLOTTE GENT 07947 571280

CHANGING SCENERY ON THE JUBILEE PONDS – APPROACHING THE YEAR’S LAST ACT

As in a theatre, a progressive change of repertoire is played out seasonally on the Ponds. Characters come and go, scenery changes and a myriad of changing light and sound effects continue to demand the attention of the eye and ear of any visitor to the Jubilee Ponds.

Our autumn season is closing and our winter season is about to begin. The wildlife actors of the summer production are long since gone, including, surprisingly, our regular gadwall flock of stage shifters. Autumn stars of the show are bowing out whilst the winter cast is about to commence its first act.

Fieldfares are now on stage cackling their introductory lines, whilst the redwings whistle plaintively in secret off stage. The massed flights of black-headed gulls have lost their summer costumes and hurry around causing general mayhem in the theatre, whilst, off stage, hundreds of them congregate on the adjacent ploughland, overwhelming the rather shy but elegantly attired lapwings waiting in the wings. The great crested grebes, our summer ballerinas, have lost their grandly feathered head-dresses and, in dulled attire, skulk around the aging scenery shorn of their former finery, out of the limelight.

Nature has been attending to the scenery, revealing the trees now skeletal frames with just the choice subjects to keep for the next act – the reliable maples in their yellow autumn capes, the slender birches ready to scatter their yellow confetti leaves as a carpet on the stage floor and the now khaki-clad oaks standing bravely for the Great War Centenary performance.

Props are arranged on hedgerows and scrub – ruby-red necklaces of bryony berries festoon the bushes, red-eyed rosehips stand brightly out of the drab undergrowth, and dark green crowds of gorse are bedecked with the yellow symbols of everlasting love. The lights now shine bright as the sun’s rays pierce last summer’s shaded entrances and shadowy tunnels whilst the footlights glow at the stage’s water edge with a trembling and flickering of wind-rustled wavelets.

The woodpigeons clatter noisily as they emerge from their tangled roosts like crowds tipping up iron-framed theatre seats to better glimpse the opening performance of gently rocking tufted duck and coot flotilla on gust-riven waters. The scene is set for “Winter Cometh” and there is much yet to entertain. Some of the characters in this production are, of course, human – some cast as heroes, others as villains, whilst many hold critical roles in the supporting company.

All this is very fanciful but, in the real-life human story of the Ponds, many “players” have come and gone, making some small – and sometimes large – contributions to the unfolding development of the area. To a similar end your own views need to be offered and heard and considered as part of this ongoing process. Currently parishioners’ views set out in the Parish Plan Questionnaire and the JP Management

Group's survey have been a focus for discussions between the Parish Council, the Jubilee Ponds committee and the anglers. As a result, a clearly defined desire has emerged to try to meet the various rights, needs and aspirations of a whole range of interest groups. Endeavouring to make every one of those users feel welcome, comfortable, safe and well enough informed to be able to enjoy the Ponds to their full whilst respecting the activities and pleasure of others, has become a key focus. By acting with understanding and consideration, conflict of interest can be minimised. Inevitably compromise and cooperation will be key requirements to ensure that the Ponds can be enjoyed by people of all ages and all interests.

Let's make our combined performance a variety show success with a cast of hundreds!

Peter Cast

BLEASBY LOCAL HISTORY SOCIETY

Our October talk on the history of trade and transport on the Trent was most interesting and the speaker, Philip Riden, was most knowledgeable about the waterway links throughout the country and explained how they all linked in to enable efficient long distance trade routes and also where the gaps were. In November we welcomed Dr Chris King speaking on the Buildings of Southwell.

We do not have a lecture in December but our members and friends will enjoy their annual faith supper in January.

You are most welcome to attend our talks – free for members and just £2.50 for visitors. Talks start at 7.30pm in the Village Hall.

Barbara Cast - President of Bleasby Local History Society

OUR VILLAGE HALL

Our Village Hall is suitable for all kinds of events. Coffee mornings, meetings, family parties, lectures, classes etc all take place in our well-appointed and attractive hall.

Each week or month there are regular events and these are as follows.

- On Monday mornings each week in term time the Bleasby Playgroup meets from 9.15am to 11.15am
- On Monday evenings at 7.30pm there is the Whist Group except on the second Monday in the month when it is
- The Parish Council meeting
- Tuesday at 10am there is Swing into Shape
- Once a month the Women's Institute meets on the third Tuesday and
- On the fourth Tuesday the Local History Society meets

- On Wednesday afternoons from 2pm to 4pm there is the Wednesday Group which meets for craft, board and card games and conversation

All these organisations welcome visitors to their meetings but it is helpful to be quite young to attend the Playgroup!

The hall costs £8 per hour to hire, fully inclusive - for parties we ask for a deposit. It is equipped with plenty of modern tables and chairs plus lots of crockery and cutlery.

The cutlery, crockery (including loads of mugs), wine and champagne glasses and equipment including electric and thermos tea urns can also be hired separately to the hall and there are also about forty plastic chairs and some tables for hire which can be used out of doors.

Information on how to book and for hire rates for equipment contact Vivienne Mayfield, on 830929 or email vivmayfield@aol.com.

SAFER NEIGHBOURHOOD GROUP

Representatives from local villages recently met with PCSO Keith Crowhurst and District Cllr Roger Blaney to discuss issues of concern in the area. School parking in several villages was on the agenda with problems being addressed not only at Bleasby but also at Halam, Kirklington and Lowdham. A burglary had been thwarted at Epperstone due to the owners having a remotely accessed CCTV system – a similar success to a recent attempt in Bleasby, so some residents may feel that these systems may well be worth considering. Bleasby matters raised, in addition to further discussion re school parking, included the speed at which some agricultural vehicles move through Bleasby and a suspicious car at Gibsmere which had been reported to the police.

Since the meeting there has been an attempt to gain access to the Waggon and Horses which, although some external damage was done, was thwarted because the pub wasn't empty as the would-be thief believed.

The Parish Plan Steering Group will be arranging a meeting for those who expressed concern about crime in the parish in the questionnaire.

It always pays to alert the police to any suspicious matter or minor theft as such things can often be part of a crime pattern. Remember to be extra vigilant over the Christmas period when there may be lots of rich pickings about and the advice is to always secure doors and windows even if you are just popping to your neighbours!

Peter Cast

ROB BROWN LTD PLUMBING AND HEATING

MOBILE 07973890499

NOW BASED IN BILSTHORPE

email robinb9@gmail.com
more than 20 years experience

INSTALLATION SERVICE & REPAIRS
OF DOMESTIC GAS APPLIANCES &
HEATING & HOT WATER SYSTEMS

ALL PLUMBING WORK UNDERTAKEN
SMALL BUILDING WORKS
AND PROPERTY REPAIRS
ELECTRICAL REPAIRS

DO YOU RENT PROPERTY?
WE DO LANDLORD,S GAS CERTIFICATES
MAINS PRESSURE HOT WATER
Fully insured /no call out fee



Making sure everything goes to plan



D. J. Hall Funeral Directors
62 King Street, Southwell,
Nottinghamshire NG25 0EN
(01636) 812481

A funeral plan leaves nothing to chance and provides **peace of mind** for you and those you care about.

We recommend funeral plans from Golden Charter, the UK's largest provider of plans to independent funeral directors like us. With a Golden Charter funeral plan you'll benefit from:

- **Fixing the cost** of our services at today's prices
- **Reassurance** for your family – no uncertainty or difficult decisions
- **Complete flexibility** to choose the funeral you want

Taking out a funeral plan is one of the most **thoughtful decisions** you could make.

Golden Charter 
Funeral Plans

The UK's largest independent funeral plan provider
yourfuneraldirectors.co.uk

GC-LIFT 8804

Home. There's no place like it.

For reliable, compassionate at home care, give us a call today for a free Care Consultation.

Home Instead
SENIOR CARE
to us, it's personal.

Inspected and rated

Outstanding ☆

 Care Quality
Commission

City & Guilds

We have English City &
Quality Award with a 5
star rating



THE QUEEN'S AWARD
FOR ENTERPRISE
INDEPENDENT



OUR CARE SERVICES

We offer personalised care services to meet you and your family's needs.

- Companionship care
- Home help
- Personal care
- Alzheimer's and dementia care
- Respite care
- Overnight and live in care



Home Instead allow your loved ones to stay happy and independent at home as they age, rather than anywhere else. Contact us today for a free, no-obligation Care Consultation.

We are very proud of our local reputation and honoured to be the only home care provider in Nottinghamshire to be inspected and rated as "outstanding" by the Care Quality Commission.

- ✓ We turn up on time - every time.
- ✓ Same CAREGivers every time.
- ✓ Minimum 1 hour visits.
- ✓ Our staff do not wear uniforms, so to everyone else, they look like family or friends.

Call our team today:

01949 480480

or 01636 550480

87 Main St, East Bridgford.
Nottingham NG13 8NH, UK
homeinstead.co.uk/eastnottingham

Your local Hearing Care Specialists

0115 961 8351

FREE HEARING CHECKS

EAR WAX REMOVAL

TINNITUS SUPPORT

HOME VISITS

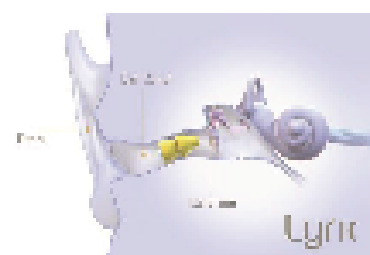
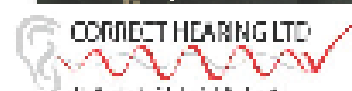
Whether you are looking into hearing issues for the first time or are struggling with your existing hearing aids then Correct Hearing can help.

We are a family run and owned independent practice, with over 30 years experience.

Call today for an informal chat or to request your FREE Hearing Guide 0800 368 47 47 or 0115 9618351



Sarah Vokes



Web: www.correcthearing.co.uk

Email: info@correcthearing.co.uk

242 Oakdale Road, Carlton, Notts, NG4 1AD

Ben Morgan

Painting & Decorating Services



T: 01636 831333

M: 07775 888851

E: ben@morganpainting.co.uk

Domestic

"We have used four different decorators over the last few years and every time, there has been a problem and the job has not been carried out to a satisfactory result. Ben was recommended to us and the job he did was fantastic and as we wanted. He is very professional in both his work and his personality. He offers very competitive rates and I would definitely use again and highly recommend."

Nicola & Nigel Bennett, Goverton

Rented

Office

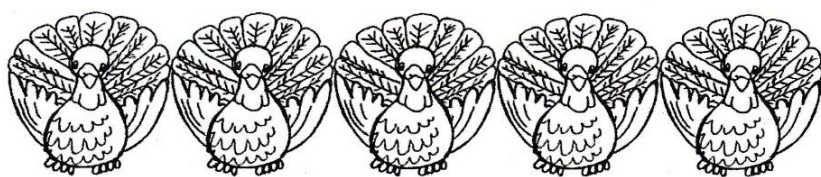
Insurance

"Ben has just completed our kitchen extension and done a fantastic job, I would highly recommend his services. He is highly skilled and professional with in depth knowledge of paint and products, ensuring our walls are wipeable and the paint will not fade. We feel this is money well spent as our decoration will stand the test of time in a heavily used kitchen."

Janine and Chris Ford, Southwell



BenMorganPainting&Decorating



JACKSON'S

CHRISTMAS TURKEYS

order now ! £3.60 pr 11b

We have been rearing dry plucked
turkeys here at our farm in

Gonalston FOR LAST 35 YEARS !

CALL



01159 665355

OR POP IN AND SEE US AT THE FARM

HOLME FARM GONALSTON NG14 7JA

The Robin Hood Theatre Presents



A CHRISTMAS CAROL

Written by Charles Dickens
adapted by Karen Louise Hebden
Directed by Jean Lebeter

This amateur production is presented by special arrangement
with Nick Hern Books.

12th to 16th December 2017 @ 7.30 p.m.
Plus a Matinee on Saturday 16th at 2.00 p.m.

The Robin Hood Theatre
Church Lane, Averham, Newark on Trent, NG23 5RB

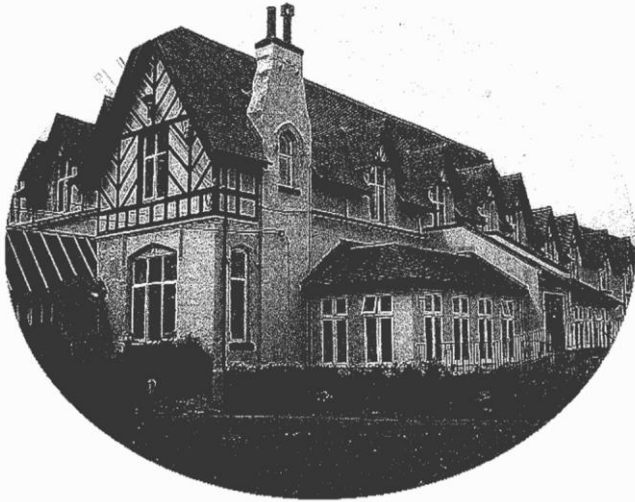
Tickets £12.00 – Members £10.00

Tickets available on line at: www.robinhoodtheatre.co.uk
or call 07733 179986 to reserve

LOCAL TRAVEL AGENCY MARKS 70TH ANNIVERSARY - CELEBRATIONS

START AT SOUTHWELL TRAVEL SHOW

The seventh annual Southwell Travel Show takes place on Saturday 20 January 2018 at the Saracen's Head Hotel in Southwell. The event – organised by Hyde Barker Travel of King Street, Southwell – is the first in a series of celebrations marking the travel company's 70 years in business. The story of Hyde Barker Travel started when Denzil and Peggy Hyde-Barker returned to England from India after WW2. The first holidays were organised from the front room of their house in Ravenshead just outside Mansfield and so successful were they that a year later – in 1948 – Denzil and Peggy opened 'Holiday Travel' in Belvedere Street, Mansfield. Son Michael Hyde-Barker joined the firm in 1960 and the company's name changed to Hyde-Barker Travel, a name that became familiar across the East Midlands as more branches opened in the 1960s and 70s. The travel industry went through many changes during the 1990s and 2000s but the Southwell shop continued to thrive thanks to its focus on customer service. In 2011 the Hyde-Barker family retired and passed ownership to Barbara Cray and John Lightwood, both of whom have decades of travel industry experience. Barbara and John launched the first Southwell Travel Show in 2012 and each year the number of exhibiting travel companies and visitors have increased. "In a couple of hours you can virtually travel the world, and talk to experts about your own holiday dreams, whether that is a cruise, a tailor-made trip of a lifetime or an escorted tour," says Barbara. This year's range of 26 travel companies includes well-known operators such as Titan and Riviera, and smaller specialists like Serenity Holidays, Typically Italian and Inside Japan. Hyde Barker staff will be on hand throughout, and appointments are also available at the agency between 3-4pm for those who want to discuss specific holiday arrangements. Entry to the Southwell Travel Show on 20 January is free, and all visitors are invited to take advantage of a £50 discount on any featured holiday booked by 27 February 2018. See www.hbtravel.co.uk for details.



Hazelford

The Provider of Quality Care

Our home is situated in a beautiful location with open views of the river and surrounding countryside. With lovely gardens and an abundance of wildlife, this makes Hazelford a delightful location for our residents, to some of whom we offer a short break; for others we become their home.

We pride ourselves in offering a home from home environment with an excellent ethos whereby our residents are involved in the decisions we take. We focus on our residents' aspirations, ideas, views and suggestions.

We have a person centred approach to the care of the residents: this approach is vital to ensure the best possible outcome and wellbeing.

Dementia care is a specialist area: we ensure with sensitivity that the resident is supported continually with person centred care planning, reinforcing daily the aspects of their lives they enjoy to ensure wellbeing and pleasures on a daily basis as, sadly, the previous day may be forgotten.

Our aim is to offer stimulating activities, with one to one time for those who may have dementia: we specialise in this area and our approaches create a relaxed harmonious environment for all.

Our bedrooms are large with views over the countryside and offer a choice of colour and furnishings, personalising them to suit our residents' preferences and choice.

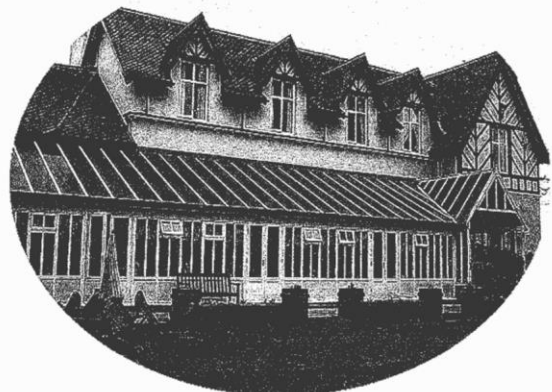
Please feel able to visit our home at any time – a warm welcome awaits you. We encourage families to also have an input into the plans the home may make. We hold family and friends of the home evenings.

With spring and summer comes along a plan of social events: for the summer an annual garden party, summer fair and schedule of outings to various venues.

HAZELFORD

**Boat Lane
Bleasby
Nottingham
NG14 7FT**

Tel: 01636 830207



THE RAILWAY

LOWDHAM

WINTER SALE MENU

JANUARY 2018

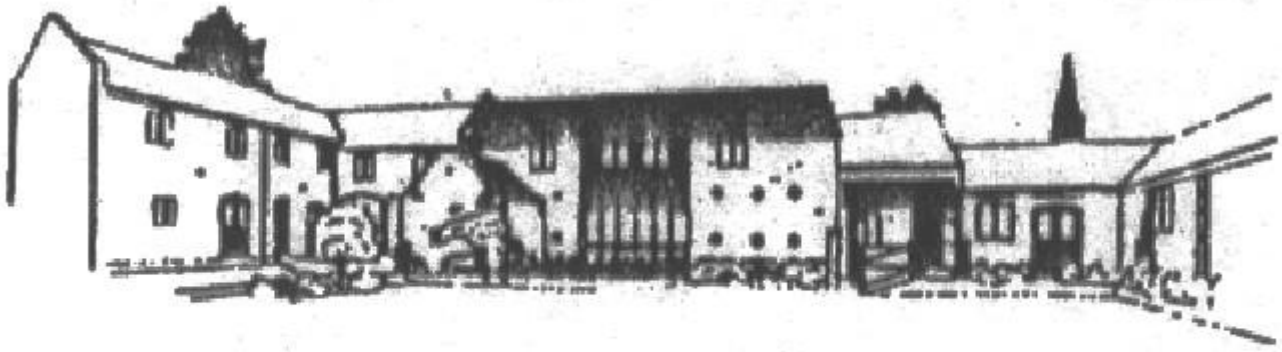


AVAILABLE MONDAY - SATURDAY
2ND - 31ST JANUARY

Station Road | Lowdham | Nottingham | NG14 7DU

www.railwaylowdham.co.uk | 0115 966 3222





THE BYARS

A small, family owned and managed, independent Care
Home situated amidst the rural landscape of the Trent
Valley

The highest quality care in the highest quality
accommodation

Our home offers long and short term care for the elderly

Viewing welcomed. Further details on request

THE BYARS

· CAYTHORPE · NR. LOWDHAM ·
NOTTINGHAMSHIRE · NG14 7EB

REGISTERED NURSING HOME

Tel: 0115 9663981



WHAT'S ON AT THE WAGGON

1st December ~ Christmas menu starts

9th December ~ Christmas Lights switch-on in the Glebe Field & the Waggon

17th December ~ Christmas Carols followed by Christmas Quiz

22nd December ~ Robert Perry Singing Live from 8pm

24th December ~ Christmas Eve Singalong by the Piano

25th December ~ Christmas Day drinks 12 noon to 2.30pm

26th December ~ open 12 noon to 4pm

31st December ~ New Year's Eve Party with kids' bouncy castle disco from 6pm – adults from 9pm – **free buffet** – donations to charity

1st January ~ New Year's Day brunch 12 noon to 3pm (booking advisable)

2nd January ~ normal service resumes

20th January ~ Ian's only getting older Again! Let's party the night away.
All welcome

To reserve a table call 01636 830283

Whilst every effort is made to ensure accuracy, the editorial team cannot accept responsibility for errors or omissions in articles appearing in Bleasby News. The views expressed in Bleasby News are not necessarily those of the Editors nor of Bleasby Parish Council. Bleasby News is distributed by local volunteers to whom we remain very grateful. Printed by Toot Hill School Reprographics.



Porters Shop in Newark Market Square by Mark Goodman



Newark Castle by Mark Goodman



The Waggon and Horses – your friendly local

Gypsy Lane and the pub in 1912

