

# **BLEASBY NEWS**



**BLEASBY PARISH - OUR FARMING HERITAGE**

**APRIL 2017**

**We feature in this edition.....**



Memorial in Germany of the crash-site of Wing Commander William Graham

Bleasby's Farming Heritage



Fire and Flood in Bleasby

## **WELCOME TO THE APRIL ISSUE OF BLEASBY NEWS**

Spring 2017 came in with a wonderful array of early spring flowers – snowdrops have been prolific, ruffles of primroses lined our paths and flowerbeds, violets popped up in every available space and the delicate small early daffodils showed their loveliness. Now, in late March, there are ranks of the larger varieties of daffodils, blazing their bright yellowness, and yet further hints of loveliness to come – fritillaries in bud, cowslips beginning to raise their heads from the earth (*paigles* we called them) and all the host of treasures still to bloom. What could be lovelier than a spring garden? Well, hopefully, lots of Bleasby Parish gardens in June when we open our gardens. More gardens always welcome for June 11<sup>th</sup>.

Easter will soon be upon us with a number of events over that period, a performance in Thurgarton Church and a very special one in St Mary's, plus the promise of an Easter egg hunt – details throughout this edition and check the diary of events too.

We always look forward to receiving your articles, views, ideas, poems etc so please send plenty for the June edition to:- Rachael Andrew, Sutton House, [pran@suttonhs.fsworld.co.uk](mailto:pran@suttonhs.fsworld.co.uk) or Barbara Cast, Little Dower House, [barbaracast@btinternet.com](mailto:barbaracast@btinternet.com) by Wednesday 17<sup>th</sup> May – a little earlier this time due to impending school half-term.

*Your Editors, Rachael and Barbara*

## **BLEASBY PARISH COUNCIL NEWS AND TIMES REMEMBERED**

Bleasby is a very busy village and, looking at the Diary of Events in the centre of this edition, the next few weeks are going to be as busy as ever.

This Easter the Waggon and Horses team are organising, with the Council's support, the now traditional Easter Egg Hunt on the Glebe Field. The Church, currently running its well supported Lent Lunches, will be holding a range of special events and services, and the Trent Choir will be performing a cantata at Thurgarton.

Moving on to 1<sup>st</sup> May, the Parish Council in conjunction with Bleasby School, will be organising its May Day celebration on the Glebe Field and offers of help to support the maypole rehearsals and the event would be gratefully received. The Annual Parish Meeting will be held on Tuesday, May 2<sup>nd</sup>, at which reports from the various organisations in the parish will be given and to which all residents are welcome.

Our forthcoming Parish Plan Questionnaire will be trialled in the near future before being circulated to all homes in the parish and this will become the basis upon which the Council will produce a Parish Plan to act as a touchstone for its decision making and future planning.

A significant milestone has now been reached by the Bleasby Aircrew Memorial Group with the confirmation from the County Council that a grant of £3500 has been

awarded. Ken Ogilvie's fund-raising activities and many talks to groups in the area have already raised £6000 towards the memorial and he is apprising the Parish Council on what could prove to be a major future parish event on 1<sup>st</sup> September 2018 when its unveiling is planned.

Tragedies in the past provide us with lessons for the future and recent incidents have seemed to highlight potential modern dangers. On 27<sup>th</sup> January a van carrying gas cylinders caught fire, crossed the level crossing and then stopped just over the other side. One of our councillors, Angela Dunning, had been following the van and tried to alert the driver of the situation. When he did realise that the van was on fire he abandoned it, whilst quick-acting Angela, Ann Woolder and John the Postman alerted Fire and Rescue, set about warning nearby householders and stopping traffic from approaching the crossing. Fortunately the Southwell based fire engine arrived before anything more serious could occur.

Meanwhile, down the other end of Bleasby a water main burst and caused significant flooding of the road and adjacent drives but, fortunately, our Flood Action Group, with Ali Sutherland at the fore, was able to divert the flow, erect warning signs and help manage the traffic until the County Council and Severn Trent were able to take over. Please read Ali's cautionary account later on.

There have been worrying situations at the level crossing as a result of traffic moving forward over the crossing only to find their exit blocked by oncoming traffic. It is most important that vehicles do not enter the yellow hatched area on the crossing and its approaches under any circumstances until a clear exit can be seen. Network Rail will use all its resources to prosecute anyone who fails to observe this, using safety camera records and the electronic radar and signalling systems which can give precise circumstances. Network Rail is currently monitoring the situation, with the Parish Council working closely with them. In the interest of safety a representative of Network Rail made a first-class presentation to all the pupils of Bleasby School to which the pupils responded most seriously and intelligently.

A spate of dog fouling occurred for a period in late February/early March and the Council responded by fixing more dog fouling warning notices along the worst affected area and this action, along with social media appeals from parents, the reaction of aggrieved responsible dog owners and some discreet investigations, appear to have reduced the problem. A fine of up to £1000 can be imposed upon offenders!

Thankfully there has been no naturally occurring flooding in the parish this winter but the Council has acted on increasing concerns about the difficulty of getting house insurance as a result of our flood risk postcodes and has written to our MP, Robert Jenrick, asking him to investigate why this is so when the Government's Flood Re arrangements should have eased this problem. The Parish Council has been storing all its flood signs, supporting equipment and materials in temporary accommodation around the parish and is currently looking for a more permanent home for our flood store. Could you help with the offer of accommodation?

Speeding vehicles still travel through the parish. In order to address this the Parish Council is working with the school to create pupil inspired 30mph labels to be fixed to refuse bins so that every week there is a visually appealing reminder along the length of the main street. A trial number of residents have been approached and, without exception, they agreed that it was a good idea, were happy to have them on their own bins and would even be prepared to pay towards their cost! What a great community we have! Thank you.

We are still awaiting a response to the of the Council's request for further information on the proposed telecommunications mast over which there is limited planning control and which cannot as yet be found an acceptable location within the area.

Much of our present day concerns about safety communications, parish character and environment have been repeated many times in the past and recent research into archives has revealed that the need for a bus service to Southwell has been on the agenda since 1948, that the train service timetable was deemed inadequate in 1957, that we were making donations in 1953 to the Southwell Flood Disaster Fund, that there were strong objections to the introduction of mains water in 1931, that there was inadequate accommodation for village gatherings in 1922 and there had been no woman on the Parish Council until 1946 and she was replaced within one year by yet another man! Are things changing?

*Peter Cast, Chair, on behalf of the Parish Council*

## **FROM THE REVD PHIL**

‘We have two ears and one mouth  
so that we can listen  
twice as much as we speak.’  
Epictetus

Dear All,

I once had a PCC secretary whose minutes reflected her own perspective more than that of the meeting! It was a long time ago, but I remember introducing a topic with a paper, discussing it to a conclusion and none of it appeared in the minutes! It makes me laugh now, but I guess we've all had the experience of not being listened to...? You say something perhaps very personal and the other person appears not to have heard any of it. How does it make you feel?!

Some of you might be wondering what the Church of England is up to when it comes to same sex marriage. Whichever view of marriage you may have, there are others who thinks the opposite. So the Bishops spend 3 years in 'shared conversations', their report upholds the traditional view and then Synod rejects it! It was rejected because after 3 years 'listening', it was as if the Bishops still hadn't really 'heard'.

The issue is not so much about one's view of 'marriage'. It is whether people of difference are to be accepted as loved by God and fully part of the Church and our community.

In my view God loves all of us without prejudice. Jesus came to show and embody this. There is nothing more fundamental to how we are to live together. If it were not so, I would hand in my 'dog collar' tomorrow. If Jesus accepted the faith and company of 'publicans and sinners', who are we to walk on the other side from those of different sexual orientation? These are values for all, not just the Church. It's just a shame that the Church, along with my sometime PCC secretary, has such difficulty with it.

'Don't explain your philosophy. Embody it.'

Epictetus

*The Revd Phil*

*Epictetus - a Greek stoic philosopher of the 1st century*

phil\_07@btinternet.com - [www.westtrentchurches.co.uk](http://www.westtrentchurches.co.uk) - 07720010066

The Revd Phil is contactable as above or via the administrator for the West Trent Group: Paula Carlin on 07419 176021 or at [beneficeofwesttrent@gmail.com](mailto:beneficeofwesttrent@gmail.com)

## **BLEASBY LOCAL HISTORY SOCIETY**

The talk in February given by Ken Ogilvie was very interesting and thought-provoking. Entitled "Who lived in my house in 1901?" it covered Ken's exploration of the former residents of Forge Cottage and the complications of following through the succession of those with interests in the property over the years. On March 28<sup>th</sup> it was the AGM – business and interest mixed with an update on the Bleasby Aircrew Memorial and a "what is it" around a selection of old and very old artefacts.

We start our new programme on April 25<sup>th</sup> with a talk by Peter Lyth on "The History of Brackenhurst" and then, on May 23<sup>rd</sup> it is "The Hallaton Treasure" by Peter Liddle. This relates to the discovery of the largest hoard of over 5000 silver and gold coins and other items such as a silver-gilt Roman parade helmet – coming from very early in the Roman period. Most of the coins were not Roman however, but are of the Corieltavi tribe, the people who inhabited Nottinghamshire and Leicestershire in the Iron Age.

You are most welcome to attend our talks – members free and £2.50 for visitors. Talks start at 7.30pm in the Village Hall.

Barbara Cast - President of Bleasby Local History Society



# **LAKE DISTRICT HOLIDAY COTTAGE**

Borrowdale Road, Keswick

3 Bedrooms | Sleeps 6

**TO LET**

Fully refurbished holiday cottage with gas central heating,  
open fire place and private parking

Views overlooking the fells, front and rear gardens,  
superb location

**For further details please ring**

**01636 830209 | 07812 101303**

**A. Rickett & Son,  
Bleasby  
Builder & Contractor  
Tel: 01636 830468**



St Mary's Church, Bleasby  
on  
Wednesday, 12<sup>th</sup> April 2017 at 7.30 pm  
Retiring Collection

## **VOICES IN A MYSTERY**

an Easter Cycle by Paul Mein

Ordinary lives caught up in the events of the Crucifixion  
A new exciting drama cycle of poems, performed by The Nine

"Powerful, deeply imagined, utterly convincing." (Rosie Bailey, poet and critic)

"So cleverly written with small touches of humour to lighten it. I was completely caught up in it." (audience member)

"An absolutely wonderful way to begin the most important three day period in the Church's year. A remarkable and deeply moving new take on the Passion events."  
(Rev. Christopher Harrison, St Peter's, Nottingham)

### **TRENT CHURCHES CHOIR**

On Passion Sunday, 2<sup>nd</sup> April, the Trent Churches Choir is singing Stainer's Crucifixion in Thurgarton Priory Church at 6pm. This sacred cantata, which we performed in 2008 and 2014, lasts an hour and contains some well-known hymns.

We hope you will be able to join us.

*John King*



## **ST MARY'S CHURCH LENT LUNCHES**

Please join us for last two of the informal soup and cheese lunches on these Saturdays in Lent from 12.30 to 2.pm. Donations on the day to the hosts' chosen charity.

SATURDAY	NAME OF HOSTS	VENUE	CHARITY
1 <sup>st</sup> April	Sarah & Tom Hall	Orchard End Station Road	Keframa School Build
8 <sup>th</sup> April	Alison & Peter Sutherland	Alligin Main Street 831026	St Mary's Church

## **CHURCH NEWS**

### Churchyard

Following storm damage to a large tree which fell across the dyke and blocked the drive to the Old Vicarage, a survey of all the trees in the churchyard was undertaken by a specialist. The survey recommends essential and advisory work which we hope to have done over the coming months in order of priority. This will be a costly exercise but should save even more expensive emergency work and potential damage to property in the future. The first stage is likely to include raising the crown of yew trees along the Eastern boundary.

Spring bulbs are always a picture amongst the graves at this time of year and this year is no exception. It is a pity then that, in contravention of churchyard regulations, plastic flowers, collections of large plant pots, shrubs and inappropriate items unsympathetic to the rural setting continue to appear. This is unfortunate and particularly upsetting to those people whose loved ones are buried nearby and who themselves adhere closely to guidelines. In the first instance our policy is to politely request removal of these items by letter or phone call. If no action is taken or in the event of an unsatisfactory outcome wardens will remove offending items, as advised in diocesan guidelines. The same applies to seasonal items such as Christmas wreaths which are left for more than two months. It is our aim always to keep our churchyard as a place of beauty, tranquillity and solace fitting to the memory of **all** those who have been buried there over the years and not subject to the sometimes inappropriate actions of individuals.

The ancient stone trough, kindly rescued from a patch of brambles in the Glebe Field by Andrew and James Rickett and Brian Lewin, and repositioned under the tower, is full of spring colour and brightens the approach to church from the car park. A gift from the late Christine Lewin and Ali Sutherland's hard work have made this possible.

## Lent

Saturday **Lent Lunches** are in full swing at the time of writing, and are well attended and enjoyed by all. Useful sums of money (around £100) are raised by donations at each lunch for the hosts' chosen charity. There is still time to attend lunches on April 1<sup>st</sup> at Orchard End (Sarah and Tom Hall) and on April 8<sup>th</sup> at Alligin (Ali and Peter Sutherland). Just come along.

On the first four Mondays in Lent the Vicar led a **Lent Course** on St Mark's Gospel. This stimulated lots of discussion, some disagreement and revealed new insights. All of us found it a worthwhile venture.

## Holy Week (see further information about events in this edition)

The events of Holy week will be marked throughout the Benefice in many different ways. On Wednesday 12<sup>th</sup> April at 7.30pm in St Mary's there will be a performance of an **Easter Drama Cycle** written by local poet Paul Mein and spoken by The Nine. The Vicar will lead a service for **Maundy Thursday** on 13<sup>th</sup> April at Halloughton at 7pm. On Friday 14<sup>th</sup> there will be the traditional **Good Friday Walk** starting at Upton with coffee at 10am and a service at 10.15, taking in Rolleston, Morton (where we will eat our picnic lunches in the village hall) and ending with tea at Hoveringham. Also on Good Friday, at 2 pm at Rolleston there will be a service of the **Stations of the Cross**.

## Easter Day

**The Benefice Easter Service** will take place at St Mary's Bleasby on Sunday 16<sup>th</sup> April at 10.30.

## The Annual Parochial Church Meeting

This will take place on Thursday 20<sup>th</sup> April at 7pm in St Mary's. The work of the church throughout the past year will be reported, accounts presented and officers appointed. All interested are invited to attend.

## Parish Administrator

Sarah Hall has recently resigned her position as Parish Administrator. We are very sorry to lose Sarah, who has been efficient, discreet, tolerant of late deadlines and pleasant to work with. We will all miss her cheerful presence. Sarah who lives in Bleasby still hopes to be involved in Church life. Paula Carlin has been appointed in Sarah's place and has quickly found her feet. We look forward to getting to know her better.

## Podium

We are grateful to the kindness and skill of Edmund Salter who has made a new podium for the lectern. He has used old oak taken (with permission!) from Forge Cottage during renovations. As we have come to learn from Edmund no short cuts were taken - dovetail joints are used throughout. It is a vast improvement on the previous podium which had become very shabby. Readers can now be seen more clearly and feel much safer. We are very grateful to Edmund for his gift to the church.

*Diana Temperley and Rachael Andrew, Churchwardens*

## **BLEASBY FARMS: DIGGING INTO THE PAST - SCRATCHING THE SURFACE**

It occurred to me as I walked down the hill from High Cross and looked out over the Trent Valley, how much the farming landscape must have changed in the last 100 years. Questions to which I had few answers popped into my head and left me wondering what sort of information had been recorded about changes in farming and, particularly, about Bleasby farms. I hope that I can start the ball rolling in gathering some information while there are still people in the village who remember such things and/or can point me in the direction of written and other records. By my calculations there were about 18 farms in Bleasby at one time. This figure includes what might properly be called small holdings but which provided an income for a family alongside other enterprises. What surprises me is that only a very few (2?) are still worked by their owners. Do you have any information that would be useful in compiling some sort of record? This does not pretend to be serious historical research but an interesting resource for future reference. The table below shows a list of those farms which I think existed at one time as distinct working units. I will be very happy to be told I'm wrong if the accuser then goes on to provide accurate information. Members of the farming community as well as current owners are all potential sources of valuable information. Please be in touch if you think you are one of them. Have you any old maps, sale inventories, farm records or photographs? There will be others who have stories to tell about casual work at harvest time or stories passed down from family members who worked on farms. It would be good to gather this information together. Your help is needed please!

### **Farms on or up the hill and in Goverton**

Little Rudsey Farm; Rudsey Farm; High Cross Farm; Brickyard Farm; South Hill Farm; Corner Farm; Mount Pleasant Farm

### **Village Farms**

Manor Farm; Station Farm; Highlow Farm; The Old Farm

### **Gypsy Lane Farms.**

North Farm, "Bond's" Farm.

### **Gibsmere Farms**

"Lewin" Farm, "Toplis" Farm, Gibsmere Farm, Gibsmere House Farm, Little Glebe Farm, Glebe Farm.

*Rachael Andrew*

## **BLEASBY JUBILEE PONDS – OUR NATURE TABLE**

A walk around the Ponds in spring is not only a delight to all the senses – it is probably for many of us an evocation of childhood with all those simple joys and pleasures of discovery, freedom and affinity with the natural world.

At Infant School we all had the traditional “nature table” to focus our attention, interest and wonder and it was then that the lifelong seeds could be set within our growing human sensitivities. Here the pussy willow and hazel catkins were artistically arranged on complementary colours and materials, labelled words first took meaning and relevance, and colour, form and texture could be expressed in our first experiments with crayon and paint.

Just now your family walk could furnish; a dash of violets; a peppering of pussy willow; a blaze of daffodils; a flourish of blackthorn and – to finish the picture – a stippling of gorse. The warming wind riffling the water’s surface will carry to you a trilling of amorous wrens, the melody of territorial robins, the piping of male chaffinches and, as a contrast, the gagging of greylag geese and the trumpeting of paired Canadas – all along with the chiffchaff’s persistent announcement of arrival, repetitively calling its own name.

Today three pairs of great-crested grebes can be seen dancing whilst sleek, starkly patterned goosander glide streamlined through the water; and that elusive, but ever present, kingfisher is a piping arrow shot – glanced in a moment – but never forgotten thereafter.

All this lies upon your doorstep too and, thanks to the hard work of the working parties from both the parish and the angling club, pathways have been cleared of overhanging and windblown-damaged trees, surfaces improved with Parish Council purchased gravel and a path across the meadow reinstated and defined by manual shifting of tons of gravel. Our village lengthsman and contractor, Richard Covill, has continued the planned restoration/conservation work of the meadow and its boundary hedgerow and is now awaiting the opportunity to make a last spring cut over the grassland before leaving it to develop summer’s floral meadow display.

The angling club (Bleasby Carp Syndicate) does a great deal in providing musclepower, equipment and know-how to support the site’s management plan and – in their all-green clothing and equipment, with rigid club rules ensuring neat, clean and tidy fishing bases (swims) – quietly blend into the scene as they patiently wait for those 30lb plus carp catches!

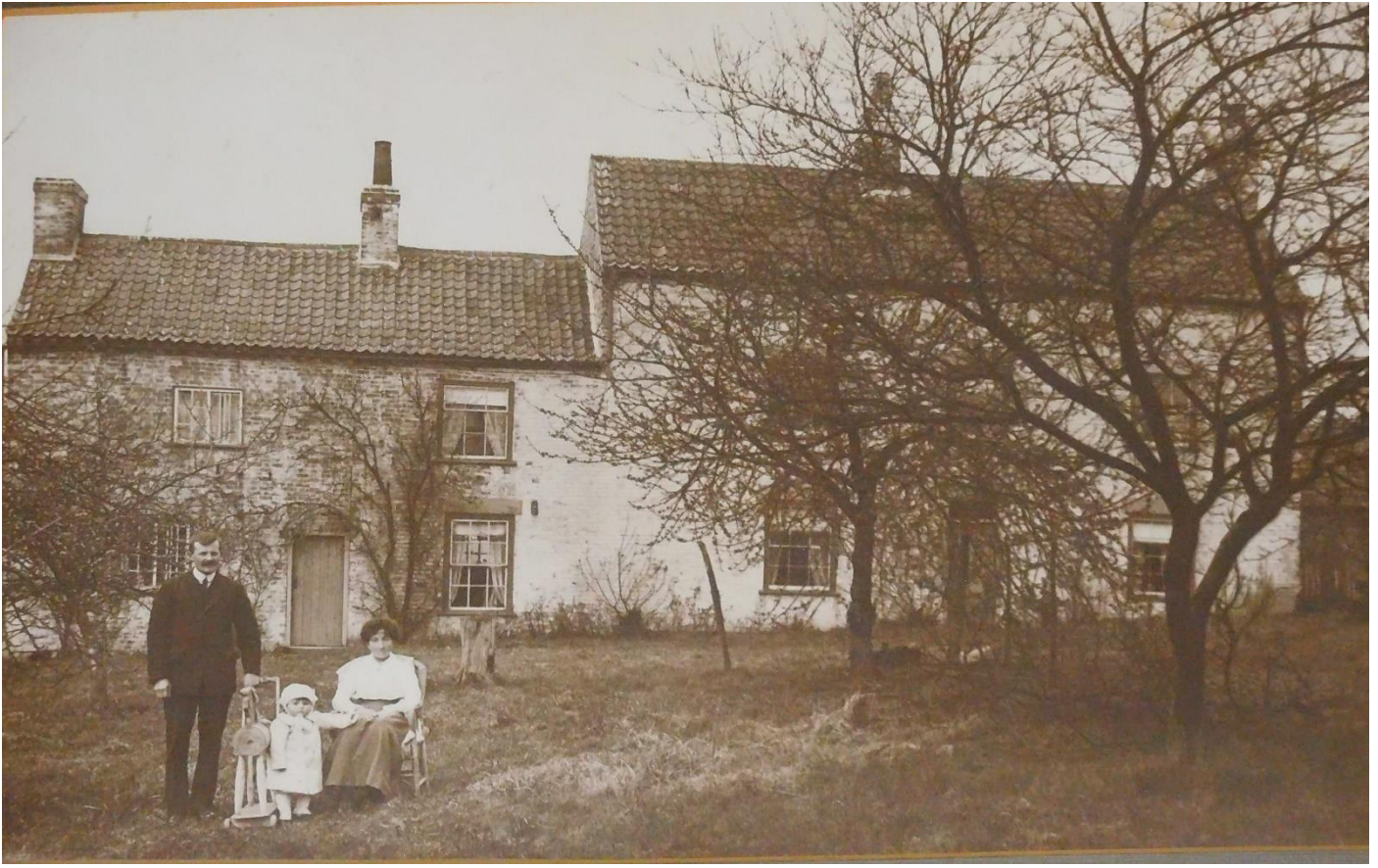
To quote William Henry Davies “What is this life, if full of care, we have no time to stand and stare”.

*Peter Cast*

## **SPEED SKATING SUCCESS OF BLEASBY BOY**

Congratulations to **Freddie Polak** who has broken a British Speed Skating record for his age group. Freddie, who is 10 and lives in Bleasby, achieved this record in Trento, Italy, where he competed against 31 skaters from all over Europe. Freddie will compete in a series of events before the National Championships in April. We wish him every success.

## **RUDSEY FARM – ONE OF OUR LOCAL FARMS**



The photograph above shows John Fox Marriott, his wife and son (also John Fox Marriott), at the front of Rudsey farmhouse about 1916. They may not have been there long but we know they were there the previous year when John Junior was born. The farm belonged to the church commissioners at that time but was bought by the Marriotts at a later date. It was a mixed arable farm of some 150 acres growing wheat, barley, oats and sugar beet with cows, sheep and pigs. The land extended from the Brackenhurst Estate boundary to High Cross, and adjoined Little Rudsey on one side and Brickyard Farm on the other. The Marriotts worked further land on the Trent-side which was rented. There was a substantial farmhouse built in the early 1800s (the structure remains much as it was then), two semi-detached farm cottages, a brick barn, stables, a blacksmith's shop and various other out-buildings around a crew yard. The tied cottages were occupied by farm workers, one of whom was John Winn and another Robert Scrivener, both of whom worked for the Marriotts at some time. Heavy horses were shod in the blacksmith's shop and agricultural machinery was also repaired there. Much of the horse tack (some belonging to a horse named Kit) was



still there in the 1950s. Some of the land was later sold to a Mr Charlie Farnsworth of Little Carlton who farmed there for some years before selling to the Fox brothers who built a farmhouse and outbuildings on that site and thus established High Cross Farm.



John Fox Marriott Junior (photographed outside the farmhouse in 1978), having taken over the farm from his father, died in 1979 and his family moved into the village. The land was sold to neighbouring farmers, Hammonds of Morton, and the buildings sold separately. The farm buildings were later converted into dwellings.

*Rachael Andrew*

*(Based on the memories of Wendy Fordyce  
of Manor Close)*

## **YOU NEVER KNOW WHERE SOME RESEARCH MAY TAKE YOU**

Some years ago, a small booklet was published by Bleasby Local History Society entitled *Bleasby in Wartime* written by the late Mrs Beatrice Wright (copies still available). In this book she recorded that a young RAF servicemen came to the village during the war and lived at Roseneath Cottage (now Forge Cottage), and that he was killed whilst on active service when his aircraft crashed SSE of Lingen in Germany. The airman's name was Wing Commander William Graham.

As a part of the restoration work for the St Mary's Church War Memorial, I did some research to find out more about this airman, and found amongst other things, that he was married in 1940 to Jean, and that they had a son whom they named Alastair, who was born just two weeks after his father's death in the aircraft crash.

My research also revealed that the aircraft was a Vickers Wellington, R1473, from, at the time, the newly operational 304 (Polish) Squadron based at Syerston, which was shot down by ground anti-aircraft fire and also a German night-fighter on the 8/9 May 1941. The aircraft had been sent to bomb the U-Boat submarine bases in Bremen and had a crew of six men, five of whom were killed in the crash with one surviving and being captured and made a prisoner of war. The research identified the names of all of the crew members. Having completed the initial research, I published my findings on the Bleasby Village website and also on the website *Aircrew Remembered* and at the time thought that nothing much more could be done.

It was some months after publication in 2014 that I received the first contact from an interested reader. This was Alastair Graham, William and Jean's son, who was prompted to make inquiries when he found a photograph in an old family album that



had belonged to his mother which showed her sitting outside a house which he did not recognise and, on more careful examination, found a hand written note on the photo album page saying that it was taken in Bleasby. His search for Bleasby found the village website and my research, and so he contacted the Parish Council Clerk asking to be put in touch with the person who had done the research and also asked if it would be possible to visit the house where his parents had lived. He was most surprised to find that the person who had carried out and published the research presently lived in the house where his parents had lived. I subsequently met Alastair and his wife when they visited Bleasby, and I thought once again that this meeting would perhaps be the end of the project. However, in January of this year, I received another query, this time from Germany. The inquiry came through the Aircrew Remembered website help desk, asking for my contact details. The message was passed to me and I followed it up.

The German contact (Jochen Ecchoff) said that he had further information about the crash and the crew that he wanted to share with me. Amazingly he knew precisely where the crash site was, and he had made and placed a memorial cross and plaque for the crew at the site (he sent a photograph), and he had quite a number of original small parts from the aircraft which he had found over the years by searching the crash site area with a metal detector.

I made contact with Alastair Graham and gently relayed this information to him. He immediately said that he would like to visit the site to meet with Jochen as he wanted to thank him personally for his kindness shown all those years ago and also to visit the site of the crash. Jochen said that he would be delighted to meet Alastair and so a visit was arranged for the weekend of 11/12 March. I was invited to attend with Lynda.

It turned out that Jochen had developed a hobby of researching WWII aircraft crashes in the Lingen Ems area of Germany. Over a period of around 40 years, he had accumulated a vast amount of information from German sources about the aircraft crashes that had occurred in the area, and had also collected a considerable quantity of small pieces of debris wreckage from various crash sites that he had visited, all of which he had carefully documented. He had only recently found the "Aircrew Remembered" website and was very keen for his accumulated information to be added to their online database. However, as his records are all in paper form and in German, in practice this is going to be a considerable challenge.

Jochen had arranged for us to be taken to the aircraft crash site and to see his wooden memorial for the crew. Alastair was therefore able to spend a few moments in quiet reflection at the very spot where his father was killed in 1941. We also met the farmer landowner, Oliver Ester, who had given permission for Jochen and two of his friends to carry out a further search of the ground with metal detectors whilst we were there. After about an hour, they had gathered a small collection of new found fragments of wreckage from the aircraft which they gave to me. The ground is still yielding up such items after 75 years.

We received warm welcomes and kind and generous hospitality whilst in Lingen from everyone that we met. Jochen and his friends and family were clearly surprised and

delighted that we had travelled all the way from England to meet them, given the historical background, but the whole weekend was one of friendliness and reconciliation.



For me, the research is carrying on. Alastair very much wants to find and contact any descendants of the four other crew members who were killed to let them have all of the new information. This is proving to be a very difficult new challenge, but one crew member that I have researched in depth now appears to have a very interesting family history.

Who would have thought that reading a short paragraph in a very locally written Bleasby booklet would lead to such an unusual and memorable weekend in the company of some delightful people in Lingen Emms, Germany.

On the way home, I reflected on the fact that it took Lynda and I nearly a day to travel from Bleasby to Lingen by car and ferry, via Harwich and the Hoek of Holland. This route follows almost exactly the flight path taken by Wellington R1473 on the fateful night of 8/9 May, 1941. Then, the crew of R1473 took about three hours to reach Lingen but to a very different reception.

*Ken Ogilvie*

## **BLEASBY WI NEWS**

We all enjoyed the talk given by Revd Phil White about St Dorcas Orphanage. The slides showing the vibrant colours of Kenya in the sunshine were a sharp contrast to the gloom of an English February evening. Other contrasts soon became apparent as we saw the “before and after” slides of the orphanage buildings and the “dormitories”. We were particularly touched by the “before and after” photographs of Marian, who was found wandering and alone near the orphanage and eventually admitted. Phil is a trustee of “Bungoma Calling” and it was clear from his talk that children’s lives are being transformed by the work of the charity. A highlight of the early years of the orphanage was the opening ceremony for the new pit latrines - a marked contrast here with our own lives. The charity provides funds for the orphanage and school fees so that the orphanage children can attend school. If you are interested in finding out more go to the Bungoma Calling website at [www.bungomacalling.co.uk](http://www.bungomacalling.co.uk) .

There was standing room only at the Waggon at the Book Group’s monthly meeting, the subject being Harvest by Jim Crace. Not a favourite with all the members but some spoke passionately about how much they had enjoyed it. We later discovered that it is a set text for A level this year so no wonder we all found it challenging!

A trip to Malt Cross, the former Victorian Music Hall in Nottingham, was a great success in early March. Ladies to Lunch on the first Monday of the month remains popular, the venue for March being the Savile Restaurant in Rufford Park. The spring weather was a bonus for those who enjoy a walk. For those members who like needlework and crafts there is plenty on offer at District level including, recently, patchwork and appliqué, as well as the weekly needlework and games sessions on a Wednesday afternoon in our Village Hall.

At our March meeting Wanda Adams gave a talk about the charity named Police Convoys which started as actual convoys of necessities taken to war-torn countries by police officers during the Balkan Wars. It now sends container loads of a variety of needed items to countries in Africa, Eastern Europe, Pakistan and Syria amongst others. The charity also sets up projects for local people to take over and run such as making washable and reusable sanitary products for girls and women in Malawi and Zambia. The charity receives gifts of all sorts from all kinds of places – beds and mattresses from hospitals, toothbrushes by the million, a variety of cricket equipment from a leading cricketing organisation. All, or nearly all, gifts find a use and a home. There are some countries which they find more difficult to provide for – for example Rwanda will not now take electrical goods or plastics – for their own practical reasons, so the decision has been made to pay for the education of children who were affected by the genocide in that country instead of sending containers.

We can help by using the Aid Convoy collection bins and also, for a current project, giving pillowcases and lengths of ribbon or lace to make simple children's dresses.

Bleasby WI meetings take place on the third Tuesday of the month at 7.30 in the village Hall. The April meeting will be the annual meeting where we receive the annual reports of the activities of Bleasby WI and officers are elected. Unlike most organisations, we are fortunate that we seem not to have a shortage of members willing to take on committee work. Those of us who do not stand up to the plate should be extremely grateful to those that do. Our thriving WI, the envy of many local groups, is a success largely as a result of the work of the committee. In particular we should be grateful to Monica Richardson who has carried the burden of presidency with unstinting enthusiasm and good humour for many years.

Please contact WI Secretary Pam Brandreth on 830094 if you are interested in joining or would like to give a talk.

*Rachael Andrew*

### **AN UNEXPECTED FLOOD!**

As one of the volunteer flood wardens for the village I, along with all the other wardens, usually get warning of increasing river levels or high rainfall if a flood is expected. However on Friday 27<sup>th</sup> January we had a burst water main right in the middle of my patch and within 10 minutes the water was across the road and creeping up people's drives. Peter Cast and Elaine France sorted out the signage to warn motorists and lots of you rang Severn Trent to alert them of the leak or low water

pressure. Thank you for doing that - this immediate response in high volumes meant we got quick attention.

To mitigate the rising water levels and stop it flooding a property I opened two inspection chambers into the foul system and the water drained away down these at a very fast rate. This was matched by the rate of the leak so it did not clear the road. After a couple of hours all seemed stable and Severn Trent attended as did a traffic management company.

However there was some excitement at school time when those walking home from school started to play in the flood water. The water may also have had sewage in it - bear in mind the inspection pits were still open and the water was still draining at a very fast pace. Despite signs and cones, young children were very close to these hazards and there were supervising adults who were unaware of this hazard until I pointed it out.

It is some years since we had flood waters in the village (thanks to the good offices of the flood team) but please remember the expert advice from the Environment agency - **Floods can kill**. Don't try to walk or drive through floodwater - six inches of fast flowing water can knock you over and two feet of water will float your car. Manhole covers may have come off and there may be other hazards you can't see.

Luckily the ST repair team arrived by mid-afternoon and received a steady supply of hot drinks, from lovely villagers, until they completed a temporary repair at midnight. On this occasion no one was hurt and no property was damaged. Two properties had slight ingress of foul water. Flooding can arrive quickly and unexpectedly. Luckily three volunteer flood wardens were at home and it was sorted quickly. We all need to be aware of the hazards to make sure we stay safe and reduce risk. And we need to tell others if we see hazards.

House insurance and Flooding There has been some concern over house insurance in the recent months for some properties in the village. **Flood Re** is the scheme set up to help those in vulnerable areas and a lot of the insurers are signed up to it. Further information can be found at [www.knowyourfloodrisk.co.uk/flood-advice-guidance](http://www.knowyourfloodrisk.co.uk/flood-advice-guidance)

It is worth noting this will not cover those in council tax band H or ANY PROPERTY BUILT SINCE 2009. The Environment Agency states, "It would be foolish to allow properties being built today, in an era of good flood mapping and modelling, to get subsidised flood insurance. If the planning system is right and works properly then there shouldn't be any homes in this post-2009 category that would need help".

The Parish Council is currently liaising with Mr Robert Jenrick, our MP, about these concerns. If you are having trouble getting house insurance, please see [www.floodre.co.uk](http://www.floodre.co.uk)

*Alison Sutherland*

## **WORKING MORNING IN THE CHURCHYARD**

Bleasby Churchyard is a bit like the painting of the Forth Rail Bridge - there is always something to be done. There are many villagers who care for the grave of a loved one and others that offer help just because they want to. On Friday 28<sup>th</sup> April, 9.30am -12, we are having a working morning, coffee and biscuits provided, to do a general tidy up of the churchyard, clearing ivy off graves, cutting back brambles etc to try and keep it looking beautiful throughout the summer. No need to book, please just come and bring some secateurs or other gardening equipment with you. If you want to bring and use a strimmer please contact Ali in advance.

Together we can make it look really good for the summer.

*Ali Sutherland 831026*

## **GOOD FRIDAY WALK**

### **April 14<sup>th</sup>**

This year we will be starting at Upton and walking via Rolleston, Morton (where we will be having lunch as usual), Bleasby, Thurgarton Methodist Chapel and finishing with tea at Hoveringham. There will be a short service of 10-15 minutes in each church. There are usually about 20 people walking at any one time. It is an opportunity to ponder on what you have heard or simple to enjoy the outdoors, good conversation and a sense of community. Please join us for the whole day, part of the day or drop into a service. We look forward to seeing you. Starting with coffee at Upton at 10am.

Service times

Upton 10.15	Bleasby at 1.45
Rolleston at 11am	Thurgarton at 2.45
Morton at 12.00 with lunch at 12.15-1.00	Hoveringham at 3.45

***Are you aware that you can sign up for email updates on local information from the following website [www.bleasbycommunity.uk](http://www.bleasbycommunity.uk) . The community website is maintained and monitored by Bleasby Parish Council. PC information can be found on the Council website [www.bleasbyparishcouncil.uk](http://www.bleasbyparishcouncil.uk).***

### Bleasby Diary of Events

Date	Time	Event	Location
Saturday 1 <sup>st</sup> April	9.30am	Jubilee Ponds Working Party	JPs
Saturday 1 <sup>st</sup> April	12.30	Lent Lunch	Orchard End
Sunday 2 <sup>nd</sup> April	10.30am	Service of Morning Praise for Everyone	St Mary's
Sunday 2 <sup>nd</sup> April	6pm	The Trent Choir sings Stainer's Crucifixion	St Peter's Thurgarton
Monday 3 <sup>rd</sup> April		School Easter holidays start	
Saturday 8 <sup>th</sup> April	12.30	Last Lent Lunch	Alligin
Sunday 9 <sup>th</sup> April	11am	Palm Sunday service of Holy Communion	St Mary's
Monday 10 <sup>th</sup> April	7.30pm	Meeting of Bleasby Parish Council	Village Hall
Wednesday 12 <sup>th</sup> April	7.30pm	Voices in a Mystery - an Easter cycle by Paul Mein	St Mary's
Thursday 13 <sup>th</sup> April	7pm	Maundy Thursday service	St James' Halloughton
Friday 14 <sup>th</sup> April	10am	Good Friday Walk	Starts at Upton Church
Saturday 15 <sup>th</sup> April	12 noon	Waggon and Horses Easter Egg Hunt	Glebe Field
Sunday 16 <sup>th</sup> April	10.30am	Easter Sunday Benefice Service of Holy Communion	St Mary's
Sunday 16 <sup>th</sup> April	9.30am	Jubilee Ponds Working Party	JPs
Tuesday 18 <sup>th</sup> April		School resumes	
Tuesday 18 <sup>th</sup> April	7.30pm	Annual Meeting of WI	Village Hall
Thursday 20 <sup>th</sup> April	7pm	Annual Parochial Church Meeting	St Mary's
Sunday 23 <sup>rd</sup> April	8am	Easy Riders bike ride	Start at W&H
Sunday 23 <sup>rd</sup> April	10.30am	Service of Morning Praise for Everyone	St Mary's



Tuesday 25 <sup>th</sup> April	7.30pm	Meeting of Bleasby Local History Society with Peter Lyth on The History of Brackenhurst	Village Hall
Friday 28 <sup>th</sup> April	9.30am	Churchyard working morning	St Mary's churchyard
Sunday 30 <sup>th</sup> April	10.30am	Benefice Service of Holy Communion	St Peter's Thurgarton
Monday 1 <sup>st</sup> May		May Day celebrations	Glebe Field
Tuesday 2 <sup>nd</sup> May	7.30pm	Annual Parish Meeting	Village Hall
Thursday 4 <sup>th</sup> May		County Council elections	Village Hall
Sunday 7 <sup>th</sup> May	10.30am	Service of Morning Praise	St Mary's
Monday 8 <sup>th</sup> May	7.30pm	Meeting of Bleasby Parish Council	Village Hall
Sunday 14 <sup>th</sup> May	11am	Service of Holy Communion	St Mary's
Monday 15 <sup>th</sup> May	9.30am	WI Village-wide litter pick	Meet Glebe Field
Tuesday 16 <sup>th</sup> May	7.30pm	Meeting of WI	Village Hall
Wednesday 17 <sup>th</sup> May		Deadline for Bleasby News items	
Thursday 18 <sup>th</sup> May	7.30pm	Village Hall Management Committee AGM	Village Hall
Sunday 21 <sup>st</sup> May	9.30am	Jubilee Ponds Working Party	JPs
Sunday 21 <sup>st</sup> May	10.30am	Benefice Service of Holy Communion	Holy Trinity Rolleston
Tuesday 23 <sup>rd</sup> May	7.30pm	Meeting of Bleasby Local History Society with Peter Liddle on the Hallaton Treasure	Village Hall
Sunday 28 <sup>th</sup> May	9am	Service of Holy Communion	St Mary's
Sunday 28 <sup>th</sup> May		Hoveringham Rally and Show	Hoveringham
Monday 29 <sup>th</sup> May		Spring Bank Holiday - half term starts	
Sunday 4 <sup>th</sup> June		Jubilee Ponds Working Party	JPs
<b>Sunday 11<sup>th</sup> June 2017</b>	<b>Bleasby Open Gardens Day</b> <b>Put it in your diaries now - especially gardeners!</b>		

## OUR VILLAGE

Bleasby is an attractive place to live, with good location in relation to surrounding towns and amenities, also boasting great schools which are an added draw for families. Our village has a number of assets, clubs and groups to be involved with..... others to provide support to those in need, including a welcoming church.....

As the older generation of our village wind down, not so many of the younger villagers are coming forward and getting involved. With social media being their main source of communication and television being an easy entertainment option they no longer feel the need to go out and socialise. Eventually this will result in losing the attractive elements which make our village what it is today. We have already lost our village post office which was a vital commodity for many retired locals. What next? The pub! The church! The Village Hall!

There are examples of other villages that have lost such assets, for example, North Wheatley near Retford lost their post office and were soon to lose their pub but, realising their loss, they brought about a solution. North Wheatley collectively agreed that each household use the shop and the pub more regularly so those businesses could keep going. The Sun Inn re-opened, including a children's area at the back of the pub, and the Post Office was re-located into a converted barn and also sold local produce. We all need to do a little bit to maintain village life as we know it.

If you have any ideas or would like to get involved, have your say! There is an opportunity in the forthcoming **Parish Plan questionnaire**. It will provide valuable information that the parish planners will collate to consider what further improvements to Bleasby Parish could be made.

The last parish plan was created over 10 years ago, out of that much good was achieved.....

Thank you for your support

Sarah Roscoe of Orchard Close, member of the Parish Plan Steering Group

## April Church Services in the West Trent Group

	Bleasby	Halloughton	Hoveringham	Morton	Rolleston	Thurgarton	Upton
Sunday 2nd	10.30 MPE		10.30 MPE	9.00 HC	10.30 HC	10.30 MPE	10.30 MPE
Palm Sunday 9th	11.00 HC	6pm EP	10.30 MPE	10.30 MPE	9.30 MPE	10.30 HC	10.30 HC
Tuesday 11th							10.00 HC
Maundy Thursday 13th		7pm Maundy Thursday Service					
Good Friday 14th					2pm Stations of the Cross		
Easter Sunday 16th	10.30 Benefice HC						
Thursday 20th							Zip Bam Boo
Sunday 23rd	10.30 MPE		9.00 HC	10.30 HC	10.30 MPE	10.30 with Methodists	10.30 MPE
Sunday 30th						10.30.HC	

(HC = Holy Communion, MP = Morning Praise, MPE = Morning Praise for Everyone, EP = Evening Prayer)



Robin about to feed his mate

*photo by Willis Gent*



**BLEASBY**  
— BIKERS —

**Got a road bike? Not used it recently?**

**Can only spare a couple of hours?**

**Join the 'Easy Riders' for a  
friendly ride-out**

**Meet 8am outside Waggon & Horses**

**Every Sunday**

**All adults welcome**

**1<sup>st</sup> ride - Sunday 23<sup>rd</sup> April**

**Approx. 20 mile easy/medium pace  
(coffee stop half way)**

**Just turn up or phone Gray Gent**

**07816 151319 for more info**

## **CRICKET CLUB AT THURGARTON**

They say it's good to live through interesting times. Fiskerton Cricket Club and Thurgarton Cricket Club are delighted to announce a merger of two of the oldest and strongest clubs in the Trent Valley, to be known as Fiskerton & Thurgarton Cricket Club for the upcoming 2017 season and beyond. The merger came from a desire to provide the local community with better access to bigger and better facilities, more opportunities for players both young and old to enjoy the game, and to move the game forwards in this area, including villages such as Bleasby.

The merger is designed to provide a platform for cricket to develop at all levels and for all participants, young and old, to secure the long term future of recreational cricket in this corner of the Trent Valley.

Fielding three Saturday teams in the Gunn & Moore South Notts Cricket League, two Sunday teams in the Newark Alliance Cricket League and a mid-week team in the Newark Evening Cricket League, they will be a force to be reckoned with.

Building on the youth set ups, the club will field teams in Kwik Cricket and hard ball junior cricket and give opportunities for those young players to move to adult cricket. For those retiring cricketers there is an opportunity to give something back to the game by teaching supporting and encouraging those younger players.

Uniquely, with Fiskerton and Thurgarton separated by only 3 miles (with the village of Bleasby in between) the club will utilise both the current grounds and assets to ensure cricket is still played in both villages and to provide access to the sport to as wide an area as possible.

We can offer opportunities to cricketers, umpires and scorers of all levels and abilities, and new members will be very welcome. To get involved please contact Ed Akers of 21 Hawthorn Close, Bleasby - 07701 045514.

*Ed Akers*

*And John Holmes tells us that in 1819 . . . . .*

*“A cricket match was play’d in a meadow, belonging to Mr William Horspool, near the River Trent between Southwell and Ratcliff clubs, which was won by the latter at one innings. Also another game was played between Bleasby and Fiskerton clubs, in a meadow at Fiskerton on Tuesday the 26<sup>th</sup> October this year which was won with ease by Bleasby. Bleasby first and second innings amounted to 147 runs and Fiskerton ditto 84 runs.”*

## **BEST KEPT VILLAGE COMPETITION**

At its meeting held on 9<sup>th</sup> January, Bleasby Parish Council decided that Bleasby should be entered into the Best Kept Village Competition this year which is run by the Council for the Protection of Rural England. Whilst it has to be the council which enters the competition, it would have to be the whole parish community which takes part and gets into the spirit of the event.

Each village which enters is allocated marks under the following headings:

- Community facilities, for example – bus shelters and bus stops, telephone kiosks, village hall, village green, verges and gutters, streams, church and churchyard, notice boards and notices, footpath map, stiles and signs, seats etc, school and its surroundings (maximum of 40 marks)
- Domestic, for example – houses, gardens, hedges, frontages (maximum of 30 marks)
- Commercial enterprises, for example – pub and carpark, farm buildings, work entrances (maximum of 25 marks)
- Obvious community effort (maximum of 5 marks)

The types of feature will, of course, vary from village to village, and a village will not be judged by the number of features but by evidence of pride and involvement and the judges' marking will reflect community effort.

The first round of judging will take place in June so there is still time to tidy up and get things looking shipshape.

Last year's winners were Radcliffe on Trent, with Farnsfield as runner up in the 2000 - 10000 population category: East Markham, with Beckingham as runner up in the 700 – 2000 population category: Caunton, with Harby as runner up in the 300 – 700 population category: Linby, with East Drayton as runner up in the population under 300 category.

Bleasby, with its population of 840, would come in category B.

More information can be found on

[www.hugofox.com/community/cpre-nottinghamshire-10680/best-kept-village-2016](http://www.hugofox.com/community/cpre-nottinghamshire-10680/best-kept-village-2016)

*Belina Boyer, Clerk to Bleasby Parish Council*



Going away?

Why not leave your pets with us?

# Valley Boarding Kennels & Cattery



*Situated between Bleasby and Fiskerton in the heart of the countryside*

**\*\* Kennels and catteries with outside individual runs \*\***

**Please visit to see our facilities**

**Gypsy Lane, Fiskerton | Telephone: 01636 830268**

[www.valley.talktalk.net](http://www.valley.talktalk.net)

## NJN JOINERY

Phone: Nigel Newcombe  
on

01636 525506

or

Mobile: 07837 235427

**ALL TYPES OF JOINERY  
AND  
MAINTENANCE WORK  
UNDERTAKEN**



## **USE IT OR LOSE IT!**

<b>Lowdham to Southwell bus timetable</b>				
Lowdham Main St near Medical Centre		1010	1220	1345
Lowdham Main St near the Magna Carta		1013	1223	1348
Lowdham Station Rd near the station		1014	1224	1349
Caythorpe Main St	0906	1017	1227	request
Hoveringham Main St/Boat Ln junction	0910	1021	1231	request
Thurgarton Bleasby Rd	0917	1028	1238	request
Bleasby Main St	0921	1032	1242	request
Fiskerton Main St near Post Office	0926	1037	1247	request
Morton Main St	0929	1040	1250	request
Southwell Church St by Minster	0933	1044	1254	
Southwell Ropewalk by Medical Centre	0935	1046	1256	

Where marked “request” the bus will stop for setting down only

<b>Southwell to Lowdham bus timetable</b>			
Southwell Ropewalk by Medical Centre		1135	1300
Southwell Church St by Minster		1139	1304
Morton Main St		1144	1309
Fiskerton Main St near Post Office		1147	1312
Bleasby Main St		1153	1318
Thurgarton Bleasby Rd		1156	1321
Hoveringham Main St/Boat Ln junction	0953	1203	1328
Caythorpe Main St	0957	1207	1332
Lowdham Station Rd near the station	1001	1211	1336
Lowdham Main St near the Magna Carta	1003	1213	1338
Lowdham Main St near Medical Centre	1006	1216	1341

## **SOUTHWELL GARDENING CLUB**

SGC are presenting “An Evening with Adam Frost” on Thursday 4<sup>th</sup> May at the Minster School – doors open at 7pm for a 7.30pm start. Tickets £12.50 at the Cathedral Shop or AJ Beckett Electrical. Adam is a Chelsea Gold Winner and a BBC Gardeners’ World presenter.

All welcome.

# Ben Morgan

## Painting & Decorating Services



**T: 01636 831333**

**M: 07775 888851**

**E: [ben@morganpainting.co.uk](mailto:ben@morganpainting.co.uk)**

### Domestic

**"We have used four different decorators over the last few years and every time, there has been a problem and the job has not been carried out to a satisfactory result. Ben was recommended to us and the job he did was fantastic and as we wanted. He is very professional in both his work and his personality. He offers very competitive rates and I would definitely use again and highly recommend."**

***Nicola & Nigel Bennett, Goverton***

### Rented

### Office

### Insurance

**"Ben has just completed our kitchen extension and done a fantastic job, I would highly recommend his services. He is highly skilled and professional with in depth knowledge of paint and products, ensuring our walls are wipeable and the paint will not fade. We feel this is money well spent as our decoration will stand the test of time in a heavily used kitchen."**

***Janine and Chris Ford, Southwell***



**BenMorganPainting&Decorating**

# Your local Hearing Care Specialists

**0115 961 8351**

**FREE HEARING CHECKS**

**EAR WAX REMOVAL**

**TINNITUS SUPPORT**

**HOME VISITS**

Whether you are looking into hearing issues for the first time or are struggling with your existing hearing aids then Correct Hearing can help.

We are a family run and owned independent practice, with over 30 years experience.

Call today for an informal chat or to request your FREE Hearing Guide 0800 368 47 47 or 0115 9618351



Sarah Vokes



Web: [www.correcthearing.co.uk](http://www.correcthearing.co.uk)

Email: [info@correcthearing.co.uk](mailto:info@correcthearing.co.uk)

242 Oakdale Road, Carlton, Notts, NG4 1AD



# ACADEME ROOFING

Quality Roofing Services



**NOTTINGHAM'S NUMBER 1 ROOFING PROFESSIONALS**

CALL OUR OFFICE ON:  
**0115 950 6444**

“Our reputation is built  
on **QUALITY**, first class  
customer service, reliability  
and professionalism”



Business Directory  
Registered Member

Business  
directory



Decra  
Roof Systems



LOCAL AUTHORITY APPROVED  
ROOFING CONTRACTORS

**All Areas of Nottinghamshire covered  
CALL TODAY!**

- Slate & Tile Roofs
- Single Ply Membranes
- Flat Roofs
- Guttering, Soffits and Fascias
- Chimneys Re-Pointed
- Industrial Roofs/Domestic
- Specialists in all lead work
- Re-roofs & New Roofs

**OVER 30 YEARS EXPERIENCE • FREE ESTIMATES**

**[www.academeroofing.co.uk](http://www.academeroofing.co.uk) • [office@academeroofing.co.uk](mailto:office@academeroofing.co.uk)**

23 • Little Tennis Street • Colwick • Nottingham NG2 4EL



# *Hazelford*

*The Provider of Quality Care*

Our home is situated in a beautiful location with open views of the river and surrounding countryside. With lovely gardens and an abundance of wildlife, this makes Hazelford a delightful location for our residents, to some of whom we offer a short break; for others we become their home.

We pride ourselves in offering a home from home environment with an excellent ethos whereby our residents are involved in the decisions we take. We focus on our residents' aspirations, ideas, views and suggestions.

We have a person centred approach to the care of the residents: this approach is vital to ensure the best possible outcome and wellbeing.

Dementia care is a specialist area: we ensure with sensitivity that the resident is supported continually with person centred care planning, reinforcing daily the aspects of their lives they enjoy to ensure wellbeing and pleasures on a daily basis as, sadly, the previous day may be forgotten.

Our aim is to offer stimulating activities, with one to one time for those who may have dementia: we specialise in this area and our approaches create a relaxed harmonious environment for all.

Our bedrooms are large with views over the countryside and offer a choice of colour and furnishings, personalising them to suit our residents' preferences and choice.

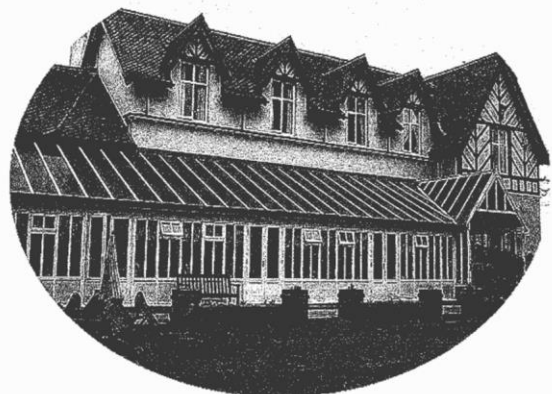
Please feel able to visit our home at any time – a warm welcome awaits you. We encourage families to also have an input into the plans the home may make. We hold family and friends of the home evenings.

With spring and summer comes along a plan of social events: for the summer an annual garden party, summer fair and schedule of outings to various venues.

## **HAZELFORD**

**Boat Lane  
Bleasby  
Nottingham  
NG14 7FT**

**Tel: 01636 830207**







**HYDEBARKER**  
WORLDWIDE TRAVEL & ADVENTURE

Three circular images: a smiling woman and child, a tropical beach with a palm tree, and a leopard's face.

**Tel: 01636 816 262**  
www.hbtravel.co.uk | 1 King Street, Southwell

**NEW ZEALAND SPECIALIST**

**ABTA**  
AFFILIATED

## RECYCLING PLASTIC BOTTLES

We are failing here in Britain to recycle nearly half the total of bottles used and discarded every day. 16 million plastic bottles end up in landfill – eventually many in the oceans where they take years to break down. Those who remove litter from our lanes will know that there are great number of plastic bottles amongst that litter. Surely we could do better!

*Whilst every effort is made to ensure accuracy, the editorial team cannot accept responsibility for errors or omissions in articles appearing in Bleasby News. The views expressed in Bleasby News are not necessarily those of the Editors nor of Bleasby Parish Council. Bleasby News is distributed by local volunteers to whom we remain very grateful. Printed by Toot Hill School Reprographics.*

# NOW OPEN



## THE RAILWAY, LOWDHAM

We are a great family friendly village pub, offering creative fresh dishes, real ales, craft lagers, exclusive wines and the warmest of welcomes.

Please come and visit us for breakfast, lunch, dinner or just a simple drink in our cosy bar. We also have a fabulous garden and outdoor dining terrace ready for when the sun shines!

Book now at [www.railwaylowdham.co.uk](http://www.railwaylowdham.co.uk) or telephone 0115 9663222  
Look out on our facebook page for special events and menus.



THE RAILWAY | STATION RD | LOWDHAM | NG14 7DU



Live at Home  
**Bake Off**  
2017



**Get your whisks and rolling pins at the ready!**

Children's Category - (Up to 15 yrs), Best Sponge Cake Category and Best Show Stopper Cake with a Garden/Spring Time Theme. Prizes will be awarded, please contact 01636 816565 for an entry form.

**Event:** Southwell Methodist Church

**Date:** Saturday 29th April 2017

**Time:** Cake Entries - to be submitted by 10am £3 per category  
Open from 11.30am for refreshments, craft and cake sales

**LIVE AT HOME** Southwell & District Live at Home  
Unit 10 Southwell Business Centre, Crew Lane, Southwell, NG25 0TX  
Tel: 01636 816565

  MHA  
bringing quality to later life

## **LIVE AT HOME BAKE OFF 2017**

Southwell Live at Home Scheme is a local charity which aims to reduce loneliness and social isolation by offering friendship, activities and support to older people in the local community. We offer various activities for people to get involved with: - Weekly Coffee Friendship Morning, x2 Lunch Clubs, Regular Outings, Boat Trips, Boccia Group and Befriending for those people who aren't able to get out and about a volunteer befriender will visit in your own home for 1-2 hours a week/fortnightly. Transport can be arranged to some of our activities by our volunteer drivers. Anyone who may be interested in joining the Scheme would need to contact the office to arrange for a member of staff to do a home visit/assessment. We are always on the lookout for new volunteers to join the Scheme, if anyone has a spare couple of hours and would like to help older people in their local community, please get in touch. The Scheme's telephone number is 01636 816565, please don't be put off by the answer phone we work in the community a lot of the time. Tables are available to hire (at a £10 donation) on 29<sup>th</sup> April for anyone who would like to sell crafts etc. If anyone is interested they would need to contact the office to book a space, 01636 816565.

We are trying to raise money and the Scheme's profile ensuring we can continue supporting older people in the local area.



We have Ballet, Modern and Tap  
Dance Classes in Fiskerton for all  
ages!

Why not let your Precious Princess or Playful Pirate take their  
first steps in to the Magical World of Ballet! With our Princess  
and Pirate Ballet class for ages 3 and over!

We have classes for adults too! Zumba and  
Tap

For more information please visit our  
website



[www.attitudedanceschool.com](http://www.attitudedanceschool.com)  
[info@attitudedanceschool.com](mailto:info@attitudedanceschool.com)  
07974 745740



Come and join us  
for



with



Wednesday 7.30 - 8.15pm  
At The Arthur Radford Hall  
Fiskerton cum Morton

For more information visit [www.attitudedanceschool.com](http://www.attitudedanceschool.com)  
Or call 07974 745740

# **ROB BROWN LTD PLUMBING AND HEATING**

MOBILE 07973890499

NOW BASED IN BILSTHORPE

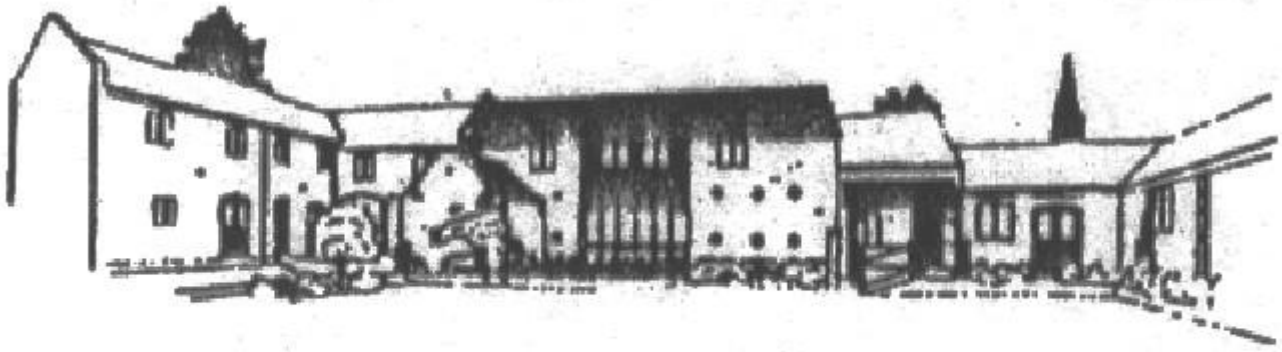
email [robinb9@gmail.com](mailto:robinb9@gmail.com)  
more than 20 years experience

INSTALLATION SERVICE & REPAIRS  
OF DOMESTIC GAS APPLIANCES &  
HEATING & HOT WATER SYSTEMS

ALL PLUMBING WORK UNDERTAKEN  
SMALL BUILDING WORKS  
AND PROPERTY REPAIRS  
ELECTRICAL REPAIRS

DO YOU RENT PROPERTY?  
WE DO LANDLORD,S GAS CERTIFICATES  
MAINS PRESSURE HOT WATER  
Fully insured /no call out fee





# THE BYARS

A small, family owned and managed, independent Care  
Home situated amidst the rural landscape of the Trent  
Valley

The highest quality care in the highest quality  
accommodation

Our home offers long and short term care for the elderly

Viewing welcomed. Further details on request

THE BYARS

· CAYTHORPE · NR. LOWDHAM ·  
NOTTINGHAMSHIRE · NG14 7EB

REGISTERED NURSING HOME

**Tel: 0115 9663981**





### **News & Events**

**Burger Night - Thursday 6<sup>th</sup> April**  
5.30pm to 9.00pm

**Easter Egg Hunt & BBQ – Saturday 15<sup>th</sup> April**  
12:00pm onwards

**Live Music with Robert Perry – Friday 21<sup>st</sup> April**

**St George's Day Celebrations – Sunday 23<sup>rd</sup> April**

**Curry Night - Thursday 27<sup>th</sup> April**  
5.30pm to 9.00pm

**Tapas Night - Thursday 4<sup>h</sup> May**  
5.30pm to 9.00pm

**Waggon BBQ – Saturday 3<sup>rd</sup> June**  
12.00pm onwards

**The Waggon Summer Party – Saturday 24<sup>th</sup> June**

**Sunday Lunch served every week from 12.30pm to 4.00pm**  
*(Booking highly recommended)*

**Takeaway Wednesday**  
Pizza, kebabs, fish/scampi & chips, steak pie  
Served from 5.00pm to 9.00pm  
***(Normal menu also available)***

**Food Available**  
**Wed 5.30pm onwards until Sunday 4.00pm**

***QUIZ NIGHT every Sunday at 8.30pm***  
***To reserve a table call 01636 830283***

Happy Easter

# The Waggon & Horses

Bleasby

## Easter Egg Hunt & BBQ

Saturday 15th April 2017

Egg Hunt 12pm - 1pm  
(Glebe Field)

BBQ 12pm onwards

To ensure that we put the correct order  
for Easter Eggs into the Easter Bunny  
please can you let us know you are  
coming either via Facebook or you can  
email us at the  
[waggonbleasby@gmail.com](mailto:waggonbleasby@gmail.com)

