

BLEASBY NEWS



**We were well geared up for Bleasby Open
Gardens and Church**

AUGUST 2019

FREE
2-5pm

BLEASBY Bike Fest

SUNDAY 1ST SEPTEMBER

GLEBE FIELD
Gypsy Lane, Bleasby

**Free medal for all
children competing**



ACTIVITIES INCLUDE: skills courses, bike limbo, slow races & an opportunity to ride safely on a closed road.

FREE EXPERT TUITION

for everyone from toddlers to adults, balance bikes & pedal bikes available for use on the day for those without their own. Fun day for all the family - free of charge.

HELMETS ARE COMPULSORY



Refreshments by Bleasby WI available @ the Village Hall and BBQ @ The Waggon



Registration 2-4pm Finish at 5pm



In conjunction
with:



With thanks for
donations from:



Bleasby events
group working
on behalf of



WELCOME TO THE AUGUST EDITION OF BLEASBY NEWS

Well, we really had a splendid June with the wonderful Open Gardens and Church day which involved so many talented and innovative people from gardeners to carpark attendants. We are grateful to Dan O'Neil of Southwell Garden Centre and Sally Maloney of Crink Lane Nursery for their continued and valuable support for Open Gardens.

Lots of interesting items in BN this edition so have a look at what has happened and what's to look forward to.

Oh and I better not fail to mention that Boris came to see rural congestion in action!

As always we will be pleased to receive all types of articles, pictures, ideas and news etc – send all your items for the October edition by **Monday, 16th September**, to Rachael at prandrew74@outlook.com or Barbara at barbaracast@btinternet.com

Bleasby News editors, Barbara and Rachael

PARISH COUNCIL REPORT – CHANGING THE FACE(S) OF BLEASBY

Time does not stand still and change in all respects is inevitable. Politics, technology and changing climate move us inexorably onwards (some may say backwards) towards an uncertain future that will certainly be different in lifestyle and environment to that of the present. The Parish Council, of course, tries to keep abreast of changes and to help contribute towards the parish's development in line with changing needs and circumstances and the Parish Plan offers some guidance to the Council in respect of the aspirations of villagers.

I am delighted to report that, following our appeal for parishioners to join our depleted Council, we have had three much welcomed and noble volunteers, Sarah Roscoe, Nicola Winn and Robert Wallin, stepping forward to join us. They have already attended a Council meeting as prospective members and as part of a 'taster' induction programme to help confirm their understandings of the workings of a parish council before making a final commitment.

Whilst we have, at a stroke, gained three confirmed new councillors, I am very sorry to have to report the advance notice of resignation of Angela Dunning, our much valued and committed councillor of the past two years. She has played a major role as a member of the Parish Plan Steering Group, the Road Management and Safety Group and the Jubilee Ponds Management and Working Party. Hers was the brilliant idea of the bin stickers, which you will notice has been adopted by our neighbour villages, although theirs are not so decorative! It is with great reluctance that Angela, because of increasing family demands, has had to consider resignation. Fortunately she intends to continue her support for the work of the Council wherever and whenever she can and even hopes to rejoin when circumstances allow. We will miss her positivity, initiative, enthusiasm and joie-de-vivre.

Bleasby's appeal was certainly raised dramatically by the highly successful Bleasby Open Gardens and Church event back in June. The gardens themselves were a joy to behold and represented many, many hours of planning, preparation and labour brought to the height of perfection on the day. We offer congratulations and sincere thanks to the willing residents whose gardens were admired by hundreds of visitors. Thanks must also go, of course, to the noble group of five who masterminded this, and previous, Open Garden events and to those who raised, gave and sold superb quality plants and the earnest team who baked, served and sold hundreds of cakes. In all around £2k was raised and shared between St Mary's Church and the Village Hall.

The route along Main Street between the open gardens and beyond was quite remarkably changed by the eye-catching, original and even amusing additions to the streetscene made by many residents who spruced and planted up their garden frontages and put out colourfully bedecked floral buckets, bikes, barrows, boxes and boots in response to the Events Group's Bleasby in Bloom appeal – a change to be sustained! And it was a perfect demonstration of marvellous cooperation, support and pride by almost the whole Bleasby community. So many of you contributed to the day in one form or another. Even the entire Glebe Field, so beautifully laid out in formal 'parking pattern', between the flower-smothered Waggon and Horses and the church with its beautiful floral displays, was a sight to behold. The WI, Bleasby School, the Village Volunteers and the highly organised car parking team all played their critical roles in producing a text book village event.

We have new events planned for the autumn and we hope that you will be equally supportive of the Bike Fest on 1st September and our own Apple Festival on 12th October – something for everyone at both events. The Glebe Field is available for other parish events and activities – we were pleased that the Playgroup informally organised a children's summer games and picnic and that the WI is holding an upcycling table-top sale on 14th September to raise funds for Notts Wildlife Trust – please come and buy and sell all those good quality items that need a new home. Start putting suitable things aside today! The latest event to be approved by the Council is a Bleasby School generated Fun Dog Training and Education Day when children will be helped to become capable and responsible dog owners – for such a worthwhile project it was decided to waive the "No Dogs on the Glebe Field" ruling.

If you were disappointed that you missed your opportunity to help positively with the changing face of the whole parish, then fortune shines upon you – there is still a vacancy just waiting for you on Bleasby Parish Council! Please apply today!

Peter Cast, Chair of the Parish Council

FROM THE REVD PHIL

Dear All, I am writing in the middle of the Conservative leadership 'race'. Perhaps like you, I find this to be an irritating and powerless process? Most irksome are some of the tax changes proposed by the candidates which favour the wealthier amongst us.

None as far as I understand favours the least able to pay? Little has been said about the dire state of social care funding. Only Theresa May has even mentioned the climate crisis, proposing 0% carbon emissions by 2050. Hooray! Surely this issue will make Brexit look like a Sunday School picnic. Do you remember those?

Given the Experian data for our area, you may disagree? Our world is ordered unfairly. Between 1970 - 2016 the pay of the top 1% rose by 216%, whilst the three richest people have the same wealth as 48 of the poorest countries of the world put together. In the USA the richest 1% have the same wealth as the bottom 90%. The world rigidly favours the wealthy, and we are they. Where is our compassion, our generosity?

The orphanage we support through Bungoma Calling recently experienced severe drought and soaring food prices. Cattle died and crops failed. A reminder of climate change effects in Africa. Bungoma Calling had the spare cash for two large bags of beans and a water lorry delivery. It helped, though it would be good to do more.

Thank you those who supported the Seven Churches Walk on Sunday 21st July. There is still time to send a donation, or to come with me to visit the Orphanage at the end of September. Please get in touch about these options.

Ok I'll get off my soap box now....

Best wishes, The Revd Phil

CHURCH NEWS

Open Gardens Sunday seems a long time ago but is certainly not forgotten. There will be comments on the main events elsewhere but it would be remiss of us if we weren't to thank the flower arrangers who made the church look so welcoming and attractive. More people than ever before on an Open Gardens day visited the church, approximately 40 for each hour between 2 pm and 6pm which is when stewards were there to welcome visitors. Using the Glebe Field was a factor, the gate into the church car park being close at hand, so many people began their tour with the church. Judging by their reactions they were not disappointed, the flowers as well as the building and its peaceful ambience being much appreciated. The following day, we were able to distribute flowers from the big arrangements to several people in the village and a smaller arrangement was taken to Hazelford Residential Home.

Folk Festival Benefice Service On the same day as Open Gardens, people from the seven churches and visitors to the folk festival In Southwell gathered together for a celebration at Rolleston Church. There we engaged in various activities in a more informal setting and enjoyed folk style "hymn" singing led by one of the folk festival performers.

Open Door The last session of Open Door was held at school on July 8th, when children heard the story of the Good Samaritan and engaged in various follow-up activities including music, art and craft and drama. We look forward to welcoming the children, their younger siblings and carers again in September and throughout the new school year.

School Visit Children from Cherry Class visited the church with their teacher, Mrs Spencer, on June 21st to learn about the building, something of its history and to take part in a “treasure” hunt matching photographs of parts of the church and its furnishings with labels and descriptions. They were intrigued to hear about the Bleasby Plague, to discover some of their own names in the register of baptisms and to think about the part the church has played over centuries in the lives of the people of the village. Grave stones and their inscriptions were, as usual, of particular fascination.

Benefice Day More than 40 people attended the Benefice Day which was held at Jubilee House on 30th June, beginning with Holy Communion at 11am. We were pleased to welcome Revd Tors Ramsey, who lives in Goverton and was recently appointed to the diocese to encourage church growth. After lunch we worked in parish groups to consider the health of our own churches and to identify what was holding us back. We shared our findings in a final session. Subsequently we have met to consider an action plan which we will recommend to the Parochial Church Council. As a first step we intend to press ahead with our decision to open the church on a daily basis so that it is available to anyone in the community and to visitors from beyond, of which there are many, visiting the aircrews memorial and the graveyard.

Open Church Following on from the above paragraph, we have drawn up a list of volunteers who are prepared to open the church each day and lock up in the evening. We hope that you will be encouraged to drop in regularly as you pass, bring your visitors and enjoy the peace and tranquillity that the church offers for thought and reflection. We hope in so doing that you will, over time, learn more about who we are as a church, our involvement in the wider community and what we try to do. **This is your church please use it.** If you feel able to join the team of key holders, please be in touch.

Quinquennial Review some members of the PCC met in church on June 18th to discuss the findings of the five yearly architect's report. A decision was made to recommend to the PCC that all those items identified as urgent be carried out as soon as possible and, in addition, every other recommendation which referred to the roof and rainwater goods to be carried out at the same time. This will put a considerable strain on church finances but we are committed to maintaining the good condition of the building.

School End of Term Service The end of term and end of year service was held in church on 19th July. The children looked back on their achievements, experiences and friendships and looked forward to the holidays. For those who were leaving, there were mixed emotions among parents and children alike. It was evident however that the children had enjoyed their time at Bleasby School, looked back with affection and forward with confidence, being well-prepared for their next steps. Goodbyes were said to several children moving from the area and to Mrs Angela Dunning for all she had done for the school and the choir.

Ride and Stride and Work Party On Saturday September 14th the annual Nottinghamshire Historic Churches Trust holds Ride and Stride Day when cyclists and walkers are encouraged to get sponsors to support their efforts in visiting as many churches as they can. If you are a keen cyclist or walker please be in touch for forms and further information. Stewards will be on duty all day to welcome participants. If you don't join the event itself, please think about joining us on that day if you are

interested in carrying out some routine maintenance tasks, such as removing ivy from graves, cleaning windows, treating doors, clearing gullies etc. As the church interior is kept in immaculate condition by Rod Corbett, no internal cleaning work is needed, although if the weather is wet a bit of brass cleaning wouldn't go amiss. If you are prepared to give an hour or so, between 10am and 6pm, please contact Ali Sutherland on 831026 or just turn up, suitably clad.

Bungoma Calling Quiz Two local teams - the Bleasby Team and the Benefice Team - joined a Quiz Night and supper put on by Sarah Beresford of Halloughton Church at South Muskham Village Hall in aid of Bungoma Calling. We didn't cover ourselves in glory but we had a good time and raised in excess of £700 for the education and well-being of children of St. Dorcas Orphanage. And we now all know that the only British Prime Minister to be assassinated was Spencer Percival. This vital piece of general knowledge might come in useful one day.

Bungoma Calling Walk An eight o'clock start seemed a touch daunting for those of us who are not morning persons. Nevertheless, a group of 12 set off from Upton Church on the first leg of the walk, (several other friends joining us at various stages of the route.) After passing through Rolleston we had a brief stop at Morton Village Hall where Anila and Sean Boney provided us with a welcome cup of coffee. The leg between Morton and Halloughton is the longest and involves a steady climb which caused a bit of puffing and slacking of pace (think Tour de France Mountain Stage but without the bikes or cheering fans!!) but we knew that there would be a chance to sit down on arrival. It would be satisfying to be able to report that nobody got lost on this leg but let us just say that we all eventually arrived at Halloughton but not everyone in time for Benefice Holy Communion, having taken an unorthodox route. Amanda and her team put on a delicious lunch afterwards, undaunted by the fact that there is no water laid into Halloughton Church. We continued to Thurgarton and then to Hoveringham where Anila appeared again with hot and cold drinks and cake! Just the encouragement we needed for the final stage along the river to Bleasby where a well-deserved celebratory drink in the Waggon was enjoyed while we acknowledged our aches and pains and various stages of exhaustion. Thank you everyone for the effort, support and companionship along the route and to all those who sponsored us in aid of St Dorcas Orphanage. See you all next year - perhaps!

Diana Temperley and Rachael Andrew, Churchwardens

BLEASBY COMMUNITY WEBSITE UPDATE

Great progress has been made with updating the Bleasby Community Website and thanks goes out to all of those who have contributed to their particular area of community interest. The updates include new sections about what Bleasby has to offer visitors, Bleasby Parish Council (integration of the old website) and information about how to get involved with volunteering and helping to implement the Bleasby Parish Plan. Existing sections of the site covering local community interest groups, village amenities and useful information have been updated and refreshed and there will soon be a new addition where local businesses have the opportunity to advertise their services.

The site publishes regular news items and information about future events planned for the community. These are also emailed to website subscribers to keep them fully informed about what's going on. If you have not already subscribed, please take two minutes to visit the website and sign up – you can do this from any page by clicking in the “sign up for our Email alerts” blue box on the right-hand side.

Bleasby community website is owned and monitored by Bleasby Parish Council but managed by village volunteers. It is intended to complement Bleasby News, Bleasby Village Facebook, local notice boards and word of mouth so, no matter what your preferred means of finding out what's going on, you should get to hear about it.

Keeping the site fresh and up to date depends on contributions from the local community. If you have any ideas for improvements, would like to add a community news item, promote an event for your local community group or advertise your business, please initially get in touch by email bleasbycommunity@outlook.com To visit Bleasby community website and sign-up for email alerts about events and community news, go to: www.bleasbycommunity.uk

Mike Fryer

GARDENS REMEMBERED AND ON SHOW!

I've had the joy of maintaining and developing five gardens so far. The first, at my parents' house, a large plot that was once an example of “The Good Life” before the vegetables were replaced with large borders that quickly became unmanageable. Luckily, I was more than happy to take control of it, before we moved (sadly). The next garden was more of a woodland glade, overgrown with buttercups. Two of us fighting nature couldn't restrain it - we learnt to go with it. It was natural and beautiful. The third was small shared garden in a flat in London. It had a long communal bit at the back that ran alongside the railway line. It was a fantastic communal space where people chatted, grew vegetables and drank wine. The fourth was my first, very own garden, again in London. The challenge was to screen out the houses at the back. It was magical because the gardens merged into an island of wildlife, although there were a lot of cats! Because it was small, about 60 by 20 ft, I created a rather immaculate space, preened to perfection, and it was my pride and joy. Today, I'm sitting gazing over a field in Bleasby. The rather large garden wraps round the house and is significantly overwhelming. I have been working on the garden since a year ago in January. The main attraction is the view. I have slowly opened it all up and I'm in the process of making the many borders manageable and reducing the workload, whilst trying to work out what else to do with it.

I have loved gardening since I was little. Growing plants to me was always enchanting and the anticipation and joy when it all comes together is unbeatable. I once had the pleasure of meeting Alan Titchmarsh - the person who inspired me the most on Gardeners World. I told him how much he'd upset me when he left the programme, signing off for the last time with his “Whatever the weather, enjoy your garden” slogan before disappearing off into the field. He explained that it was also very sad for him as he actually left his house as well as the programme. I didn't realise this. “Did you

take your tree ferns with you?" I asked? "No" he replied. "I couldn't take anything, to have done that would have spoiled the picture I had created". I loved him even more after that. It was this comment that made me think of gardening more as painting with plants. His garden, and that of Monty Don - also absolutely beautiful - are brought to us in all their glory and we get to feast our eyes over them every week.

Most gardens lie behind closed doors - private and inaccessible. Little territories of Utopia. How fabulous to have the opportunity to view some of them during the Bleasby Open Gardens day. Eleven spaces, all existing quietly off grid. Personal spaces, adorned and carefully nurtured by the residents and bravely revealed for us all to have a good nosey around. From the simplicity of the stunning hay meadow that I admire every time I head off down Gypsy Lane on my walk, to the utterly brilliant garden of secret rooms at Tresco - No1 (my favourite by the way!).

Gardening is much more complex than visual art, it's about feeling and atmosphere. Each individual space is unique and has something different to offer. The topiary at "Laburnum" made us all smile, and my son fell in love with the pristine lawn; the talk of the village! I am in total admiration of gardeners who create immaculate spaces, teeming with pristine flowers and perfectly groomed borders - my Gran used to garden like this. I know what hard work goes in to achieving it. But I also appreciate the more natural garden where nature is on the brink of claiming back parts of the space; where wild flowers are coerced into soft patterns, and nettles are allowed to grow freely around the compost heap.

Gardens develop and shift over time - they are never a finished project. I was really touched by the garden at Cherry Cottage - an area with many uses over its time - from a cricket pitch and playground for the growing family, to a peaceful venue for contemplation. A section of the old cricket area is now left as meadow with a path mown through it. Beautiful.

Thank you and well done to all of you who opened up; it was such a special day for us to gather and discover the parts of the village that exist behind the hedges. I also hope everyone made it down the drive to the school where the 'garden and grow' project is inspiring the next generation of gardeners in the village and beyond.

One day is, of course, a mere snapshot in time. By June, the tulips that were glorious in April are now melting away somewhere underneath the hostas, and the lilac, which was stunning a few weeks ago, has now turned brown. In June the hollyhocks have yet to show off at the back of the borders and plump tomatoes ripening on the vine belong to July and August. Gardens are projects all the year round and those of us tending them are never really satisfied and we're always seeking to improve.

In two years, I'm going to bravely join you for the next Bleasby Open Gardens day, so that for one afternoon at least, others can enjoy my patch of land. I will keep my fingers crossed that a posse of moles doesn't come in from the field and have a party in my lawn the night before. But if they do, I hope you will join me in trampling it back

down, and accompany me in a toast to all amateur gardeners out there - especially the ones in our lovely village of Bleasby.

Emma Petrie

'TWIXT AND BETWEEN

The accumulating heat and long school holidays of late July and early August may seem to suggest that we are in the height of summer but, in fact, by the beginning of August we are already six weeks on from midsummer's day and the majority of our wildlife has completed its yearly cycle with young birds grown and flown and most native plants flowered and seeded – as have the wild grasses from which our cultivated grains are derived. This 'twixt season period actually marks the cereal harvest time of former years when whole communities, including Victorian schoolchildren, were needed to reap, dry, stack and store the oats, wheat and barley at the end of the growing season.

This period may be warmer, but the days are shortening – in fact we are already moving into preparations for the autumn season of “mellow fruitfulness”: blackberries around the Ponds are well in flower and the first fruits are forming; rowan trees are already carrying faintly blushed berries; hawthorn, blackthorn, elder and hazel are now well fruited and nudded, albeit still green; hogweed and cow parsley are currently shedding their seeds and the oaks are producing a final flourish of orange 'Lammas' leaf growth before the autumn leaf fall.

There has been a complete change of flora on the JP meadow with thistle, knapweed and greater burnet now taking centre stage and a lower sideshow of selfheal and ladies bedstraw backing a welcome new star-turn of showy meadowsweet – but all this is the last fanfare of summer and the meadow must now be cut if its flower show is to be repeated next year. Elsewhere the shorter mown grass has allowed birdsfoot trefoil to proliferate and another new addition to our flora, toadflax, to take a foothold whilst the recent showers and cloudbursts have encouraged a burgeoning of fungi (such as the many confusing species of wild mushrooms) to make a prominent unseasonal appearance.

Cuckoos have already left our shores and swifts are about to leave too, whilst our remaining duck species are currently a shadow of their former selves, having gone into eclipse and renewing all their plumage, discreetly hiding within bankside vegetation. Our mallards and tufted ducks are distinctly less than dapper!

Meanwhile there have been some pleasing new additions to our late breeding successes this year and it was with great joy and excitement that residents reported at least six very recently hatched cygnets on the Ponds towards the end of July – following the four which were successfully reared to maturity last year after a succession of previous failures and a change in the swan partnership.

Hopefully villagers will also have noticed the humbug-striped heads of the great crested grebe young that have been riding piggy-back on their respective parents'

backs on both of the main lakes. Both grebes and swans will carry their young in this way, keeping them warm, dry and safer from predators such as mink and pike which, in the past, we have observed picking off, one by one, a whole clutch of recently hatched pochard ducklings.

It has been with some incredulity that a number of you have reported hearing the characteristic piping “kleep kleep” call of oystercatchers, as far away here from the coast as it might be possible to be. Your call identification has been spot on and we are delighted to confirm that at least one pair has nested successfully nearby, rearing to maturity two young – which is no mean feat considering that there are no “cockles or mussels alive, alive oh” here – being one of the very few wading birds that are obliged to feed the young themselves. These birds have been nesting in the area, to our knowledge, since the gravel workings became extensive and remained unrestored and, as they have been known to live for up to 36 years, they might even be the original birds or, at least, the direct descendants of the first colonists.

Many folk have been having grand views of barn owls around our meadows, verges and other grassy areas and we can confirm that a locally nesting pair have reared at least two young thanks to a plentiful supply of voles and mice to be found in the grassland areas.

Now is the time to review how the management of the Ponds has continued to provide the necessary range of habitats to sustain our wide range of local flora and fauna, and to look more widely around the parish to identify, enhance and secure those critical habitats within our homes, gardens and local countryside so that together we will be able to maintain such a rich and rewarding experience for our children, grandchildren and future generations in this parish. If, through the Parish Plan, you indicated your interest in supporting working group activity on the Ponds in some way, then we will be contacting you after the holiday period to seek your help in achieving these objectives. And, for any who did not have the opportunity to offer your help, please check the community website www.bleasbycommunity.uk for more information and to join the Village Volunteers.

Peter Cast

BLEASBY C of E PRIMARY SCHOOL NEWS

The Year Six results at Bleasby School have been exceptionally good this year and I am very proud of each and every child in Cedar Class. These results are testament to the hard work and effort of each and every child, supported by nurturing and loving families. They are also the result of very high quality teaching. The children have received fabulous provision from Mrs Carpenter and Mrs Cook in Year Six and also from the fabulous teaching in each and every class on their journey from Apple Class to the end of Year Six. Mrs Carpenter adds “I cannot tell you how very proud I am of each and every one of the Year Six children. They have worked with determination and perseverance to continually challenge themselves to be the very best they can be. The results are remarkable and very well deserved. The children are a credit to school and I am honoured to have had the opportunity to teach Cedar Class.”

Paws and Claws - this was an absolutely fabulous production. Well done to all the children who took part. Their acting, singing and performances were outstanding. A massive thank you goes to all staff, BSFA and volunteers involved. Particularly we thank Mrs West on her fifth production at Bleasby: every year she gives massive amounts of her time to rehearse with pupils and prepare scripts etc. and she brings out so much creativity and confidence from our children. We also thank Mrs Carpenter - it is her final summer production (before she moves to Farnsfield St Michael's as Headteacher in the New Year).

Another amazing achievement for our schools sporting stars, this time playing Quadkids (4 a side hockey) in the Schools County Finals Games at Nottingham Trent University. In the initial matches the team was a little slow to get off the ground drawing the first match 2-2 but they soon got into the flow and were unbeaten throughout the tournament. Success was within reach going into the final game. True Bleasby fighting spirit was again shown and, after another well fought victory, Bleasby was crowned Nottinghamshire Schools County Champions. Mrs Hobson, their coach, said "I would like to thank all the children for their hard work on the day and for the 100% effort and commitment they have given. You are true legends!"

On 1st July the school officially joined the Mitre Trust Academy. Mr Matthew Parris, Headteacher of the Minster School, visited Bleasby School on 3rd July and presented the school with a special plaque. He also spoke with staff and children during his visit. We are grateful to Revd Phil for attending on the day as a governor and church representative. We are looking forward to working with the Trust and continuing to improve the provision for our children at Bleasby C of E Primary.

Sam Mensah. Headteacher

WELCOME

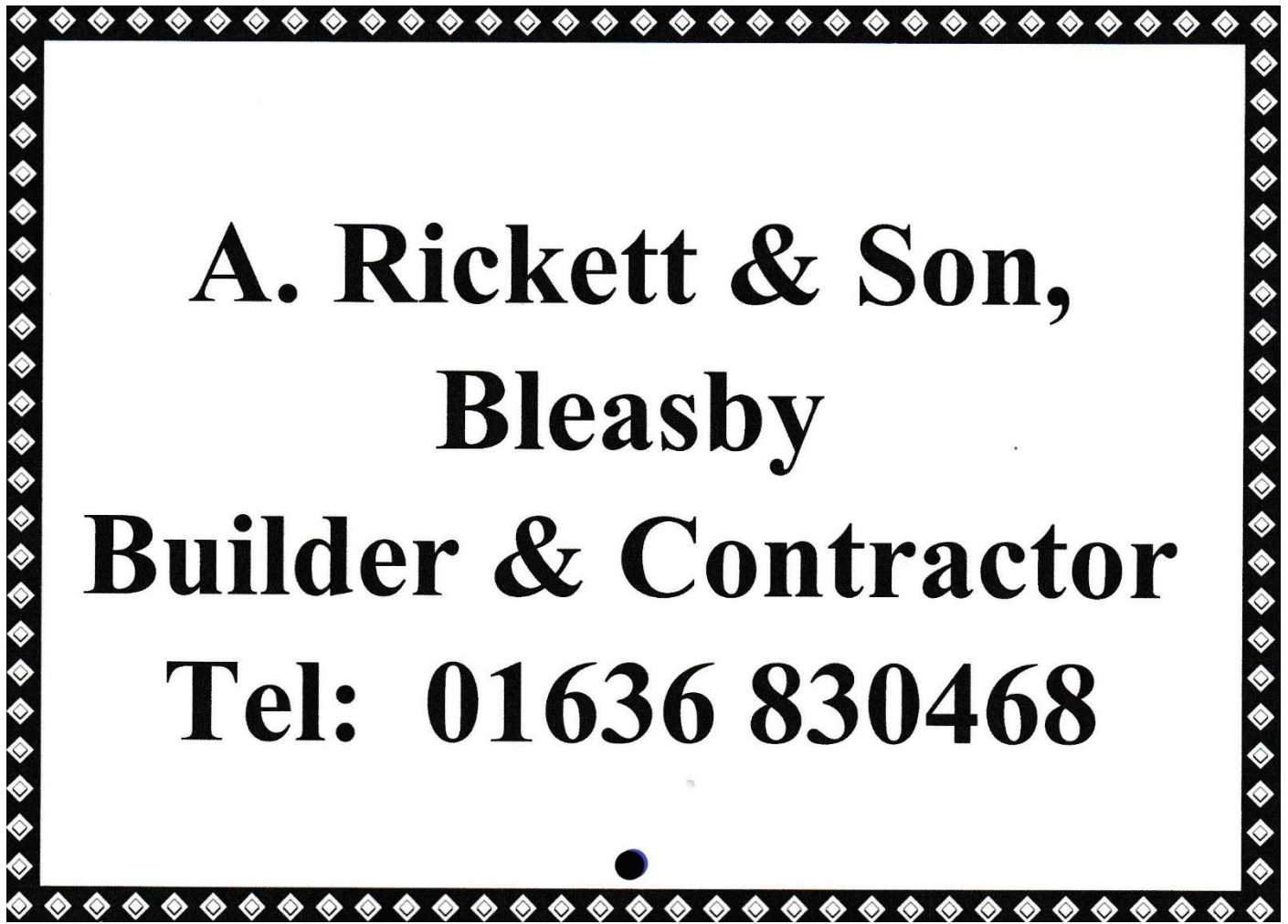
We offer a warm welcome to the following families who have moved into the village. We hope you will enjoy being part of our community.

Guy, Sue and Molly Spreckley, Sycamore Lane
Helen and Philip Healey, Manor Close
Paul, Jayne and Joseph Adams, Meadowbrook
Jo, James, Zac and Josh Allen, Oak Tree Lane
Andrea, Pete, Kieran, Mia and Zara Cobley, Wyngates
Richard, Annika, Emily, Natalie and Nick, Hawthorn Close
Lynette and Scott Winter-Pearce, Orchard Close.

And congratulations to Beth and George James on the birth of Evan.

ATTENTION BIKERS and WALKERS!

If you enjoy a bit of a challenge please consider taking part in the Nottinghamshire Churches Trust event on Saturday September 14th. The aim is to visit as many churches on their list as you can, including our own and other local churches. Favourite rides include the Vale of Belvoir and the pilgrim villages. Winners receive cash prizes for themselves and their local church or a church of their choice, as well as providing much needed funds, through personal or group sponsorship, for restoration work.



**A. Rickett & Son,
Bleasby
Builder & Contractor
Tel: 01636 830468**

BLEASBY PLAYGROUP

Bleasby Playgroup has had a wonderful month enjoying den building, colouring, singing and crafting, along with our usual playing in the dressing-up box, building racing tracks for the cars and looking after the babies. We've been pleased to welcome some new faces too.

For our last session of the year we hosted a party to celebrate all our friends going off to school and the start of the holidays - Good Luck Sophie, Jamie and Violet.

We'd also like to say a huge thank you to Alison Collins, one of the founding members of playgroup, she (and her singing) will be missed by many on a Monday morning - thanks for keeping the playgroup ship afloat Alison, enjoy the rest!

We'll be back at the village on Monday 9th September, 9:15-11:15 am, £2 per family, hot drinks & healthy snacks provided, parents, grandparents, carers all welcome.

Lauren

CONGRATULATIONS TO LOCAL LION CLUB COMPETITION WINNERS

Many congratulations to local children who won awards for their art and written work entered in the Lion Club Competitions. Five local schools entered the competitions so the achievements of our own children were very impressive. Here are the award winners – each of them were judged the best in their school years across all participating schools.

- Rosie Roscoe, Clem Beardmore and Zac Marshall received certificates of merit for their artwork, with Rosie declared the overall winner in year 3 and receiving a prize of £25 and £125 for her school.
- Matthew Strange, Francesca Dix, Sam Garner and Annie Cast-Coombs received certificates of merit for their short stories, with Matthew of year 3 and Annie of year 4 declared the overall winners in their years and receiving prizes of £25 each with £125 for each of their schools.
- Elsie Carpenter, Redmond Petrie, Charlie Ball and Annie Cast-Coombs received certificates of merit for their poems, with Annie declared the overall winner in year 4 and receiving a prize of £25 with £125 for her school.

Well done all of you!



A photo of the overall prize winners in each category from Bleasby, Averham, Farnsfield, Kirklington and Halam schools, and the Chair of Southwell Lions Club at the presentation in the Minster School

BLEASBY BIKE FEST

The Bleasby Bike Fest is returning for a second year on Sunday 1st September. We need lots of people to help for this event to be a success. If anyone would be willing to give up an hour or so on the day, please let Bobbie know on 07943 372268 or [email bleasbycommunity@outlook.com](mailto:bleasbycommunity@outlook.com)

There are lots of things to help with, including:

- Sitting at a table taking registrations
- Serving refreshments to children
- Sitting on Gypsy Lane keeping an eye on children as they cycle along and helping if needed
- Helping children over ramps etc on Glebe Field
- Helping young children learn to ride for the first time (with a British cycling expert)
- Cycling up and down Gypsy Lane stewarding the proceedings

As you can see not all jobs are active and physically demanding so please come along and help and join in the fun. Thank you in advance!

We thank the team at Southwell Handicentre for their support.

The Bike Fest Team

LAKE DISTRICT HOLIDAY COTTAGE

Borrowdale Road, Keswick

3 Bedrooms | Sleeps 6

TO LET

**Fully refurbished holiday cottage with gas central heating,
open fire place and private parking**

**Views overlooking the fells, front and rear gardens,
superb location**

**For further details please ring
01636 830209 | 07812 101303**

Bleasby Diary of Events

Date	Time	Event	Location
Sunday 4 th August	10.30am	Holy Communion	St Mary's
Sunday 11 th August	10.30am	Holy Communion	St Mary's
Sunday 18 th August	10.30am	Benefice service of Holy Communion	St Michael's Hoveringham
Sunday 18 th August	2pm	Countryside and Footpaths Walk	Look out for notices & emails
Tuesday 20 th August		Southwell Music Festival commences	Southwell venues
Tuesday 20 th August	7.30pm	Meeting of Bleasby WI with John Hope of Museum of Timekeeping	Village Hall
Sunday 25 th August	10.30am	Morning Praise for everyone	St Mary's
Monday 26 th August		Last day of Southwell Music Festival	Southwell Minster
Friday 30 th August	10.30am-12noon	Friendship Coffee Morning	Village Hall
Sunday 1 st September	10.30am	Holy Communion	St Mary's
Sunday 1 st September	2pm-5pm	Bike Fest	Glebe Field
Sunday 8 th September	10.30am	Morning Prayer for everyone	St Mary's
Sunday 8 th September		Bleasby Local History Society to Woolsthorpe Manor	
Monday 9 th September	7.30pm	Meeting of Bleasby Parish Council	Village Hall
Saturday 14 th September		Bleasby WI tabletop sale	Glebe Field
Saturday 14 th September	All day	Ride and Stride (walk or bike tour around local churches)	St Mary's & other Notts churches
Sunday 15 th September	10.30am	Special benefice service of Holy Communion with Choir	St Peter and St Paul Upton
Sunday 15 th September	2pm	Countryside and Footpaths Walk	Look out for notices & emails
Monday 16 th September		Deadline for October's Bleasby News	
Tuesday 17 th September	7.30pm	Meeting of Bleasby WI with Lesley Taylor on Veolia	Village Hall

Sunday 22 nd September	10.30am	Morning Praise for everyone	St Mary's
Tuesday 24 th September	7.30pm	Meeting of Bleasby Local History Society with Jms Wright on Lord Cromwell & Tattershall Castle	Village Hall
Friday 27 th September	10.30am-12noon	Friendship Coffee Morning	Village Hall
Sunday 29 th September	10.30am	Benefice service of Holy Communion	St Michael's Hoveringham
Saturday 12 th October	12noon - 4pm	Bleasby Apple Festival	Glebe Field

August Church Services in the West Trent Benefice (HC = Holy Communion, MPE = Morning Praise for Everyone, EP = Evening Prayer)

August	Bleasby	Halloughton	Hoveringham	Morton	Rolleston	Thurgarton	Upton
Sunday 4 th	10.30am HC		6pm EP	9am HC	10.30am MPE	10.30am MPE	12.30pm Baptism
Sunday 11 th	10.30am HC	10.30am MPE		10.30am MPE	10.30am MPE	10.30am HC	10.30am HC
Tuesday 13 th							10am HC
Sunday 18 th			10.30am Benefice HC				
Sunday 25 th	10.30am MPE		10.30am MPE		10.30am HC	10.30am with Methodists	

September Church Services in the West Trent Benefice (HC = Holy Communion, MPE = Morning Praise for Everyone, EP = Evening Prayer)

September	Bleasby	Halloughton	Hoveringham	Morton	Rolleston	Thurgarton	Upton
Sunday 1 st	10.30am HC		6pm EP	9am HC	10.30am MPE	10.30am MPE	10.30am HC
Sunday 8 th	10.30am MPE	10.30am HC		10.30am MPE	10.30am MPE		10.30am MPE
Tuesday 10 th							10am HC
Sunday 15 th							10.30am Benefice HC with choir
Sunday 22 nd	10.30am MPE		10.30am MPE	10.30am HC	10.30am Harvest	10.30am with Methodists	9am MPE or HC
Sunday 29 th			10.30am Benefice HC				

ANDREW MCLEISH – FROM BLEASBY SCHOOLBOY TO TOP CHEF

Andrew spent all his childhood in Manor Close and went to Bleasby and Minster Schools. He showed his potential skill in the kitchen at a very young age, often being keen to prepare meals for his family - at the age of just seven he prepared and cooked Christmas dinner, only needing help in putting the turkey into the oven and getting it out!

Having trained and entered the restaurant profession, Andrew soon progressed. One high point early in his career was being the youngest sous chef to have worked at the Ritz London. Following extensive and varied undertakings as a chef, he is now the Executive Chef & Managing Partner at Chapter One Restaurant, Locksbottom, Kent.

The following is an edited extract from a recent Restaurant Industry News interview with Andrew.

“What made you aspire to be a chef? – This is a little bit of a cliché to say but I always wanted to be a chef. I love the different cultures that food encompasses and I love the buzz of the kitchen.

Talk us through some of the items currently on your menu? - The roe buck season has just started so we will be using some beautiful tender roe deer - this is a great summer venison. We have some amazing local turbot, and wild sea bass is in abundance at the moment.

What other locally sourced produce is used in the dishes? I use local as much as possible for example, the venison is locally shot, and of course there is asparagus in season. Our strawberries and other berries are from Kent's local farms.

Do you think it works well changing the menu regularly? Our customers love to see menu changes but, for us, it's a balance between the changing of the seasons and consistency of the dishes. We do have a lunch menu that changes weekly and we change 3 to 4 dishes a week on the a la carte menu.

Do you have a specific style of cooking you enjoy most? - Just proper old school cooking is my style - roasting in a pan in butter, poaching, braising etc.. I love to cook game, especially grouse. The traceability and the field to fork ethic is very important to me.

What are the aims for the restaurant environment? - Our aim at Chapter One is to create an amazing dining experience that's fun but polished and attentive to our guests in a discreet way. I want you to leave wanting to come back. This doesn't mean just good food – it needs to encompass great service, great cocktails and wine, a fantastic bar and a price point that is fair. We have a great team here and, with them, I believe Chapter One is now the best it has ever been.

What culinary experiences are available? - We offer a brasserie menu, lunch menu du jour, a la carte, 7-course tasting menu and Sunday lunch. We regularly host special events including Champagne, Wine, Whisky and Cognac Tastings with canapes, Cocktail Classes and Cookery Masterclasses in the Private Dining Room (including one on how to prepare a Christmas turkey). Chapter One has become a hub for foodie experiences in the area as well as a great restaurant for informal and formal dining.

Will you continually experiment with new flavours? - Our learning and progression should never stop.

What advice would you give to anyone looking to become a chef and what are some of the most important things you have learnt? - Be prepared to work hard, very hard. Never give up; it will be hard but very rewarding. There will be many ups and downs. Put your head down, observe and most importantly, listen. There will be a time when you are put to the test and that is your time to show the chef that you have listened and learned.”

GARDEN TREES

Our daughter is moving to Northumberland – to a house on a moor, with no other habitation within 1½ miles. When I looked at the photographs, I saw that the stone building was surrounded by a low stone wall, the moorland stretched for miles, and there wasn't a tree in sight. I thought about this, and realised how much our garden trees mean to me. Each one has memories covering up to half a century, and are a constantly changing backdrop for the flowers and shrubs in the borders. When we moved here, there were two trees – a cherry plum and a willow. The former is now looking wrinkled and rather tired (dare I say like its owners?!) but the amount of fruit produced over the years has been proof of its value and worth. Jam, chutney and stewed fruit for every meal has frequently been the routine during good summers. I



have also seen bullfinches having a happy time among the early blossom. The willow tree was just the right height for the children to climb on when they were young – since then, it has grown to allow our grandchildren to have a swing hanging from the branch their mother used as a stepping-stone to greater heights! With the cherry plum, it has provided an anchor for the washing line, and the wooden seat beneath its canopy has offered restful and cool shelter on hot days. However, it has not always been an unmitigated asset – our fishpond was underneath it, and not only was it always clogged up with leaves, the fish all died because of the poison (basically aspirin) in the leaves. So the fish pond went. The willow has been pollarded at least twice and, after such severe haircuts, it has provided much amusement, as in winter it looked like two weird animals dancing together. The

resemblance to Arthur Rackham's illustrations is uncanny. (see left) (*or Stickman Ed*)

We have planted many other trees – an oak was planted 21 years ago with our six year old grandson ‘helping’. It is now a very substantial tree. A purple acer has given much pleasure with its yellow flowers followed by the wonderful coloured leaves – but there are so many to be swept up in autumn! Our large collection of compost bins is essential and they provide us with garden gold, which is what my parents’ gardener called compost. A real triumph has been the silvery green fir tree that was given to us for our 25th wedding anniversary. For many years it was under the shadow of the willow and remained small and insignificant until we moved it into the extra piece of land we bought, and treated the red spider mites with nematodes: now it is about 12 feet tall, and very beautiful! We have also planted various fruit trees, but with minimal success, and we inherited a walnut, a Spanish chestnut, and a cherry tree with the extra land. We have a hornbeam, a whitebeam, a weeping birch and a rowan. We used to have a larch tree, but it grew too big for the garden. I miss it so much – particularly the pink flowers in spring. Other trees have also had to go – one problem with planting trees is that it is not always easy to visualise how much they will grow, and a plan that starts off with the best intentions can become a problem when it becomes reality! I fear we may have been overenthusiastic in our garden, and our tree management plan should have been better.

Trees are wonderful – aesthetically, and also as an integral part of our increasingly fragile ecosystem. The food and shelter they give birds and insects is invaluable, even though we have to remember that trees planted in the wrong place can cause problems, for example, drains. For me, a garden without trees would seem naked, but a moorland landscape will have many compensations!

Diana Temperley

THE SPACE RACE

To some extent the Space Race dominated the lives of those of us who grew up in the 1960s. You could hardly switch on the television without some sort of news about Russia or the US and their attempts to reach the Moon. The coverage was all in black and white, of course, which was strangely appropriate. Apart from major incursions into the coverage, like the assassination of presidents, it really was the main theme. The mantra was “10, 9, 8, 7, 6, 5, 4, 3, 2, 1 Blast off!” It really was very exciting. The main point of departure was Cape Canaveral, which seemed like a fairy tale name for such an event. Our hearts were in our mouths for a safe departure and return for those astronauts.

Whilst attempting to de-clutter recently, I found a holiday diary which I had kept for July 1969. Much to my chagrin, we were on holiday, minus a television, for the Moon Landing. I missed it! However, it seems we went to see the film, ‘2001, a Space Odyssey’, which I found ‘puzzling’. I was reading ‘The Day of the Triffids’ by John Wyndham. There is an entry in my diary on about July 25th in capital letters - “ASTRONAUTS LANDED (SPLASHED DOWN) BUT DID NOT HEAR MUCH ABOUT IT.” Too busy exploring this planet, I suppose.

A friend, who lived on the Isle of Wight, recalled how, in 1957, her father, who expected her to be impressed, pointed out a Sputnik, passing overhead, with Laika in it. She promptly burst into tears at the thought of a little dog orbiting the earth. Quite!

Jennifer Sterland



CONGRATULATIONS FREYA

Freya Andersen won the Pony Club Area 6 One Day Event held at Burghley Park on 13th July. A great result for her and for her pony, Braddocks Pandora.

*A photo of Freya on
Dora at the event*

BLEASBY WI JUNE AND JULY

The last two months have seen WI members active both in and out of the village. Early June saw two of our members attending the National WI meeting in Bournemouth, one representing the County and one the local group of WIs. At this meeting, among other things, the resolutions which had been discussed at our May meeting were discussed at a national level and passed ready for action to be taken at a national level. Later in June three of our members attended the County weekend held at Denman, the national training college for WI members. They spent the weekend learning about Oxford on a walking tour, creating some art work and learning the art of cheese making. Early July saw 7 of our members taking a direct train to Skegness where they had the obligatory fish and chips supper, ice creams - and some brave people even went for a paddle.

In between these events other members were involved in the Open Gardens and Church day held in glorious weather. Before the day, they were involved in a litter pick to ensure that the village looked at it best for the visitors. Some members opened their gardens, whilst others baked cakes which were then served at the

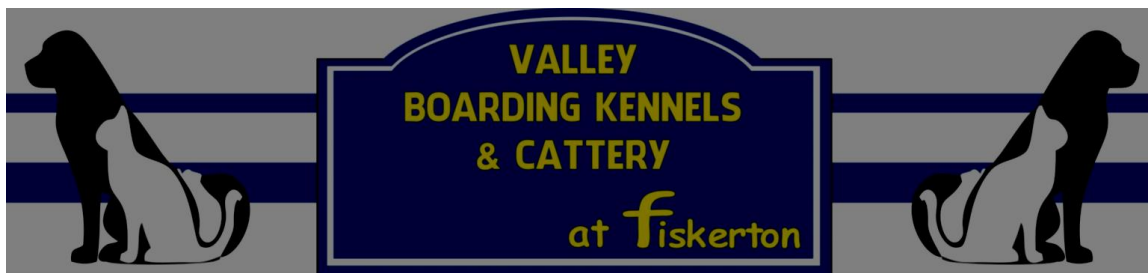
Village Hall. These refreshments received many very positive comments from the visitors, providing a welcome break in between garden visits.

All this as well as the usual lunch outings to The Lambley and The Chequers at Woolsthorpe, Book Group meetings and theatre trips to the Robin Hood at Averham.

Our monthly meeting in June was a talk and active demonstration on Armchair Pilates by Cheryl Roebuck, who told us the history of Pilates as an exercise routine and showed us simple ways to improve our core muscles while undertaking daily tasks. The July meeting was a social event, an evening picnic held by the lake at Gibsmere, by courtesy of Bob and Monica Richardson. This took place on a beautiful balmy evening and a few members followed it by a walk around the lake. Our thanks go to Bob and Monica for allowing us the use of this beautiful location. The next meeting on August 20th will be a talk about The Museum of Timekeeping at Upton Hall.

We meet in the Village Hall at 7.30pm – visitors and new members are always welcome.

Sheila Lewis



Going Away?

Leave your pets with your local friendly
Boarding Kennels & Cattery.

Competitive rates, for more details please contact us on

01636 830268

or check out our new website
www.valleyboardingkennels.com



The intrepid walkers – still on their feet after walking all seven churches from Upton to Bleasby via Rolleston, Morton, Halloughton, Thurgarton and Hoveringham

So far nearly £700 raised for Bungoma Calling – your donations still welcome!



Mo's Maids

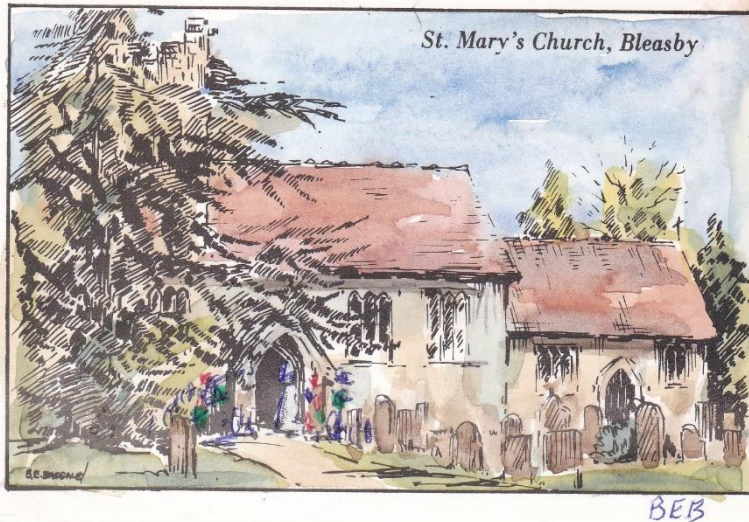
**We offer a Quality Cleaning
& Domestic Service**

One off visits/Spring Cleans
Weekly/Fortnightly/Monthly
Ironing Service

**All equipment & materials provided
All staff are fully vetted & insured**

Call Mo - on 07837 372522 or 0115 8405128

A DAY LONG OPEN CHURCH – STARTING IN AUGUST!



Thanks to all those who have offered to be on the opening and closing church rota – we are nearly there. As said in the last edition, we would very much like St Mary's to be always open in the daytime to allow visits, and we will need volunteers to unlock and lock at dusk – please let Rachael 830296 or Diana 830314 know if you are considering taking a turn on the locking rota.

NEIGHBOURHOOD WATCH WARNING **COURIER FRAUD, BOGUS POLICE AND BANK OFFICIALS ALERT**

What you need to know Individuals have been receiving phone calls from people claiming to be a police officer or banking official. The suspect will say either that -

- There has been fraudulent activity at the victim's bank and the staff at the bank are involved, the victim is then asked to withdraw money to either keep it safe or assist the police with their investigation
- A business such as a jewellers or currency exchange is fraudulent and they require the victims' assistance to help secure evidence by purchasing jewellery or exchange a large amount of currency to hand over to the police
- The victim's card has been compromised and used to purchase goods by a suspect, the victim is requested to withdraw their money to keep it safe or hand over their bank card to the police
- Occasionally the victim will be told to dial a non-emergency extension of '161' to receive confirmation of the individual's bogus identity, the bogus official will advise the victim to lie about the reason for the withdrawal or purchase if challenged by staff, as the staff member is involved in the fraud.
- A courier attends the victim's home address to collect the goods the same day. Often the victim is given a code word for the courier as a way of authentication

Your bank or the police will never:

Phone and ask you for your PIN or full banking password

Ask you to withdraw money to hand over to them for safe-keeping

Ask you to transfer money out of your account

Send someone to your home to collect cash, PINs, cards or cheque books

What you should do: End the conversation immediately by hanging up. Wait for 10 - 15 minutes to allow the caller to drop the line (or preferably use a different phone) and report the incident to Action Fraud on 0300 1232040 or, of course, 101.

SAVE THE DATE: 12 Oct 2019

The Bleasby Events Team are organising a community Apple Festival on Saturday 12 October 2019, between 12 & 5pm.



It will be held on Glebe Field where you can bring along unwanted apples and have a go at scratting & pressing to produce fresh juice to take away or drink straight there and then.

There will be live music, a Waggon & Horses BBQ or hog roast, children's games and other apple themed activities to make you smile!

The event is going to be the very first Apple Festival in Bleasby and hopefully you will agree it's a great way of bringing our community together for a fun day.

In the meantime, if anyone is interested in lending a hand on the day or if you have any questions, please email:

bleasbycommunity@outlook.com and someone from the Events Team will get back to you.

Sign up to email alerts on www.bleasbycommunity.uk

Thinking about your hearing?

If you've noticed that you sometimes have difficulty hearing as well as you used to then you could have ear wax build up or it could be progressive hearing loss.

At Correct Hearing we can solve both problems and help you get the very best from your hearing.

Ear Wax Removal

We use micro suction to remove ear blockages, the safest and most effective technique. The procedure takes just a few minutes, is completely painless and can often be performed without weeks of using ear drops.

Huge Range of Hearing Aids Available

Including 'invisible' ITC devices. All hearing aids are uniquely configured to correct your individual hearing loss.

FREE HEARING TESTS

We also offer free hearing tests without any obligation. Same day appointments are available.



*Sarah Volkes Director
of Correct Hearing*

FREE CONSUMER GUIDE TO BETTER HEARING



We are giving away **FREE** copies of the 36 page full colour Consumer Guide to Better Hearing Brochure which is full of helpful and clear information to help you understand more about how your hearing works and why you may be experiencing difficulties. **GET IN TOUCH FOR YOUR FREE COPY**



Correct Hearing

To find out more, get in touch today. Tel: 0115 961 8351 / 0800 368 4747

Email: info@correcthearing.co.uk • www.correcthearing.co.uk

242 Oakdale Road, Carlton, Nottingham NG4 1AD



Hazelford

The Provider of Quality Care

If you have ever wanted to live or stay in gracious surroundings within extensive beautiful grounds having views over the Nottingham Countryside, there is the opportunity to do so at Hazelford Residential Care Home.

The lovely gardens and charming views make Hazelford a delight for our guests. Hazelford provides a warm and friendly home with a committed, friendly team of staff whose endeavour is to provide for our guests comfort and needs.

Hazelford Residential Home is well known within the local community for its high standards. Both short-stay and permanent residents live in a luxurious, reassuring and comfortable environment.

We strive to understand our guests hopes, aspirations, hobbies, pastimes and interests in order that we can make a difference.

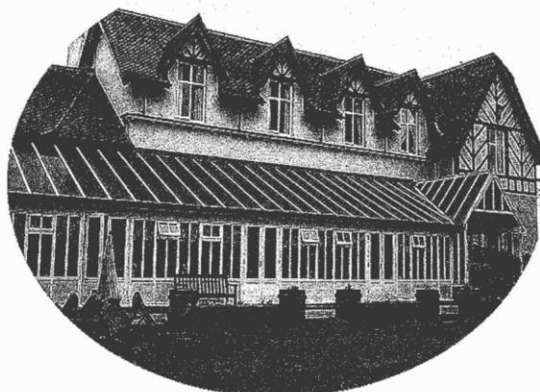
Our aim is to offer stimulating and gentle support where the well being of each of our guests is our main concern. Our highly qualified experienced staff and management team provide you with the best range of facilities to enjoy life to the full.

The Hazelford invites you to visit at any time. A warm welcome awaits you at

HAZELFORD

**Boat Lane
Bleasby
Nottingham
NG14 7FT**

Tel: 01636 830207



BUS SERVICE – 300 MEDI-CONNECT – UPDATED TIMETABLE

The timetable for the bus service, which runs on Mondays, Wednesdays and Fridays from Lowdham to Southwell and then on to Newark, is available to all.

Outgoing stopping point	1st service	2nd service
Lowdham, Epperstone Road	09.30	12.30
Lowdham, Magna Carta	09.33	12.33
Lowdham Station	09.34	12.34
Caythorpe, Main Street	09.37	12.37
Hoveringham, Main Street	09.41	12.41
Thurgarton, Bleasby Road	09.48	12.48
Bleasby, Main Street	09.52	12.52
Fiskerton	09.57	12.57
Morton, Main Street	10.00	13.00
Southwell, Church Street	10.04	13.04
Southwell, Ropewalk	10.07	13.07
Upton Main Street	10.15	13.15
Newark bus station	10.39	13.39
Returning stopping point	1st service	2nd service
Newark bus station	10.43	13.43
Upton Main Street	11.00	14.00
Southwell, Church Street	11.08	14.08
Southwell, Ropewalk	11.11	14.11
Morton, Main Street	11.17	14.17
Fiskerton	11.20	14.20
Bleasby, Main Street	11.25	14.25
Thurgarton, Bleasby Road	11.29	14.29
Hoveringham, Main Street	11.35	14.35
Caythorpe, Main Street	11.39	14.39
Lowdham Station	11.42	14.42
Lowdham, Magna Carta	11.43	14.43
Lowdham, Epperstone Road	11.46	14.46

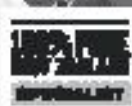
NJN JOINERY

Phone: Nigel Newcombe
on
01636 525506
or
Mobile: 07837 235427

ALL TYPES OF JOINERY
AND
MAINTENANCE WORK
UNDERTAKEN



HYDEBARKER
WORLDWIDE TRAVEL & ADVENTURE



Tel: 01636 816 262

www.hbtravel.co.uk | 1 King Street, Southwell

Summary Train Timetable - May to December 2019

	From Bleasby to Newark Castle **
Monday to Friday	06.16;07.14;08.17;10.11; 12.14;15.14;17.12;18.39;19.41;22.45
Saturday	06.17;07.14;08.19;10.11; 12.15;15.12;17.11;18.09;21.43
Sunday	9.51;11.51;14.57;17.47;22.49
	From Newark Castle to Bleasby
Monday to Friday	06.08;06.42;07.39;09.39;11.39; 14.39;16.39;17.39;17.56;22.55
Saturday	06.10;07.41;08.43;09.38;11.39; 14.39;16.38;17.39;17.54
Sunday	9.29;11.42;14.48;16.46;18.34;22.38

** journey time approx 15 mins

Summary Train Timetable - May to December 2019

	From Bleasby to Nottingham *
Monday to Friday	6.21;6.55;7.52;9.52;11.52; 14.52;16.52;17.52;18.07;23.05.
Saturday	6.22;7.54;8.55;9.51;11.52; 14.52;16.51;17.52;18.06
Sunday	9.41;11.54;15.01;16.58;18.46;22.50
	From Nottingham to Bleasby
Monday to Friday	05.54;06.53;07.56;09.49;11.51 14.50;16.50;18.17;19.19;22.26
Saturday	05.55;06.53;07.58;09.51;11.53; 14.50;16.48;17.48;21.24
Sunday	09.30;11.30;14.35;17.27;22.28

*Journey time approx 25 mins

Whilst every effort is made to ensure accuracy, the editorial team cannot accept responsibility for errors or omissions in articles appearing in Bleasby News. The views expressed in Bleasby News are not necessarily those of the Editors nor of Bleasby Parish Council. Bleasby News is distributed by local volunteers to whom we remain very grateful. Printed by Unwin Print, Farnsfield.



PAWS AND CLAWS - BLEASBY SCHOOL PLAY



BLEASBY PLAYGROUP – LAST DAY BEFORE SEPTEMBER

The
**WAGGON
& HORSES**
Bleasby

**NOW OPEN
ALL DAY
EVERYDAY**

Great ales
Lovely wines
Open fire
Cosy lounge
Beer garden



**Delicious homecooked food
served everyday**

**Woodfired, stonebaked Pizzas
Monday & Friday evenings**

**A proper Sunday Roast
served 12-3pm**

We welcome
walkers with
muddy boots
and dogs with
muddy paws!



GYPSY LANE, BLEASBY NG14 7GG [TEL:01636830283](tel:01636830283)

www.thewaggonbleasby.co.uk